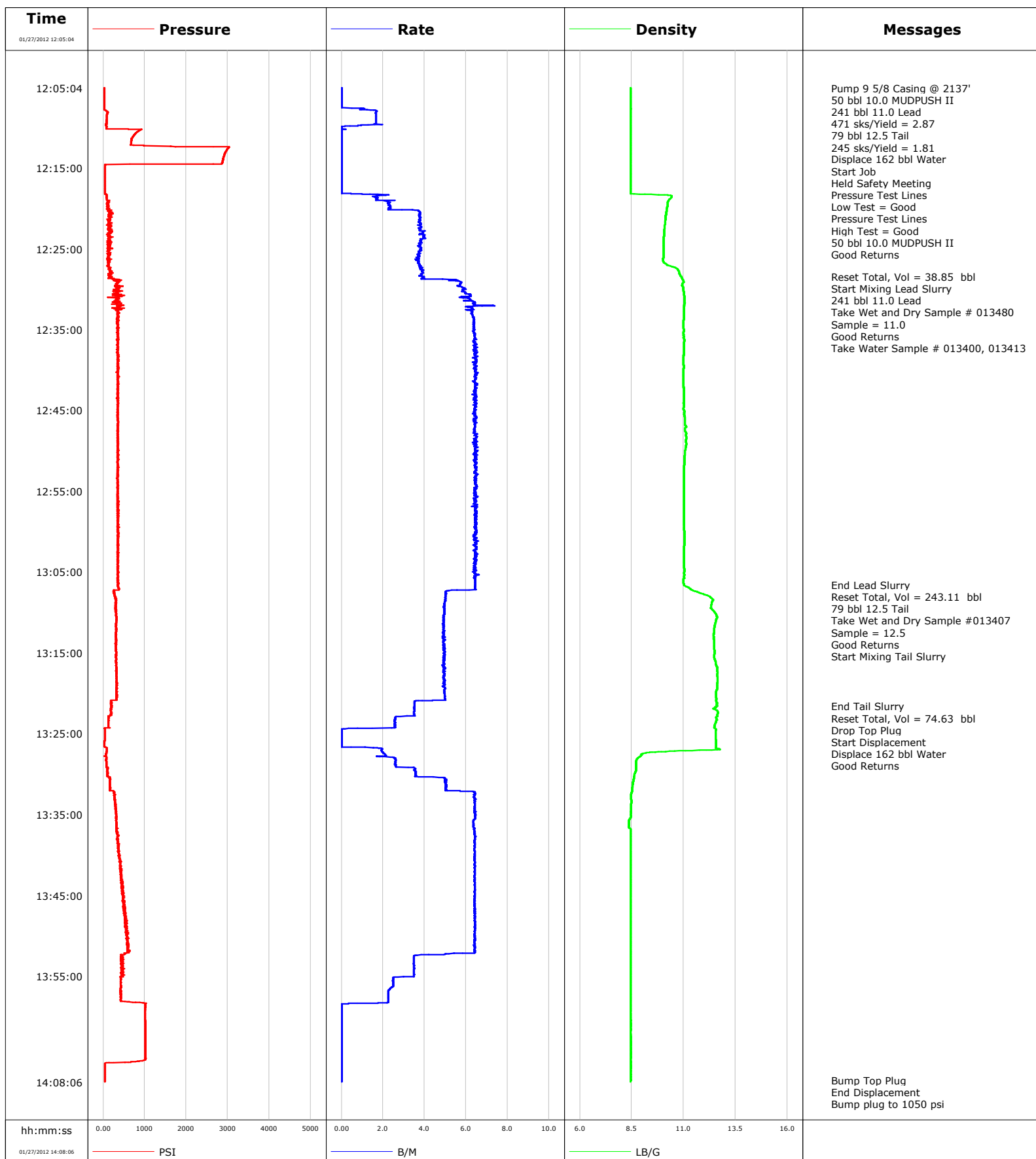


Well DW 8608C-28
Field N PARACHUTE
Engineer Tom Leduc
Country United States

Client ENCANA
SIR No.
Job Type 9 5/8 SURFACE
Job Date 01-27-2012





Cementing Service Report

				Customer ENCANA		Job Number BQMF-00627		
Well DW 8608C-28 DW 8608C-28			Location (legal) N PARACHUTE		Schlumberger Location Grand Junction		Job Start Jan/27/2012	
Field N PARACHUTE		Formation Name/Type Shale		Deviation 0 deg	Bit Size 14.8 in	Well MD 2137.0 ft		Well TVD 2137.0 ft
County GARFIELD		State/Province Colorado		BHP	BHST 110 degF	BHCT 91 degF	Pore Press. Gradient	
Well Master 0631292207		API/UWI						
Rig Name PATTERSON 308	Drilled For Gas	Service Via Land	Casing/Liner					
			Depth, ft	Size, in	Weight, lb/ft	Grade	Thread	
Offshore Zone	Well Class New	Well Type Development	2137.0	9.630	36.0	K55	8rd	
			0.0	0.000	0.0			
Drilling Fluid Type Bentonite		Max. Density 9.20 lb/gal	Plastic Viscosity 45.000 cP	Tubing/Drill Pipe				
				Depth,	Size,	Weight,	Grade	Thread
Service Line Cementing	Job Type 9 5/8 SURFACE							
Max. Allowed Tub. Press 3000 psi	Max. Allowed Ann. Press 500 psi	WH Connection Single Cement head	Perforations/Open Hole					
			Top,	Bottom,		No. of Shots	Total Interval	
Service Instructions 9 5/8 SURFACE @ 2100'							Diameter	
			Treat Down Casing	Displacement 159.0 bbl	Packer Type	Packer Depth		
			Tubing Vol.	Casing Vol. 160.0 bbl	Annular Vol. 257.0 bbl	Openhole Vol. 421.0 bbl		
Casing/Tubing Secured <input checked="" type="checkbox"/>		1 Hole Vol. Circulated prior to Cement <input checked="" type="checkbox"/>		Casing Tools		Squeeze Job		
Lift Pressure 1041 psi				Shoe Type Float		Squeeze Type		
Pipe Rotated <input type="checkbox"/>		Pipe Reciprocated <input type="checkbox"/>		Shoe Depth 2104.0 ft		Tool Type		
No. Centralizers	Top Plugs	Bottom Plugs	Stage Tool Type			Tool Depth		
Cement Head Type Single			Stage Tool Depth			Tail Pipe Size		
Job Scheduled For Jan/27/2012 05:00	Arrived on Location Jan/27/2012 10:00	Leave Location Jan/27/2012 17:00	Collar Type Float			Tail Pipe Depth		
			Collar Depth 2057.0 ft			Sqz. Total Vol.		
Date	Time 24-hr clock	Treating Pressure PSI	Flow Rate B/M	Density LB/G	Volume BBL	Message		
01/27/2012	12:05:04	30	0.0	8.45	0.0			
01/27/2012	12:05:05					Pump 9 5/8 Casing @ 2137'		
01/27/2012	12:05:05					50 bbl 10.0 MUDPUSH II		
01/27/2012	12:05:05					241 bbl 11.0 Lead		
01/27/2012	12:05:05					471 sks/Yield = 2.87		
01/27/2012	12:05:05					79 bbl 12.5 Tail		
01/27/2012	12:05:05	30	0.0	8.45	0.0			
01/27/2012	12:05:06					245 sks/Yield = 1.81		
01/27/2012	12:05:06					Displace 162 bbl Water		
01/27/2012	12:05:06					Start Job		
01/27/2012	12:05:06	30	0.0	8.45	0.0			
01/27/2012	12:05:08					Held Safety Meeting		
01/27/2012	12:05:08	30	0.0	8.45	0.0			
01/27/2012	12:05:09					Pressure Test Lines		
01/27/2012	12:05:09					Low Test = Good		
01/27/2012	12:05:09	30	0.0	8.45	0.0			
01/27/2012	12:05:10					Pressure Test Lines		
01/27/2012	12:05:10	30	0.0	8.45	0.0			
01/27/2012	12:05:11					High Test = Good		
01/27/2012	12:05:11					50 bbl 10.0 MUDPUSH II		
01/27/2012	12:05:11	30	0.0	8.45	0.0			

Well			Field		Job Start		Customer		Job Number	
DW 8608C-28 DW 8608C-28			N PARACHUTE		Jan/27/2012		ENCANA		BQMF-00627	
Date	Time 24-hr clock	Treating Pressure PSI	Flow Rate B/M	Density LB/G	Volume BBL	Message				
01/27/2012	12:05:12	30	0.0	8.45	0.0					
01/27/2012	12:06:44	31	0.0	8.45	0.0					
01/27/2012	12:08:24	92	1.7	8.45	1.2					
01/27/2012	12:10:04	78	0.0	8.44	3.5					
01/27/2012	12:11:44	677	0.0	8.44	3.5					
01/27/2012	12:13:24	2919	0.0	8.44	3.5					
01/27/2012	12:15:04	41	0.0	8.44	3.5					
01/27/2012	12:16:44	38	0.0	8.44	3.5					
01/27/2012	12:18:24	83	1.9	10.36	3.8					
01/27/2012	12:20:04	88	2.3	10.19	7.2					
01/27/2012	12:21:44	135	3.7	10.11	13.4					
01/27/2012	12:23:24	140	4.0	10.05	19.7					
01/27/2012	12:25:04	127	3.9	10.04	26.1					
01/27/2012	12:26:44	132	3.7	10.05	32.3					
01/27/2012	12:28:24	163	3.8	10.87	38.7					
01/27/2012	12:28:26					Reset Total, Vol = 38.85 bbl				
01/27/2012	12:28:26	181	3.9	10.88	38.8					
01/27/2012	12:28:29					Start Mixing Lead Slurry				
01/27/2012	12:28:29	203	4.0	10.88	39.0					
01/27/2012	12:28:30					241 bbl 11.0 Lead				
01/27/2012	12:28:30					Take Wet and Dry Sample # 013480				
01/27/2012	12:28:30					Sample = 11.0				
01/27/2012	12:28:30					Good Returns				
01/27/2012	12:28:30	131	3.9	10.89	39.1					
01/27/2012	12:28:31					Take Water Sample # 013400, 013413				
01/27/2012	12:28:31	185	3.9	10.89	39.2					
01/27/2012	12:30:04	282	5.8	10.98	47.6					
01/27/2012	12:31:44	431	6.4	11.05	57.7					
01/27/2012	12:33:24	336	6.4	11.01	68.3					
01/27/2012	12:35:04	337	6.4	11.00	78.9					
01/27/2012	12:36:44	354	6.5	11.02	89.6					
01/27/2012	12:38:24	377	6.5	11.00	100.3					
01/27/2012	12:40:04	363	6.4	11.00	111.1					
01/27/2012	12:41:44	367	6.5	11.00	121.8					
01/27/2012	12:43:24	364	6.4	11.01	132.6					
01/27/2012	12:45:04	349	6.4	11.03	143.3					
01/27/2012	12:46:44	348	6.5	11.05	154.0					
01/27/2012	12:48:24	346	6.5	11.14	164.7					
01/27/2012	12:50:04	358	6.5	11.06	175.5					
01/27/2012	12:51:44	358	6.4	11.03	186.3					
01/27/2012	12:53:24	331	6.4	11.02	197.0					
01/27/2012	12:55:04	345	6.4	11.01	207.8					
01/27/2012	12:56:44	349	6.5	11.00	218.5					
01/27/2012	12:58:24	358	6.4	11.02	229.3					
01/27/2012	13:00:04	362	6.4	11.03	240.1					
01/27/2012	13:01:44	348	6.4	11.03	250.8					
01/27/2012	13:03:24	347	6.4	11.02	261.6					
01/27/2012	13:05:04	373	6.4	11.02	272.3					
01/27/2012	13:06:34					End Lead Slurry				
01/27/2012	13:06:34					Reset Total, Vol = 243.11 bbl				
01/27/2012	13:06:34	354	6.4	11.00	282.0					
01/27/2012	13:06:35					79 bbl 12.5 Tail				
01/27/2012	13:06:35					Take Wet and Dry Sample #013407				
01/27/2012	13:06:35	354	6.5	11.00	282.1					

Well			Field		Job Start		Customer		Job Number	
DW 8608C-28 DW 8608C-28			N PARACHUTE		Jan/27/2012		ENCANA		BQMF-00627	
Date	Time 24-hr clock	Treating Pressure PSI	Flow Rate B/M	Density LB/G	Volume BBL	Message				
01/27/2012	13:06:36					Good Returns				
01/27/2012	13:06:36	358	6.5	11.00	282.2					
01/27/2012	13:06:44	351	6.4	11.07	283.0					
01/27/2012	13:08:12					Start Mixing Tail Slurry				
01/27/2012	13:08:12	296	5.0	12.31	291.1					
01/27/2012	13:08:24	307	5.0	12.40	292.1					
01/27/2012	13:10:04	316	4.9	12.50	300.4					
01/27/2012	13:11:44	298	4.9	12.49	308.6					
01/27/2012	13:13:24	312	5.0	12.46	316.8					
01/27/2012	13:15:04	314	4.9	12.48	325.0					
01/27/2012	13:16:44	315	4.9	12.60	333.3					
01/27/2012	13:18:24	327	5.0	12.62	341.5					
01/27/2012	13:20:04	327	5.0	12.56	349.7					
01/27/2012	13:21:37					End Tail Slurry				
01/27/2012	13:21:37	199	3.5	12.60	356.4					
01/27/2012	13:21:40					Reset Total, Vol = 74.63 bbl				
01/27/2012	13:21:40	205	3.5	12.58	356.6					
01/27/2012	13:21:41					Drop Top Plug				
01/27/2012	13:21:41	204	3.5	12.53	356.6					
01/27/2012	13:21:42					Start Displacement				
01/27/2012	13:21:42	204	3.5	12.53	356.7					
01/27/2012	13:21:44					Displace 162 bbl Water				
01/27/2012	13:21:44					Good Returns				
01/27/2012	13:21:44	192	3.5	12.51	356.8					
01/27/2012	13:23:24	127	2.6	12.57	362.2					
01/27/2012	13:25:04	40	0.0	12.54	364.6					
01/27/2012	13:26:44	85	1.5	12.56	364.6					
01/27/2012	13:28:24	75	2.6	8.70	368.2					
01/27/2012	13:30:04	106	3.5	8.64	373.4					
01/27/2012	13:31:44	167	5.0	8.52	381.3					
01/27/2012	13:33:24	292	6.4	8.48	391.5					
01/27/2012	13:35:04	318	6.5	8.45	402.2					
01/27/2012	13:36:44	318	6.4	8.42	412.8					
01/27/2012	13:38:24	364	6.4	8.45	423.5					
01/27/2012	13:40:04	396	6.4	8.45	434.2					
01/27/2012	13:41:44	422	6.4	8.45	444.9					
01/27/2012	13:43:24	455	6.4	8.45	455.6					
01/27/2012	13:45:04	473	6.4	8.45	466.3					
01/27/2012	13:46:44	504	6.4	8.45	477.0					
01/27/2012	13:48:24	528	6.4	8.45	487.7					
01/27/2012	13:50:04	572	6.4	8.45	498.4					
01/27/2012	13:51:44	616	6.4	8.45	509.1					
01/27/2012	13:53:24	425	3.5	8.45	516.5					
01/27/2012	13:55:04	486	3.5	8.45	522.3					
01/27/2012	13:56:44	416	2.3	8.45	526.5					
01/27/2012	13:58:24	1042	0.3	8.45	530.2					
01/27/2012	14:00:04	1011	0.0	8.45	530.2					
01/27/2012	14:01:44	1015	0.0	8.45	530.2					
01/27/2012	14:03:24	1019	0.0	8.45	530.2					
01/27/2012	14:05:04	1023	0.0	8.45	530.2					
01/27/2012	14:06:44	42	0.0	8.45	530.2					
01/27/2012	14:07:54					Bump Top Plug				
01/27/2012	14:07:54					End Displacement				
01/27/2012	14:07:54	42	0.0	8.45	530.2					

Well			Field		Job Start	Customer	Job Number
DW 8608C-28 DW 8608C-28			N PARACHUTE		Jan/27/2012	ENCANA	BQMF-00627
Date	Time 24-hr clock	Treating Pressure PSI	Flow Rate B/M	Density LB/G	Volume BBL	Message	
01/27/2012	14:07:57					Bled Off Pressure	
01/27/2012	14:07:57					0.5 bbl Back	
01/27/2012	14:07:57					Floats Held	
01/27/2012	14:07:57					100 bbl Cement to Surface	
01/27/2012	14:07:57					Wait on Parasite Line	
01/27/2012	14:07:57	42	0.0	8.45	530.2		
01/27/2012	14:57:58					Pump 10 bbl Sugar Water Through Parasite Line	
01/27/2012	14:57:58					Rig Down	

Post Job Summary

Average Pump Rates, bbl/min					Volume of Fluid Injected, bbl					
Slurry 5.3	N2		Mud 0.0	Maximum Rate 7.4	Total Slurry 530.2	Mud 0.0	Spacer 39.0	N2		
Treating Pressure Summary, psi					Breakdown Fluid					
Maximum 3038	Final 0	Average 391	Bump Plug to 900	Breakdown	Type		Volume		Density	
Avg. N2 Percent		Designed Slurry Volume 320.0 bbl		Displacement 173.6 bbl		Mix Water Temp 55 degF		Cement Circulated to Surface?	<input checked="" type="checkbox"/>	Volume
								Washed Thru Perfs	<input type="checkbox"/>	To
Customer or Authorized Representative Randy Burke				Schlumberger Supervisor Tom Leduc				Circulation Lost	<input type="checkbox"/>	Job Completed
								-		<input checked="" type="checkbox"/>