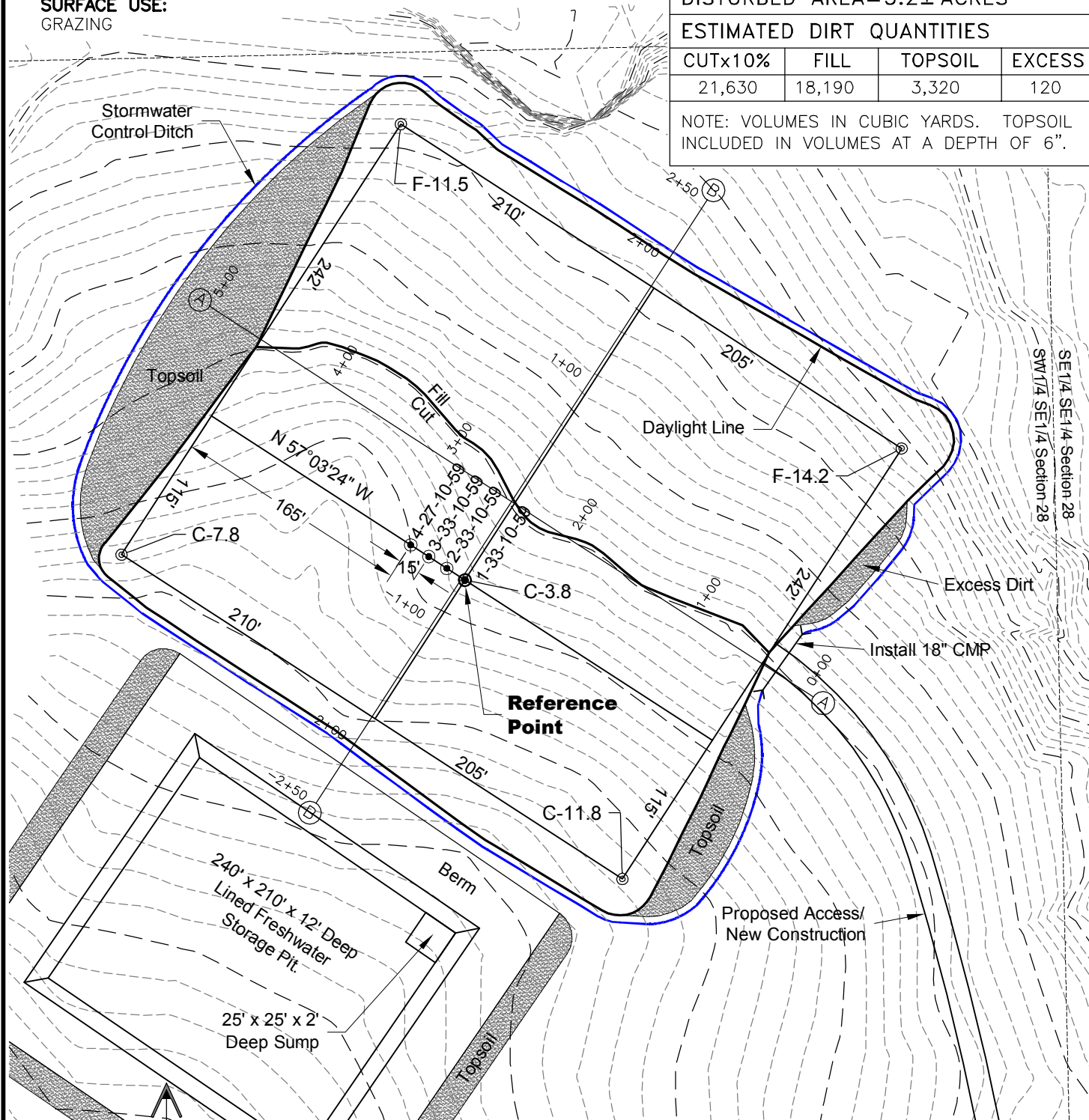


1 of 2

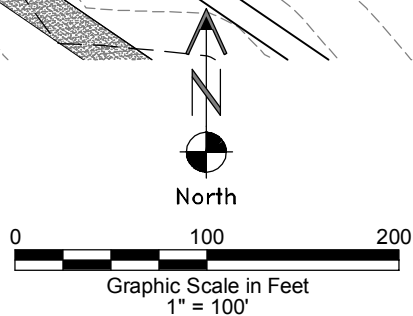
SURFACE USE:
GRAZING

PAD 357'X415' ELEV=5209.8'			
DISTURBED AREA=5.2± ACRES			
ESTIMATED DIRT QUANTITIES			
CUTx10%	FILL	TOPSOIL	EXCESS
21,630	18,190	3,320	120

NOTE: VOLUMES IN CUBIC YARDS. TOPSOIL INCLUDED IN VOLUMES AT A DEPTH OF 6".



NOTE:
10% ALLOWANCE IS MADE FOR SOIL EXPANSION.



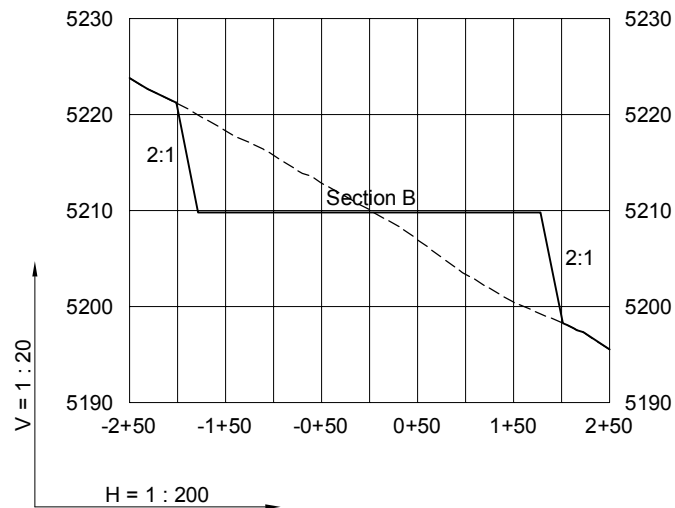
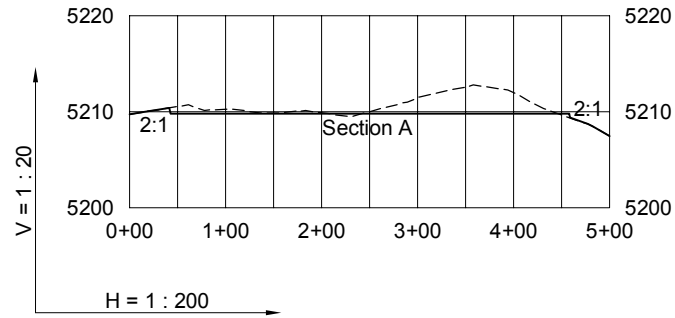
LAND SURVEYING AND MAPPING
LAFAYETTE - WINTER PARK
Ph 303 666 0379 Fx 303 665 6320

CARRIZO NIOBRARA LLC
NELSON RANCHES 1-33-10-59 PAD

SW1/4 SE1/4 SECTION 28 T10N R59W
6th PM WELD COUNTY COLORADO

CONSTRUCTION LAYOUT DRAWING

2 of 2



4/11/13

----- Existing Ground
 _____ Proposed Grade



LAND SURVEYING AND MAPPING
LAFAYETTE - WINTER PARK
 Ph 303 666 0379 Fx 303 665 6320

CARRIZO NIOBRARA LLC
NELSON RANCHES 1-33-10-59 PAD

SW1/4 SE1/4 SECTION 28 T10N R59W
6th PM WELD COUNTY COLORADO