

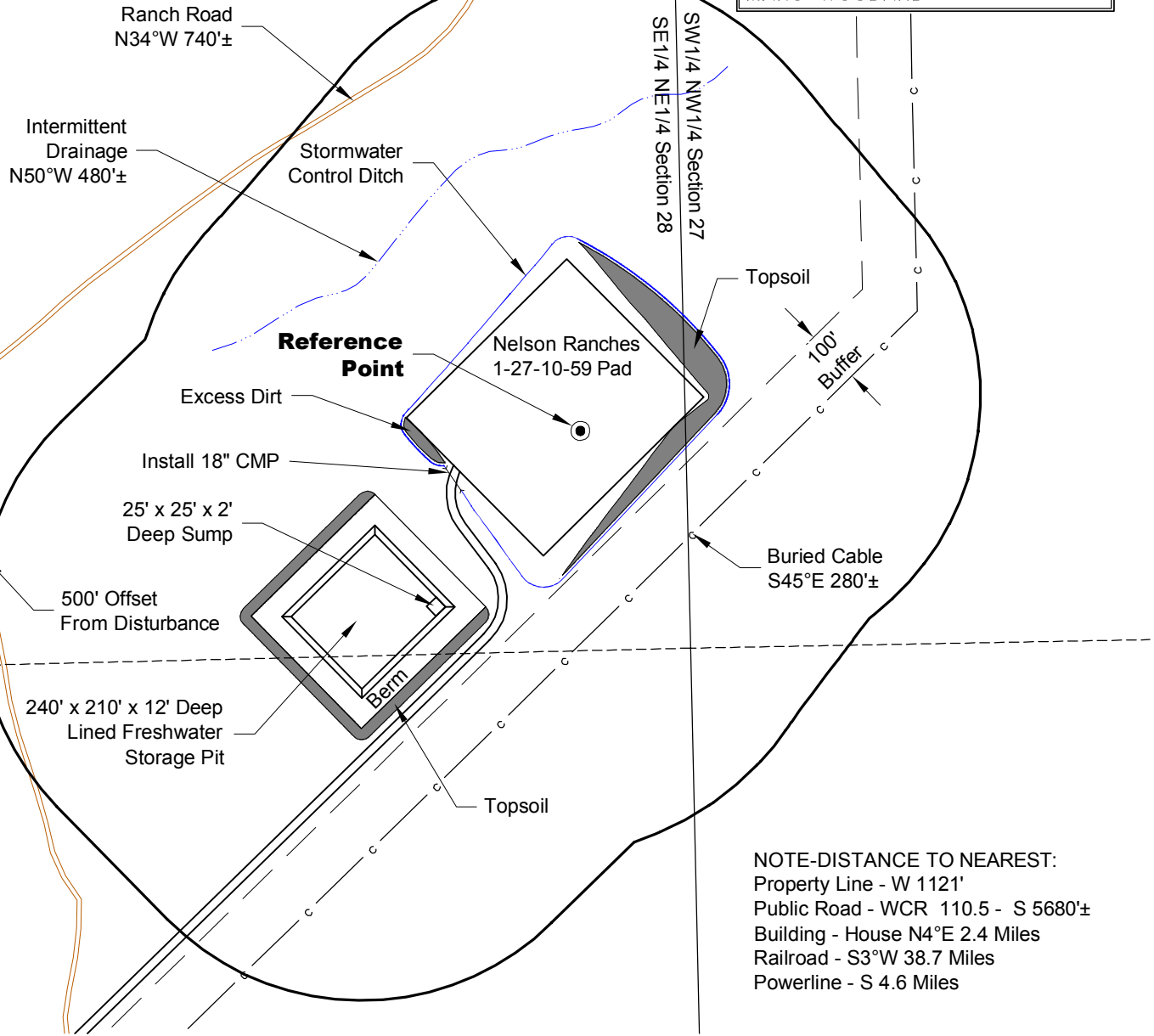
LOCATION DRAWING

VEGETATION:
DRY LAND PASTURE

SURFACE USE:
GRAZING

REFERENCE POINT

LATITUDE: 40.81006
LONGITUDE: -103.97566
FOOTAGE: 2219 FNL 193 FEL
GROUND ELEVATION: 5170.4
PDOP: 2.4 DATE: 2/6/2013
INSTRUMENT OPERATOR: MARC WOODARD



NOTE-DISTANCE TO NEAREST:
Property Line - W 1121'
Public Road - WCR 110.5 - S 5680'±
Building - House N4°E 2.4 Miles
Railroad - S3°W 38.7 Miles
Powerline - S 4.6 Miles

NOTE:
ALL PRODUCTION FACILITIES WILL BE ON PAD.

4/11/13

DISTURBANCE ACREAGE:
5.3± DRILLING OPERATIONS



0 300 600
Graphic Scale in Feet
1" = 300'

GEO SURV
LAND SURVEYING AND MAPPING
LAFAYETTE - WINTER PARK
Ph 303 666 0379 Fx 303 665 6320

CARRIZO NIOBRARA LLC
NELSON RANCHES 1-27-10-59 PAD
SE1/4 NE1/4 SECTION 28 T10N R59W
6th PM WELD COUNTY COLORADO