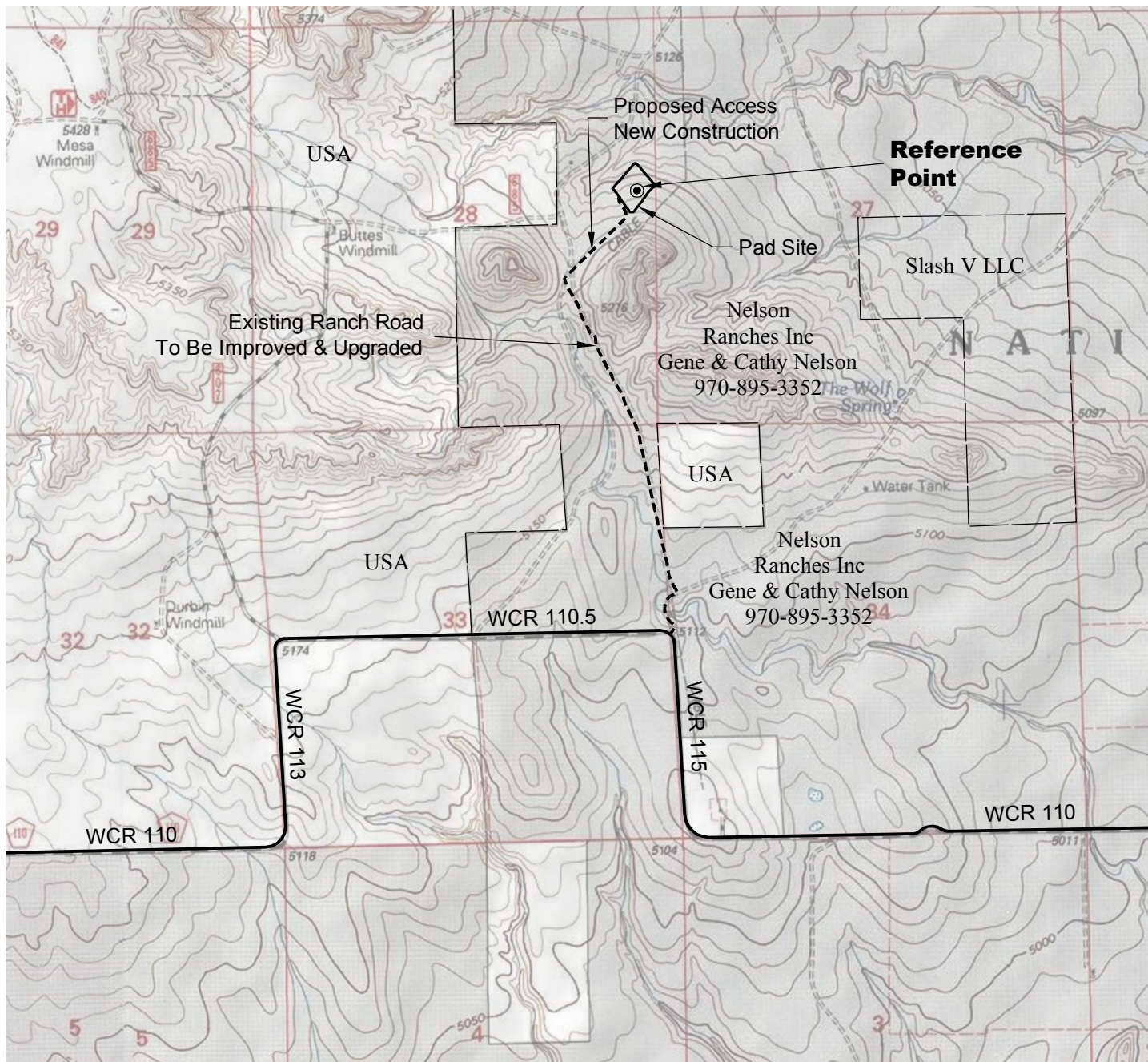


ACCESS ROAD MAP



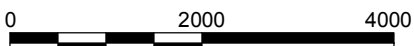
DRIVING DIRECTIONS:

From Town of Keota, beginning at intersection
of WCR 390 & WCR 103; North on WCR 390
MP 3.5 Right on WCR 104
MP 9.3 Left on WCR 111
MP 12.3 Right on WCR 110
MP 13.3 Left on WCR 113
MP 13.8 Right on WCR 110.5
MP 14.8 Left on Access to Nelson Ranches 1-27-10-59 Pad
MP 16.0 Nelson Ranches 1-27-10-59 Pad

4/11/13



North



Graphic Scale in Feet
1" = 2000'



LAND SURVEYING AND MAPPING
LAFAYETTE - WINTER PARK
Ph 303 666 0379 Fx 303 665 6320

CARRIZO NIOBRARA LLC
NELSON RANCHES 1-27-10-59 PAD

SE1/4 NE1/4 SECTION 28 T10N R59W
6th PM WELD COUNTY COLORADO