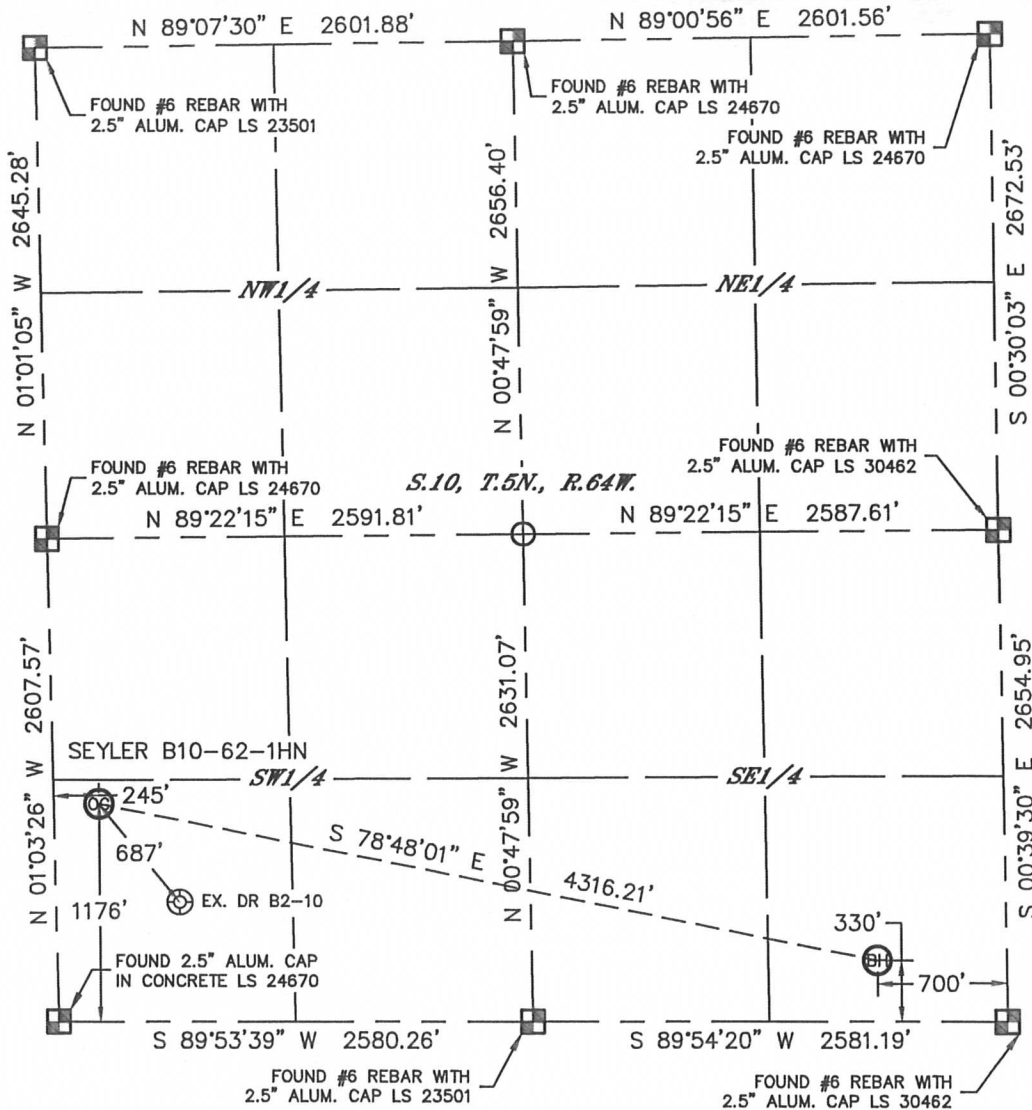


# WELL LOCATION CERTIFICATE

THIS MAP DOES NOT REPRESENT A BOUNDARY SURVEY

SECTION: 10  
TOWNSHIP: 5N  
RANGE: 64W



In accordance with a request from Jacob Rice with Noble Energy Inc., Lat40°, Inc. has determined the surface location of the SEYLER B10-62-1HN to be 1176' from the SOUTH line and 245' from the WEST line and the bottom hole to be 330' from the SOUTH line and 700' from the EAST line as measured at right angles from the section lines of Section 10, Township 5 North, Range 64 West of the Sixth Principal Meridian, County of Weld, State of Colorado.

I hereby state that this Well Location Certificate was prepared by me, or under my direct supervision, that the fieldwork was completed on 3/23/2012, for and on behalf of Noble Energy Inc. That this is not a Land Survey Plat or an Improvement Survey Plat, and that it is not to be relied upon for establishment of fence, building, or other future improvement lines.

## NOTE:

- 1) Bearings shown are Grid Bearings of the Colorado State Plane Coordinate System, North Zone, North American Datum 1983/2007. The lineal dimensions as contained herein are based upon the "U.S. Survey Foot."
- 2) Ground elevations are based on an observed GPS elevation (NAVD 1988 DATUM).
- 3) NEAREST EXISTING WELL: DR B2-10, 687'
- 4) IMPROVEMENTS: See LOCATION DRAWING for all visible Improvements within 400' of disturbed area.
- 5) SURFACE USE: CROPLAND
- 6) INSTRUMENT OPERATOR: WYATT HALL

## NOTE

According to Colorado law, you must commence any legal action based upon any defect in this W.L.C. within three years after you discover such defect. In no event, may any action based upon any defect in this survey be commenced more than ten years after the date of the certificate shown hereon. (13-80-105 C.R.S.)

## LEGEND

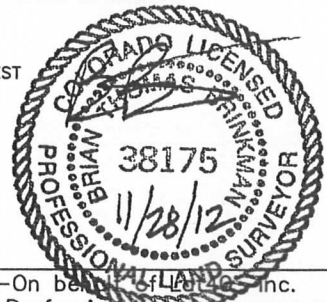
- = ALIQUOT MONUMENT AS DESCRIBED
- = CALCULATED POSITION

## SURFACE LOCATION

LAT: 40.40981N  
LONG: 104.54473W  
PDOP: 2.2  
ELEV: 4582'  
1/4, 1/4: SW1/4SW1/4  
NEAREST PROPERTY LINE: 245' WEST

## BOTTOM HOLE

LAT: 40.40738N  
LONG: 104.52956W



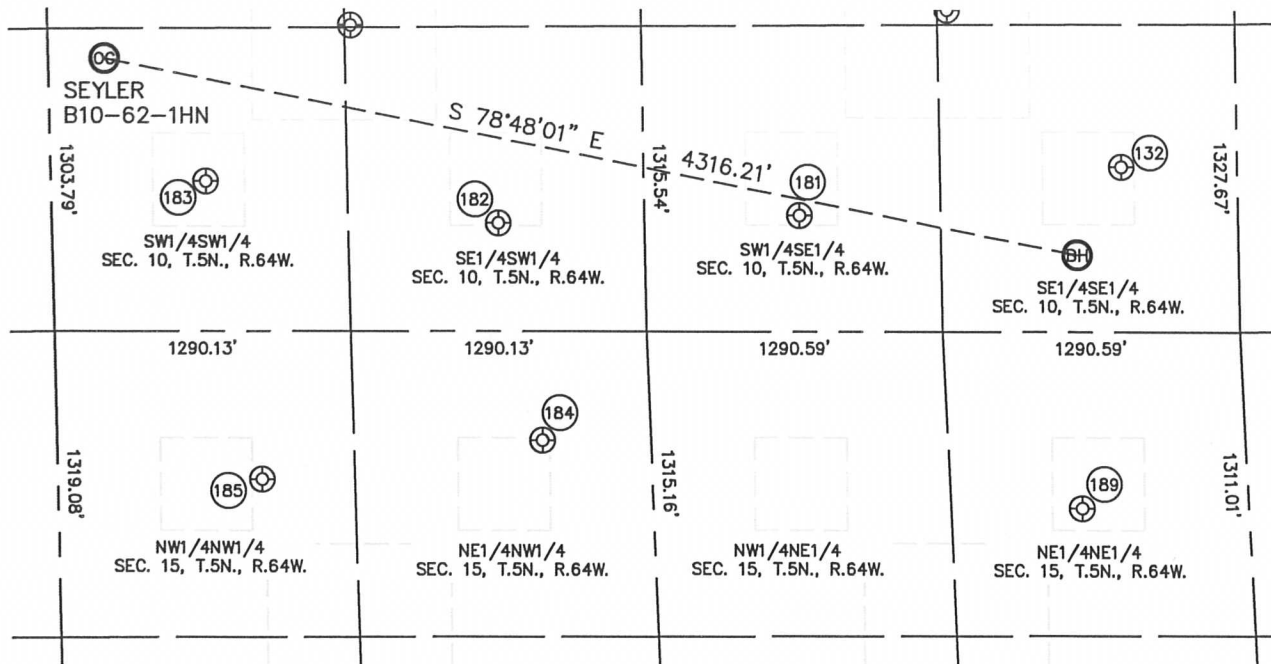
Brian T. Brinkman—On behalf of Lat40°, Inc.  
Colorado Licensed Professional Land Surveyor No. 38175  
DATE: 11/28/2012  
PROJECT#: 2012029

Lat40°, Inc. 1635 Foxtrail Drive, Suite 325 Loveland, CO 970-776-3321

# SITE SKETCH

SEYLER B10-62-1HN

SECTION: 10  
TOWNSHIP: 5N  
RANGE: 64W



132

SLW B10-16  
SE1/4SE1/4  
710' FSL  
503' FEL  
LAT-40.40842°N  
LONG-104.52886°W  
PDOP: 1.3  
ELEV: 4602'

181

TREBOR B10-15  
SW1/4SE1/4  
500' FSL  
1906' FEL  
LAT-40.40788°N  
LONG-104.53389°W  
PDOP: 1.3  
ELEV: 4596'

182

TREBOR B10-14  
SE1/4SW1/4  
466' FSL  
1943' FSL  
LAT-40.40782°N  
LONG-104.53861°W  
PDOP: 1.7  
ELEV: 4584'

183

DR 2-10  
SW1/4SW1/4  
645' FSL  
674' FSL  
LAT-40.40834°N  
LONG-104.54318°W  
PDOP: 1.5  
ELEV: 4581'

184

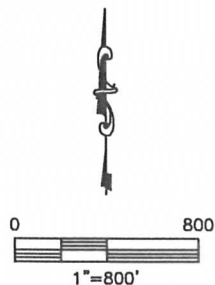
LOUSTALET 21-15  
NE1/4NW1/4  
469' FSL  
2113' FSL  
LAT-40.40525°N  
LONG-104.53798°W  
PDOP: 1.4  
ELEV: 4577'

185

DROEGEMULLER 11-15  
NW1/4NW1/4  
638' FSL  
890' FSL  
LAT-40.40481°N  
LONG-104.54237°W  
PDOP: 1.6  
ELEV: 4579'

189

LOUSTALET 41-15  
NE1/4NE1/4  
762' FSL  
721' FEL  
LAT-40.40438°N  
LONG-104.52955°W  
PDOP: 2.1  
ELEV: 4574'



DATE: 11/28/2012  
PROJECT#: 2012029