

Project: Wattenberg Field  
Site: B (Sec.10-T05N-R64W) Weld County, CO  
Well: Seyler B10-62-1HN  
Wellbore: Original Drilling  
Design: APD - Rev 0

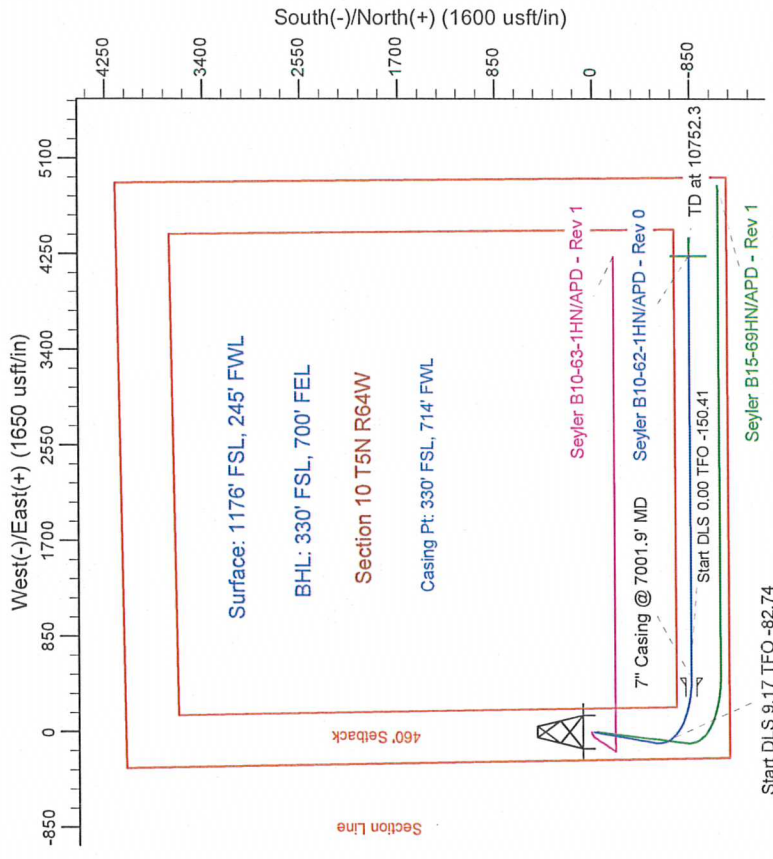
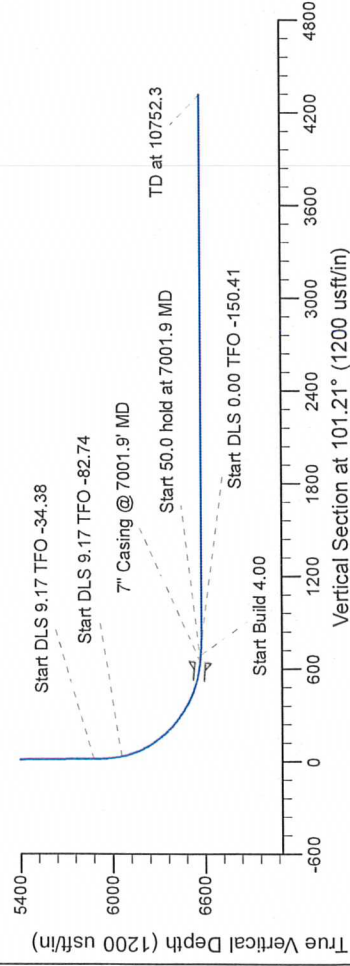
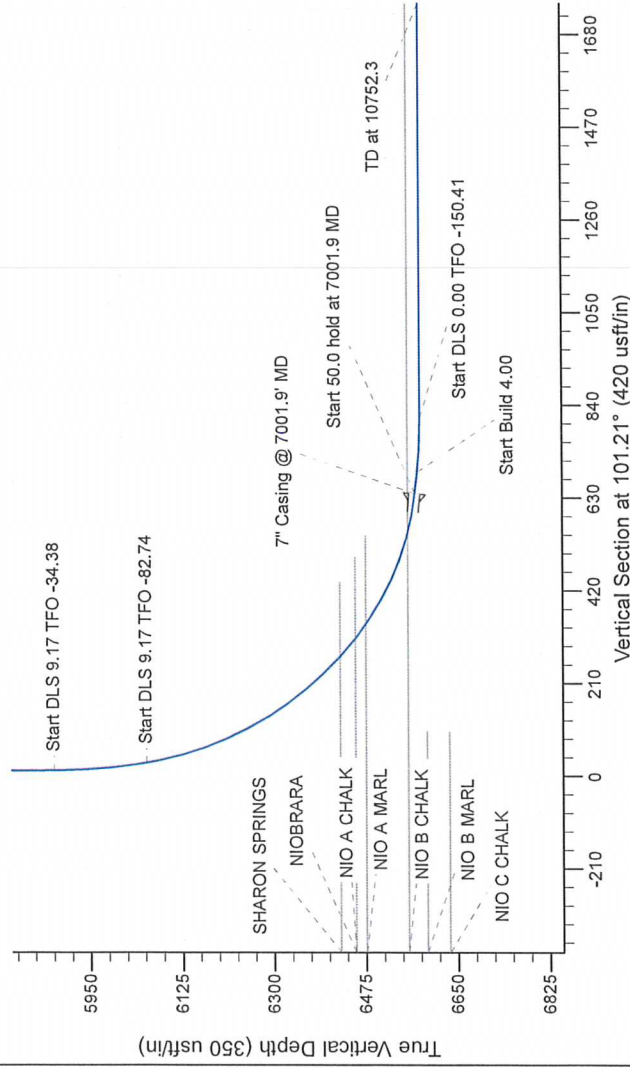
# Northern Region Drilling

Geodetic System: US State Plane 1983  
Datum: North American Datum 1983  
Ellipsoid: GRS 1980  
Zone: Colorado Northern Zone  
System Datum: Mean Sea Level

## SECTION DETAILS

Sec	MD	Inc	Azi	TVD	+N/-S	+E/-W	Dleg	TFace	VSect	Target
1	0.0	0.00	0.00	0.0	0.0	0.0	0.00	0.00	0.0	
2	3000.0	0.00	0.00	3000.0	0.0	0.0	0.00	0.00	0.0	
3	3600.0	12.00	190.00	3595.6	-61.7	-10.9	0.00	190.00	1.3	
4	5935.4	12.00	190.00	5880.0	-539.8	-95.2	0.00	0.00	11.6	
5	6124.0	28.00	169.06	6056.8	-603.1	-90.1	9.17	-34.38	28.8	
6	7001.9	85.00	89.90	6570.0	-846.0	484.0	9.17	-82.74	639.3	
7	7051.9	85.00	89.90	6574.4	-845.9	533.8	0.00	0.00	688.1	
8	7176.9	90.00	89.90	6579.8	-845.7	658.7	4.00	0.00	810.5	
9	10752.3	89.99	89.90	6580.0	-839.3	4234.0	0.00	-150.41	4316.4	

Seyler B10-62-1HN BHL 330'FSL, 700'FEL



**T G M**

Azimuths to Grid North  
True North: -0.62°  
Magnetic North: 7.85°

Magnetic Field  
Strength: 53009.5snT  
Dip Angle: 67.05°  
Date: 2/19/2013  
Model: IGRF200510

## WELL DETAILS: Seyler B10-62-1HN

North	East	Ground Level	Latitude	Longitude
1393566.97	3286008.94	4582.0	40.409610	-104.544730

## Plan: APD - Rev 0 (Seyler B10-62-1HN/Original Drilling)

Created By: Carrie Willers	Date: 17:58, February 19 2013
Checked:	Date:
Reviewed:	Date:
Approved:	Date: