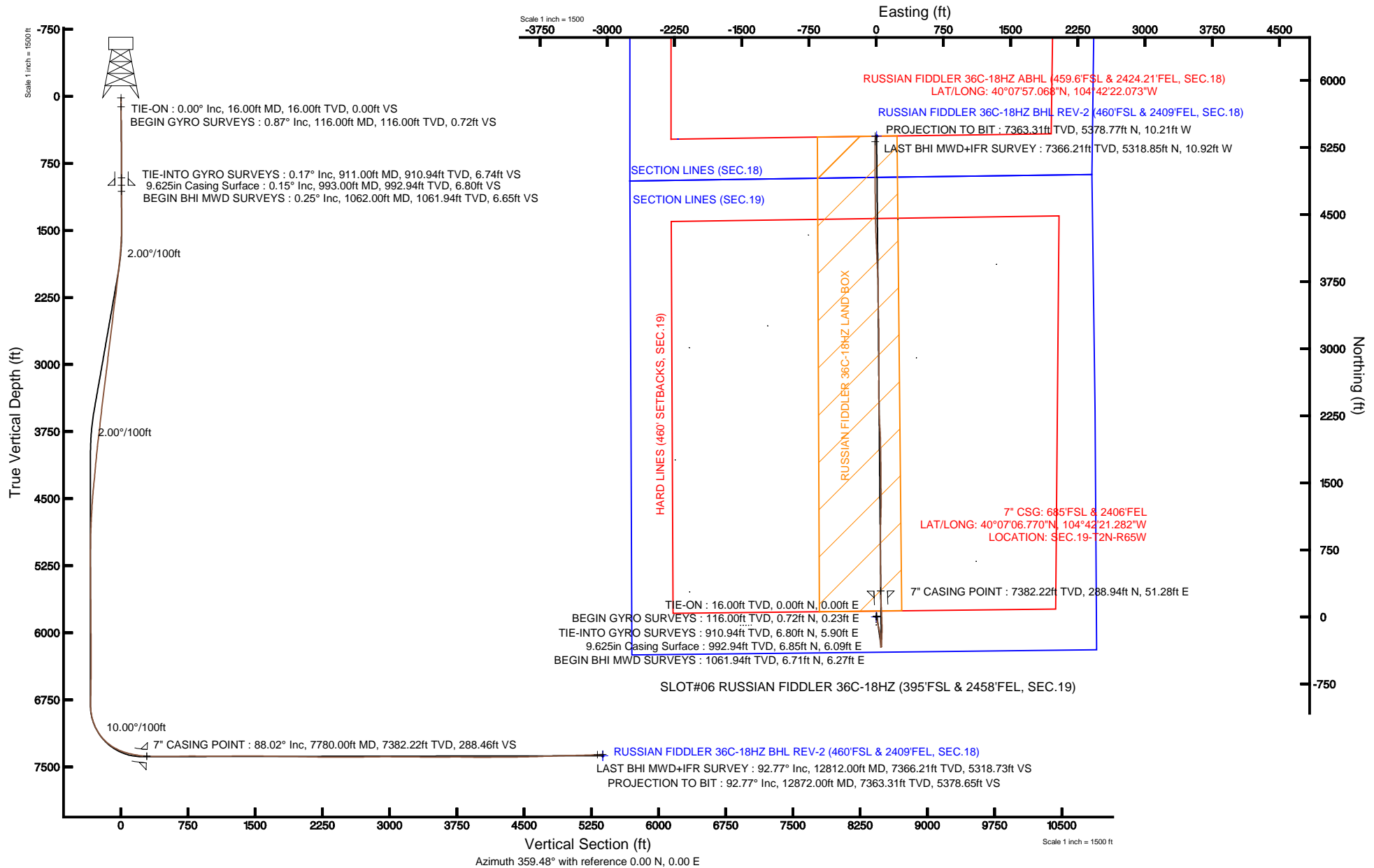


# KERR-MCGEE OIL & GAS ONSHORE LP

Location: COLORADO Slot: SLOT#06 RUSSIAN FIDDLER 36C-18HZ (395'FSL & 2458'FEL, SEC.19)  
 Field: WELD COUNTY (KERR MCGEE) Well: RUSSIAN FIDDLER 36C-18HZ  
 Facility: SEC.19-T2N-R65W Wellbore: RUSSIAN FIDDLER 36C-18HZ PWB

Plot reference wellpath is RUSSIAN FIDDLER 36C-18HZ (REV-A.0) PWP

True vertical depths are referenced to XTREME 6 (RKB)	Grid System: NAD83 / Lambert Colorado SP, Northern Zone (501), US feet
Measured depths are referenced to XTREME 6 (RKB)	North Reference: True north
XTREME 6 (RKB) to Mean Sea Level: 5005 feet	Scale: True distance
Mean Sea Level to Mud line (At Slot: SLOT#06 RUSSIAN FIDDLER 36C-18HZ (395'FSL & 2458'FEL, SEC.19)): 0 feet	Depths are in feet
Coordinates are in feet referenced to Slot	Created by: wilsjeff02 on 4/10/2013





# Actual Wellpath Report

**RUSSIAN FIDDLER 36C-18HZ AWP**  
Page 1 of 7



REFERENCE WELLPATH IDENTIFICATION			
Operator	KERR-MCGEE OIL & GAS ONSHORE LP	Slot	SLOT#06 RUSSIAN FIDDLER 36C-18HZ (395'FSL & 2458'FEL, SEC.19)
Area	COLORADO	Well	RUSSIAN FIDDLER 36C-18HZ
Field	WELD COUNTY (KERR MCGEE)	Wellbore	RUSSIAN FIDDLER 36C-18HZ AWB
Facility	SEC.19-T2N-R65W		

REPORT SETUP INFORMATION			
Projection System	NAD83 / Lambert Colorado SP, Northern Zone (501), US feet	Software System	WellArchitect® 3.0.2
North Reference	True	User	Wilsjef02
Scale	0.99996	Report Generated	4/10/2013 at 14:52:12
Convergence at slot	0.51° East	Database/Source file	WellArchitectDB/RUSSIAN_FIDDLER_36C-18HZ_AWB.xml

WELLPATH LOCATION						
	Local coordinates		Grid coordinates		Geographic coordinates	
	North[ft]	East[ft]	Easting[US ft]	Northing[US ft]	Latitude	Longitude
Slot Location	-4914.65	229.89	3222028.33	1286735.73	40°07'03.914"N	104°42'21.942"W
Facility Reference Pt			3221754.51	1291647.91	40°07'52.481"N	104°42'24.901"W
Field Reference Pt			3197771.84	1268891.29	40°04'09.600"N	104°47'36.000"W

WELLPATH DATUM			
Calculation method	<b>Minimum curvature</b>	XTREME 6 (RKB) to Facility Vertical Datum	<b>5005.00ft</b>
Horizontal Reference Pt	<b>Slot</b>	XTREME 6 (RKB) to Mean Sea Level	<b>5005.00ft</b>
Vertical Reference Pt	<b>XTREME 6 (RKB)</b>	XTREME 6 (RKB) to Mud Line at Slot (SLOT#06 RUSSIAN FIDDLER 36C-18HZ (395'FSL & 2458'FEL, SEC.19))	<b>5005.00ft</b>
MD Reference Pt	<b>XTREME 6 (RKB)</b>	Section Origin	<b>N 0.00, E 0.00 ft</b>
Field Vertical Reference	<b>Mean Sea Level</b>	Section Azimuth	<b>359.89°</b>



# Actual Wellpath Report

## RUSSIAN FIDDLER 36C-18HZ AWP

Page 2 of 7



REFERENCE WELLPATH IDENTIFICATION				
Operator	KERR-MCGEE OIL & GAS ONSHORE LP		Slot	SLOT#06 RUSSIAN FIDDLER 36C-18HZ (395'FSL & 2458'FEL, SEC.19)
Area	COLORADO		Well	RUSSIAN FIDDLER 36C-18HZ
Field	WELD COUNTY (KERR MCGEE)		Wellbore	RUSSIAN FIDDLER 36C-18HZ AWB
Facility	SEC.19-T2N-R65W			

WELLPATH DATA (163 stations) † = interpolated/extrapolated station										
MD [ft]	Inclination [°]	Azimuth [°]	TVD [ft]	Vert Sect [ft]	North [ft]	East [ft]	Latitude	Longitude	DLS [°/100ft]	Comments
0.00†	0.000	17.890	0.00	0.00	0.00	0.00	40°07'03.914"N	104°42'21.942"W	0.00	
16.00	0.000	17.890	16.00	0.00	0.00	0.00	40°07'03.914"N	104°42'21.942"W	0.00	TIE-ON
116.00	0.870	17.890	116.00	0.72	0.72	0.23	40°07'03.922"N	104°42'21.939"W	0.87	BEGIN GYRO SURVEYS
216.00	0.560	24.550	215.99	1.89	1.89	0.67	40°07'03.933"N	104°42'21.933"W	0.32	
316.00	0.870	40.910	315.98	2.91	2.91	1.37	40°07'03.943"N	104°42'21.924"W	0.37	
416.00	0.800	39.030	415.97	4.02	4.02	2.31	40°07'03.954"N	104°42'21.912"W	0.08	
516.00	0.770	41.030	515.96	5.07	5.07	3.19	40°07'03.965"N	104°42'21.901"W	0.04	
616.00	0.720	52.640	615.95	5.95	5.96	4.13	40°07'03.973"N	104°42'21.889"W	0.16	
716.00	0.280	38.350	715.95	6.52	6.53	4.78	40°07'03.979"N	104°42'21.880"W	0.45	
816.00	0.510	91.800	815.95	6.70	6.71	5.38	40°07'03.981"N	104°42'21.873"W	0.41	
911.00	0.170	44.940	910.94	6.79	6.80	5.90	40°07'03.982"N	104°42'21.866"W	0.43	TIE-INTO GYRO SURVEYS
1062.00	0.250	138.490	1061.94	6.70	6.71	6.27	40°07'03.981"N	104°42'21.861"W	0.21	BEGIN BHI MWD SURVEYS
1154.00	0.030	127.290	1153.94	6.53	6.55	6.43	40°07'03.979"N	104°42'21.859"W	0.24	
1245.00	0.150	334.390	1244.94	6.63	6.64	6.39	40°07'03.980"N	104°42'21.860"W	0.19	
1337.00	0.700	280.960	1336.94	6.84	6.85	5.79	40°07'03.982"N	104°42'21.867"W	0.68	
1427.00	0.890	286.230	1426.93	7.14	7.15	4.58	40°07'03.985"N	104°42'21.883"W	0.23	
1520.00	1.140	201.360	1519.92	6.49	6.49	3.55	40°07'03.979"N	104°42'21.896"W	1.49	
1612.00	2.770	177.240	1611.87	3.41	3.42	3.32	40°07'03.948"N	104°42'21.899"W	1.95	
1703.00	4.260	168.900	1702.69	-2.10	-2.09	4.08	40°07'03.894"N	104°42'21.890"W	1.73	
1797.00	5.510	175.400	1796.35	-10.03	-10.02	5.11	40°07'03.815"N	104°42'21.876"W	1.45	
1889.00	6.790	171.240	1887.82	-19.81	-19.80	6.30	40°07'03.719"N	104°42'21.861"W	1.47	
1974.00	6.720	166.600	1972.23	-29.62	-29.60	8.21	40°07'03.622"N	104°42'21.836"W	0.65	
2059.00	6.630	168.520	2056.65	-39.27	-39.25	10.34	40°07'03.527"N	104°42'21.809"W	0.28	
2145.00	6.360	168.870	2142.10	-48.81	-48.79	12.25	40°07'03.432"N	104°42'21.784"W	0.32	
2229.00	7.710	168.490	2225.47	-58.90	-58.87	14.27	40°07'03.333"N	104°42'21.758"W	1.61	
2313.00	7.390	168.640	2308.74	-69.72	-69.69	16.46	40°07'03.226"N	104°42'21.730"W	0.38	
2398.00	7.220	169.480	2393.05	-80.34	-80.30	18.51	40°07'03.121"N	104°42'21.704"W	0.24	
2483.00	6.680	170.570	2477.42	-90.47	-90.43	20.30	40°07'03.021"N	104°42'21.681"W	0.65	
2569.00	7.630	165.780	2562.75	-100.94	-100.90	22.52	40°07'02.917"N	104°42'21.652"W	1.30	
2654.00	7.360	163.760	2647.03	-111.64	-111.60	25.43	40°07'02.812"N	104°42'21.615"W	0.44	
2739.00	6.650	162.890	2731.39	-121.58	-121.53	28.40	40°07'02.713"N	104°42'21.576"W	0.84	
2824.00	7.120	166.990	2815.78	-131.42	-131.36	31.03	40°07'02.616"N	104°42'21.543"W	0.80	
2910.00	7.010	164.630	2901.13	-141.68	-141.62	33.62	40°07'02.515"N	104°42'21.509"W	0.36	
2995.00	7.100	168.380	2985.48	-151.83	-151.76	36.06	40°07'02.415"N	104°42'21.478"W	0.55	
3080.00	7.180	170.260	3069.83	-162.22	-162.14	38.01	40°07'02.312"N	104°42'21.453"W	0.29	
3166.00	6.900	170.770	3155.18	-172.62	-172.54	39.75	40°07'02.209"N	104°42'21.430"W	0.33	
3251.00	6.600	170.370	3239.59	-182.47	-182.40	41.39	40°07'02.112"N	104°42'21.409"W	0.36	
3336.00	7.310	176.680	3323.96	-192.69	-192.61	42.52	40°07'02.011"N	104°42'21.395"W	1.23	
3421.00	6.950	175.830	3408.31	-203.22	-203.14	43.21	40°07'01.907"N	104°42'21.386"W	0.44	
3506.00	6.830	174.630	3492.69	-213.38	-213.30	44.05	40°07'01.807"N	104°42'21.375"W	0.22	
3591.00	6.330	171.050	3577.13	-223.05	-222.96	45.25	40°07'01.711"N	104°42'21.360"W	0.76	
3677.00	6.060	181.400	3662.63	-232.27	-232.18	45.88	40°07'01.620"N	104°42'21.351"W	1.33	
3762.00	6.580	183.740	3747.12	-241.61	-241.53	45.45	40°07'01.528"N	104°42'21.357"W	0.68	
3847.00	7.110	173.110	3831.51	-251.70	-251.61	45.77	40°07'01.428"N	104°42'21.353"W	1.61	
3932.00	6.350	172.860	3915.93	-261.59	-261.50	46.98	40°07'01.330"N	104°42'21.337"W	0.89	



# Actual Wellpath Report

## RUSSIAN FIDDLER 36C-18HZ AWP



REFERENCE WELLPATH IDENTIFICATION				
Operator	KERR-MCGEE OIL & GAS ONSHORE LP		Slot	SLOT#06 RUSSIAN FIDDLER 36C-18HZ (395'FSL & 2458'FEL, SEC.19)
Area	COLORADO		Well	RUSSIAN FIDDLER 36C-18HZ
Field	WELD COUNTY (KERR MCGEE)		Wellbore	RUSSIAN FIDDLER 36C-18HZ AWB
Facility	SEC.19-T2N-R65W			

WELLPATH DATA (163 stations)										
MD [ft]	Inclination [°]	Azimuth [°]	TVD [ft]	Vert Sect [ft]	North [ft]	East [ft]	Latitude	Longitude	DLS [°/100ft]	Comments
4017.00	5.800	173.920	4000.45	-270.52	-270.43	48.02	40°07'01.242"N	104°42'21.324"W	0.66	
4103.00	5.580	173.000	4086.03	-279.00	-278.90	48.99	40°07'01.158"N	104°42'21.311"W	0.28	
4188.00	4.620	175.490	4170.69	-286.51	-286.42	49.76	40°07'01.084"N	104°42'21.301"W	1.16	
4273.00	5.650	175.730	4255.35	-294.10	-294.00	50.34	40°07'01.009"N	104°42'21.294"W	1.21	
4359.00	5.750	178.140	4340.92	-302.63	-302.53	50.80	40°07'00.925"N	104°42'21.288"W	0.30	
4444.00	4.780	182.800	4425.56	-310.42	-310.32	50.77	40°07'00.848"N	104°42'21.289"W	1.25	
4529.00	4.520	186.240	4510.28	-317.28	-317.19	50.23	40°07'00.780"N	104°42'21.295"W	0.45	
4613.00	3.290	184.430	4594.09	-322.98	-322.88	49.68	40°07'00.724"N	104°42'21.303"W	1.47	
4699.00	3.050	168.510	4679.96	-327.68	-327.59	49.95	40°07'00.677"N	104°42'21.299"W	1.06	
4783.00	2.840	165.730	4763.84	-331.89	-331.79	50.91	40°07'00.636"N	104°42'21.287"W	0.30	
4869.00	2.290	166.840	4849.76	-335.63	-335.53	51.82	40°07'00.599"N	104°42'21.275"W	0.64	
4954.00	1.170	132.290	4934.72	-337.87	-337.77	52.85	40°07'00.577"N	104°42'21.262"W	1.74	
5039.00	0.950	135.110	5019.71	-338.95	-338.85	53.99	40°07'00.566"N	104°42'21.247"W	0.27	
5125.00	0.500	104.240	5105.70	-339.55	-339.45	54.86	40°07'00.560"N	104°42'21.236"W	0.68	
5210.00	0.430	65.930	5190.70	-339.51	-339.41	55.51	40°07'00.560"N	104°42'21.228"W	0.37	
5295.00	0.250	49.660	5275.69	-339.27	-339.16	55.94	40°07'00.563"N	104°42'21.222"W	0.24	
5380.00	0.320	27.250	5360.69	-338.94	-338.83	56.19	40°07'00.566"N	104°42'21.219"W	0.15	
5465.00	0.480	354.220	5445.69	-338.37	-338.26	56.26	40°07'00.572"N	104°42'21.218"W	0.32	
5550.00	0.570	346.610	5530.69	-337.60	-337.50	56.13	40°07'00.579"N	104°42'21.220"W	0.13	
5636.00	0.490	342.280	5616.68	-336.84	-336.73	55.92	40°07'00.587"N	104°42'21.222"W	0.10	
5721.00	0.560	345.670	5701.68	-336.09	-335.98	55.70	40°07'00.594"N	104°42'21.225"W	0.09	
5806.00	0.630	338.990	5786.68	-335.25	-335.14	55.43	40°07'00.602"N	104°42'21.228"W	0.12	
5891.00	0.240	49.060	5871.67	-334.70	-334.59	55.40	40°07'00.608"N	104°42'21.229"W	0.70	
5977.00	0.460	68.060	5957.67	-334.45	-334.34	55.86	40°07'00.610"N	104°42'21.223"W	0.29	
6062.00	0.520	72.720	6042.67	-334.21	-334.10	56.54	40°07'00.613"N	104°42'21.214"W	0.08	
6147.00	0.440	73.130	6127.67	-334.00	-333.89	57.22	40°07'00.615"N	104°42'21.205"W	0.09	
6232.00	0.450	104.150	6212.66	-333.99	-333.88	57.86	40°07'00.615"N	104°42'21.197"W	0.28	
6318.00	0.340	90.700	6298.66	-334.08	-333.97	58.44	40°07'00.614"N	104°42'21.190"W	0.17	
6403.00	0.150	125.250	6383.66	-334.14	-334.03	58.78	40°07'00.613"N	104°42'21.185"W	0.27	
6488.00	0.180	325.210	6468.66	-334.10	-333.99	58.80	40°07'00.614"N	104°42'21.185"W	0.38	
6573.00	0.910	199.470	6553.66	-334.62	-334.51	58.50	40°07'00.609"N	104°42'21.189"W	1.21	
6658.00	0.850	195.750	6638.65	-335.87	-335.76	58.10	40°07'00.596"N	104°42'21.194"W	0.10	
6743.00	0.850	204.460	6723.64	-337.05	-336.94	57.67	40°07'00.585"N	104°42'21.200"W	0.15	
6828.00	0.370	254.040	6808.63	-337.70	-337.59	57.14	40°07'00.578"N	104°42'21.206"W	0.79	
6871.00	3.400	5.770	6851.61	-336.46	-336.36	57.14	40°07'00.590"N	104°42'21.207"W	8.26	
6913.00	8.230	4.370	6893.38	-332.23	-332.12	57.49	40°07'00.632"N	104°42'21.202"W	11.50	
6956.00	11.980	8.280	6935.71	-324.74	-324.63	58.37	40°07'00.706"N	104°42'21.191"W	8.86	
6998.00	16.080	6.560	6976.44	-314.65	-314.53	59.66	40°07'00.806"N	104°42'21.174"W	9.81	
7041.00	20.460	3.590	7017.27	-301.23	-301.11	60.82	40°07'00.939"N	104°42'21.159"W	10.41	
7084.00	24.770	0.140	7056.95	-284.71	-284.59	61.31	40°07'01.102"N	104°42'21.153"W	10.48	
7126.00	29.340	0.860	7094.35	-265.61	-265.50	61.48	40°07'01.291"N	104°42'21.151"W	10.91	
7169.00	33.980	1.610	7130.94	-243.06	-242.94	61.98	40°07'01.514"N	104°42'21.144"W	10.83	
7211.00	38.900	2.510	7164.72	-218.13	-218.02	62.89	40°07'01.760"N	104°42'21.133"W	11.78	
7254.00	43.600	1.740	7197.04	-189.81	-189.69	63.93	40°07'02.040"N	104°42'21.119"W	10.99	
7297.00	48.920	1.090	7226.76	-158.77	-158.65	64.69	40°07'02.347"N	104°42'21.109"W	12.42	



# Actual Wellpath Report

## RUSSIAN FIDDLER 36C-18HZ AWP



REFERENCE WELLPATH IDENTIFICATION				
Operator	KERR-MCGEE OIL & GAS ONSHORE LP		Slot	SLOT#06 RUSSIAN FIDDLER 36C-18HZ (395'FSL & 2458'FEL, SEC.19)
Area	COLORADO		Well	RUSSIAN FIDDLER 36C-18HZ
Field	WELD COUNTY (KERR MCGEE)		Wellbore	RUSSIAN FIDDLER 36C-18HZ AWB
Facility	SEC.19-T2N-R65W			

WELLPATH DATA (163 stations)										
MD [ft]	Inclination [°]	Azimuth [°]	TVD [ft]	Vert Sect [ft]	North [ft]	East [ft]	Latitude	Longitude	DLS [°/100ft]	Comments
7340.00	53.110	359.600	7253.80	-125.35	-125.23	64.88	40°07'02.677"N	104°42'21.107"W	10.11	
7382.00	58.100	358.750	7277.52	-90.71	-90.59	64.37	40°07'03.019"N	104°42'21.113"W	12.00	
7425.00	62.510	358.260	7298.82	-53.38	-53.26	63.39	40°07'03.388"N	104°42'21.126"W	10.30	
7467.00	66.750	357.880	7316.81	-15.46	-15.34	62.11	40°07'03.763"N	104°42'21.142"W	10.13	
7510.00	70.160	357.640	7332.60	24.51	24.62	60.55	40°07'04.158"N	104°42'21.163"W	7.95	
7552.00	74.090	357.130	7345.49	64.43	64.54	58.72	40°07'04.552"N	104°42'21.186"W	9.43	
7594.00	76.770	357.270	7356.05	105.03	105.14	56.74	40°07'04.953"N	104°42'21.212"W	6.39	
7637.00	79.290	357.570	7364.97	147.05	147.16	54.85	40°07'05.369"N	104°42'21.236"W	5.90	
7680.00	81.470	357.980	7372.15	189.42	189.52	53.20	40°07'05.787"N	104°42'21.257"W	5.16	
7722.00	83.440	358.840	7377.67	231.04	231.14	52.05	40°07'06.199"N	104°42'21.272"W	5.11	
7744.00	84.720	359.330	7379.94	252.92	253.02	51.70	40°07'06.415"N	104°42'21.277"W	6.23	
7780.00	88.020	359.330	7382.22	288.84	288.94	51.28	40°07'06.770"N	104°42'21.282"W	9.17	7" CASING POINT
7845.00	87.900	359.510	7384.53	353.80	353.89	50.62	40°07'07.412"N	104°42'21.290"W	0.33	
7930.00	89.870	359.890	7386.19	438.78	438.87	50.17	40°07'08.251"N	104°42'21.296"W	2.36	
8015.00	90.120	359.560	7386.19	523.77	523.87	49.77	40°07'09.091"N	104°42'21.301"W	0.49	
8100.00	90.970	359.140	7385.38	608.77	608.86	48.80	40°07'09.931"N	104°42'21.314"W	1.12	
8186.00	92.150	0.370	7383.04	694.73	694.82	48.43	40°07'10.781"N	104°42'21.319"W	1.98	
8271.00	90.090	359.310	7381.38	779.71	779.80	48.20	40°07'11.620"N	104°42'21.322"W	2.73	
8356.00	89.320	0.180	7381.82	864.71	864.80	47.82	40°07'12.460"N	104°42'21.326"W	1.37	
8441.00	88.800	0.160	7383.21	949.69	949.79	48.07	40°07'13.300"N	104°42'21.323"W	0.61	
8526.00	90.580	1.670	7383.67	1034.67	1034.77	49.43	40°07'14.140"N	104°42'21.306"W	2.75	
8611.00	90.640	1.640	7382.77	1119.63	1119.73	51.88	40°07'14.980"N	104°42'21.274"W	0.08	
8696.00	90.550	1.160	7381.89	1204.59	1204.70	53.96	40°07'15.819"N	104°42'21.247"W	0.57	
8782.00	90.210	359.830	7381.32	1290.58	1290.69	54.70	40°07'16.669"N	104°42'21.238"W	1.60	
8867.00	90.650	0.000	7380.68	1375.58	1375.69	54.58	40°07'17.509"N	104°42'21.239"W	0.55	
8952.00	89.480	359.130	7380.58	1460.58	1460.68	53.93	40°07'18.349"N	104°42'21.248"W	1.72	
9035.00	89.880	0.030	7381.04	1543.57	1543.68	53.32	40°07'19.169"N	104°42'21.256"W	1.19	
9120.00	88.520	359.000	7382.23	1628.56	1628.66	52.60	40°07'20.009"N	104°42'21.265"W	2.01	
9205.00	89.500	359.890	7383.70	1713.54	1713.65	51.78	40°07'20.849"N	104°42'21.275"W	1.56	
9290.00	89.080	359.030	7384.75	1798.53	1798.63	50.98	40°07'21.689"N	104°42'21.286"W	1.13	
9375.00	89.850	358.980	7385.55	1883.52	1883.62	49.50	40°07'22.529"N	104°42'21.305"W	0.91	
9460.00	88.770	358.830	7386.57	1968.50	1968.59	47.88	40°07'23.368"N	104°42'21.326"W	1.28	
9546.00	88.460	357.750	7388.65	2054.44	2054.53	45.31	40°07'24.217"N	104°42'21.359"W	1.31	
9631.00	88.700	356.090	7390.76	2139.30	2139.38	40.75	40°07'25.056"N	104°42'21.417"W	1.97	
9716.00	89.880	357.380	7391.81	2224.16	2224.23	35.91	40°07'25.894"N	104°42'21.480"W	2.06	
9801.00	89.230	357.720	7392.47	2309.08	2309.15	32.27	40°07'26.734"N	104°42'21.527"W	0.86	
9886.00	90.220	359.090	7392.88	2394.05	2394.11	29.91	40°07'27.573"N	104°42'21.557"W	1.99	
9972.00	89.820	359.060	7392.85	2480.04	2480.10	28.52	40°07'28.423"N	104°42'21.575"W	0.47	
10057.00	90.060	0.650	7392.94	2565.04	2565.10	28.30	40°07'29.263"N	104°42'21.578"W	1.89	
10142.00	90.460	0.640	7392.55	2650.03	2650.09	29.26	40°07'30.103"N	104°42'21.565"W	0.47	
10227.00	91.080	0.700	7391.41	2735.01	2735.08	30.26	40°07'30.943"N	104°42'21.553"W	0.73	
10312.00	90.520	0.110	7390.22	2820.00	2820.07	30.86	40°07'31.783"N	104°42'21.545"W	0.96	
10396.00	91.080	0.170	7389.05	2903.99	2904.06	31.06	40°07'32.613"N	104°42'21.542"W	0.67	
10482.00	89.260	359.360	7388.79	2989.99	2990.05	30.71	40°07'33.462"N	104°42'21.547"W	2.32	
10567.00	89.350	359.600	7389.82	3074.98	3075.04	29.94	40°07'34.302"N	104°42'21.557"W	0.30	



# Actual Wellpath Report

## RUSSIAN FIDDLER 36C-18HZ AWP



REFERENCE WELLPATH IDENTIFICATION				
Operator	KERR-MCGEE OIL & GAS ONSHORE LP		Slot	SLOT#06 RUSSIAN FIDDLER 36C-18HZ (395'FSL & 2458'FEL, SEC.19)
Area	COLORADO		Well	RUSSIAN FIDDLER 36C-18HZ
Field	WELD COUNTY (KERR MCGEE)		Wellbore	RUSSIAN FIDDLER 36C-18HZ AWB
Facility	SEC.19-T2N-R65W			

WELLPATH DATA (163 stations)											
MD [ft]	Inclination [°]	Azimuth [°]	TVD [ft]	Vert Sect [ft]	North [ft]	East [ft]	Latitude	Longitude	DLS [°/100ft]	Comments	
10652.00	90.830	0.150	7389.69	3159.98	3160.04	29.75	40°07'35.142"N	104°42'21.559"W	1.86		
10737.00	88.820	358.660	7389.95	3244.97	3245.03	28.87	40°07'35.982"N	104°42'21.570"W	2.94		
10822.00	89.160	358.700	7391.45	3329.93	3329.99	26.91	40°07'36.822"N	104°42'21.596"W	0.40		
10907.00	89.470	358.550	7392.47	3414.91	3414.96	24.87	40°07'37.661"N	104°42'21.622"W	0.41		
10992.00	89.780	359.320	7393.02	3499.89	3499.94	23.29	40°07'38.501"N	104°42'21.642"W	0.98		
11077.00	90.550	359.520	7392.78	3584.89	3584.94	22.43	40°07'39.341"N	104°42'21.653"W	0.94		
11163.00	90.830	359.950	7391.74	3670.88	3670.93	22.03	40°07'40.191"N	104°42'21.658"W	0.60		
11246.00	89.720	358.530	7391.34	3753.87	3753.92	20.93	40°07'41.011"N	104°42'21.673"W	2.17		
11332.00	88.920	357.030	7392.36	3839.80	3839.85	17.60	40°07'41.860"N	104°42'21.715"W	1.98		
11417.00	88.830	356.850	7394.03	3924.68	3924.71	13.07	40°07'42.699"N	104°42'21.774"W	0.24		
11502.00	90.270	357.460	7394.70	4009.57	4009.60	8.85	40°07'43.538"N	104°42'21.828"W	1.84		
11585.00	90.270	357.400	7394.31	4092.50	4092.51	5.13	40°07'44.357"N	104°42'21.876"W	0.07		
11670.00	90.240	357.650	7393.93	4177.42	4177.43	1.45	40°07'45.196"N	104°42'21.923"W	0.30		
11756.00	90.150	357.650	7393.64	4263.36	4263.36	-2.07	40°07'46.045"N	104°42'21.969"W	0.10		
11841.00	90.890	358.810	7392.87	4348.31	4348.31	-4.70	40°07'46.885"N	104°42'22.002"W	1.62		
11926.00	90.800	359.020	7391.61	4433.29	4433.29	-6.31	40°07'47.725"N	104°42'22.023"W	0.27		
12011.00	91.380	359.130	7390.00	4518.27	4518.26	-7.68	40°07'48.564"N	104°42'22.041"W	0.69		
12096.00	91.600	359.050	7387.79	4603.23	4603.22	-9.03	40°07'49.404"N	104°42'22.058"W	0.28		
12181.00	91.910	359.480	7385.18	4688.19	4688.18	-10.12	40°07'50.243"N	104°42'22.072"W	0.62		
12266.00	91.660	358.690	7382.53	4773.14	4773.12	-11.47	40°07'51.083"N	104°42'22.090"W	0.97		
12352.00	92.250	359.690	7379.60	4859.08	4859.06	-12.69	40°07'51.932"N	104°42'22.105"W	1.35		
12437.00	91.260	0.190	7377.00	4944.04	4944.02	-12.78	40°07'52.772"N	104°42'22.107"W	1.30		
12523.00	91.170	359.880	7375.17	5030.02	5030.00	-12.73	40°07'53.621"N	104°42'22.106"W	0.38		
12608.00	91.630	0.220	7373.10	5114.99	5114.98	-12.65	40°07'54.461"N	104°42'22.105"W	0.67		
12692.00	91.790	0.300	7370.59	5198.95	5198.94	-12.27	40°07'55.291"N	104°42'22.100"W	0.21		
12778.00	92.120	0.880	7367.66	5284.90	5284.88	-11.39	40°07'56.140"N	104°42'22.089"W	0.78		
12812.00	92.770	0.680	7366.21	5318.86	5318.85	-10.92	40°07'56.476"N	104°42'22.083"W	2.00	LAST BHI MWD+IFR SURVEY	
12872.00	92.770	0.680	7363.31	5378.78	5378.77	-10.21	40°07'57.068"N	104°42'22.073"W	0.00	PROJECTION TO BIT	

HOLE & CASING SECTIONS - Ref Wellbore: RUSSIAN FIDDLER 36C-18HZ AWB Ref Wellpath: RUSSIAN FIDDLER 36C-18HZ AWP									
String/Diameter	Start MD [ft]	End MD [ft]	Interval [ft]	Start TVD [ft]	End TVD [ft]	Start N/S [ft]	Start E/W [ft]	End N/S [ft]	End E/W [ft]
13.5in Open Hole	16.00	993.00	977.00	16.00	992.94	0.00	0.00	6.85	6.09
9.625in Casing Surface	16.00	993.00	977.00	16.00	992.94	0.00	0.00	6.85	6.09
8.75in Open Hole	993.00	7790.00	6797.00	992.94	7382.56	6.85	6.09	298.93	51.16
7in Casing Intermediate	16.00	7780.00	7764.00	16.00	7382.22	0.00	0.00	288.94	51.28
6.125in Open Hole	7780.00	12872.00	5092.00	7382.22	7363.31	288.94	51.28	5378.77	-10.21



# Actual Wellpath Report

RUSSIAN FIDDLER 36C-18HZ AWP

Page 6 of 7



## REFERENCE WELLPATH IDENTIFICATION

Operator	KERR-MCGEE OIL & GAS ONSHORE LP	Slot	SLOT#06 RUSSIAN FIDDLER 36C-18HZ (395'FSL & 2458'FEL, SEC.19)
Area	COLORADO	Well	RUSSIAN FIDDLER 36C-18HZ
Field	WELD COUNTY (KERR MCGEE)	Wellbore	RUSSIAN FIDDLER 36C-18HZ AWB
Facility	SEC.19-T2N-R65W		

## TARGETS

Name	MD [ft]	TVD [ft]	North [ft]	East [ft]	Grid East [US ft]	Grid North [US ft]	Latitude	Longitude	Shape
RUSSIAN FIDDLER 5 PAD SECTION LINES (SEC.18)		-8.00	5345.76	-2214.29	3219766.37	1292061.22	40°07'56.741"N	104°42'50.450"W	polygon
RUSSIAN FIDDLER 5 PAD SECTION LINES (SEC.19)		-8.00	5345.78	-2214.29	3219766.37	1292061.24	40°07'56.741"N	104°42'50.450"W	polygon
RUSSIAN FIDDLER 36C-18HZ BHL ON PLAT REV-1 (460'FSL & 2329'FEL, SEC.18)		7378.00	5379.17	84.97	3222065.14	1292115.22	40°07'57.072"N	104°42'20.848"W	point
RUSSIAN FIDDLER 36C-18HZ BHL REV-2 (460'FSL & 2409'FEL, SEC.18)		7378.00	5379.17	5.00	3221985.17	1292114.50	40°07'57.072"N	104°42'21.878"W	point
RUSSIAN FIDDLER 36C-18HZ LAND BOX		7400.00	-0.04	0.00	3222028.33	1286735.69	40°07'03.914"N	104°42'21.942"W	polygon
RUSSIAN FIDDLER 5 PAD HARD LINES (460' SETBACKS, SEC.18)		7400.00	5345.78	-2214.29	3219766.37	1292061.24	40°07'56.741"N	104°42'50.450"W	polygon
RUSSIAN FIDDLER 5 PAD HARD LINES (460' SETBACKS, SEC.19)		7400.00	5345.78	-2214.29	3219766.37	1292061.24	40°07'56.741"N	104°42'50.450"W	polygon

## WELLPATH COMPOSITION - Ref Wellbore: RUSSIAN FIDDLER 36C-18HZ AWB Ref Wellpath: RUSSIAN FIDDLER 36C-18HZ AWP

Start MD [ft]	End MD [ft]	Positional Uncertainty Model	Log Name/Comment	Wellbore
16.00	911.00	Generic gyro - continuous (Standard)	MS ENERGY GYRO SURVEYS <116-911>	RUSSIAN FIDDLER 36C-18HZ AWB
911.00	7780.00	NaviTrak (MAGCORR,IFR)	BHI MWD SURVEYS 8 3/4" HOLE <1062-7780>	RUSSIAN FIDDLER 36C-18HZ AWB
7780.00	12812.00	OnTrak (MAGCORR,IFR)	BHI MWD SURVEYS 6 1/8" HOLE <7845-12812>	RUSSIAN FIDDLER 36C-18HZ AWB
12812.00	12872.00	Blind Drilling (std)	Projection to bit	RUSSIAN FIDDLER 36C-18HZ AWB



# Actual Wellpath Report

RUSSIAN FIDDLER 36C-18HZ AWP

Page 7 of 7



## REFERENCE WELLPATH IDENTIFICATION

Operator	KERR-MCGEE OIL & GAS ONSHORE LP	Slot	SLOT#06 RUSSIAN FIDDLER 36C-18HZ (395'FSL & 2458'FEL, SEC.19)
Area	COLORADO	Well	RUSSIAN FIDDLER 36C-18HZ
Field	WELD COUNTY (KERR MCGEE)	Wellbore	RUSSIAN FIDDLER 36C-18HZ AWB
Facility	SEC.19-T2N-R65W		

## WELLPATH COMMENTS

MD [ft]	Inclination [°]	Azimuth [°]	TVD [ft]	Comment
16.00	0.000	17.890	16.00	TIE-ON
116.00	0.870	17.890	116.00	BEGIN GYRO SURVEYS
911.00	0.170	44.940	910.94	TIE-INTO GYRO SURVEYS
1062.00	0.250	138.490	1061.94	BEGIN BHI MWD SURVEYS
7780.00	88.020	359.330	7382.22	7" CASING POINT
12812.00	92.770	0.680	7366.21	LAST BHI MWD+IFR SURVEY
12872.00	92.770	0.680	7363.31	PROJECTION TO BIT