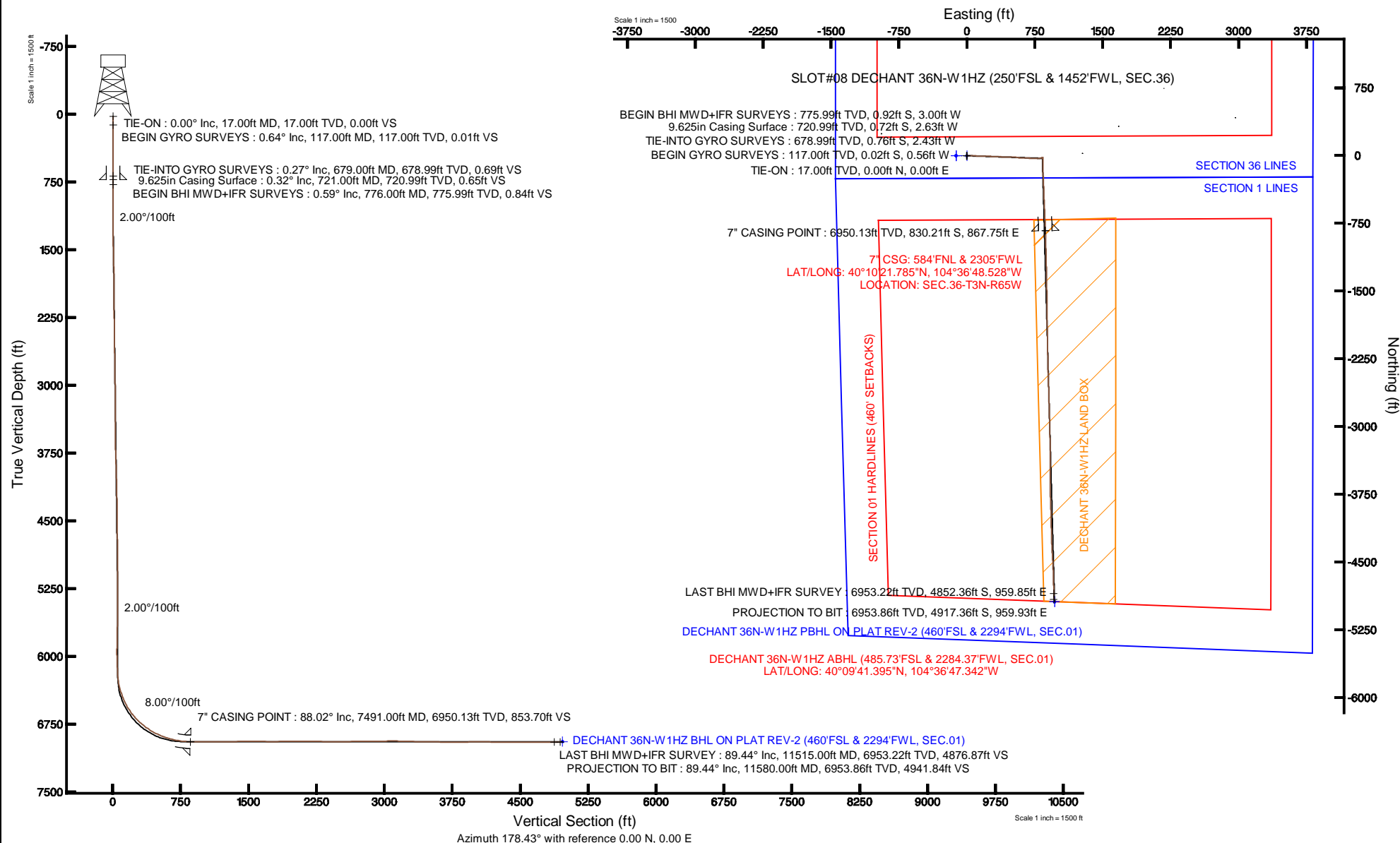


KERR-MCGEE OIL & GAS ONSHORE LP

Location: COLORADO Slot: SLOT#08 DECHANT 36N-W1HZ (250'FSL & 1452'FWL, SEC.36)
Field: WELD COUNTY (KERR MCGEE) Well: DECHANT 36N-W1HZ
Facility: SEC.36-T3N-R65W Wellbore: DECHANT 36N-W1HZ PWB

Plot reference wellpath is DECHANT 36N-W1HZ (REV-B.0) PWP

True vertical depths are referenced to XTREME 8 (RKB)	Grid System: NAD83 / Lambert Colorado SP, Northern Zone (501), US feet
Measured depths are referenced to XTREME 8 (RKB)	North Reference: True north
XTREME 8 (RKB) to Mean Sea Level: 4846 feet	Scale: True distance
Mean Sea Level to Mud line (At Slot: SLOT#08 DECHANT 36N-W1HZ (250'FSL & 1452'FWL, SEC.36)): 0 feet	Depths are in feet
Coordinates are in feet referenced to Slot	Created by: wilsje02 on 4/3/2013





Actual Wellpath Report

DECHANT 36N-W1HZ AWP

Page 1 of 6



REFERENCE WELLPATH IDENTIFICATION

Operator	KERR-MCGEE OIL & GAS ONSHORE LP	Slot	SLOT#08 DECHANT 36N-W1HZ (250'FSL & 1452'FWL, SEC.36)
Area	COLORADO	Well	DECHANT 36N-W1HZ
Field	WELD COUNTY (KERR MCGEE)	Wellbore	DECHANT 36N-W1HZ AWB
Facility	SEC.36-T3N-R65W		

REPORT SETUP INFORMATION

Projection System	NAD83 / Lambert Colorado SP, Northern Zone (501), US feet	Software System	WellArchitect® 3.0.2
North Reference	True	User	Wilsjef02
Scale	0.999958	Report Generated	4/3/2013 at 11:28:45
Convergence at slot	0.57° East	Database/Source file	WellArchitectDB/DECHANT_36N-W1HZ_AWB.xml

WELLPATH LOCATION

	Local coordinates		Grid coordinates		Geographic coordinates	
	North[ft]	East[ft]	Easting[US ft]	Northing[US ft]	Latitude	Longitude
Slot Location	-2849.87	-1658.52	3246852.72	1307823.92	40°10'29.989"N	104°36'59.706"W
Facility Reference Pt			3248482.50	1310690.15	40°10'58.152"N	104°36'38.340"W
Field Reference Pt			3197771.84	1268891.29	40°04'09.600"N	104°47'36.000"W

WELLPATH DATUM

Calculation method	Minimum curvature	XTREME 8 (RKB) to Facility Vertical Datum	4846.00ft
Horizontal Reference Pt	Slot	XTREME 8 (RKB) to Mean Sea Level	4846.00ft
Vertical Reference Pt	XTREME 8 (RKB)	XTREME 8 (RKB) to Mud Line at Slot (SLOT#08 DECHANT 36N-W1HZ (250'FSL & 1452'FWL, SEC.36))	4846.00ft
MD Reference Pt	XTREME 8 (RKB)	Section Origin	N 0.00, E 0.00 ft
Field Vertical Reference	Mean Sea Level	Section Azimuth	168.95°



Actual Wellpath Report

DECHANT 36N-W1HZ AWP

Page 2 of 6



REFERENCE WELLPATH IDENTIFICATION

Operator	KERR-MCGEE OIL & GAS ONSHORE LP	Slot	SLOT#08 DECHANT 36N-W1HZ (250'FSL & 1452'FWL, SEC.36)
Area	COLORADO	Well	DECHANT 36N-W1HZ
Field	WELD COUNTY (KERR MCGEE)	Wellbore	DECHANT 36N-W1HZ AWB
Facility	SEC.36-T3N-R65W		

WELLPATH DATA (136 stations) † = interpolated/extrapolated station

MD [ft]	Inclination [°]	Azimuth [°]	TVD [ft]	Vert Sect [ft]	North [ft]	East [ft]	Latitude	Longitude	DLS [°/100ft]	Comments
0.00†	0.000	267.570	0.00	0.00	0.00	0.00	40°10'29.989"N	104°36'59.706"W	0.00	
17.00	0.000	267.570	17.00	0.00	0.00	0.00	40°10'29.989"N	104°36'59.706"W	0.00	TIE-ON
117.00	0.640	267.570	117.00	-0.08	-0.02	-0.56	40°10'29.989"N	104°36'59.713"W	0.64	BEGIN GYRO SURVEYS
217.00	0.340	239.140	216.99	-0.07	-0.20	-1.37	40°10'29.987"N	104°36'59.724"W	0.38	
317.00	0.230	212.710	316.99	0.18	-0.52	-1.73	40°10'29.984"N	104°36'59.728"W	0.17	
417.00	0.180	287.480	416.99	0.25	-0.64	-1.99	40°10'29.983"N	104°36'59.732"W	0.25	
517.00	0.260	211.490	516.99	0.34	-0.79	-2.26	40°10'29.981"N	104°36'59.735"W	0.28	
617.00	0.100	24.570	616.99	0.44	-0.90	-2.34	40°10'29.980"N	104°36'59.736"W	0.36	
679.00	0.270	309.940	678.99	0.28	-0.76	-2.43	40°10'29.981"N	104°36'59.737"W	0.42	TIE-INTO GYRO SURVEYS
776.00	0.590	232.170	775.99	0.33	-0.92	-3.00	40°10'29.980"N	104°36'59.745"W	0.61	BEGIN BHI MWD+IFR SURVEYS
867.00	1.640	77.030	866.98	0.49	-0.91	-2.10	40°10'29.980"N	104°36'59.733"W	2.41	
958.00	3.950	82.760	957.86	0.66	-0.23	2.28	40°10'29.987"N	104°36'59.677"W	2.55	
1048.00	5.060	81.950	1047.59	1.07	0.72	9.28	40°10'29.996"N	104°36'59.586"W	1.24	
1139.00	6.640	90.220	1138.11	2.31	1.26	18.52	40°10'30.001"N	104°36'59.467"W	1.96	
1229.00	8.800	89.550	1227.29	4.59	1.30	30.61	40°10'30.002"N	104°36'59.312"W	2.40	
1320.00	10.240	91.020	1317.03	7.56	1.21	45.65	40°10'30.001"N	104°36'59.118"W	1.60	
1411.00	12.340	92.120	1406.27	11.47	0.70	63.46	40°10'29.996"N	104°36'58.888"W	2.32	
1503.00	13.330	93.560	1495.97	16.38	-0.32	83.87	40°10'29.986"N	104°36'58.626"W	1.13	
1594.00	13.570	94.700	1584.47	21.93	-1.85	104.98	40°10'29.971"N	104°36'58.354"W	0.39	
1685.00	12.970	93.390	1673.04	27.37	-3.32	125.82	40°10'29.956"N	104°36'58.085"W	0.74	
1777.00	12.360	92.070	1762.80	32.18	-4.29	145.96	40°10'29.947"N	104°36'57.826"W	0.73	
1868.00	11.260	89.650	1851.88	36.04	-4.59	164.58	40°10'29.944"N	104°36'57.586"W	1.33	
1984.00	10.610	82.600	1965.78	38.82	-3.14	186.50	40°10'29.958"N	104°36'57.303"W	1.28	
2069.00	10.630	94.840	2049.33	41.46	-2.80	202.07	40°10'29.961"N	104°36'57.103"W	2.65	
2154.00	9.990	95.150	2132.96	45.66	-4.12	217.23	40°10'29.948"N	104°36'56.908"W	0.76	
2240.00	9.640	91.780	2217.70	49.34	-5.01	231.85	40°10'29.939"N	104°36'56.719"W	0.78	
2325.00	10.640	94.130	2301.37	52.98	-5.80	246.79	40°10'29.932"N	104°36'56.527"W	1.27	
2410.00	11.710	93.330	2384.76	57.17	-6.87	263.23	40°10'29.921"N	104°36'56.315"W	1.27	
2495.00	10.540	91.630	2468.16	61.02	-7.59	279.61	40°10'29.914"N	104°36'56.104"W	1.43	
2581.00	9.440	89.100	2552.85	63.99	-7.70	294.53	40°10'29.913"N	104°36'55.912"W	1.38	
2666.00	9.910	95.480	2636.65	67.30	-8.29	308.78	40°10'29.907"N	104°36'55.728"W	1.38	
2751.00	11.170	94.560	2720.21	71.59	-9.64	324.27	40°10'29.894"N	104°36'55.529"W	1.50	
2836.00	10.850	92.040	2803.65	75.62	-10.58	340.47	40°10'29.884"N	104°36'55.320"W	0.68	
2922.00	10.310	91.660	2888.19	79.14	-11.09	356.25	40°10'29.879"N	104°36'55.117"W	0.63	
3007.00	11.590	91.680	2971.64	82.70	-11.56	372.39	40°10'29.875"N	104°36'54.909"W	1.51	
3092.00	10.880	92.510	3055.01	86.46	-12.17	388.94	40°10'29.869"N	104°36'54.695"W	0.86	
3177.00	9.870	92.430	3138.62	90.04	-12.83	404.23	40°10'29.862"N	104°36'54.498"W	1.19	
3263.00	11.600	90.630	3223.11	93.51	-13.23	420.24	40°10'29.858"N	104°36'54.292"W	2.05	
3348.00	10.760	89.970	3306.49	96.75	-13.32	436.72	40°10'29.857"N	104°36'54.080"W	1.00	
3433.00	9.260	86.970	3390.20	99.22	-12.96	451.49	40°10'29.861"N	104°36'53.890"W	1.87	
3518.00	9.920	90.520	3474.01	101.64	-12.66	465.64	40°10'29.864"N	104°36'53.707"W	1.04	
3604.00	11.390	91.570	3558.53	104.98	-12.96	481.54	40°10'29.861"N	104°36'53.503"W	1.72	
3689.00	10.340	87.800	3642.00	107.99	-12.90	497.55	40°10'29.861"N	104°36'53.296"W	1.49	
3774.00	11.220	91.440	3725.50	110.95	-12.82	513.44	40°10'29.862"N	104°36'53.092"W	1.31	
3859.00	11.350	99.560	3808.86	115.68	-14.41	529.96	40°10'29.847"N	104°36'52.879"W	1.87	

REFERENCE WELLPATH IDENTIFICATION

Operator	KERR-MCGEE OIL & GAS ONSHORE LP	Slot	SLOT#08 DECHANT 36N-W1HZ (250'FSL & 1452'FWL, SEC.36)
Area	COLORADO	Well	DECHANT 36N-W1HZ
Field	WELD COUNTY (KERR MCGEE)	Wellbore	DECHANT 36N-W1HZ AWB
Facility	SEC.36-T3N-R65W		

WELLPATH DATA (136 stations)

MD [ft]	Inclination [°]	Azimuth [°]	TVD [ft]	Vert Sect [ft]	North [ft]	East [ft]	Latitude	Longitude	DLS [°/100ft]	Comments
3945.00	10.980	100.040	3893.24	121.61	-17.25	546.37	40°10'29.819"N	104°36'52.667"W	0.44	
4030.00	10.740	98.700	3976.71	127.20	-19.85	562.17	40°10'29.793"N	104°36'52.464"W	0.41	
4115.00	10.000	98.900	4060.33	132.39	-22.19	577.29	40°10'29.770"N	104°36'52.269"W	0.87	
4200.00	10.940	93.780	4143.91	136.97	-23.87	592.63	40°10'29.753"N	104°36'52.071"W	1.55	
4286.00	10.470	93.550	4228.41	141.03	-24.89	608.57	40°10'29.743"N	104°36'51.866"W	0.55	
4371.00	11.720	91.740	4311.82	144.89	-25.63	624.91	40°10'29.736"N	104°36'51.656"W	1.53	
4456.00	11.150	90.620	4395.14	148.46	-25.98	641.75	40°10'29.732"N	104°36'51.439"W	0.72	
4541.00	10.850	90.050	4478.57	151.66	-26.08	657.97	40°10'29.731"N	104°36'51.230"W	0.38	
4627.00	10.040	90.360	4563.15	154.70	-26.13	673.56	40°10'29.731"N	104°36'51.029"W	0.94	
4712.00	12.070	94.160	4646.57	158.50	-26.82	689.84	40°10'29.724"N	104°36'50.819"W	2.54	
4797.00	11.410	92.160	4729.79	162.75	-27.78	707.10	40°10'29.714"N	104°36'50.597"W	0.91	
4883.00	10.210	90.770	4814.26	166.25	-28.21	723.23	40°10'29.710"N	104°36'50.389"W	1.43	
4968.00	9.070	87.910	4898.06	168.84	-28.06	737.45	40°10'29.712"N	104°36'50.206"W	1.45	
5053.00	8.110	84.990	4982.11	170.51	-27.30	750.12	40°10'29.719"N	104°36'50.042"W	1.24	
5138.00	9.310	91.700	5066.13	172.66	-26.98	762.97	40°10'29.722"N	104°36'49.877"W	1.85	
5224.00	8.700	89.100	5151.07	175.34	-27.08	776.43	40°10'29.721"N	104°36'49.704"W	0.85	
5309.00	7.550	90.300	5235.21	177.57	-27.01	788.44	40°10'29.722"N	104°36'49.549"W	1.37	
5394.00	6.460	90.190	5319.58	179.60	-27.05	798.80	40°10'29.722"N	104°36'49.415"W	1.28	
5479.00	5.570	87.640	5404.11	181.16	-26.90	807.71	40°10'29.723"N	104°36'49.301"W	1.09	
5564.00	4.730	82.720	5488.77	182.01	-26.29	815.31	40°10'29.729"N	104°36'49.203"W	1.12	
5650.00	3.900	82.880	5574.52	182.44	-25.47	821.72	40°10'29.737"N	104°36'49.120"W	0.97	
5735.00	3.240	73.580	5659.36	182.41	-24.44	826.90	40°10'29.747"N	104°36'49.053"W	1.03	
5820.00	2.450	62.360	5744.25	181.67	-22.92	830.81	40°10'29.762"N	104°36'49.003"W	1.13	
5906.00	2.400	55.960	5830.17	180.44	-21.05	833.93	40°10'29.781"N	104°36'48.963"W	0.32	
5991.00	2.250	48.660	5915.10	178.91	-18.96	836.66	40°10'29.802"N	104°36'48.928"W	0.39	
6076.00	2.030	137.100	6000.06	179.34	-18.96	838.94	40°10'29.802"N	104°36'48.898"W	3.52	
6161.00	2.790	161.010	6084.99	182.67	-22.02	840.64	40°10'29.771"N	104°36'48.876"W	1.46	
6247.00	2.220	157.080	6170.91	186.37	-25.53	841.96	40°10'29.737"N	104°36'48.859"W	0.69	
6289.00	2.800	170.920	6212.87	188.19	-27.29	842.44	40°10'29.719"N	104°36'48.853"W	1.99	
6332.00	6.380	183.070	6255.72	191.56	-30.72	842.48	40°10'29.685"N	104°36'48.853"W	8.58	
6374.00	9.900	185.940	6297.29	197.28	-36.64	841.98	40°10'29.627"N	104°36'48.859"W	8.43	
6417.00	14.020	186.160	6339.35	205.79	-45.50	841.04	40°10'29.539"N	104°36'48.871"W	9.58	
6460.00	17.970	183.040	6380.68	217.21	-57.31	840.13	40°10'29.423"N	104°36'48.883"W	9.40	
6502.00	20.220	181.660	6420.37	230.58	-71.03	839.58	40°10'29.287"N	104°36'48.890"W	5.46	
6545.00	21.310	180.500	6460.57	245.48	-86.27	839.29	40°10'29.136"N	104°36'48.894"W	2.71	
6587.00	23.770	181.160	6499.36	261.23	-102.37	839.05	40°10'28.977"N	104°36'48.897"W	5.89	
6630.00	26.900	179.710	6538.22	279.26	-120.77	838.93	40°10'28.795"N	104°36'48.898"W	7.42	
6673.00	30.790	177.000	6575.88	299.73	-141.49	839.55	40°10'28.591"N	104°36'48.890"W	9.54	
6715.00	34.260	176.590	6611.29	322.09	-164.04	840.82	40°10'28.368"N	104°36'48.874"W	8.28	
6758.00	37.810	176.440	6646.05	347.17	-189.28	842.36	40°10'28.118"N	104°36'48.854"W	8.26	
6800.00	41.360	177.810	6678.42	373.65	-216.01	843.69	40°10'27.854"N	104°36'48.837"W	8.70	
6843.00	45.070	177.830	6709.75	402.74	-245.42	844.81	40°10'27.564"N	104°36'48.823"W	8.63	
6885.00	48.370	178.150	6738.54	432.93	-275.98	845.88	40°10'27.262"N	104°36'48.809"W	7.88	
6928.00	51.770	176.480	6766.14	465.55	-308.91	847.43	40°10'26.936"N	104°36'48.789"W	8.45	
6971.00	54.280	177.340	6792.00	499.57	-343.21	849.28	40°10'26.597"N	104°36'48.765"W	6.05	

REFERENCE WELLPATH IDENTIFICATION

Operator	KERR-MCGEE OIL & GAS ONSHORE LP	Slot	SLOT#08 DECHANT 36N-W1HZ (250'FSL & 1452'FWL, SEC.36)
Area	COLORADO	Well	DECHANT 36N-W1HZ
Field	WELD COUNTY (KERR MCGEE)	Wellbore	DECHANT 36N-W1HZ AWB
Facility	SEC.36-T3N-R65W		

WELLPATH DATA (136 stations) † = interpolated/extrapolated station

MD [ft]	Inclination [°]	Azimuth [°]	TVD [ft]	Vert Sect [ft]	North [ft]	East [ft]	Latitude	Longitude	DLS [°/100ft]	Comments
7013.00	56.730	178.120	6815.78	533.77	-377.79	850.65	40°10'26.256"N	104°36'48.748"W	6.03	
7056.00	60.250	178.480	6838.25	569.94	-414.43	851.73	40°10'25.893"N	104°36'48.734"W	8.22	
7099.00	63.490	178.470	6858.52	607.33	-452.33	852.74	40°10'25.519"N	104°36'48.721"W	7.53	
7142.00	66.670	177.980	6876.64	645.82	-491.30	853.95	40°10'25.134"N	104°36'48.705"W	7.47	
7184.00	69.450	176.960	6892.33	684.34	-530.22	855.68	40°10'24.749"N	104°36'48.683"W	6.99	
7227.00	72.360	176.630	6906.40	724.59	-570.79	857.95	40°10'24.348"N	104°36'48.654"W	6.81	
7269.00	75.850	177.370	6917.90	764.58	-611.12	860.06	40°10'23.950"N	104°36'48.626"W	8.48	
7312.00	78.260	177.680	6927.53	806.02	-652.98	861.87	40°10'23.536"N	104°36'48.603"W	5.65	
7355.00	79.970	178.160	6935.65	847.72	-695.18	863.40	40°10'23.119"N	104°36'48.583"W	4.13	
7397.00	81.990	177.660	6942.23	888.70	-736.63	864.91	40°10'22.709"N	104°36'48.564"W	4.95	
7440.00	85.100	178.470	6947.07	930.88	-779.33	866.36	40°10'22.288"N	104°36'48.545"W	7.47	
7491.00†	88.024	178.394	6950.13	981.09	-830.21	867.75	40°10'21.785"N	104°36'48.528"W	5.73	7" CASING POINT
7541.00	90.890	178.320	6950.60	1030.41	-880.18	869.18	40°10'21.291"N	104°36'48.509"W	5.73	
7659.00	90.270	178.120	6949.41	1146.86	-998.12	872.85	40°10'20.125"N	104°36'48.462"W	0.55	
7745.00	90.310	178.490	6948.97	1231.72	-1084.08	875.39	40°10'19.276"N	104°36'48.429"W	0.43	
7830.00	89.780	178.630	6948.90	1315.53	-1169.05	877.53	40°10'18.436"N	104°36'48.402"W	0.64	
7915.00	90.590	178.670	6948.63	1399.31	-1254.03	879.53	40°10'17.597"N	104°36'48.376"W	0.95	
8000.00	91.070	178.840	6947.40	1483.06	-1339.00	881.38	40°10'16.757"N	104°36'48.352"W	0.60	
8171.00	89.750	179.180	6946.17	1651.43	-1509.97	884.33	40°10'15.067"N	104°36'48.314"W	0.80	
8342.00	89.440	179.430	6947.38	1819.64	-1680.95	886.41	40°10'13.378"N	104°36'48.288"W	0.23	
8512.00	91.360	179.150	6946.20	1986.87	-1850.92	888.51	40°10'11.698"N	104°36'48.261"W	1.14	
8597.00	89.930	179.340	6945.24	2070.49	-1935.91	889.63	40°10'10.858"N	104°36'48.246"W	1.70	
8768.00	90.090	179.340	6945.21	2238.69	-2106.90	891.60	40°10'09.168"N	104°36'48.221"W	0.09	
8853.00	89.220	178.200	6945.72	2322.44	-2191.87	893.43	40°10'08.329"N	104°36'48.197"W	1.69	
9024.00	88.830	178.840	6948.63	2491.04	-2362.79	897.84	40°10'06.640"N	104°36'48.141"W	0.44	
9195.00	91.170	178.000	6948.63	2659.70	-2533.71	902.56	40°10'04.951"N	104°36'48.080"W	1.45	
9365.00	90.890	178.400	6945.58	2827.46	-2703.60	907.90	40°10'03.272"N	104°36'48.011"W	0.29	
9536.00	90.650	178.330	6943.28	2996.14	-2874.51	912.77	40°10'01.583"N	104°36'47.948"W	0.15	
9707.00	90.310	178.590	6941.85	3164.79	-3045.45	917.37	40°09'59.894"N	104°36'47.889"W	0.25	
9878.00	87.930	180.190	6944.47	3332.92	-3216.40	919.19	40°09'58.204"N	104°36'47.866"W	1.68	
10048.00	89.170	179.560	6948.77	3499.79	-3386.34	919.56	40°09'56.525"N	104°36'47.861"W	0.82	
10219.00	88.950	180.500	6951.58	3667.58	-3557.31	919.47	40°09'54.835"N	104°36'47.863"W	0.56	
10304.00	88.800	179.030	6953.25	3751.05	-3642.30	919.82	40°09'53.996"N	104°36'47.858"W	1.74	
10389.00	89.630	178.050	6954.41	3834.85	-3727.26	921.99	40°09'53.156"N	104°36'47.830"W	1.51	
10560.00	91.820	177.820	6952.25	4003.73	-3898.12	928.15	40°09'51.467"N	104°36'47.751"W	1.29	
10645.00	91.080	178.880	6950.10	4087.57	-3983.06	930.59	40°09'50.628"N	104°36'47.719"W	1.52	
10731.00	88.850	178.730	6950.15	4172.29	-4069.03	932.39	40°09'49.779"N	104°36'47.696"W	2.60	
10816.00	87.850	178.580	6952.60	4256.04	-4153.97	934.38	40°09'48.939"N	104°36'47.671"W	1.19	
10902.00	88.910	178.300	6955.03	4340.83	-4239.91	936.72	40°09'48.090"N	104°36'47.641"W	1.27	
10987.00	89.530	177.240	6956.19	4424.82	-4324.83	940.03	40°09'47.251"N	104°36'47.598"W	1.44	
11072.00	90.400	176.830	6956.24	4508.97	-4409.72	944.42	40°09'46.412"N	104°36'47.542"W	1.13	
11158.00	90.830	176.730	6955.31	4594.17	-4495.58	949.25	40°09'45.563"N	104°36'47.479"W	0.51	
11243.00	91.020	177.740	6953.94	4678.27	-4580.47	953.35	40°09'44.725"N	104°36'47.427"W	1.21	
11414.00	89.870	178.710	6952.61	4847.02	-4751.37	958.65	40°09'43.036"N	104°36'47.358"W	0.88	
11515.00	89.440	179.930	6953.22	4946.37	-4852.36	959.85	40°09'42.038"N	104°36'47.343"W	1.28	LAST BHI MWD+IFR SURVEY



Actual Wellpath Report

DECHANT 36N-W1HZ AWP

Page 5 of 6



REFERENCE WELLPATH IDENTIFICATION

Operator	KERR-MCGEE OIL & GAS ONSHORE LP	Slot	SLOT#08 DECHANT 36N-W1HZ (250'FSL & 1452'FWL, SEC.36)
Area	COLORADO	Well	DECHANT 36N-W1HZ
Field	WELD COUNTY (KERR MCGEE)	Wellbore	DECHANT 36N-W1HZ AWB
Facility	SEC.36-T3N-R65W		

WELLPATH DATA (136 stations)

MD [ft]	Inclination [°]	Azimuth [°]	TVD [ft]	Vert Sect [ft]	North [ft]	East [ft]	Latitude	Longitude	DLS [°/100ft]	Comments
11580.00	89.440	179.930	6953.86	5010.18	-4917.36	959.93	40°09'41.395"N	104°36'47.342"W	0.00	PROJECTION TO BIT

HOLE & CASING SECTIONS - Ref Wellbore: DECHANT 36N-W1HZ AWB Ref Wellpath: DECHANT 36N-W1HZ AWP

String/Diameter	Start MD [ft]	End MD [ft]	Interval [ft]	Start TVD [ft]	End TVD [ft]	Start N/S [ft]	Start E/W [ft]	End N/S [ft]	End E/W [ft]
13.5in Open Hole	17.00	721.00	704.00	17.00	720.99	0.00	0.00	-0.72	-2.63
9.625in Casing Surface	17.00	721.00	704.00	17.00	720.99	0.00	0.00	-0.72	-2.63
8.75in Open Hole	721.00	7500.00	6779.00	720.99	6950.40	-0.72	-2.63	-839.20	868.00
7in Casing Intermediate	17.00	7491.00	7474.00	17.00	6950.13	0.00	0.00	-830.21	867.75
6.125in Open Hole	7491.00	11580.00	4089.00	6950.13	6953.86	-830.21	867.75	-4917.36	959.93

TARGETS

Name	MD [ft]	TVD [ft]	North [ft]	East [ft]	Grid East [US ft]	Grid North [US ft]	Latitude	Longitude	Shape
SECTION 1 LINES		2.00	-0.30	-120.16	3246732.57	1307822.42	40°10'29.986"N	104°37'01.254"W	polygon
SECTION 36 LINES		2.00	-0.30	-120.16	3246732.57	1307822.42	40°10'29.986"N	104°37'01.254"W	polygon
DECHANT 36N-W1HZ LAND BOX		6919.00	0.00	0.00	3246852.72	1307823.92	40°10'29.989"N	104°36'59.706"W	polygon
DECHANT 36N-W1HZ BHL ON PLAT REV-1 (460'FSL & 2294'FWL, SEC.01)		6921.00	-4943.09	969.56	3247871.44	1302890.95	40°09'41.141"N	104°36'47.218"W	point
DECHANT 36N-W1HZ BHL ON PLAT REV-2 (460'FSL & 2294'FWL, SEC.01)		6948.00	-4943.09	969.56	3247871.43	1302890.95	40°09'41.141"N	104°36'47.218"W	point
SECTION 01 HARDLINES (460' SETBACKS)		7002.00	-0.30	-120.16	3246732.57	1307822.42	40°10'29.986"N	104°37'01.254"W	polygon
SECTION 36 HARDLINES (460' SETBACKS)		7002.00	-0.30	-120.16	3246732.57	1307822.42	40°10'29.986"N	104°37'01.254"W	polygon

WELLPATH COMPOSITION - Ref Wellbore: DECHANT 36N-W1HZ AWB Ref Wellpath: DECHANT 36N-W1HZ AWP

Start MD [ft]	End MD [ft]	Positional Uncertainty Model	Log Name/Comment	Wellbore
17.00	679.00	Generic gyro - hybrid (Standard)	GYRO DATA SURVEYS <117-679>	DECHANT 36N-W1HZ AWB
679.00	7440.00	NaviTrak (MAGCORR,IFR)	BHI MWD+IFR SURVEYS 8 3/4" HOLE <776-7440>	DECHANT 36N-W1HZ AWB
7440.00	11515.00	OnTrak (MAGCORR,IFR)	BHI MWD+IFR SURVEYS 6 1/8" HOLE <7541-11515>	DECHANT 36N-W1HZ AWB
11515.00	11580.00	Blind Drilling (std)	Projection to bit	DECHANT 36N-W1HZ AWB



Actual Wellpath Report

DECHANT 36N-W1HZ AWP

Page 6 of 6



REFERENCE WELLPATH IDENTIFICATION

Operator	KERR-MCGEE OIL & GAS ONSHORE LP	Slot	SLOT#08 DECHANT 36N-W1HZ (250'FSL & 1452'FWL, SEC.36)
Area	COLORADO	Well	DECHANT 36N-W1HZ
Field	WELD COUNTY (KERR MCGEE)	Wellbore	DECHANT 36N-W1HZ AWB
Facility	SEC.36-T3N-R65W		

WELLPATH COMMENTS

MD [ft]	Inclination [°]	Azimuth [°]	TVD [ft]	Comment
17.00	0.000	267.570	17.00	TIE-ON
117.00	0.640	267.570	117.00	BEGIN GYRO SURVEYS
679.00	0.270	309.940	678.99	TIE-INTO GYRO SURVEYS
776.00	0.590	232.170	775.99	BEGIN BHI MWD+IFR SURVEYS
7491.00	88.024	178.394	6950.13	7" CASING POINT
11515.00	89.440	179.930	6953.22	LAST BHI MWD+IFR SURVEY
11580.00	89.440	179.930	6953.86	PROJECTION TO BIT