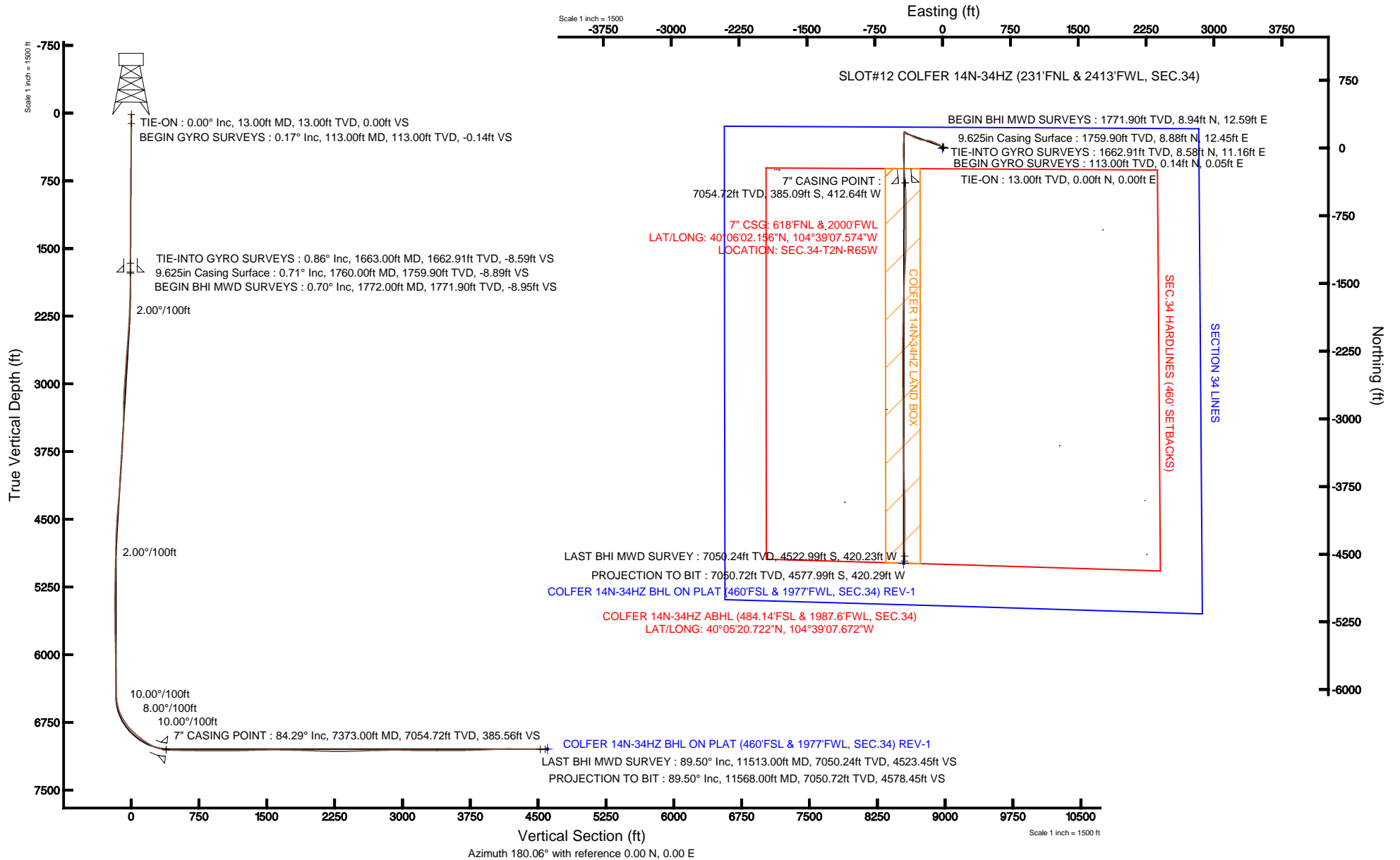


KERR-MCGEE OIL & GAS ONSHORE LP

Location: COLORADO Slot: SLOT#12 COLFER 14N-34HZ (231'FNL & 2413'FWL, SEC.34)
 Field: WELD COUNTY (KERR MCGEE) Well: COLFER 14N-34HZ
 Facility: SEC.34-T2N-R65W Wellbore: COLFER 14N-34HZ PWB

Plot reference wellpath is COLFER 14N-34HZ (REV-C.0) PWP

True vertical depths are referenced to ENSIGN 145 (RKB)	Grid System: NAD83 / Lambert Colorado SP, Northern Zone (501), US feet
Measured depths are referenced to ENSIGN 145 (RKB)	North Reference: True north
ENSIGN 145 (RKB) to Mean Sea Level: 4977 feet	Scale: True distance
Mean Sea Level to Mud line (At Slot: SLOT#12 COLFER 14N-34HZ (231'FNL & 2413'FWL, SEC.34)): 0 feet	Depths are in feet
Coordinates are in feet referenced to Slot	Created by: wilsje02 on 4/11/2013





Actual Wellpath Report

COLFER 14N-34HZ AWP

Page 1 of 6



REFERENCE WELLPATH IDENTIFICATION

Operator	KERR-MCGEE OIL & GAS ONSHORE LP	Slot	SLOT#12 COLFER 14N-34HZ (231'FNL & 2413'FWL, SEC.34)
Area	COLORADO	Well	COLFER 14N-34HZ
Field	WELD COUNTY (KERR MCGEE)	Wellbore	COLFER 14N-34HZ AWB
Facility	SEC.34-T2N-R65W		

REPORT SETUP INFORMATION

Projection System	NAD83 / Lambert Colorado SP, Northern Zone (501), US feet	Software System	WellArchitect@ 3.0.2
North Reference	True	User	Wilsjef02
Scale	0.99996	Report Generated	4/11/2013 at 13:30:54
Convergence at slot	0.55° East	Database/Source file	WellArchitectDB/COLFER_14N-34HZ_AWB.xml

WELLPATH LOCATION

	Local coordinates		Grid coordinates		Geographic coordinates	
	North[ft]	East[ft]	Easting[US ft]	Northing[US ft]	Latitude	Longitude
Slot Location	240.30	1808.65	3237596.03	1281015.61	40°06'05.962"N	104°39'02.264"W
Facility Reference Pt			3235789.83	1280758.14	40°06'03.588"N	104°39'25.539"W
Field Reference Pt			3197771.84	1268891.29	40°04'09.600"N	104°47'36.000"W

WELLPATH DATUM

Calculation method	Minimum curvature	ENSIGN 145 (RKB) to Facility Vertical Datum	4977.00ft
Horizontal Reference Pt	Slot	ENSIGN 145 (RKB) to Mean Sea Level	4977.00ft
Vertical Reference Pt	ENSIGN 145 (RKB)	ENSIGN 145 (RKB) to Mud Line at Slot (SLOT#12 COLFER 14N-34HZ (231'FNL & 2413'FWL, SEC.34))	4977.00ft
MD Reference Pt	ENSIGN 145 (RKB)	Section Origin	N 0.00, E 0.00 ft
Field Vertical Reference	Mean Sea Level	Section Azimuth	185.25°



Actual Wellpath Report

COLFER 14N-34HZ AWP

Page 2 of 6



REFERENCE WELLPATH IDENTIFICATION

Operator	KERR-MCGEE OIL & GAS ONSHORE LP	Slot	SLOT#12 COLFER 14N-34HZ (231'FNL & 2413'FWL, SEC.34)
Area	COLORADO	Well	COLFER 14N-34HZ
Field	WELD COUNTY (KERR MCGEE)	Wellbore	COLFER 14N-34HZ AWB
Facility	SEC.34-T2N-R65W		

WELLPATH DATA (141 stations) † = interpolated/extrapolated station

MD [ft]	Inclination [°]	Azimuth [°]	TVD [ft]	Vert Sect [ft]	North [ft]	East [ft]	Latitude	Longitude	DLS [°/100ft]	Comments
0.00†	0.000	18.970	0.00	0.00	0.00	0.00	40°06'05.962"N	104°39'02.264"W	0.00	
13.00	0.000	18.970	13.00	0.00	0.00	0.00	40°06'05.962"N	104°39'02.264"W	0.00	TIE-ON
113.00	0.170	18.970	113.00	-0.14	0.14	0.05	40°06'05.963"N	104°39'02.263"W	0.17	BEGIN GYRO SURVEYS
213.00	0.240	330.740	213.00	-0.46	0.46	-0.01	40°06'05.967"N	104°39'02.264"W	0.18	
313.00	0.220	359.900	313.00	-0.82	0.84	-0.11	40°06'05.970"N	104°39'02.265"W	0.12	
413.00	0.370	9.220	413.00	-1.34	1.35	-0.06	40°06'05.975"N	104°39'02.265"W	0.16	
513.00	0.540	19.880	512.99	-2.12	2.11	0.15	40°06'05.983"N	104°39'02.262"W	0.19	
613.00	0.620	12.510	612.99	-3.11	3.08	0.43	40°06'05.992"N	104°39'02.258"W	0.11	
713.00	0.480	31.220	712.98	-4.02	3.97	0.77	40°06'06.001"N	104°39'02.254"W	0.23	
813.00	0.490	29.040	812.98	-4.79	4.70	1.19	40°06'06.008"N	104°39'02.249"W	0.02	
913.00	0.550	45.860	912.98	-5.55	5.41	1.74	40°06'06.015"N	104°39'02.242"W	0.16	
1013.00	0.580	67.280	1012.97	-6.15	5.94	2.55	40°06'06.021"N	104°39'02.231"W	0.21	
1113.00	0.640	66.760	1112.97	-6.65	6.35	3.53	40°06'06.025"N	104°39'02.219"W	0.06	
1213.00	0.800	68.850	1212.96	-7.23	6.83	4.70	40°06'06.029"N	104°39'02.204"W	0.16	
1313.00	0.710	73.400	1312.95	-7.77	7.26	5.94	40°06'06.034"N	104°39'02.188"W	0.11	
1413.00	0.830	73.590	1412.94	-8.27	7.64	7.23	40°06'06.037"N	104°39'02.171"W	0.12	
1513.00	0.940	74.400	1512.93	-8.83	8.06	8.72	40°06'06.042"N	104°39'02.152"W	0.11	
1613.00	1.000	78.620	1612.91	-9.37	8.45	10.36	40°06'06.046"N	104°39'02.131"W	0.09	
1663.00	0.860	83.860	1662.91	-9.57	8.58	11.16	40°06'06.047"N	104°39'02.120"W	0.33	TIE-INTO GYRO SURVEYS
1772.00	0.700	66.320	1771.90	-10.05	8.94	12.59	40°06'06.050"N	104°39'02.102"W	0.26	BEGIN BHI MWD SURVEYS
1803.00	0.620	43.750	1802.90	-10.27	9.13	12.88	40°06'06.052"N	104°39'02.098"W	0.87	
1895.00	0.850	313.630	1894.89	-11.09	9.96	12.73	40°06'06.060"N	104°39'02.100"W	1.14	
1990.00	2.890	301.540	1989.84	-12.58	11.70	10.17	40°06'06.078"N	104°39'02.133"W	2.18	
2085.00	4.330	301.220	2084.64	-15.22	14.81	5.07	40°06'06.108"N	104°39'02.199"W	1.52	
2180.00	5.620	291.340	2179.29	-18.08	18.37	-2.33	40°06'06.143"N	104°39'02.294"W	1.63	
2275.00	6.630	296.060	2273.74	-21.31	22.47	-11.59	40°06'06.184"N	104°39'02.413"W	1.19	
2369.00	8.680	294.230	2366.90	-25.55	27.76	-22.94	40°06'06.236"N	104°39'02.559"W	2.20	
2464.00	7.680	303.650	2460.94	-30.90	34.22	-34.76	40°06'06.300"N	104°39'02.711"W	1.76	
2559.00	9.380	297.890	2554.88	-36.90	41.36	-46.89	40°06'06.371"N	104°39'02.867"W	2.00	
2654.00	10.880	294.740	2648.40	-42.88	48.74	-61.87	40°06'06.444"N	104°39'03.060"W	1.68	
2749.00	9.740	292.400	2741.87	-48.24	55.55	-77.45	40°06'06.511"N	104°39'03.261"W	1.28	
2844.00	10.280	289.330	2835.42	-52.67	61.42	-92.88	40°06'06.569"N	104°39'03.459"W	0.80	
2939.00	10.840	298.290	2928.82	-58.23	68.46	-108.74	40°06'06.639"N	104°39'03.663"W	1.82	
3033.00	11.340	287.940	3021.07	-63.72	75.50	-125.32	40°06'06.708"N	104°39'03.877"W	2.18	
3128.00	10.540	285.000	3114.34	-67.25	80.62	-142.60	40°06'06.759"N	104°39'04.099"W	1.03	
3223.00	11.090	276.000	3207.66	-68.84	83.83	-160.08	40°06'06.790"N	104°39'04.324"W	1.87	
3318.00	10.660	271.930	3300.96	-68.45	85.08	-177.95	40°06'06.803"N	104°39'04.554"W	0.93	
3413.00	10.480	276.070	3394.35	-68.07	86.29	-195.32	40°06'06.815"N	104°39'04.778"W	0.82	
3507.00	11.400	280.760	3486.64	-69.09	88.93	-212.95	40°06'06.841"N	104°39'05.004"W	1.36	
3602.00	10.570	279.750	3579.90	-70.67	92.15	-230.76	40°06'06.873"N	104°39'05.234"W	0.90	
3697.00	10.400	285.660	3673.32	-72.91	95.94	-247.60	40°06'06.910"N	104°39'05.450"W	1.15	
3792.00	10.460	291.160	3766.75	-76.82	101.37	-263.90	40°06'06.964"N	104°39'05.660"W	1.05	
3887.00	9.680	290.160	3860.28	-81.24	107.24	-279.44	40°06'07.022"N	104°39'05.860"W	0.84	
3982.00	10.250	292.760	3953.85	-85.84	113.26	-294.74	40°06'07.081"N	104°39'06.057"W	0.76	
4077.00	9.460	292.440	4047.45	-90.69	119.51	-309.75	40°06'07.143"N	104°39'06.250"W	0.83	



Actual Wellpath Report

COLFER 14N-34HZ AWP

Page 3 of 6



REFERENCE WELLPATH IDENTIFICATION

Operator	KERR-MCGEE OIL & GAS ONSHORE LP	Slot	SLOT#12 COLFER 14N-34HZ (231'FNL & 2413'FWL, SEC.34)
Area	COLORADO	Well	COLFER 14N-34HZ
Field	WELD COUNTY (KERR MCGEE)	Wellbore	COLFER 14N-34HZ AWB
Facility	SEC.34-T2N-R65W		

WELLPATH DATA (141 stations)

MD [ft]	Inclination [°]	Azimuth [°]	TVD [ft]	Vert Sect [ft]	North [ft]	East [ft]	Latitude	Longitude	DLS [°/100ft]	Comments
4172.00	10.340	299.700	4141.04	-96.53	126.72	-324.37	40°06'07.214"N	104°39'06.438"W	1.61	
4267.00	10.430	299.330	4234.48	-103.57	135.15	-339.27	40°06'07.298"N	104°39'06.630"W	0.12	
4362.00	10.140	299.930	4327.95	-110.57	143.54	-354.02	40°06'07.380"N	104°39'06.820"W	0.33	
4456.00	9.370	301.440	4420.59	-117.40	151.66	-367.72	40°06'07.461"N	104°39'06.996"W	0.86	
4551.00	7.860	294.420	4514.52	-122.95	158.38	-380.23	40°06'07.527"N	104°39'07.157"W	1.93	
4646.00	7.260	294.890	4608.70	-127.10	163.59	-391.59	40°06'07.579"N	104°39'07.303"W	0.63	
4741.00	5.650	292.090	4703.09	-130.48	167.87	-401.37	40°06'07.621"N	104°39'07.429"W	1.73	
4836.00	4.310	285.700	4797.73	-132.48	170.60	-409.14	40°06'07.648"N	104°39'07.529"W	1.52	
4931.00	2.540	294.540	4892.56	-133.82	172.44	-414.49	40°06'07.666"N	104°39'07.598"W	1.94	
5026.00	1.480	337.370	4987.50	-135.60	174.45	-416.88	40°06'07.686"N	104°39'07.629"W	1.86	
5120.00	1.200	348.840	5081.48	-137.62	176.53	-417.53	40°06'07.706"N	104°39'07.637"W	0.41	
5215.00	0.850	355.840	5176.46	-139.27	178.21	-417.78	40°06'07.723"N	104°39'07.640"W	0.39	
5310.00	1.240	359.510	5271.45	-140.99	179.94	-417.84	40°06'07.740"N	104°39'07.641"W	0.42	
5405.00	0.870	307.850	5366.43	-142.40	181.41	-418.42	40°06'07.755"N	104°39'07.649"W	1.03	
5500.00	1.110	239.900	5461.42	-142.26	181.39	-419.78	40°06'07.755"N	104°39'07.666"W	1.18	
5595.00	1.010	254.030	5556.40	-141.42	180.70	-421.38	40°06'07.748"N	104°39'07.687"W	0.29	
5689.00	1.130	277.270	5650.39	-141.15	180.59	-423.10	40°06'07.747"N	104°39'07.709"W	0.48	
5784.00	1.550	180.540	5745.37	-139.91	179.42	-424.04	40°06'07.735"N	104°39'07.721"W	2.13	
5879.00	1.760	175.930	5840.33	-137.19	176.68	-423.95	40°06'07.708"N	104°39'07.720"W	0.26	
5974.00	1.230	160.870	5935.30	-134.82	174.27	-423.51	40°06'07.684"N	104°39'07.714"W	0.69	
6069.00	1.000	155.750	6030.28	-133.17	172.55	-422.84	40°06'07.667"N	104°39'07.705"W	0.26	
6163.00	0.740	146.370	6124.27	-131.98	171.29	-422.16	40°06'07.655"N	104°39'07.697"W	0.31	
6258.00	0.820	152.490	6219.26	-130.93	170.18	-421.51	40°06'07.644"N	104°39'07.688"W	0.12	
6353.00	0.980	186.390	6314.25	-129.55	168.77	-421.29	40°06'07.630"N	104°39'07.685"W	0.58	
6448.00	0.640	174.680	6409.24	-128.21	167.43	-421.33	40°06'07.617"N	104°39'07.686"W	0.40	
6511.00	3.820	187.920	6472.19	-125.77	165.00	-421.58	40°06'07.593"N	104°39'07.689"W	5.08	
6542.00	6.180	184.620	6503.07	-123.07	162.32	-421.86	40°06'07.566"N	104°39'07.693"W	7.67	
6573.00	9.510	183.680	6533.77	-118.84	158.10	-422.16	40°06'07.524"N	104°39'07.697"W	10.75	
6605.00	12.720	181.200	6565.17	-112.68	151.94	-422.40	40°06'07.463"N	104°39'07.700"W	10.14	
6637.00	15.950	181.750	6596.17	-104.78	144.02	-422.61	40°06'07.385"N	104°39'07.703"W	10.10	
6669.00	19.730	183.990	6626.62	-94.98	134.23	-423.12	40°06'07.288"N	104°39'07.709"W	12.00	
6700.00	23.600	185.420	6655.43	-83.54	122.83	-424.07	40°06'07.176"N	104°39'07.721"W	12.60	
6732.00	27.480	186.680	6684.30	-69.75	109.11	-425.54	40°06'07.040"N	104°39'07.740"W	12.24	
6763.00	30.850	185.750	6711.36	-54.65	94.10	-427.17	40°06'06.892"N	104°39'07.761"W	10.97	
6795.00	33.180	185.780	6738.49	-37.69	77.22	-428.87	40°06'06.725"N	104°39'07.783"W	7.28	
6827.00	35.080	185.950	6764.98	-19.73	59.36	-430.70	40°06'06.549"N	104°39'07.807"W	5.94	
6858.00	37.340	183.720	6789.99	-1.43	41.11	-432.24	40°06'06.368"N	104°39'07.826"W	8.44	
6890.00	40.240	182.450	6814.93	18.60	21.10	-433.31	40°06'06.170"N	104°39'07.840"W	9.40	
6922.00	43.760	180.670	6838.71	39.97	-0.30	-433.88	40°06'05.959"N	104°39'07.848"W	11.61	
6953.00	46.790	178.830	6860.52	61.88	-22.32	-433.78	40°06'05.741"N	104°39'07.846"W	10.64	
6985.00	49.450	178.920	6881.88	85.56	-46.14	-433.31	40°06'05.506"N	104°39'07.840"W	8.32	
7016.00	50.830	178.780	6901.75	109.21	-69.93	-432.83	40°06'05.271"N	104°39'07.834"W	4.47	
7048.00	52.650	177.930	6921.57	134.15	-95.05	-432.11	40°06'05.023"N	104°39'07.825"W	6.06	
7080.00	53.940	177.290	6940.69	159.58	-120.68	-431.04	40°06'04.769"N	104°39'07.811"W	4.34	
7111.00	54.930	177.570	6958.72	184.56	-145.87	-429.91	40°06'04.520"N	104°39'07.796"W	3.28	



Actual Wellpath Report

COLFER 14N-34HZ AWP

Page 4 of 6



REFERENCE WELLPATH IDENTIFICATION

Operator	KERR-MCGEE OIL & GAS ONSHORE LP	Slot	SLOT#12 COLFER 14N-34HZ (231'FNL & 2413'FWL, SEC.34)
Area	COLORADO	Well	COLFER 14N-34HZ
Field	WELD COUNTY (KERR MCGEE)	Wellbore	COLFER 14N-34HZ AWB
Facility	SEC.34-T2N-R65W		

WELLPATH DATA (141 stations) † = interpolated/extrapolated station

MD [ft]	Inclination [°]	Azimuth [°]	TVD [ft]	Vert Sect [ft]	North [ft]	East [ft]	Latitude	Longitude	DLS [°/100ft]	Comments
7141.00	57.160	176.600	6975.48	209.19	-170.72	-428.64	40°06'04.275"N	104°39'07.780"W	7.90	
7173.00	58.960	176.700	6992.41	236.04	-197.83	-427.05	40°06'04.007"N	104°39'07.760"W	5.63	
7205.00	60.890	177.140	7008.44	263.44	-225.48	-425.56	40°06'03.734"N	104°39'07.740"W	6.15	
7236.00	65.650	176.520	7022.38	290.82	-253.11	-424.03	40°06'03.461"N	104°39'07.721"W	15.46	
7268.00	71.240	175.270	7034.13	320.17	-282.79	-421.90	40°06'03.167"N	104°39'07.693"W	17.84	
7299.00	76.520	175.950	7042.74	349.52	-312.47	-419.62	40°06'02.874"N	104°39'07.664"W	17.16	
7329.00	80.220	173.030	7048.79	378.38	-341.71	-416.79	40°06'02.585"N	104°39'07.628"W	15.59	
7373.00†	84.287	176.013	7054.72	421.21	-385.09	-412.64	40°06'02.156"N	104°39'07.574"W	11.43	7" CASING POINT
7403.00	87.070	178.020	7056.98	450.81	-414.96	-411.08	40°06'01.861"N	104°39'07.554"W	11.43	
7498.00	87.820	178.390	7061.21	545.00	-509.82	-408.11	40°06'00.924"N	104°39'07.516"W	0.88	
7593.00	89.320	179.390	7063.58	639.38	-604.77	-406.27	40°05'59.986"N	104°39'07.492"W	1.90	
7688.00	89.810	179.900	7064.30	733.92	-699.77	-405.68	40°05'59.047"N	104°39'07.484"W	0.74	
7783.00	89.930	179.540	7064.52	828.48	-794.76	-405.22	40°05'58.108"N	104°39'07.478"W	0.40	
7878.00	89.810	180.250	7064.74	923.07	-889.76	-405.04	40°05'57.169"N	104°39'07.476"W	0.76	
7973.00	89.500	180.170	7065.31	1017.70	-984.76	-405.39	40°05'56.230"N	104°39'07.481"W	0.34	
8067.00	90.060	181.080	7065.67	1111.39	-1078.75	-406.42	40°05'55.302"N	104°39'07.494"W	1.14	
8162.00	90.920	181.880	7064.86	1206.18	-1173.72	-408.87	40°05'54.363"N	104°39'07.525"W	1.24	
8257.00	91.730	182.870	7062.66	1301.03	-1268.61	-412.80	40°05'53.425"N	104°39'07.576"W	1.35	
8352.00	91.640	182.830	7059.87	1395.91	-1363.45	-417.53	40°05'52.488"N	104°39'07.637"W	0.10	
8447.00	91.350	182.650	7057.39	1490.79	-1458.31	-422.07	40°05'51.551"N	104°39'07.695"W	0.36	
8542.00	89.930	181.950	7056.33	1585.65	-1553.22	-425.88	40°05'50.613"N	104°39'07.744"W	1.67	
8637.00	89.470	182.030	7056.82	1680.50	-1648.16	-429.18	40°05'49.675"N	104°39'07.787"W	0.49	
8732.00	88.640	182.110	7058.39	1775.34	-1743.09	-432.61	40°05'48.737"N	104°39'07.831"W	0.88	
8827.00	88.450	181.430	7060.80	1870.13	-1838.01	-435.54	40°05'47.798"N	104°39'07.868"W	0.74	
8921.00	88.220	180.260	7063.53	1963.81	-1931.96	-436.93	40°05'46.870"N	104°39'07.886"W	1.27	
9015.00	87.770	181.160	7066.82	2057.46	-2025.89	-438.09	40°05'45.942"N	104°39'07.901"W	1.07	
9111.00	88.180	181.260	7070.21	2153.16	-2121.81	-440.12	40°05'44.994"N	104°39'07.927"W	0.44	
9206.00	89.470	180.020	7072.16	2247.83	-2216.78	-441.18	40°05'44.055"N	104°39'07.941"W	1.88	
9301.00	90.090	179.700	7072.53	2342.41	-2311.78	-440.95	40°05'43.117"N	104°39'07.938"W	0.73	
9396.00	90.920	179.700	7071.69	2436.96	-2406.77	-440.45	40°05'42.178"N	104°39'07.931"W	0.87	
9491.00	92.130	180.070	7069.16	2531.51	-2501.74	-440.26	40°05'41.239"N	104°39'07.929"W	1.33	
9585.00	92.000	179.720	7065.77	2625.04	-2595.68	-440.09	40°05'40.311"N	104°39'07.927"W	0.40	
9680.00	90.990	178.510	7063.30	2719.46	-2690.63	-438.62	40°05'39.373"N	104°39'07.908"W	1.66	
9775.00	91.820	179.290	7060.97	2813.85	-2785.58	-436.79	40°05'38.434"N	104°39'07.884"W	1.20	
9870.00	90.770	179.900	7058.82	2908.36	-2880.56	-436.12	40°05'37.496"N	104°39'07.876"W	1.28	
9965.00	88.920	179.390	7059.08	3002.91	-2975.55	-435.54	40°05'36.557"N	104°39'07.868"W	2.02	
10059.00	88.610	180.070	7061.10	3096.45	-3069.52	-435.09	40°05'35.628"N	104°39'07.862"W	0.79	
10154.00	89.320	179.580	7062.82	3191.01	-3164.51	-434.80	40°05'34.690"N	104°39'07.859"W	0.91	
10344.00	89.780	178.990	7064.31	3379.97	-3354.49	-432.43	40°05'32.812"N	104°39'07.828"W	0.39	
10438.00	90.770	178.620	7063.86	3473.38	-3448.46	-430.47	40°05'31.884"N	104°39'07.803"W	1.12	
10533.00	90.030	178.410	7063.20	3567.72	-3543.43	-428.01	40°05'30.945"N	104°39'07.771"W	0.81	
10723.00	91.260	178.470	7061.06	3756.36	-3733.34	-422.84	40°05'29.068"N	104°39'07.705"W	0.65	
10912.00	92.680	178.900	7054.56	3944.01	-3922.18	-418.50	40°05'27.202"N	104°39'07.649"W	0.78	
11007.00	92.300	180.030	7050.43	4038.44	-4017.08	-417.62	40°05'26.265"N	104°39'07.637"W	1.25	
11102.00	91.420	179.740	7047.35	4132.97	-4112.03	-417.43	40°05'25.326"N	104°39'07.635"W	0.98	



Actual Wellpath Report

COLFER 14N-34HZ AWP

Page 5 of 6



REFERENCE WELLPATH IDENTIFICATION

Operator	KERR-MCGEE OIL & GAS ONSHORE LP	Slot	SLOT#12 COLFER 14N-34HZ (231'FNL & 2413'FWL, SEC.34)
Area	COLORADO	Well	COLFER 14N-34HZ
Field	WELD COUNTY (KERR MCGEE)	Wellbore	COLFER 14N-34HZ AWB
Facility	SEC.34-T2N-R65W		

WELLPATH DATA (141 stations)

MD [ft]	Inclination [°]	Azimuth [°]	TVD [ft]	Vert Sect [ft]	North [ft]	East [ft]	Latitude	Longitude	DLS [°/100ft]	Comments
11197.00	89.310	181.050	7046.75	4227.62	-4207.02	-418.08	40°05'24.388"N	104°39'07.643"W	2.61	
11292.00	89.350	180.380	7047.86	4322.32	-4302.00	-419.27	40°05'23.449"N	104°39'07.658"W	0.71	
11386.00	89.380	180.140	7048.90	4415.96	-4396.00	-419.69	40°05'22.520"N	104°39'07.664"W	0.26	
11481.00	89.380	180.370	7049.93	4510.59	-4490.99	-420.11	40°05'21.581"N	104°39'07.669"W	0.24	
11513.00	89.500	180.060	7050.24	4542.46	-4522.99	-420.23	40°05'21.265"N	104°39'07.671"W	1.04	LAST BHI MWD SURVEY
11568.00	89.500	180.060	7050.72	4597.24	-4577.99	-420.29	40°05'20.722"N	104°39'07.672"W	0.00	PROJECTION TO BIT

HOLE & CASING SECTIONS - Ref Wellbore: COLFER 14N-34HZ AWB Ref Wellpath: COLFER 14N-34HZ AWP

String/Diameter	Start MD [ft]	End MD [ft]	Interval [ft]	Start TVD [ft]	End TVD [ft]	Start N/S [ft]	Start E/W [ft]	End N/S [ft]	End E/W [ft]
12.25in Open Hole	13.00	1760.00	1747.00	13.00	1759.90	0.00	0.00	8.88	12.45
9.625in Casing Surface	13.00	1760.00	1747.00	13.00	1759.90	0.00	0.00	8.88	12.45
8.75in Open Hole	1760.00	7383.00	5623.00	1759.90	7055.63	8.88	12.45	-395.03	-412.00
7in Casing Intermediate	13.00	7373.00	7360.00	13.00	7054.72	0.00	0.00	-385.09	-412.64
6.125in Open Hole	7373.00	11568.00	4195.00	7054.72	7050.72	-385.09	-412.64	-4577.99	-420.29

TARGETS

Name	MD [ft]	TVD [ft]	North [ft]	East [ft]	Grid East [US ft]	Grid North [US ft]	Latitude	Longitude	Shape
COLFER PAD SECTION LINES		19.00	-240.06	-1808.59	3235789.91	1280758.25	40°06'03.589"N	104°39'25.538"W	polygon
COLFER 14N-34HZ BHL ON PLAT (460'FSL & 1977'FWL, SEC.34) REV-1		7047.00	-4602.13	-430.89	3237209.26	1276409.76	40°05'20.483"N	104°39'07.808"W	point
COLFER 14N-34HZ LAND BOX		7047.00	0.00	0.00	3237596.03	1281015.61	40°06'05.962"N	104°39'02.264"W	polygon
COLFER PAD HARDLINES (460' SETBACKS)		7047.00	-240.06	-1808.59	3235789.91	1280758.25	40°06'03.589"N	104°39'25.538"W	polygon

WELLPATH COMPOSITION - Ref Wellbore: COLFER 14N-34HZ AWB Ref Wellpath: COLFER 14N-34HZ AWP

Start MD [ft]	End MD [ft]	Positional Uncertainty Model	Log Name/Comment	Wellbore
13.00	1663.00	Generic gyro - continuous (Standard)	MS GYRO SURVEYS <113-1663>	COLFER 14N-34HZ AWB
1663.00	7329.00	NaviTrak (MagCorr)	BHI MWD SURVEYS 8 3/4" HOLE <1772-7329>	COLFER 14N-34HZ AWB
7329.00	11513.00	NaviTrak (MagCorr)	BHI MWD SURVEYS 6 1/8" HOLE <7403-11513>	COLFER 14N-34HZ AWB
11513.00	11568.00	Blind Drilling (std)	Projection to bit	COLFER 14N-34HZ AWB



Actual Wellpath Report

COLFER 14N-34HZ AWP

Page 6 of 6



REFERENCE WELLPATH IDENTIFICATION			
Operator	KERR-MCGEE OIL & GAS ONSHORE LP	Slot	SLOT#12 COLFER 14N-34HZ (231'FNL & 2413'FWL, SEC.34)
Area	COLORADO	Well	COLFER 14N-34HZ
Field	WELD COUNTY (KERR MCGEE)	Wellbore	COLFER 14N-34HZ AWB
Facility	SEC.34-T2N-R65W		

WELLPATH COMMENTS				
MD [ft]	Inclination [°]	Azimuth [°]	TVD [ft]	Comment
13.00	0.000	18.970	13.00	TIE-ON
113.00	0.170	18.970	113.00	BEGIN GYRO SURVEYS
1663.00	0.860	83.860	1662.91	TIE-INTO GYRO SURVEYS
1772.00	0.700	66.320	1771.90	BEGIN BHI MWD SURVEYS
7373.00	84.287	176.013	7054.72	7" CASING POINT
11513.00	89.500	180.060	7050.24	LAST BHI MWD SURVEY
11568.00	89.500	180.060	7050.72	PROJECTION TO BIT