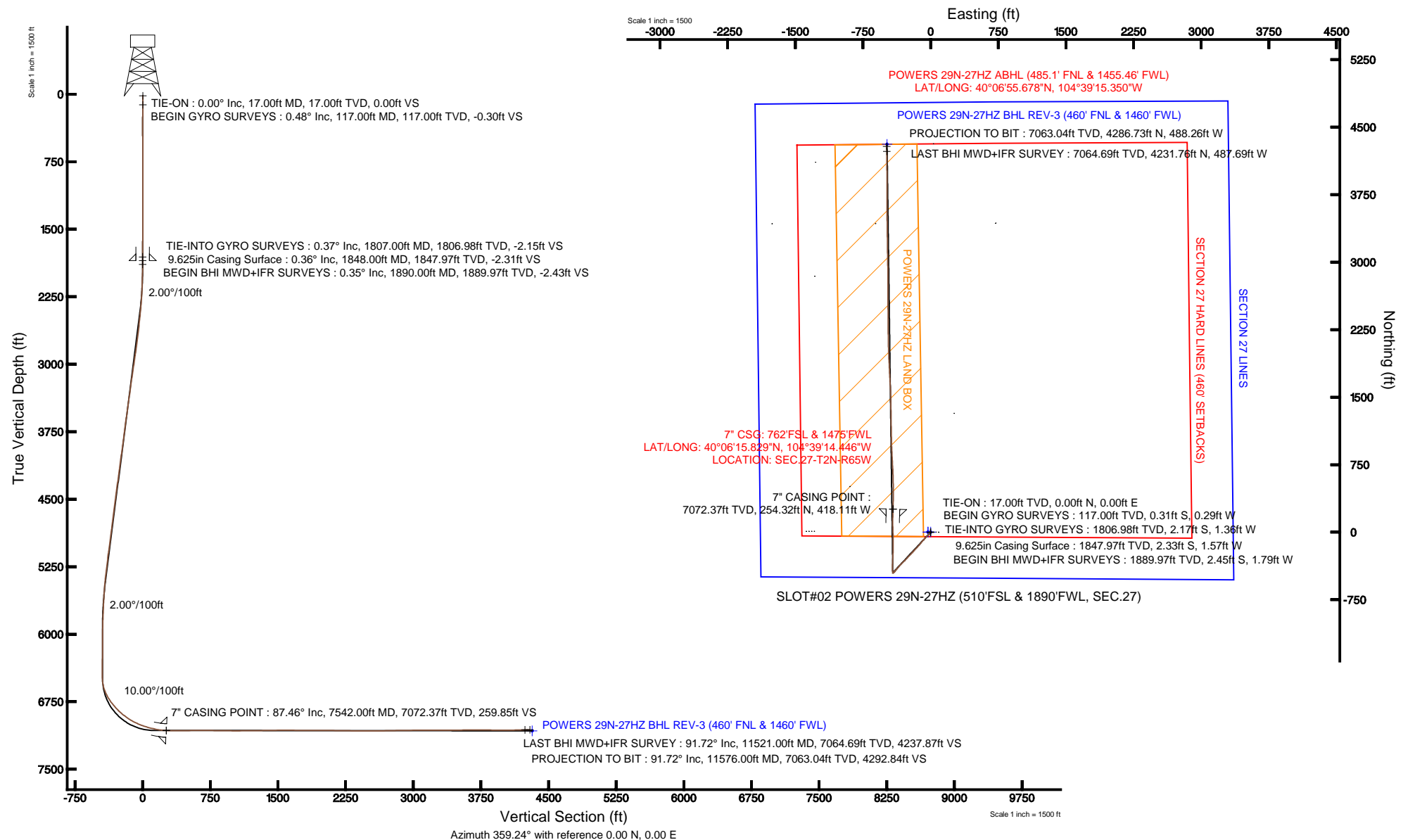


Location:	COLORADO	Slot:	SLOT#02 POWERS 29N-27HZ (510'FSL & 1890'FWL, SEC.27)
Field:	WELD COUNTY (KERR MCGEE)	Well:	POWERS 29N-27HZ
Facility:	SEC.27-T2N-R65W	Wellbore:	POWERS 29N-27HZ PWB

Plot reference wellpath is POWERS 29N-27HZ (REV-B.0) PWP	
True vertical depths are referenced to XTREME 6 (RKB)	Grid System: NAD83 / Lambert Colorado SP, Northern Zone (501), US feet
Measured depths are referenced to XTREME 6 (RKB)	North Reference: True north
XTREME 6 (RKB) to Mean Sea Level: 4966 feet	Scale: True distance
Mean Sea Level to Mud line (At Slot: SLOT#02 POWERS 29N-27HZ (510FSL & 1890FWL, SEC.27)): 0 feet	Depths are in feet
Coordinates are in feet referenced to Slot	Created by: wilsjef02 on 4/11/2013





# Actual Wellpath Report

POWERS 29N-27HZ AWP  
Page 1 of 7



## REFERENCE WELLPATH IDENTIFICATION

Operator	KERR-MCGEE OIL & GAS ONSHORE LP	Slot	SLOT#02 POWERS 29N-27HZ (510'FSL & 1890'FWL, SEC.27)
Area	COLORADO	Well	POWERES 29N-27HZ
Field	WELD COUNTY (KERR MCGEE)	Wellbore	POWERS 29N-27HZ AWP
Facility	SEC.27-T2N-R65W		

## REPORT SETUP INFORMATION

Projection System	NAD83 / Lambert Colorado SP, Northern Zone (501), US feet	Software System	WellArchitect® 3.0.2
North Reference	True	User	Wilsjef02
Scale	0.99996	Report Generated	4/11/2013 at 08:00:23
Convergence at slot	0.55° East	Database/Source file	WellArchitectDB/POWERS_29N-27HZ_AWP.xml

## WELLPATH LOCATION

	Local coordinates		Grid coordinates		Geographic coordinates	
	North[ft]	East[ft]	Easting[US ft]	Northing[US ft]	Latitude	Longitude
Slot Location	0.00	30.07	3237060.48	1281754.66	40°06'13.316"N	104°39'09.065"W
Facility Reference Pt			3237030.41	1281754.37	40°06'13.316"N	104°39'09.452"W
Field Reference Pt			3197771.84	1268891.29	40°04'09.600"N	104°47'36.000"W

## WELLPATH DATUM

Calculation method	Minimum curvature	XTREME 6 (RKB) to Facility Vertical Datum	4966.00ft
Horizontal Reference Pt	Slot	XTREME 6 (RKB) to Mean Sea Level	4966.00ft
Vertical Reference Pt	XTREME 6 (RKB)	XTREME 6 (RKB) to Mud Line at Slot (SLOT#02 POWERS 29N-27HZ (510'FSL & 1890'FWL, SEC.27))	4966.00ft
MD Reference Pt	XTREME 6 (RKB)	Section Origin	N 0.00, E 0.00 ft
Field Vertical Reference	Mean Sea Level	Section Azimuth	353.50°



# Actual Wellpath Report

POWERS 29N-27HZ AWP

Page 2 of 7



## REFERENCE WELLPATH IDENTIFICATION

Operator	KERR-MCGEE OIL & GAS ONSHORE LP	Slot	SLOT#02 POWERS 29N-27HZ (510'FSL & 1890'FWL, SEC.27)
Area	COLORADO	Well	POWERS 29N-27HZ
Field	WELD COUNTY (KERR MCGEE)	Wellbore	POWERS 29N-27HZ AWP
Facility	SEC.27-T2N-R65W		

## WELLPATH DATA (148 stations) † = interpolated/extrapolated station

MD [ft]	Inclination [°]	Azimuth [°]	TVD [ft]	Vert Sect [ft]	North [ft]	East [ft]	Latitude	Longitude	DLS [°/100ft]	Comments
0.00†	0.000	223.100	0.00	0.00	0.00	0.00	40°06'13.316"N	104°39'09.065"W	0.00	
17.00	0.000	223.100	17.00	0.00	0.00	0.00	40°06'13.316"N	104°39'09.065"W	0.00	TIE-ON
117.00	0.480	223.100	117.00	-0.27	-0.31	-0.29	40°06'13.313"N	104°39'09.069"W	0.48	BEGIN GYRO SURVEYS
217.00	0.460	202.260	217.00	-0.89	-0.98	-0.72	40°06'13.306"N	104°39'09.074"W	0.17	
317.00	0.360	230.880	316.99	-1.42	-1.55	-1.12	40°06'13.301"N	104°39'09.079"W	0.22	
417.00	0.370	331.050	416.99	-1.29	-1.47	-1.52	40°06'13.301"N	104°39'09.085"W	0.56	
517.00	0.360	293.880	516.99	-0.83	-1.06	-1.96	40°06'13.306"N	104°39'09.090"W	0.23	
617.00	0.240	18.200	616.99	-0.48	-0.73	-2.19	40°06'13.309"N	104°39'09.093"W	0.41	
717.00	0.390	24.690	716.99	0.00	-0.22	-1.98	40°06'13.314"N	104°39'09.090"W	0.15	
817.00	0.360	36.920	816.99	0.52	0.34	-1.65	40°06'13.319"N	104°39'09.086"W	0.09	
917.00	0.280	254.110	916.98	0.71	0.52	-1.69	40°06'13.321"N	104°39'09.087"W	0.61	
1017.00	0.270	41.200	1016.98	0.83	0.63	-1.77	40°06'13.322"N	104°39'09.088"W	0.53	
1117.00	0.240	121.250	1116.98	0.86	0.70	-1.44	40°06'13.323"N	104°39'09.084"W	0.33	
1217.00	0.230	133.570	1216.98	0.58	0.45	-1.11	40°06'13.320"N	104°39'09.079"W	0.05	
1317.00	0.260	204.540	1316.98	0.23	0.11	-1.06	40°06'13.317"N	104°39'09.079"W	0.29	
1417.00	0.270	175.170	1416.98	-0.20	-0.33	-1.14	40°06'13.313"N	104°39'09.080"W	0.13	
1517.00	0.280	128.780	1516.98	-0.61	-0.72	-0.93	40°06'13.309"N	104°39'09.077"W	0.22	
1617.00	0.440	213.120	1616.98	-1.08	-1.20	-0.95	40°06'13.304"N	104°39'09.077"W	0.50	
1717.00	0.280	177.810	1716.98	-1.62	-1.76	-1.15	40°06'13.299"N	104°39'09.080"W	0.27	
1807.00	0.370	229.290	1806.98	-2.00	-2.17	-1.36	40°06'13.295"N	104°39'09.082"W	0.33	TIE-INTO GYRO SURVEYS
1890.00	0.350	244.670	1889.97	-2.24	-2.45	-1.79	40°06'13.292"N	104°39'09.088"W	0.12	BEGIN BHI MWD+IFR SURVEYS
1975.00	1.740	224.190	1974.96	-3.14	-3.49	-2.93	40°06'13.282"N	104°39'09.103"W	1.67	
2060.00	2.610	225.580	2059.90	-5.14	-5.77	-5.21	40°06'13.259"N	104°39'09.132"W	1.03	
2145.00	3.650	231.680	2144.77	-7.76	-8.80	-8.71	40°06'13.229"N	104°39'09.177"W	1.28	
2231.00	4.310	220.810	2230.56	-11.40	-12.95	-12.97	40°06'13.188"N	104°39'09.232"W	1.16	
2316.00	5.490	218.980	2315.25	-16.41	-18.53	-17.62	40°06'13.133"N	104°39'09.292"W	1.40	
2401.00	6.800	217.450	2399.76	-22.89	-25.68	-23.24	40°06'13.062"N	104°39'09.364"W	1.55	
2486.00	7.630	216.450	2484.09	-30.64	-34.22	-29.65	40°06'12.978"N	104°39'09.447"W	0.99	
2571.00	8.810	225.410	2568.21	-38.79	-43.32	-37.64	40°06'12.888"N	104°39'09.549"W	2.05	
2657.00	9.570	223.900	2653.11	-47.41	-53.10	-47.28	40°06'12.791"N	104°39'09.674"W	0.93	
2742.00	10.090	223.290	2736.86	-56.72	-63.61	-57.29	40°06'12.687"N	104°39'09.802"W	0.62	
2827.00	11.040	222.520	2820.42	-66.86	-75.03	-67.90	40°06'12.575"N	104°39'09.939"W	1.13	
2912.00	10.210	219.290	2903.96	-77.45	-86.86	-78.17	40°06'12.458"N	104°39'10.071"W	1.20	
2996.00	11.400	221.730	2986.47	-88.18	-98.82	-88.41	40°06'12.339"N	104°39'10.203"W	1.52	
3082.00	11.060	219.760	3070.83	-99.54	-111.50	-99.34	40°06'12.214"N	104°39'10.343"W	0.60	
3167.00	10.640	219.960	3154.31	-110.58	-123.78	-109.59	40°06'12.093"N	104°39'10.475"W	0.50	
3252.00	10.640	220.950	3237.84	-121.30	-135.72	-119.78	40°06'11.975"N	104°39'10.606"W	0.22	
3337.00	10.000	218.930	3321.47	-131.78	-147.39	-129.56	40°06'11.859"N	104°39'10.732"W	0.86	
3422.00	10.710	220.550	3405.08	-142.34	-159.13	-139.33	40°06'11.743"N	104°39'10.858"W	0.90	
3507.00	11.170	224.930	3488.54	-152.86	-170.96	-150.28	40°06'11.626"N	104°39'10.999"W	1.12	
3592.00	10.770	224.750	3571.99	-162.96	-182.43	-161.69	40°06'11.513"N	104°39'11.146"W	0.47	
3676.00	10.540	223.950	3654.54	-172.77	-193.54	-172.54	40°06'11.403"N	104°39'11.285"W	0.33	
3762.00	9.690	222.820	3739.20	-182.50	-204.51	-182.92	40°06'11.295"N	104°39'11.419"W	1.01	
3847.00	10.190	222.120	3822.93	-192.13	-215.33	-192.83	40°06'11.188"N	104°39'11.546"W	0.61	
3932.00	11.010	221.230	3906.47	-202.56	-227.02	-203.22	40°06'11.073"N	104°39'11.680"W	0.98	



# Actual Wellpath Report

POWERS 29N-27HZ AWP  
Page 3 of 7



REFERENCE WELLPATH IDENTIFICATION			
Operator	KERR-MCGEE OIL & GAS ONSHORE LP	Slot	SLOT#02 POWERS 29N-27HZ (510'FSL & 1890'FWL, SEC.27)
Area	COLORADO	Well	POWERS 29N-27HZ
Field	WELD COUNTY (KERR MCGEE)	Wellbore	POWERS 29N-27HZ AWP
Facility	SEC.27-T2N-R65W		

WELLPATH DATA (148 stations)										Comments
MD [ft]	Inclination [°]	Azimuth [°]	TVD [ft]	Vert Sect [ft]	North [ft]	East [ft]	Latitude	Longitude	DLS [°/100ft]	
4017.00	10.140	221.080	3990.03	-213.07	-238.76	-213.49	40°06'10.957"N	104°39'11.812"W	1.02	
4102.00	10.830	224.220	4073.61	-223.17	-250.12	-223.97	40°06'10.844"N	104°39'11.947"W	1.05	
4187.00	10.800	224.580	4157.10	-233.23	-261.52	-235.13	40°06'10.732"N	104°39'12.091"W	0.09	
4273.00	10.790	223.540	4241.58	-243.46	-273.09	-246.33	40°06'10.617"N	104°39'12.235"W	0.23	
4358.00	10.560	222.720	4325.11	-253.66	-284.58	-257.10	40°06'10.504"N	104°39'12.374"W	0.32	
4443.00	9.900	221.790	4408.76	-263.61	-295.75	-267.25	40°06'10.393"N	104°39'12.504"W	0.80	
4528.00	10.450	224.380	4492.42	-273.34	-306.71	-277.51	40°06'10.285"N	104°39'12.636"W	0.84	
4613.00	9.680	224.550	4576.11	-282.69	-317.31	-287.92	40°06'10.180"N	104°39'12.770"W	0.91	
4698.00	10.450	225.650	4659.80	-291.92	-327.80	-298.44	40°06'10.077"N	104°39'12.906"W	0.93	
4784.00	11.160	226.780	4744.28	-301.68	-338.95	-310.08	40°06'09.966"N	104°39'13.055"W	0.86	
4868.00	10.560	228.370	4826.77	-310.97	-349.63	-321.76	40°06'09.861"N	104°39'13.206"W	0.80	
4954.00	9.960	221.320	4911.40	-320.50	-360.45	-332.56	40°06'09.754"N	104°39'13.345"W	1.62	
5039.00	10.270	219.070	4995.08	-330.74	-371.85	-342.19	40°06'09.641"N	104°39'13.469"W	0.59	
5124.00	10.480	220.000	5078.69	-341.36	-383.66	-351.94	40°06'09.525"N	104°39'13.594"W	0.32	
5210.00	9.100	221.220	5163.44	-351.32	-394.76	-361.45	40°06'09.415"N	104°39'13.716"W	1.62	
5295.00	9.620	224.040	5247.30	-360.36	-404.93	-370.81	40°06'09.314"N	104°39'13.837"W	0.82	
5380.00	8.670	221.270	5331.22	-369.18	-414.85	-379.98	40°06'09.216"N	104°39'13.955"W	1.23	
5465.00	7.260	220.010	5415.40	-377.18	-423.78	-387.65	40°06'09.128"N	104°39'14.054"W	1.67	
5550.00	6.110	220.050	5499.82	-383.99	-431.35	-394.02	40°06'09.053"N	104°39'14.136"W	1.35	
5635.00	5.080	228.010	5584.42	-389.29	-437.33	-399.73	40°06'08.994"N	104°39'14.209"W	1.51	
5720.00	3.950	226.070	5669.15	-393.25	-441.88	-404.63	40°06'08.949"N	104°39'14.272"W	1.34	
5806.00	3.040	219.880	5754.99	-396.63	-445.69	-408.23	40°06'08.912"N	104°39'14.318"W	1.14	
5891.00	2.380	225.260	5839.90	-399.27	-448.66	-410.93	40°06'08.882"N	104°39'14.353"W	0.83	
5976.00	1.930	219.700	5924.84	-401.36	-451.00	-413.09	40°06'08.859"N	104°39'14.381"W	0.58	
6061.00	1.490	239.180	6009.80	-402.80	-452.67	-414.96	40°06'08.843"N	104°39'14.405"W	0.85	
6146.00	1.010	263.880	6094.78	-403.25	-453.32	-416.65	40°06'08.836"N	104°39'14.427"W	0.84	
6232.00	1.400	267.250	6180.76	-403.18	-453.45	-418.46	40°06'08.835"N	104°39'14.450"W	0.46	
6317.00	0.520	198.780	6265.75	-403.46	-453.86	-419.62	40°06'08.831"N	104°39'14.465"W	1.53	
6402.00	0.830	206.530	6350.74	-404.32	-454.78	-420.02	40°06'08.822"N	104°39'14.470"W	0.38	
6487.00	0.630	246.720	6435.74	-404.98	-455.51	-420.72	40°06'08.815"N	104°39'14.479"W	0.63	
6571.00	4.340	349.970	6519.66	-401.93	-452.57	-421.70	40°06'08.844"N	104°39'14.492"W	5.39	
6614.00	10.990	354.750	6562.25	-396.21	-446.88	-422.36	40°06'08.900"N	104°39'14.500"W	15.52	
6657.00	17.190	355.200	6603.93	-385.75	-436.45	-423.26	40°06'09.003"N	104°39'14.512"W	14.42	
6699.00	22.910	357.450	6643.37	-371.38	-422.09	-424.15	40°06'09.145"N	104°39'14.523"W	13.74	
6742.00	27.710	359.770	6682.24	-353.08	-403.72	-424.56	40°06'09.326"N	104°39'14.529"W	11.40	
6784.00	31.340	2.440	6718.78	-332.57	-383.03	-424.14	40°06'09.531"N	104°39'14.523"W	9.19	
6827.00	35.460	1.790	6754.67	-309.17	-359.38	-423.27	40°06'09.764"N	104°39'14.512"W	9.62	
6869.00	39.260	2.310	6788.05	-283.98	-333.92	-422.35	40°06'10.016"N	104°39'14.500"W	9.08	
6912.00	42.950	2.240	6820.44	-256.04	-305.68	-421.23	40°06'10.295"N	104°39'14.486"W	8.58	
6954.00	45.830	3.060	6850.45	-227.04	-276.33	-419.87	40°06'10.585"N	104°39'14.468"W	6.99	
6997.00	49.240	2.650	6879.48	-195.74	-244.65	-418.29	40°06'10.898"N	104°39'14.448"W	7.96	
7040.00	52.080	2.900	6906.73	-162.93	-211.44	-416.68	40°06'11.226"N	104°39'14.427"W	6.62	
7082.00	54.850	0.230	6931.74	-129.52	-177.71	-415.77	40°06'11.560"N	104°39'14.416"W	8.34	
7125.00	58.320	359.850	6955.41	-93.87	-141.83	-415.75	40°06'11.914"N	104°39'14.415"W	8.10	
7167.00	62.630	359.080	6976.11	-57.53	-105.29	-416.10	40°06'12.275"N	104°39'14.420"W	10.39	



# Actual Wellpath Report

POWERS 29N-27HZ AWP  
Page 4 of 7



REFERENCE WELLPATH IDENTIFICATION			
Operator	KERR-MCGEE OIL & GAS ONSHORE LP	Slot	SLOT#02 POWERS 29N-27HZ (510'FSL & 1890'FWL, SEC.27)
Area	COLORADO	Well	POWERS 29N-27HZ
Field	WELD COUNTY (KERR MCGEE)	Wellbore	POWERS 29N-27HZ AWP
Facility	SEC.27-T2N-R65W		

WELLPATH DATA (148 stations) † = interpolated/extrapolated station										
MD [ft]	Inclination [°]	Azimuth [°]	TVD [ft]	Vert Sect [ft]	North [ft]	East [ft]	Latitude	Longitude	DLS [°/100ft]	Comments
7210.00	66.110	358.800	6994.70	-18.94	-66.54	-416.81	40°06'12.658"N	104°39'14.429"W	8.11	
7253.00	68.720	358.160	7011.22	20.61	-26.85	-417.87	40°06'13.051"N	104°39'14.443"W	6.22	
7295.00	71.280	358.380	7025.58	59.94	12.59	-419.06	40°06'13.440"N	104°39'14.458"W	6.12	
7338.00	74.460	358.460	7038.24	100.87	53.67	-420.19	40°06'13.846"N	104°39'14.473"W	7.40	
7380.00	76.930	359.460	7048.62	141.38	94.35	-420.93	40°06'14.248"N	104°39'14.482"W	6.32	
7423.00	78.560	0.550	7057.75	183.13	136.37	-420.93	40°06'14.664"N	104°39'14.482"W	4.53	
7465.00	81.770	1.110	7064.92	224.17	177.74	-420.32	40°06'15.072"N	104°39'14.474"W	7.75	
7508.00	84.610	1.820	7070.02	266.45	220.42	-419.23	40°06'15.494"N	104°39'14.460"W	6.81	
7542.00†	87.460	1.969	7072.37	300.00	254.32	-418.11	40°06'15.829"N	104°39'14.446"W	8.39	7" CASING POINT
7563.00	89.220	2.060	7072.98	320.76	275.30	-417.37	40°06'16.036"N	104°39'14.436"W	8.39	
7648.00	89.930	0.780	7073.61	404.95	360.27	-415.27	40°06'16.876"N	104°39'14.409"W	1.72	
7733.00	90.740	0.430	7073.11	489.29	445.26	-414.37	40°06'17.716"N	104°39'14.398"W	1.04	
7819.00	90.330	358.490	7072.31	574.82	531.25	-415.18	40°06'18.566"N	104°39'14.408"W	2.31	
7904.00	89.870	358.770	7072.16	659.48	616.22	-417.21	40°06'19.406"N	104°39'14.434"W	0.63	
7989.00	90.030	356.790	7072.23	744.24	701.15	-420.50	40°06'20.245"N	104°39'14.477"W	2.34	
8074.00	89.560	357.140	7072.54	829.08	786.03	-425.01	40°06'21.084"N	104°39'14.535"W	0.69	
8159.00	89.250	356.760	7073.42	913.92	870.91	-429.53	40°06'21.922"N	104°39'14.593"W	0.58	
8244.00	89.160	358.280	7074.60	998.70	955.82	-433.21	40°06'22.761"N	104°39'14.640"W	1.79	
8329.00	90.190	358.900	7075.08	1083.37	1040.79	-435.30	40°06'23.601"N	104°39'14.667"W	1.41	
8414.00	90.340	358.770	7074.69	1168.00	1125.77	-437.02	40°06'24.441"N	104°39'14.689"W	0.23	
8499.00	90.620	359.050	7073.98	1252.61	1210.75	-438.64	40°06'25.281"N	104°39'14.710"W	0.47	
8584.00	91.090	359.350	7072.71	1337.19	1295.73	-439.83	40°06'26.121"N	104°39'14.726"W	0.66	
8669.00	90.530	359.300	7071.51	1421.74	1380.72	-440.83	40°06'26.960"N	104°39'14.738"W	0.66	
8755.00	91.100	359.350	7070.28	1507.29	1466.70	-441.84	40°06'27.810"N	104°39'14.751"W	0.67	
8840.00	90.520	357.010	7069.08	1591.99	1551.65	-444.54	40°06'28.650"N	104°39'14.786"W	2.84	
8925.00	89.200	356.950	7069.29	1676.83	1636.53	-449.02	40°06'29.488"N	104°39'14.844"W	1.55	
9010.00	89.470	357.220	7070.28	1761.66	1721.41	-453.34	40°06'30.327"N	104°39'14.900"W	0.45	
9095.00	89.750	357.370	7070.86	1846.47	1806.31	-457.35	40°06'31.166"N	104°39'14.951"W	0.37	
9180.00	90.400	357.120	7070.74	1931.29	1891.22	-461.44	40°06'32.005"N	104°39'15.004"W	0.82	
9266.00	90.030	357.860	7070.42	2017.08	1977.13	-465.21	40°06'32.854"N	104°39'15.052"W	0.96	
9351.00	88.920	357.900	7071.20	2101.82	2062.07	-468.35	40°06'33.694"N	104°39'15.093"W	1.31	
9435.00	88.920	359.590	7072.78	2185.45	2146.03	-470.19	40°06'34.523"N	104°39'15.116"W	2.01	
9520.00	89.320	359.220	7074.09	2269.99	2231.02	-471.07	40°06'35.363"N	104°39'15.128"W	0.64	
9605.00	89.350	359.650	7075.08	2354.53	2316.01	-471.91	40°06'36.203"N	104°39'15.139"W	0.51	
9690.00	89.480	359.840	7075.94	2439.02	2401.00	-472.29	40°06'37.043"N	104°39'15.144"W	0.27	
9775.00	89.380	358.920	7076.79	2523.57	2485.99	-473.21	40°06'37.883"N	104°39'15.155"W	1.09	
9861.00	90.530	0.000	7076.86	2609.10	2571.98	-474.02	40°06'38.733"N	104°39'15.166"W	1.83	
9946.00	91.310	359.730	7075.49	2693.57	2656.97	-474.22	40°06'39.573"N	104°39'15.168"W	0.97	
10029.00	91.450	0.290	7073.49	2776.01	2739.95	-474.20	40°06'40.392"N	104°39'15.168"W	0.70	
10114.00	90.610	359.380	7071.97	2860.48	2824.93	-474.45	40°06'41.232"N	104°39'15.171"W	1.46	
10199.00	90.960	359.730	7070.80	2944.99	2909.92	-475.11	40°06'42.072"N	104°39'15.180"W	0.58	
10284.00	90.360	358.820	7069.82	3029.56	2994.91	-476.18	40°06'42.912"N	104°39'15.194"W	1.28	
10369.00	89.780	359.150	7069.72	3114.17	3079.89	-477.69	40°06'43.752"N	104°39'15.213"W	0.79	
10455.00	90.210	359.010	7069.73	3199.76	3165.88	-479.07	40°06'44.602"N	104°39'15.231"W	0.53	
10540.00	90.270	359.420	7069.37	3284.34	3250.87	-480.24	40°06'45.442"N	104°39'15.246"W	0.49	



# Actual Wellpath Report

POWERS 29N-27HZ AWP  
Page 5 of 7



## REFERENCE WELLPATH IDENTIFICATION

Operator	KERR-MCGEE OIL & GAS ONSHORE LP	Slot	SLOT#02 POWERS 29N-27HZ (510'FSL & 1890'FWL, SEC.27)
Area	COLORADO	Well	POWERS 29N-27HZ
Field	WELD COUNTY (KERR MCGEE)	Wellbore	POWERS 29N-27HZ AWP
Facility	SEC.27-T2N-R65W		

## WELLPATH DATA (148 stations)

MD [ft]	Inclination [°]	Azimuth [°]	TVD [ft]	Vert Sect [ft]	North [ft]	East [ft]	Latitude	Longitude	DLS [°/100ft]	Comments
10625.00	90.620	358.860	7068.71	3368.92	3335.86	-481.51	40°06'46.281"N	104°39'15.262"W	0.78	
10710.00	89.960	359.510	7068.28	3453.50	3420.85	-482.72	40°06'47.121"N	104°39'15.278"W	1.09	
10795.00	90.610	359.560	7067.86	3538.03	3505.85	-483.41	40°06'47.961"N	104°39'15.287"W	0.77	
10880.00	90.950	359.900	7066.70	3622.52	3590.84	-483.81	40°06'48.801"N	104°39'15.292"W	0.57	
10965.00	89.560	359.880	7066.32	3706.99	3675.83	-483.97	40°06'49.641"N	104°39'15.294"W	1.64	
11051.00	90.210	359.890	7066.49	3792.46	3761.83	-484.15	40°06'50.491"N	104°39'15.296"W	0.76	
11134.00	88.980	359.780	7067.08	3874.95	3844.83	-484.39	40°06'51.311"N	104°39'15.300"W	1.49	
11219.00	89.380	359.690	7068.30	3959.43	3929.82	-484.78	40°06'52.151"N	104°39'15.305"W	0.48	
11304.00	90.240	359.330	7068.58	4043.97	4014.81	-485.51	40°06'52.991"N	104°39'15.314"W	1.10	
11390.00	90.920	359.550	7067.71	4129.50	4100.80	-486.35	40°06'53.841"N	104°39'15.325"W	0.83	
11475.00	91.440	359.330	7065.96	4214.03	4185.78	-487.18	40°06'54.680"N	104°39'15.336"W	0.66	
11521.00	91.720	359.400	7064.69	4259.77	4231.76	-487.69	40°06'55.135"N	104°39'15.342"W	0.63	LAST BHI MWD+IFR SURVEY
11576.00	91.720	359.400	7063.04	4314.45	4286.73	-488.26	40°06'55.678"N	104°39'15.350"W	0.00	PROJECTION TO BIT

## HOLE & CASING SECTIONS - Ref Wellbore: POWERS 29N-27HZ AWP Ref Wellpath: POWERS 29N-27HZ AWP

String/Diameter	Start MD [ft]	End MD [ft]	Interval [ft]	Start TVD [ft]	End TVD [ft]	Start N/S [ft]	Start E/W [ft]	End N/S [ft]	End E/W [ft]
12.25in Open Hole	17.00	1848.00	1831.00	17.00	1847.97	0.00	0.00	-2.33	-1.57
9.625in Casing Surface	17.00	1848.00	1831.00	17.00	1847.97	0.00	0.00	-2.33	-1.57
8.75in Open Hole	1848.00	7559.00	5711.00	1847.97	7072.91	-2.33	-1.57	271.30	-417.52
7in Casing Intermediate	17.00	7542.00	7525.00	17.00	7072.37	0.00	0.00	254.32	-418.11
6.125in Open Hole	7542.00	11576.00	4034.00	7072.37	7063.04	254.32	-418.11	4286.73	-488.26



# Actual Wellpath Report

POWERS 29N-27HZ AWP  
Page 6 of 7



## REFERENCE WELLPATH IDENTIFICATION

Operator	KERR-MCGEE OIL & GAS ONSHORE LP	Slot	SLOT#02 POWERS 29N-27HZ (510'FSL & 1890'FWL, SEC.27)
Area	COLORADO	Well	POWERS 29N-27HZ
Field	WELD COUNTY (KERR MCGEE)	Wellbore	POWERS 29N-27HZ AWP
Facility	SEC.27-T2N-R65W		

## TARGETS

Name	MD [ft]	TVD [ft]	North [ft]	East [ft]	Grid East [US ft]	Grid North [US ft]	Latitude	Longitude	Shape
SECTION 27 LINES		0.00	0.00	-30.23	3237030.25	1281754.37	40°06'13.316"N	104°39'09.454"W	polygon
POWERS 22-27 150' CIRCLE		7074.00	2818.72	-5.21	3237028.34	1284573.09	40°06'41.171"N	104°39'09.132"W	circle
POWERS 21-27 150' CIRCLE FOR 3N-27HZ		7075.00	4265.98	31.39	3237051.09	1286020.57	40°06'55.473"N	104°39'08.661"W	circle
POWERS 29N-27HZ BHL ON PLAT REV-1 (460' FNL & 1280' FWL)		7076.00	4311.83	-663.72	3236355.61	1286059.77	40°06'55.926"N	104°39'17.608"W	point
POWERS 29N-27HZ BHL REV-2 (460' FNL & 1360' FWL)		7076.00	4311.83	-583.72	3236435.60	1286060.53	40°06'55.926"N	104°39'16.578"W	point
POWERS 29N-27HZ BHL REV-3 (460' FNL & 1460' FWL)		7076.00	4311.83	-483.72	3236535.59	1286061.49	40°06'55.926"N	104°39'15.291"W	point
POWERS 29N-27HZ LAND BOX		7076.00	0.00	0.00	3237060.48	1281754.66	40°06'13.316"N	104°39'09.065"W	polygon
ROBERT POWERS USX X 27-19 100' RADIUS		7076.00	3411.43	-597.60	3236430.33	1285160.08	40°06'47.028"N	104°39'16.757"W	circle
SECTION 27 HARD LINES (460' SETBACKS)		7273.00	0.00	-30.23	3237030.25	1281754.37	40°06'13.316"N	104°39'09.454"W	polygon

## WELLPATH COMPOSITION - Ref Wellbore: POWERS 29N-27HZ AWP Ref Wellpath: POWERS 29N-27HZ AWP

Start MD [ft]	End MD [ft]	Positional Uncertainty Model	Log Name/Comment	Wellbore
17.00	1807.00	Generic gyro - continuous (Standard)	GYRODATA SURVEYS <117-1807>	POWERS 29N-27HZ AWP
1807.00	7508.00	NaviTrak (MAGCORR,IFR)	BHI MWD+IFR SURVEYS 8 3/4" HOLE <1890-7508>	POWERS 29N-27HZ AWP
7508.00	11521.00	NaviTrak (MAGCORR,IFR)	BHI MWD+IFR SURVEYS 6 1/8" HOLE <7563-11521>	POWERS 29N-27HZ AWP
11521.00	11576.00	Blind Drilling (std)	Projection to bit	POWERS 29N-27HZ AWP





# Actual Wellpath Report

POWERS 29N-27HZ AWP

Page 7 of 7



## REFERENCE WELLPATH IDENTIFICATION

Operator	KERR-MCGEE OIL & GAS ONSHORE LP	Slot	SLOT#02 POWERS 29N-27HZ (510'FSL & 1890'FWL, SEC.27)
Area	COLORADO	Well	POWERES 29N-27HZ
Field	WELD COUNTY (KERR MCGEE)	Wellbore	POWERS 29N-27HZ AWP
Facility	SEC.27-T2N-R65W		

## WELLPATH COMMENTS

MD [ft]	Inclination [°]	Azimuth [°]	TVD [ft]	Comment
17.00	0.000	223.100	17.00	TIE-ON
117.00	0.480	223.100	117.00	BEGIN GYRO SURVEYS
1807.00	0.370	229.290	1806.98	TIE-INTO GYRO SURVEYS
1890.00	0.350	244.670	1889.97	BEGIN BHI MWD+IFR SURVEYS
7542.00	87.460	1.969	7072.37	7" CASING POINT
11521.00	91.720	359.400	7064.69	LAST BHI MWD+IFR SURVEY
11576.00	91.720	359.400	7063.04	PROJECTION TO BIT