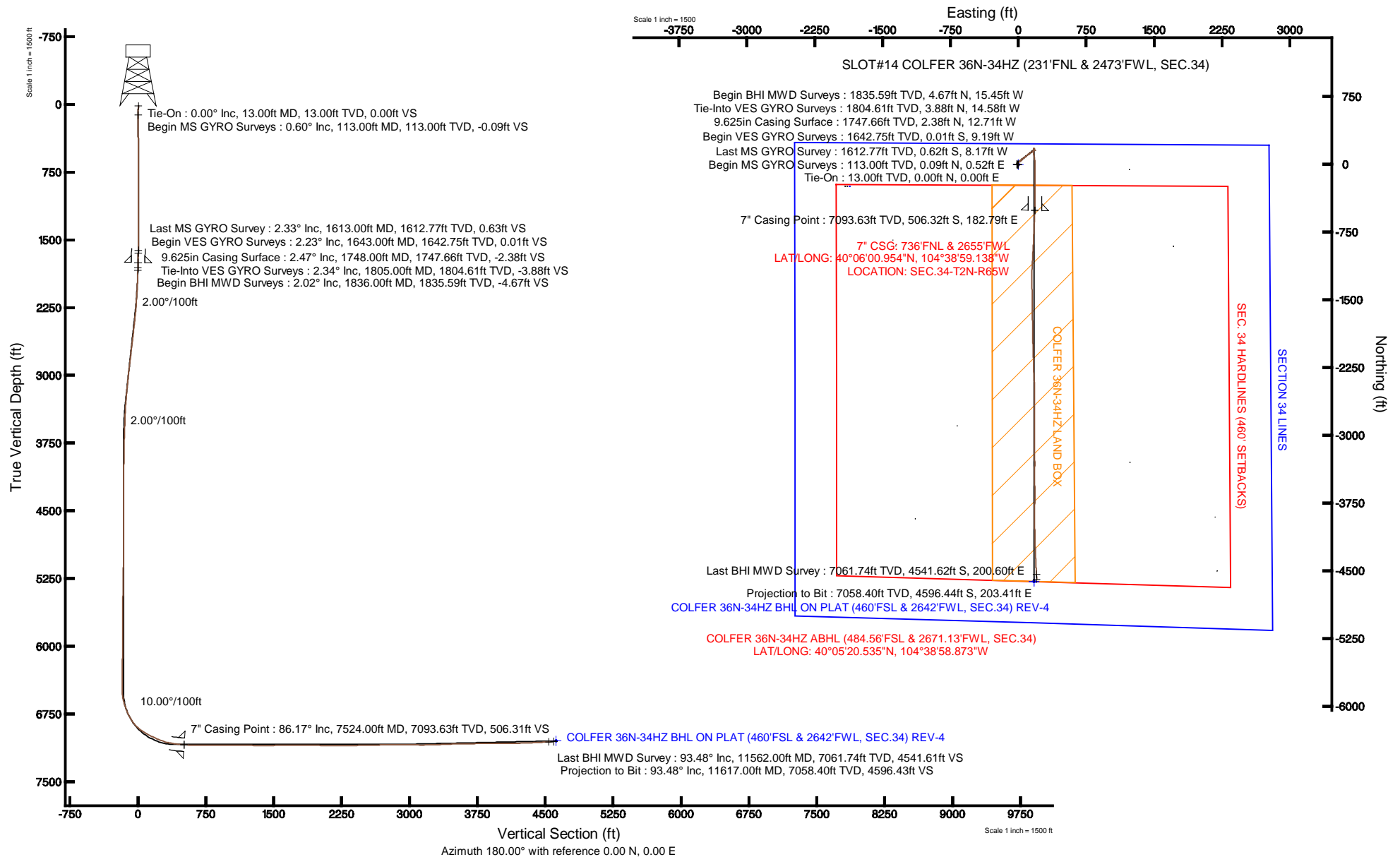


Location:	COLORADO	Slot:	SLOT#14 COLFER 36N-34HZ (231'FNL & 2473'FWL, SEC.34)
Field:	WELD COUNTY (KERR MCGEE)	Well:	COLFER 36N-34HZ
Facility:	SEC.34-T2N-R65W	Wellbore:	COLFER 36N-34HZ PWB





# Actual Wellpath Report

COLFER 36N-34HZ AWP

Page 1 of 7



## REFERENCE WELLPATH IDENTIFICATION

Operator	KERR-MCGEE OIL & GAS ONSHORE LP	Slot	SLOT#14 COLFER 36N-34HZ (231'FNL & 2473'FWL, SEC.34)
Area	COLORADO	Well	COLFER 36N-34HZ
Field	WELD COUNTY (KERR MCGEE)	Wellbore	COLFER 36N-34HZ AWB
Facility	SEC.34-T2N-R65W		

## REPORT SETUP INFORMATION

Projection System	NAD83 / Lambert Colorado SP, Northern Zone (501), US feet	Software System	WellArchitect® 3.0.2
North Reference	True	User	Wilsjef02
Scale	0.99996	Report Generated	4/11/2013 at 12:56:23
Convergence at slot	0.55° East	Database/Source file	WellArchitectDB/COLFER_36N-34HZ_AWB.xml

## WELLPATH LOCATION

	Local coordinates		Grid coordinates		Geographic coordinates	
	North[ft]	East[ft]	Easting[US ft]	Northing[US ft]	Latitude	Longitude
Slot Location	239.90	1868.79	3237656.18	1281015.78	40°06'05.958"N	104°39'01.490"W
Facility Reference Pt			3235789.83	1280758.14	40°06'03.588"N	104°39'25.539"W
Field Reference Pt			3197771.84	1268891.29	40°04'09.600"N	104°47'36.000"W

## WELLPATH DATUM

Calculation method	Minimum curvature	ENSIGN 145 (RKB) to Facility Vertical Datum	4977.00ft
Horizontal Reference Pt	Slot	ENSIGN 145 (RKB) to Mean Sea Level	4977.00ft
Vertical Reference Pt	ENSIGN 145 (RKB)	ENSIGN 145 (RKB) to Mud Line at Slot (SLOT#14 COLFER 36N-34HZ (231'FNL & 2473'FWL, SEC.34))	4977.00ft
MD Reference Pt	ENSIGN 145 (RKB)	Section Origin	N 0.00, E 0.00 ft
Field Vertical Reference	Mean Sea Level	Section Azimuth	177.47°



# Actual Wellpath Report

COLFER 36N-34HZ AWP

Page 2 of 7



## REFERENCE WELLPATH IDENTIFICATION

Operator	KERR-MCGEE OIL & GAS ONSHORE LP	Slot	SLOT#14 COLFER 36N-34HZ (231'FNL & 2473'FWL, SEC.34)
Area	COLORADO	Well	COLFER 36N-34HZ
Field	WELD COUNTY (KERR MCGEE)	Wellbore	COLFER 36N-34HZ AWB
Facility	SEC.34-T2N-R65W		

## WELLPATH DATA (143 stations) † = interpolated/extrapolated station

MD [ft]	Inclination [°]	Azimuth [°]	TVD [ft]	Vert Sect [ft]	North [ft]	East [ft]	Latitude	Longitude	DLS [°/100ft]	Comments
0.00†	0.000	80.070	0.00	0.00	0.00	0.00	40°06'05.958"N	104°39'01.490"W	0.00	
13.00	0.000	80.070	13.00	0.00	0.00	0.00	40°06'05.958"N	104°39'01.490"W	0.00	Tie-On
113.00	0.600	80.070	113.00	-0.07	0.09	0.52	40°06'05.959"N	104°39'01.483"W	0.60	Begin MS GYRO Surveys
213.00	0.510	90.670	212.99	-0.11	0.18	1.48	40°06'05.960"N	104°39'01.471"W	0.14	
313.00	0.520	95.270	312.99	-0.02	0.13	2.37	40°06'05.959"N	104°39'01.459"W	0.04	
413.00	0.580	118.090	412.98	0.30	-0.15	3.27	40°06'05.957"N	104°39'01.448"W	0.23	
513.00	0.630	122.990	512.98	0.87	-0.69	4.18	40°06'05.951"N	104°39'01.436"W	0.07	
613.00	0.430	127.300	612.98	1.43	-1.22	4.94	40°06'05.946"N	104°39'01.426"W	0.20	
713.00	0.370	154.210	712.97	1.97	-1.73	5.38	40°06'05.941"N	104°39'01.421"W	0.20	
813.00	0.380	193.150	812.97	2.59	-2.35	5.44	40°06'05.935"N	104°39'01.420"W	0.25	
913.00	0.360	201.840	912.97	3.19	-2.96	5.25	40°06'05.929"N	104°39'01.422"W	0.06	
1013.00	0.480	223.200	1012.97	3.77	-3.56	4.85	40°06'05.923"N	104°39'01.428"W	0.20	
1113.00	0.660	246.660	1112.96	4.27	-4.09	4.03	40°06'05.918"N	104°39'01.438"W	0.29	
1213.00	0.950	266.600	1212.95	4.48	-4.37	2.68	40°06'05.915"N	104°39'01.456"W	0.40	
1313.00	1.340	275.120	1312.93	4.34	-4.31	0.68	40°06'05.915"N	104°39'01.481"W	0.42	
1413.00	1.710	289.030	1412.90	3.64	-3.72	-1.89	40°06'05.921"N	104°39'01.514"W	0.52	
1513.00	2.000	296.910	1512.84	2.23	-2.45	-4.86	40°06'05.934"N	104°39'01.553"W	0.39	
1613.00	2.330	300.550	1612.77	0.26	-0.62	-8.17	40°06'05.952"N	104°39'01.595"W	0.36	Last MS GYRO Survey
1643.00	2.226	301.068	1642.75	-0.39	-0.01	-9.19	40°06'05.958"N	104°39'01.608"W	0.35	Begin VES GYRO Surveys
1673.00	2.263	303.195	1672.73	-1.06	0.61	-10.18	40°06'05.964"N	104°39'01.621"W	0.30	
1703.00	2.302	304.146	1702.70	-1.77	1.27	-11.18	40°06'05.971"N	104°39'01.634"W	0.18	
1733.00	2.455	306.726	1732.68	-2.53	2.00	-12.19	40°06'05.978"N	104°39'01.647"W	0.62	
1763.00	2.492	308.017	1762.65	-3.36	2.78	-13.22	40°06'05.985"N	104°39'01.660"W	0.22	
1793.00	2.319	309.106	1792.62	-4.19	3.57	-14.21	40°06'05.993"N	104°39'01.673"W	0.60	
1805.00	2.342	310.882	1804.61	-4.52	3.88	-14.58	40°06'05.996"N	104°39'01.678"W	0.63	Tie-Into VES GYRO Surveys
1836.00	2.020	313.890	1835.59	-5.35	4.67	-15.45	40°06'06.004"N	104°39'01.689"W	1.10	Begin BHI MWD Surveys
1868.00	1.840	325.160	1867.57	-6.19	5.49	-16.15	40°06'06.012"N	104°39'01.698"W	1.31	
1897.00	1.600	353.240	1896.56	-6.99	6.27	-16.47	40°06'06.020"N	104°39'01.702"W	2.99	
1992.00	3.900	37.530	1991.45	-10.79	10.15	-14.65	40°06'06.058"N	104°39'01.679"W	3.13	
2087.00	4.920	49.200	2086.17	-15.78	15.37	-9.60	40°06'06.110"N	104°39'01.614"W	1.42	
2182.00	6.350	51.970	2180.71	-21.36	21.27	-2.38	40°06'06.168"N	104°39'01.521"W	1.53	
2277.00	7.720	53.620	2274.99	-27.96	28.29	6.90	40°06'06.238"N	104°39'01.401"W	1.46	
2372.00	9.570	51.720	2368.91	-36.13	36.97	18.23	40°06'06.323"N	104°39'01.255"W	1.97	
2467.00	9.400	45.720	2462.61	-45.91	47.28	29.99	40°06'06.425"N	104°39'01.104"W	1.06	
2561.00	10.020	48.620	2555.27	-56.15	58.05	41.62	40°06'06.532"N	104°39'00.954"W	0.84	
2656.00	11.020	51.970	2648.67	-66.61	69.10	54.97	40°06'06.641"N	104°39'00.783"W	1.23	
2751.00	10.860	52.980	2741.94	-76.95	80.09	69.27	40°06'06.749"N	104°39'00.599"W	0.26	
2846.00	10.630	50.330	2835.28	-87.30	91.07	83.16	40°06'06.858"N	104°39'00.420"W	0.57	
2941.00	10.250	49.460	2928.70	-97.80	102.16	96.33	40°06'06.968"N	104°39'00.250"W	0.43	
3036.00	9.600	55.830	3022.28	-107.16	112.10	109.31	40°06'07.066"N	104°39'00.083"W	1.34	
3130.00	9.370	51.370	3115.00	-115.78	121.28	121.77	40°06'07.156"N	104°38'59.923"W	0.82	
3225.00	8.740	52.430	3208.82	-124.48	130.51	133.53	40°06'07.248"N	104°38'59.772"W	0.69	
3320.00	7.630	55.420	3302.85	-131.97	138.49	144.45	40°06'07.327"N	104°38'59.631"W	1.25	
3415.00	5.590	69.400	3397.22	-136.75	143.70	153.97	40°06'07.378"N	104°38'59.509"W	2.72	
3510.00	4.920	66.480	3491.82	-139.64	146.95	162.04	40°06'07.410"N	104°38'59.405"W	0.76	



# Actual Wellpath Report

COLFER 36N-34HZ AWP

Page 3 of 7



## REFERENCE WELLPATH IDENTIFICATION

Operator	KERR-MCGEE OIL & GAS ONSHORE LP	Slot	SLOT#14 COLFER 36N-34HZ (231'FNL & 2473'FWL, SEC.34)
Area	COLORADO	Well	COLFER 36N-34HZ
Field	WELD COUNTY (KERR MCGEE)	Wellbore	COLFER 36N-34HZ AWB
Facility	SEC.34-T2N-R65W		

## WELLPATH DATA (143 stations)

MD [ft]	Inclination [°]	Azimuth [°]	TVD [ft]	Vert Sect [ft]	North [ft]	East [ft]	Latitude	Longitude	DLS [°/100ft]	Comments
3605.00	4.010	54.570	3586.53	-142.91	150.50	168.48	40°06'07.445"N	104°38'59.322"W	1.36	
3700.00	3.820	58.620	3681.31	-146.24	154.07	173.89	40°06'07.481"N	104°38'59.252"W	0.35	
3795.00	3.010	56.280	3776.14	-149.05	157.11	178.67	40°06'07.511"N	104°38'59.191"W	0.86	
3889.00	1.770	83.670	3870.06	-150.43	158.64	182.16	40°06'07.526"N	104°38'59.146"W	1.76	
3984.00	1.210	43.500	3965.03	-151.22	159.53	184.31	40°06'07.534"N	104°38'59.118"W	1.21	
4079.00	1.940	305.780	4060.00	-152.92	161.19	183.70	40°06'07.551"N	104°38'59.126"W	2.55	
4174.00	1.410	307.640	4154.96	-154.67	162.85	181.47	40°06'07.567"N	104°38'59.155"W	0.56	
4269.00	1.450	291.190	4249.93	-155.90	164.00	179.42	40°06'07.579"N	104°38'59.181"W	0.43	
4364.00	1.510	274.200	4344.90	-156.53	164.52	177.05	40°06'07.584"N	104°38'59.212"W	0.46	
4458.00	1.100	204.470	4438.88	-155.88	163.79	175.44	40°06'07.577"N	104°38'59.232"W	1.63	
4553.00	0.680	187.260	4533.87	-154.51	162.40	174.99	40°06'07.563"N	104°38'59.238"W	0.52	
4648.00	0.210	117.240	4628.87	-153.87	161.76	175.08	40°06'07.557"N	104°38'59.237"W	0.67	
4743.00	0.370	43.040	4723.87	-153.99	161.91	175.44	40°06'07.558"N	104°38'59.232"W	0.39	
4838.00	0.190	69.610	4818.87	-154.26	162.19	175.80	40°06'07.561"N	104°38'59.228"W	0.23	
4933.00	0.400	9.110	4913.87	-154.63	162.57	176.00	40°06'07.565"N	104°38'59.225"W	0.37	
5028.00	0.860	1.140	5008.86	-155.67	163.61	176.06	40°06'07.575"N	104°38'59.224"W	0.49	
5123.00	0.730	318.980	5103.85	-156.85	164.78	175.68	40°06'07.586"N	104°38'59.229"W	0.62	
5217.00	1.450	6.910	5197.84	-158.49	166.41	175.43	40°06'07.603"N	104°38'59.232"W	1.17	
5312.00	1.080	21.770	5292.81	-160.50	168.44	175.91	40°06'07.623"N	104°38'59.226"W	0.52	
5407.00	0.430	44.410	5387.80	-161.55	169.52	176.49	40°06'07.633"N	104°38'59.219"W	0.74	
5502.00	0.380	22.250	5482.80	-162.08	170.07	176.86	40°06'07.639"N	104°38'59.214"W	0.17	
5597.00	0.500	44.680	5577.80	-162.65	170.66	177.27	40°06'07.644"N	104°38'59.209"W	0.22	
5692.00	0.540	33.430	5672.80	-163.30	171.32	177.81	40°06'07.651"N	104°38'59.202"W	0.12	
5787.00	0.360	350.520	5767.79	-163.95	171.99	178.00	40°06'07.658"N	104°38'59.199"W	0.39	
5881.00	0.430	26.310	5861.79	-164.56	172.60	178.11	40°06'07.664"N	104°38'59.198"W	0.27	
5976.00	0.350	0.750	5956.79	-165.16	173.21	178.27	40°06'07.670"N	104°38'59.196"W	0.20	
6071.00	0.490	339.750	6051.79	-165.83	173.88	178.14	40°06'07.676"N	104°38'59.198"W	0.22	
6166.00	1.270	318.750	6146.77	-167.04	175.05	177.30	40°06'07.688"N	104°38'59.208"W	0.88	
6261.00	1.970	321.750	6241.74	-169.19	177.13	175.60	40°06'07.708"N	104°38'59.230"W	0.74	
6356.00	1.450	291.820	6336.70	-171.01	178.86	173.47	40°06'07.725"N	104°38'59.258"W	1.07	
6450.00	0.950	231.270	6430.68	-171.04	178.81	171.76	40°06'07.725"N	104°38'59.280"W	1.37	
6544.00	3.510	197.450	6524.60	-167.88	175.58	170.29	40°06'07.693"N	104°38'59.299"W	2.95	
6591.00	9.890	184.170	6571.26	-162.51	170.17	169.56	40°06'07.640"N	104°38'59.308"W	13.88	
6639.00	14.930	182.170	6618.12	-152.25	159.88	169.03	40°06'07.538"N	104°38'59.315"W	10.54	
6687.00	17.960	181.970	6664.15	-138.70	146.30	168.54	40°06'07.404"N	104°38'59.321"W	6.31	
6734.00	21.660	172.830	6708.37	-122.83	130.44	169.37	40°06'07.247"N	104°38'59.310"W	10.25	
6781.00	23.750	171.590	6751.73	-104.76	112.47	171.84	40°06'07.069"N	104°38'59.279"W	4.56	
6829.00	29.550	171.180	6794.61	-83.36	91.19	175.07	40°06'06.859"N	104°38'59.237"W	12.09	
6876.00	35.940	170.910	6834.12	-58.12	66.10	179.03	40°06'06.611"N	104°38'59.186"W	13.60	
6924.00	42.050	173.930	6871.41	-28.05	36.17	182.96	40°06'06.315"N	104°38'59.136"W	13.33	
6971.00	47.810	178.990	6904.69	5.11	3.07	184.93	40°06'05.988"N	104°38'59.110"W	14.41	
7018.00	53.940	181.140	6934.33	41.51	-33.37	184.86	40°06'05.628"N	104°38'59.111"W	13.52	
7065.00	58.720	180.330	6960.38	80.55	-72.47	184.37	40°06'05.242"N	104°38'59.117"W	10.27	
7113.00	62.330	179.840	6984.00	122.29	-114.25	184.31	40°06'04.829"N	104°38'59.118"W	7.57	
7160.00	63.800	179.560	7005.29	164.16	-156.15	184.53	40°06'04.415"N	104°38'59.115"W	3.17	



# Actual Wellpath Report

COLFER 36N-34HZ AWP

Page 4 of 7



## REFERENCE WELLPATH IDENTIFICATION

Operator	KERR-MCGEE OIL & GAS ONSHORE LP	Slot	SLOT#14 COLFER 36N-34HZ (231'FNL & 2473'FWL, SEC.34)
Area	COLORADO	Well	COLFER 36N-34HZ
Field	WELD COUNTY (KERR MCGEE)	Wellbore	COLFER 36N-34HZ AWB
Facility	SEC.34-T2N-R65W		

## WELLPATH DATA (143 stations) † = interpolated/extrapolated station

MD [ft]	Inclination [°]	Azimuth [°]	TVD [ft]	Vert Sect [ft]	North [ft]	East [ft]	Latitude	Longitude	DLS [°/100ft]	Comments
7208.00	66.440	180.160	7025.48	207.66	-199.69	184.63	40°06'03.985"N	104°38'59.114"W	5.62	
7255.00	69.100	179.360	7043.26	251.13	-243.19	184.82	40°06'03.555"N	104°38'59.112"W	5.87	
7303.00	73.570	179.840	7058.62	296.56	-288.66	185.13	40°06'03.105"N	104°38'59.108"W	9.36	
7350.00	76.790	180.120	7070.64	341.94	-334.09	185.15	40°06'02.657"N	104°38'59.107"W	6.88	
7398.00	80.440	180.180	7080.11	388.94	-381.13	185.03	40°06'02.192"N	104°38'59.109"W	7.61	
7429.00	82.460	180.440	7084.72	419.56	-411.79	184.86	40°06'01.889"N	104°38'59.111"W	6.57	
7461.00	84.050	181.080	7088.48	451.28	-443.56	184.44	40°06'01.575"N	104°38'59.117"W	5.35	
7483.00	85.180	181.340	7090.54	473.14	-465.46	183.98	40°06'01.358"N	104°38'59.123"W	5.27	
7524.00†	86.172	181.978	7093.63	513.91	-506.32	182.79	40°06'00.954"N	104°38'59.138"W	2.87	7" Casing Point
7597.00	87.940	183.110	7097.38	586.52	-579.15	179.56	40°06'00.235"N	104°38'59.179"W	2.87	
7692.00	90.400	181.830	7098.76	681.14	-674.04	175.46	40°05'59.297"N	104°38'59.232"W	2.92	
7787.00	89.400	182.290	7098.92	775.84	-768.98	172.05	40°05'58.359"N	104°38'59.276"W	1.16	
7882.00	90.060	182.630	7099.37	870.47	-863.89	167.97	40°05'57.421"N	104°38'59.329"W	0.78	
7976.00	90.610	183.890	7098.82	963.99	-957.74	162.63	40°05'56.494"N	104°38'59.397"W	1.46	
8071.00	89.930	182.520	7098.37	1058.51	-1052.58	157.31	40°05'55.556"N	104°38'59.466"W	1.61	
8166.00	89.170	183.120	7099.12	1153.09	-1147.46	152.64	40°05'54.619"N	104°38'59.526"W	1.02	
8261.00	88.740	179.720	7100.85	1247.83	-1242.41	150.29	40°05'53.680"N	104°38'59.556"W	3.61	
8356.00	89.380	179.230	7102.41	1342.76	-1337.39	151.16	40°05'52.742"N	104°38'59.545"W	0.85	
8451.00	90.730	178.990	7102.32	1437.72	-1432.37	152.63	40°05'51.803"N	104°38'59.526"W	1.44	
8545.00	91.540	179.650	7100.46	1531.65	-1526.35	153.75	40°05'50.874"N	104°38'59.512"W	1.11	
8640.00	90.490	178.580	7098.78	1626.60	-1621.32	155.22	40°05'49.936"N	104°38'59.493"W	1.58	
8735.00	90.640	179.540	7097.84	1721.55	-1716.30	156.77	40°05'48.997"N	104°38'59.473"W	1.02	
8830.00	89.750	178.750	7097.52	1816.51	-1811.29	158.19	40°05'48.059"N	104°38'59.454"W	1.25	
8925.00	89.100	178.970	7098.47	1911.48	-1906.26	160.08	40°05'47.120"N	104°38'59.430"W	0.72	
9020.00	88.040	177.860	7100.84	2006.43	-2001.19	162.71	40°05'46.182"N	104°38'59.396"W	1.62	
9115.00	88.730	178.560	7103.52	2101.38	-2096.11	165.67	40°05'45.244"N	104°38'59.358"W	1.03	
9210.00	90.030	178.420	7104.54	2196.36	-2191.07	168.18	40°05'44.306"N	104°38'59.326"W	1.38	
9304.00	91.040	177.610	7103.67	2290.35	-2285.01	171.43	40°05'43.377"N	104°38'59.284"W	1.38	
9399.00	90.950	177.170	7102.02	2385.34	-2379.89	175.76	40°05'42.440"N	104°38'59.228"W	0.47	
9494.00	91.220	179.250	7100.22	2480.31	-2474.82	178.73	40°05'41.501"N	104°38'59.190"W	2.21	
9589.00	91.470	179.770	7097.99	2575.22	-2569.79	179.54	40°05'40.563"N	104°38'59.180"W	0.61	
9684.00	90.700	179.950	7096.19	2670.12	-2664.78	179.77	40°05'39.624"N	104°38'59.177"W	0.83	
9778.00	90.860	180.170	7094.91	2764.01	-2758.77	179.67	40°05'38.695"N	104°38'59.178"W	0.29	
9873.00	89.870	181.070	7094.30	2858.87	-2853.76	178.64	40°05'37.757"N	104°38'59.191"W	1.41	
9968.00	89.780	180.020	7094.60	2953.73	-2948.75	177.74	40°05'36.818"N	104°38'59.203"W	1.11	
10063.00	89.130	179.720	7095.50	3048.64	-3043.75	177.95	40°05'35.879"N	104°38'59.200"W	0.75	
10158.00	90.060	178.630	7096.17	3143.59	-3138.73	179.32	40°05'34.941"N	104°38'59.183"W	1.51	
10253.00	91.140	178.980	7095.18	3238.56	-3233.70	181.30	40°05'34.002"N	104°38'59.157"W	1.20	
10348.00	92.610	180.290	7092.07	3333.43	-3328.65	181.91	40°05'33.064"N	104°38'59.149"W	2.07	
10443.00	92.800	180.190	7087.58	3428.22	-3423.54	181.51	40°05'32.126"N	104°38'59.154"W	0.23	
10537.00	91.570	179.880	7084.00	3522.05	-3517.47	181.45	40°05'31.198"N	104°38'59.155"W	1.35	
10632.00	90.460	178.630	7082.32	3616.99	-3612.44	182.69	40°05'30.259"N	104°38'59.139"W	1.76	
10727.00	90.740	180.910	7081.32	3711.90	-3707.43	183.07	40°05'29.321"N	104°38'59.134"W	2.42	
10822.00	91.450	181.390	7079.51	3806.69	-3802.39	181.16	40°05'28.382"N	104°38'59.159"W	0.90	
10917.00	90.180	179.590	7078.16	3901.54	-3897.37	180.35	40°05'27.444"N	104°38'59.169"W	2.32	



# Actual Wellpath Report

COLFER 36N-34HZ AWP

Page 5 of 7



## REFERENCE WELLPATH IDENTIFICATION

Operator	KERR-MCGEE OIL & GAS ONSHORE LP	Slot	SLOT#14 COLFER 36N-34HZ (231'FNL & 2473'FWL, SEC.34)
Area	COLORADO	Well	COLFER 36N-34HZ
Field	WELD COUNTY (KERR MCGEE)	Wellbore	COLFER 36N-34HZ AWB
Facility	SEC.34-T2N-R65W		

## WELLPATH DATA (143 stations)

MD [ft]	Inclination [°]	Azimuth [°]	TVD [ft]	Vert Sect [ft]	North [ft]	East [ft]	Latitude	Longitude	DLS [°/100ft]	Comments
11012.00	90.060	179.550	7077.96	3996.47	-3992.37	181.07	40°05'26.505"N	104°38'59.160"W	0.13	
11107.00	89.780	178.530	7078.09	4091.44	-4087.36	182.66	40°05'25.566"N	104°38'59.140"W	1.11	
11201.00	91.200	178.750	7077.28	4185.41	-4181.32	184.89	40°05'24.637"N	104°38'59.111"W	1.53	
11296.00	92.250	177.180	7074.43	4280.36	-4276.22	188.26	40°05'23.700"N	104°38'59.068"W	1.99	
11391.00	92.340	177.770	7070.62	4375.28	-4371.05	192.44	40°05'22.763"N	104°38'59.014"W	0.63	
11486.00	93.110	177.070	7066.10	4470.17	-4465.84	196.71	40°05'21.826"N	104°38'58.959"W	1.09	
11562.00	93.480	177.060	7061.74	4546.05	-4541.62	200.60	40°05'21.077"N	104°38'58.909"W	0.49	Last BHI MWD Survey
11617.00	93.480	177.060	7058.40	4600.94	-4596.44	203.41	40°05'20.535"N	104°38'58.873"W	0.00	Projection to Bit

## HOLE & CASING SECTIONS - Ref Wellbore: COLFER 36N-34HZ AWB Ref Wellpath: COLFER 36N-34HZ AWP

String/Diameter	Start MD [ft]	End MD [ft]	Interval [ft]	Start TVD [ft]	End TVD [ft]	Start N/S [ft]	Start E/W [ft]	End N/S [ft]	End E/W [ft]
12.25in Open Hole	13.00	1748.00	1735.00	13.00	1747.66	0.00	0.00	2.38	-12.71
9.625in Casing Surface	13.00	1748.00	1735.00	13.00	1747.66	0.00	0.00	2.38	-12.71
8.75in Open Hole	1748.00	7535.00	5787.00	1747.66	7094.34	2.38	-12.71	-517.29	182.40
7in Casing Intermediate	13.00	7524.00	7511.00	13.00	7093.63	0.00	0.00	-506.32	182.79
6.125in Open Hole	7524.00	11617.00	4093.00	7093.63	7058.40	-506.32	182.79	-4596.44	203.41



# Actual Wellpath Report

COLFER 36N-34HZ AWP

Page 6 of 7



## REFERENCE WELLPATH IDENTIFICATION

Operator	KERR-MCGEE OIL & GAS ONSHORE LP	Slot	SLOT#14 COLFER 36N-34HZ (231'FNL & 2473'FWL, SEC.34)
Area	COLORADO	Well	COLFER 36N-34HZ
Field	WELD COUNTY (KERR MCGEE)	Wellbore	COLFER 36N-34HZ AWB
Facility	SEC.34-T2N-R65W		

## TARGETS

Name	MD [ft]	TVD [ft]	North [ft]	East [ft]	Grid East [US ft]	Grid North [US ft]	Latitude	Longitude	Shape
COLFER PAD SECTION LINES		19.00	-239.65	-1868.73	3235789.91	1280758.25	40°06'03.589"N	104°39'25.538"W	polygon
COLFER 36N-34HZ BHL ON PLAT (460'FSL & 2637'FWL, SEC.34) REV-1		7047.00	-4621.06	169.28	3237869.71	1276396.75	40°05'20.292"N	104°38'59.312"W	point
COLFER 36N-34HZ LAND BOX		7047.00	0.00	0.00	3237656.18	1281015.78	40°06'05.958"N	104°39'01.490"W	polygon
COLFER PAD HARDLINES (460' SETBACKS)		7047.00	-239.65	-1868.73	3235789.91	1280758.25	40°06'03.589"N	104°39'25.538"W	polygon
COLFER 36N-34HZ BHL ON PLAT (460'FSL & 2642'FWL, SEC.34) REV-4		7051.00	-4621.00	174.28	3237874.71	1276396.86	40°05'20.293"N	104°38'59.248"W	point
COLFER 36N-34HZ BHL ON PLAT (460'FSL & 2637'FWL, SEC.34) REV-2		7081.00	-4621.06	169.28	3237869.71	1276396.75	40°05'20.292"N	104°38'59.312"W	point
COLFER 36N-34HZ BHL ON PLAT (460'FSL & 2642'FWL, SEC.34) REV-3		7081.00	-4621.00	174.28	3237874.71	1276396.86	40°05'20.293"N	104°38'59.248"W	point

## WELLPATH COMPOSITION - Ref Wellbore: COLFER 36N-34HZ AWB Ref Wellpath: COLFER 36N-34HZ AWP

Start MD [ft]	End MD [ft]	Positional Uncertainty Model	Log Name/Comment	Wellbore
13.00	1613.00	Generic gyro - continuous (Standard)	MS GYRO SURVEYS <113-1613>	COLFER 36N-34HZ AWB
1613.00	1805.00	Generic gyro - continuous (Standard)	VES GYRO SURVEYS <1643-1805>	COLFER 36N-34HZ AWB
1805.00	7483.00	NaviTrak (MagCorr)	BHI MWD SURVEYS 8 3/4" HOLE <1836-7483>	COLFER 36N-34HZ AWB
7483.00	11562.00	OnTrak (MagCorr)	BHI MWD SURVEYS 6 1/8" HOLE <7597-11562>	COLFER 36N-34HZ AWB
11562.00	11617.00	Blind Drilling (std)	Projection to bit	COLFER 36N-34HZ AWB





# Actual Wellpath Report

COLFER 36N-34HZ AWP

Page 7 of 7



## REFERENCE WELLPATH IDENTIFICATION

Operator	KERR-MCGEE OIL & GAS ONSHORE LP	Slot	SLOT#14 COLFER 36N-34HZ (231'FNL & 2473'FWL, SEC.34)
Area	COLORADO	Well	COLFER 36N-34HZ
Field	WELD COUNTY (KERR MCGEE)	Wellbore	COLFER 36N-34HZ AWB
Facility	SEC.34-T2N-R65W		

## WELLPATH COMMENTS

MD [ft]	Inclination [°]	Azimuth [°]	TVD [ft]	Comment
13.00	0.000	80.070	13.00	Tie-On
113.00	0.600	80.070	113.00	Begin MS GYRO Surveys
1613.00	2.330	300.550	1612.77	Last MS GYRO Survey
1643.00	2.226	301.068	1642.75	Begin VES GYRO Surveys
1805.00	2.342	310.882	1804.61	Tie-Into VES GYRO Surveys
1836.00	2.020	313.890	1835.59	Begin BHI MWD Surveys
7524.00	86.172	181.978	7093.63	7" Casing Point
11562.00	93.480	177.060	7061.74	Last BHI MWD Survey
11617.00	93.480	177.060	7058.40	Projection to Bit