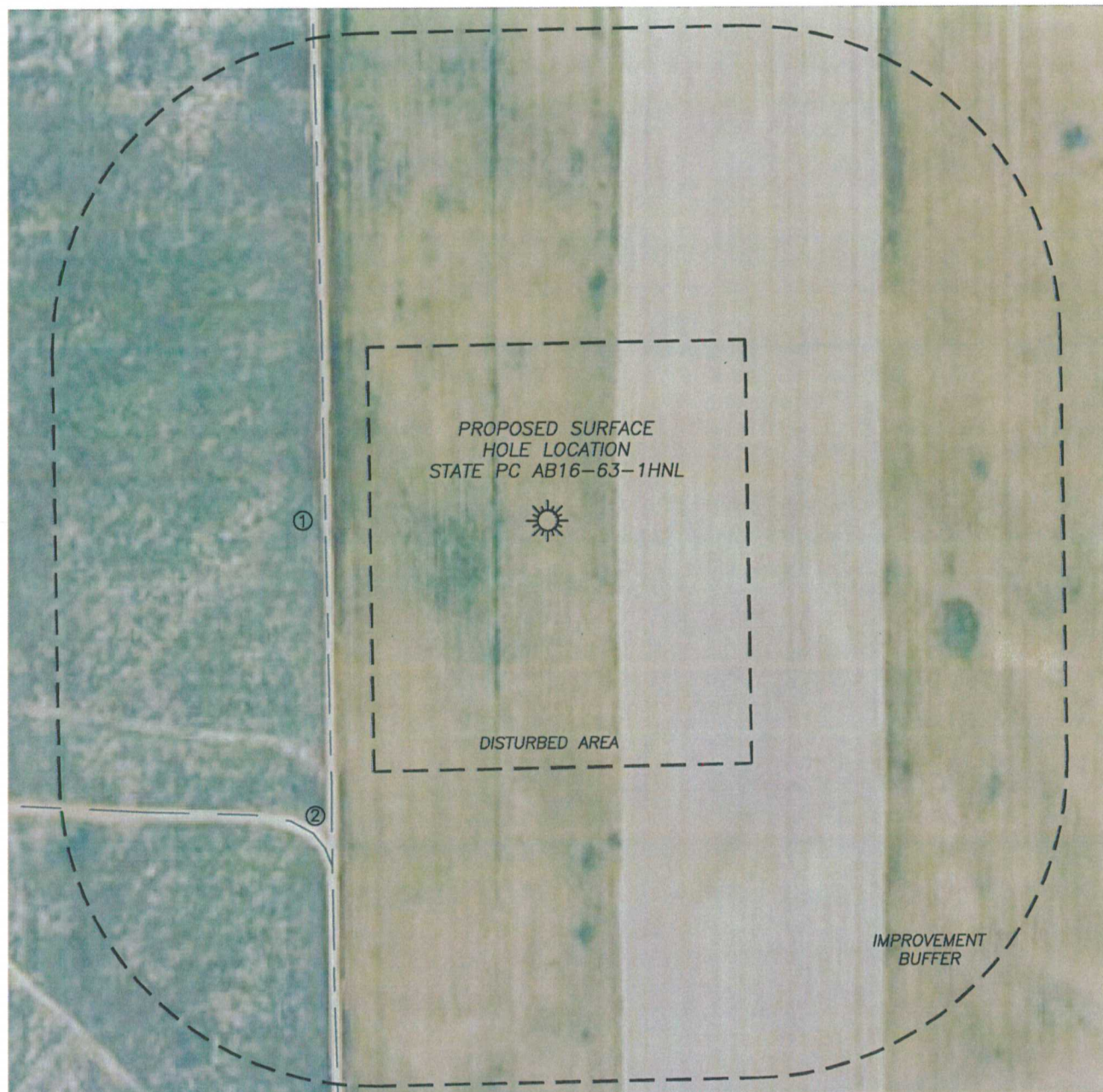


DALEY LAND SURVEYING, INC. PARKER, CO. 80134 303 953 9841

LOCATION DRAWING
STATE PC AB16-63-1HNL

SECTION 16, TOWNSHIP 7 NORTH, RANGE 64 WEST OF THE 6TH PRINCIPAL MERIDIAN



IMPROVEMENTS

1. FIELD ROAD: 281'± W
2. WELL ACC. RD.: 495'± SW

DISTANCE TO NEAREST:

BUILDING: 3300'± SW
PUBLIC ROAD: 980'± S
ABOVE GRND UTILITY: 3505'± SW
RAILROAD: 5280'+
PROP. LINE: 250'± W

