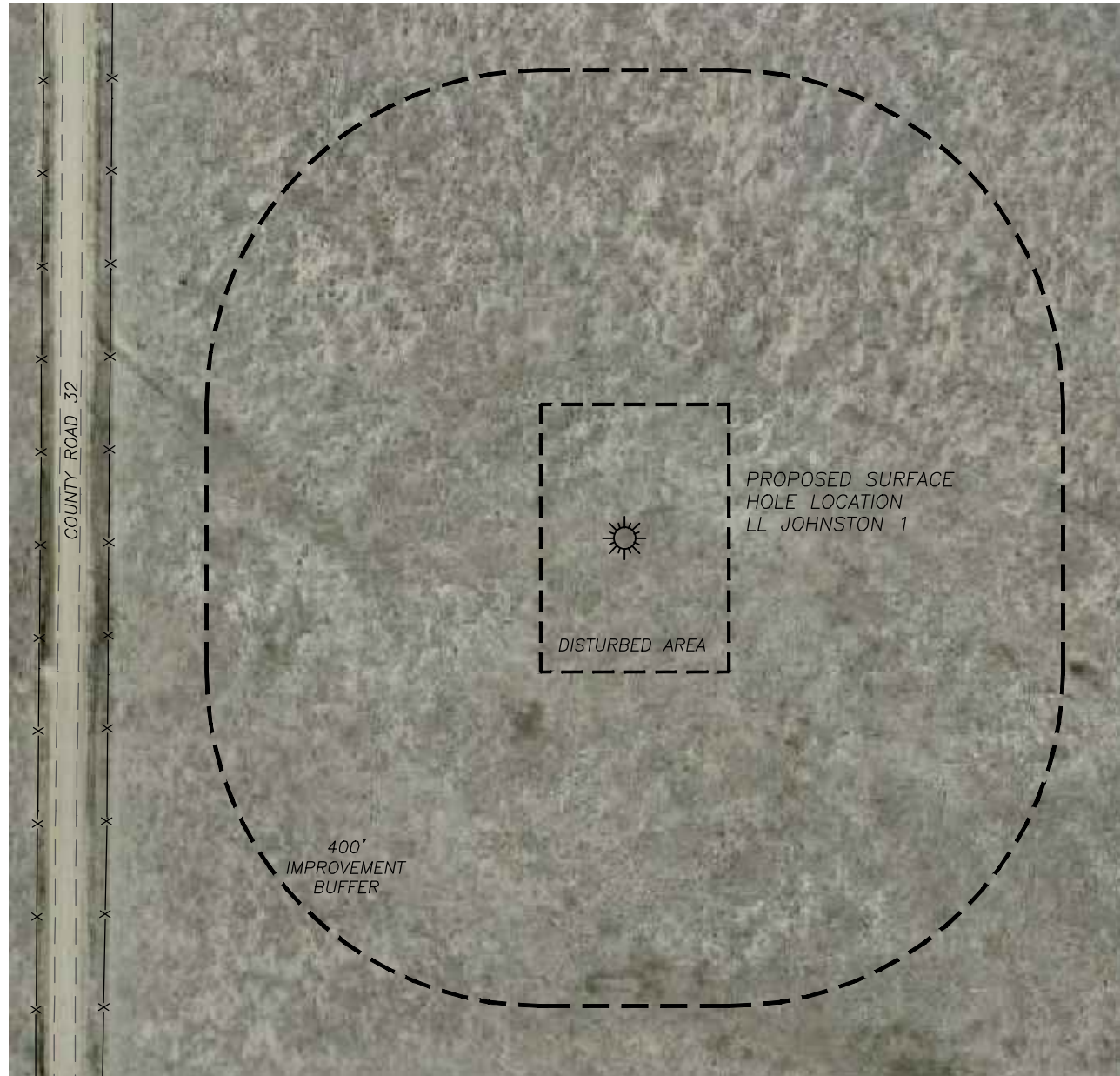


## LOCATION DRAWING LL JOHNSTON 1

SECTION 29, TOWNSHIP 17 SOUTH, RANGE 54 WEST OF THE 6TH PRINCIPAL MERIDIAN

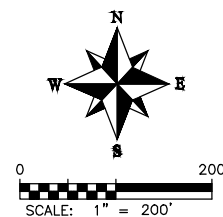


### IMPROVEMENTS

- THERE ARE NO IMPROVEMENTS  
WITHIN THE 400' BUFFER

### DISTANCE TO NEAREST:

BUILDING: 5280'+  
PUBLIC ROAD: 652'± W  
ABOVE GRND UTILITY: 5280'+  
RAILROAD: 5280'+  
PROP. LINE: 660'± W



### LEGEND

- ◆ FOUND MONUMENT  
AS DESCRIBED
- ☀ PROPOSED WELL
- ⊙ EXISTING WELL
- BOTTOM HOLE
- ◇ ABANDONED WELL
- ◆ CALCULATED POSITION