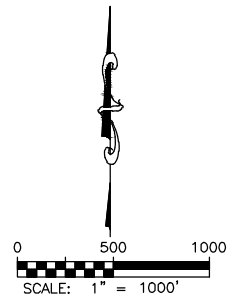
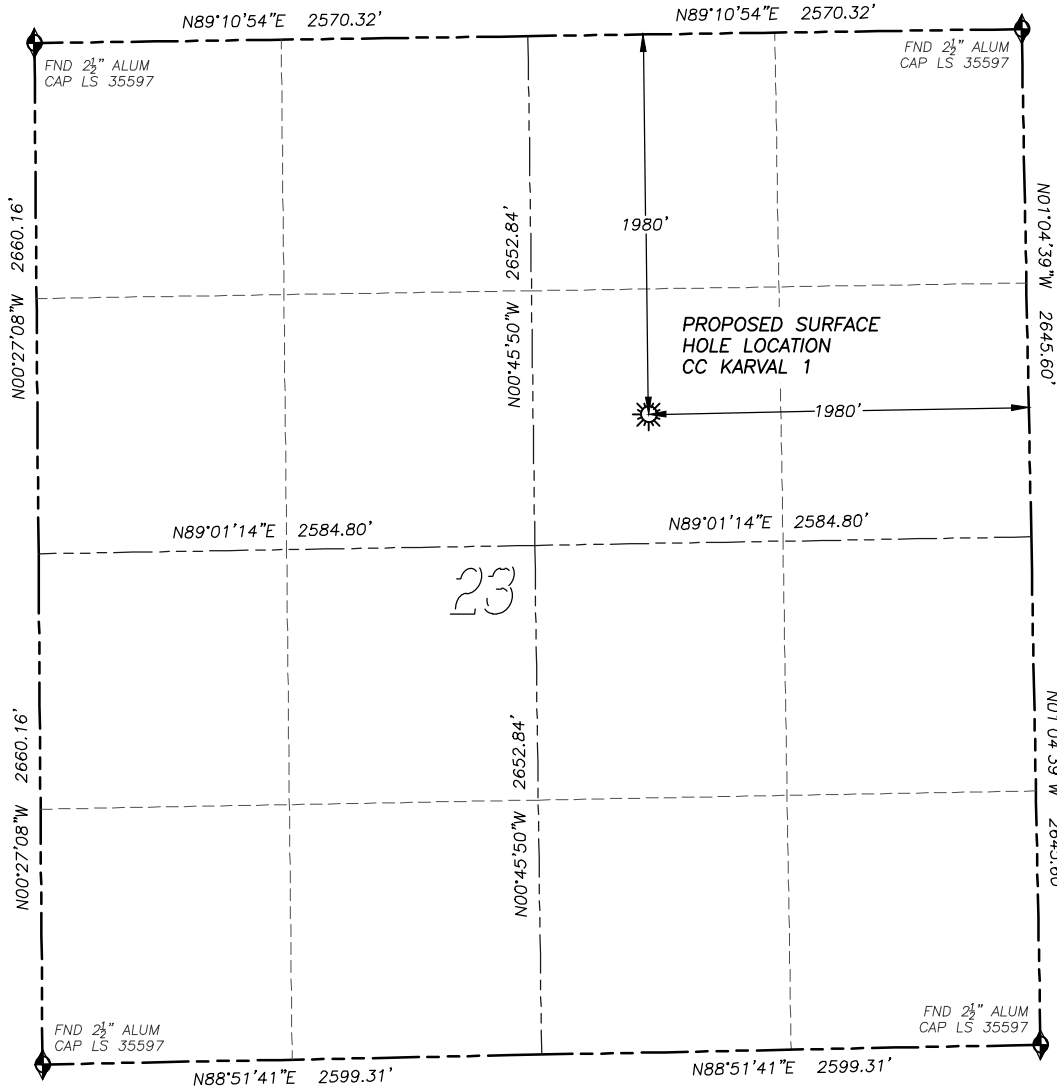


# WELL LOCATION CERTIFICATE CC KARVAL 1

SECTION 23, TOWNSHIP 17 SOUTH, RANGE 53 WEST OF THE 6TH PRINCIPAL MERIDIAN

**LEGEND**

- ◆ FOUND MONUMENT AS DESCRIBED
- ☀ PROPOSED WELL
- EXISTING WELL
- BOTTOM HOLE
- ⊗ ABANDONED WELL
- ◇ CALCULATED POSITION

**NAD 83 LATITUDE AND LONGITUDE****CC KARVAL 1 SURFACE HOLE:**

LATITUDE: N38.56219°  
 LONGITUDE: W103.30918°  
 ELEVATION: 4615'  
 FOOTAGE: 1980' FNL, 1980' FEL  
 PDOP: 1.2  
 QTR/QTR: SW4/NE4  
 PROP LINE: 1980'± NORTH  
 GPS OPERATOR: SCOTT ESTABROOKS

IN ACCORDANCE WITH A REQUEST FROM AURORA POWER RESOURCES INC., DALEY LAND SURVEYING, INC. HAS DETERMINED THE SURFACE LOCATION OF THE CC KARVAL 1 WELL TO BE 1980' FNL, 1980' FEL, AS MEASURED AT NINETY (90) DEGREES FROM THE SECTION LINES OF SECTION 23, TOWNSHIP 17 SOUTH, RANGE 53 WEST OF THE 6TH PRINCIPAL MERIDIAN, LINCOLN COUNTY, COLORADO.

I HEREBY CERTIFY THAT THIS WELL LOCATION CERTIFICATE WAS PREPARED BY ME OR UNDER MY DIRECT SUPERVISION, THAT THE WORK WAS COMPLETED ON 3/20/2013 FOR AND ON BEHALF OF AURORA POWER RESOURCES INC., AND THAT THIS MAP DOES NOT REPRESENT A BOUNDARY SURVEY, IT IS NOT A LAND SURVEY PLAT OR AN IMPROVEMENT SURVEY PLAT AND IT IS NOT TO BE RELIED UPON FOR THE ESTABLISHMENT OF FENCE, BUILDING OR OTHER FUTURE IMPROVEMENT LINES.

**NOTES:**

- 1) BEARINGS FOR THIS MAP ARE ASSUMED AND BASED UPON GPS OBSERVATIONS MADE BETWEEN MONUMENTS LOCATED AT THE NORTHEAST CORNER AND NORTHWEST CORNER OF SECTION 23, T.17S., R.53W.
- 2) HORIZONTAL DATUM IS NAD83.
- 3) VERTICAL DATUM IS NAVD88 AND ORIGINATES FROM THE LOCAL C.O.R.S. NETWORK, UTILIZING THE GEOID09 MODEL.
- 4) SEE LOCATION DRAWING FOR VISIBLE IMPROVEMENTS WITHIN 400' OF PROPOSED DISTURBED AREA.
- 5) SURFACE USE: RANGELAND.

**NEAREST EXISTING WELL:**  
 THERE ARE NO EXISTING  
 WELLS IN THIS SECTION



FOR AND ON BEHALF OF  
 DALEY LAND SURVEYING INC.,  
 Robert Daley, PLS 35597