



Corporate Office

1775 Sherman Street, #3000
Denver, Colorado 80203
303.860.5800
www.pdce.com

April 10, 2013

State of Colorado, Oil & Gas Conservation Commission
Attn: Matt Lepore
1120 Lincoln Street, Suite 801
Denver, CO 80203

Re: **Letter to the Director, Rule 318A.e.**
Alm 33V-234
NENE, Section 33 T7N R65W
Weld County, Colorado

Dear Director:

PDC Energy ("PDC") hereby certifies to the Director that PDC holds all minerals in the proposed 320 acre wellbore spacing unit consisting of the N2 of Section 33 in T7N R65W; therefore, no 30-day notice is needed to owners in the proposed wellbore spacing unit. This horizontal well location crosses existing unit boundaries and requires the formation of the proposed unit. PDC hereby requests the Director to approve the well.

If you should have any questions or concerns regarding this permit, please contact the undersigned at (303) 860-5800.

Sincerely,

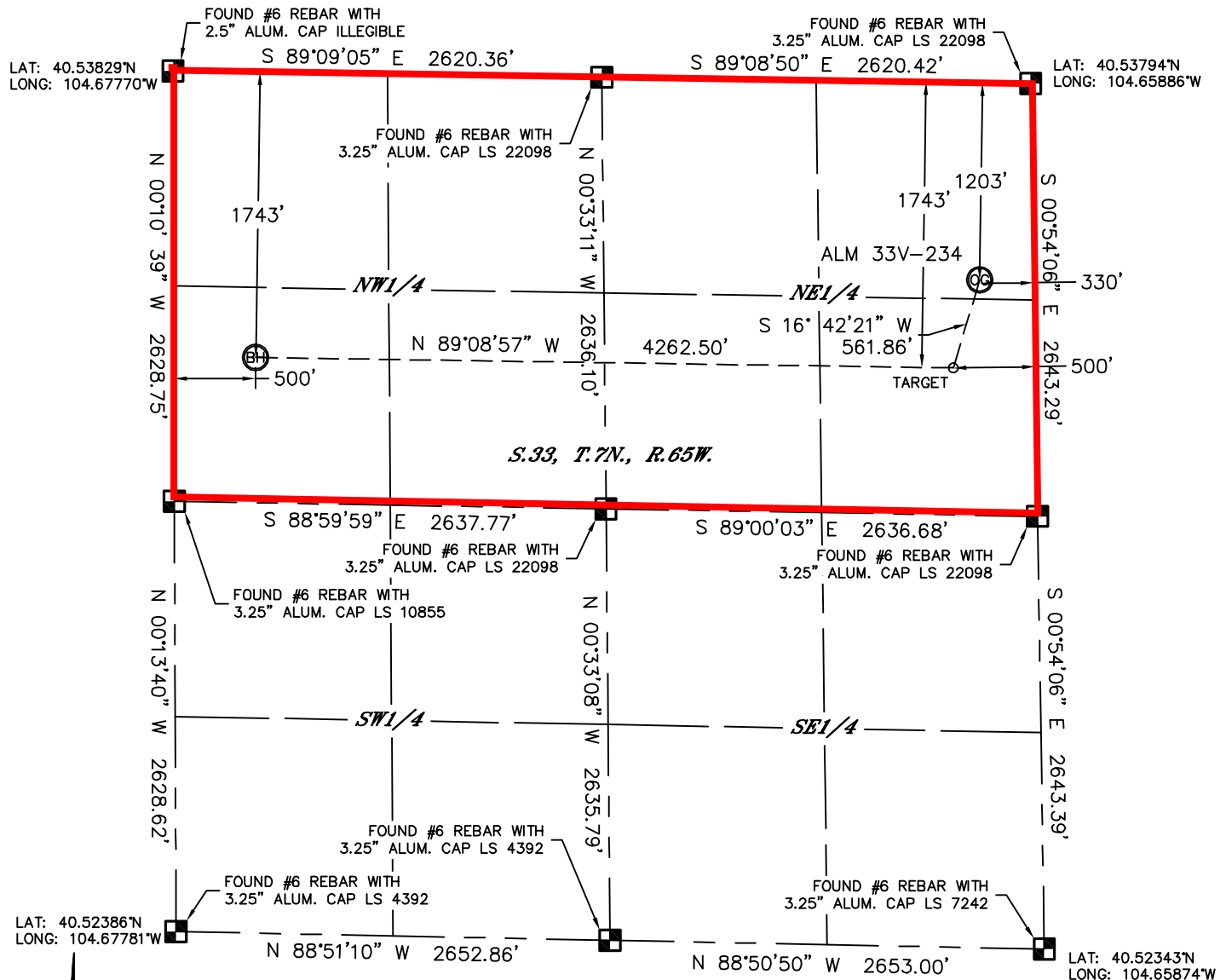
A handwritten signature in blue ink, appearing to read "Liz Lindow", written over the word "Sincerely,".

Liz Lindow
Regulatory Analyst
PDC Energy, Inc.

WELL LOCATION CERTIFICATE

THIS MAP DOES NOT REPRESENT A BOUNDARY SURVEY

SECTION: 33
TOWNSHIP: 7N
RANGE: 65W



In accordance with a request from Thomas Bragg with PDC Energy Lat40', Inc. has determined the surface location of the ALM 33V-234 to be 1203' from the NORTH line and 330' from the EAST line and the bottom hole to be 1743' from the NORTH line and 500' from the WEST line as measured at right angles from the section lines of Section 33, Township 7 North, Range 65 West of the Sixth Principal Meridian, County of Weld, State of Colorado.

I hereby state that this Well Location Certificate was prepared by me, or under my direct supervision, that the fieldwork was completed on 1/28/2013, for and on behalf of PDC Energy. That this is not a Land Survey Plat or an Improvement Survey Plat, and that it is not to be relied upon for establishment of fence, building, or other future improvement lines.

NOTE:

- 1) Bearings shown are Grid Bearings of the Colorado State Plane Coordinate System, North Zone, North American Datum 1983/2007. The lineal dimensions as contained herein are based upon the "U.S. Survey Foot."
- 2) Ground elevations are based on an observed GPS elevation (NAVD 1988 DATUM).
- 3) IMPROVEMENTS: See LOCATION DRAWING for all visible improvements within 400' of disturbed area.
- 4) SURFACE USE: CROPLAND
- 5) INSTRUMENT OPERATOR: BRIAN ROTTINGHAUS

SURFACE LOCATION

LAT: 40.53466°N
LONG: 104.66002°W
PDOP: 2.2
ELEV: 4790'
1/4,1/4: NE1/4NE1/4
NEAREST PROPERTY LINE: 330' E

TARGET

LAT: 40.53319°N
LONG: 104.66062°W



BOTTOM HOLE

LAT: 40.53347°N
LONG: 104.67594°W

NOTE

NOTE
According to Colorado law, you must commence any legal action based upon any defect in this W.L.C. within three years after you discover such defect. In no event, may any action based upon any defect in this survey be commenced more than ten years after the date of the certificate shown hereon. (13-80-105 C.R.S.)

LEGEND

- LEGEND
-  = ALIQUOT MONUMENT AS DESCRIBED
-  = CALCULATED POSITION

Brian T. Brinkman—On behalf of LANS, Inc.
Colorado Licensed Professional Land Surveyor No. 38175
DATE: rev.1/29/2013
PROJECT#: 2011242

