

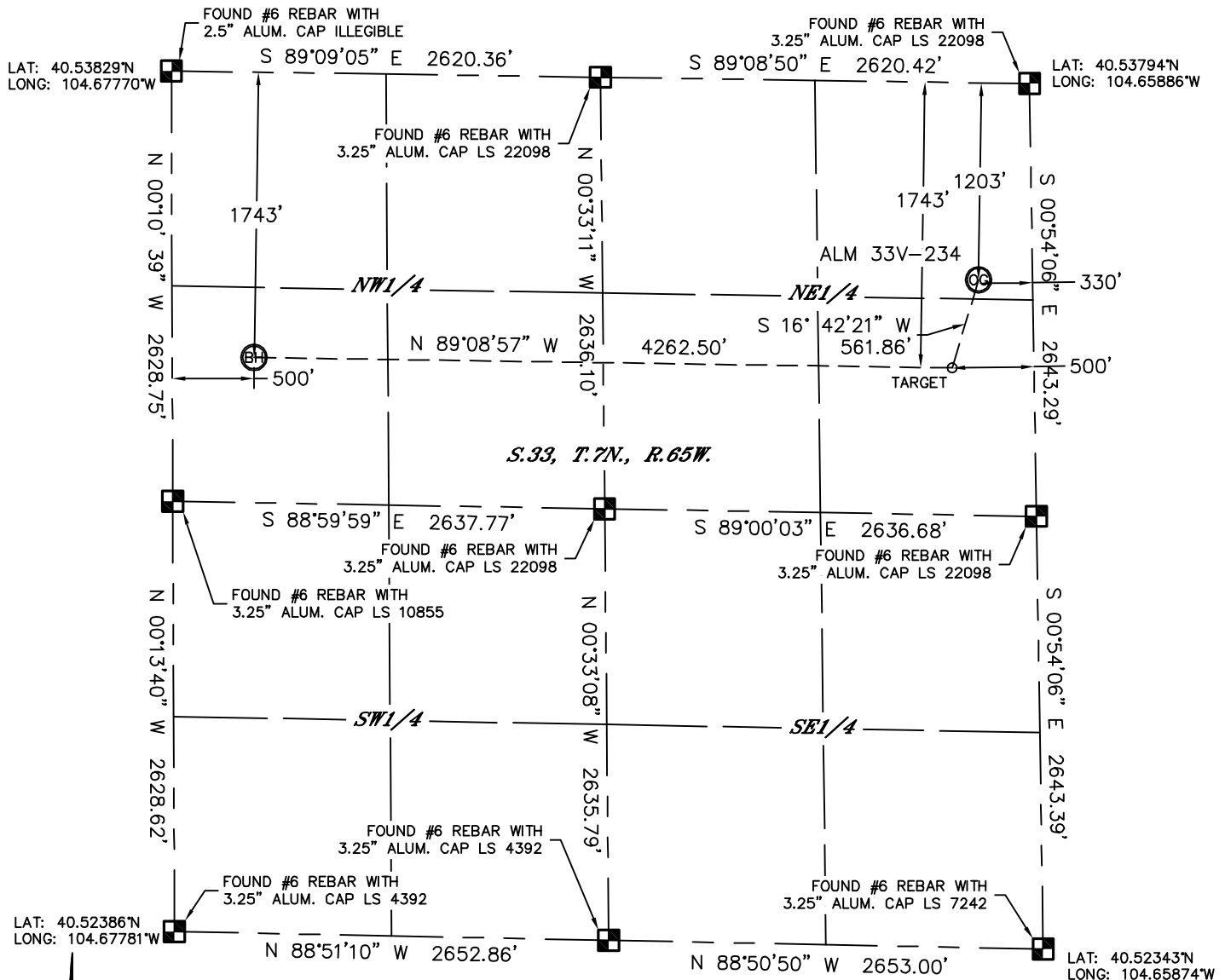


Lat40°, Inc. 1635 Foxtrail Drive, Suite 325 Loveland, CO 970-776-3321

# WELL LOCATION CERTIFICATE

SECTION: 33  
TOWNSHIP: 7N  
RANGE: 65W

THIS MAP DOES NOT REPRESENT A BOUNDARY SURVEY



In accordance with a request from Thomas Bragg with PDC Energy, Lat40°, Inc. has determined the surface location of the ALM 33V-234 to be 1203' from the NORTH line and 330' from the EAST line and the bottom hole to be 1743' from the NORTH line and 500' from the WEST line as measured at right angles from the section lines of Section 33, Township 7 North, Range 65 West of the Sixth Principal Meridian, County of Weld, State of Colorado.

I hereby state that this Well Location Certificate was prepared by me, or under my direct supervision, that the fieldwork was completed on 1/28/2013, for and on behalf of PDC Energy. That this is not a Land Survey Plat or an Improvement Survey Plat, and that it is not to be relied upon for establishment of fence, building, or other future improvement lines.

## NOTE:

- 1) Bearings shown are Grid Bearings of the Colorado State Plane Coordinate System, North Zone, North American Datum 1983/2007. The lineal dimensions as contained herein are based upon the "U.S. Survey Foot."
- 2) Ground elevations are based on an observed GPS elevation (NAVD 1988 DATUM).
- 3) IMPROVEMENTS: See LOCATION DRAWING for all visible improvements within 400' of disturbed area.
- 4) SURFACE USE: CROPLAND
- 5) INSTRUMENT OPERATOR: BRIAN ROTTINGHAUS

## SURFACE LOCATION

LAT: 40.53466°N  
LONG: 104.66002°W  
PDOP: 2.2  
ELEV: 4790'  
1/4, 1/4: NE1/4NE1/4  
NEAREST PROPERTY LINE: 330' E

## TARGET

LAT: 40.53319°N  
LONG: 104.66062°W

## BOTTOM HOLE

LAT: 40.53347°N  
LONG: 104.67594°W

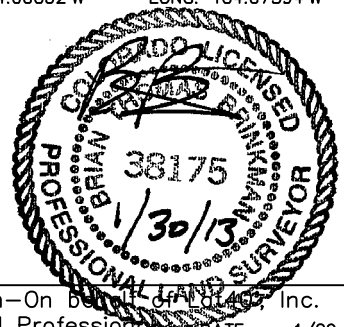
## NOTE

According to Colorado law, you must commence any legal action based upon any defect in this W.L.C. within three years after you discover such defect. In no event, may any action based upon any defect in this survey be commenced more than ten years after the date of the certificate shown hereon. (13-80-105 C.R.S.)

## LEGEND

- = ALIQUOT MONUMENT AS DESCRIBED  
○ = CALCULATED POSITION

Brian T. Brinkman—On behalf of Lat40°, Inc.  
Colorado Licensed Professional Land Surveyor No. 38175  
DATE: rev.1/29/2013  
PROJECT#: 2011242



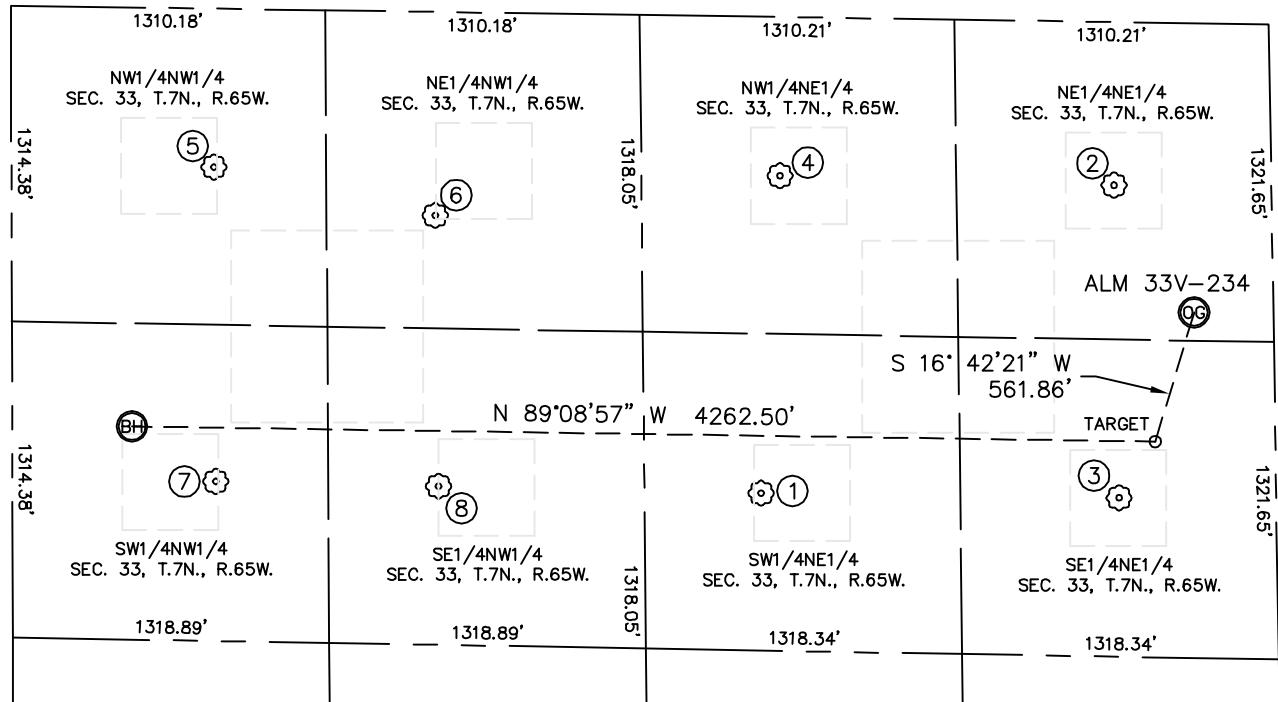


Lat40°, Inc. 1635 Foxtrail Drive, Suite 325 Loveland, CO 970-776-3321

# SITE SKETCH

ALM 33V-234

SECTION: 33  
TOWNSHIP: 7N  
RANGE: 65W



①

ALM 32-33  
SW1/4NE1/4  
1982' FNL  
2145' FEL  
LAT-40.53264°N  
LONG-104.66653°W  
PDOP: 2.0  
ELEV: 4793'

②

ALM 41-33  
NE1/4NE1/4  
679' FNL  
655' FEL  
LAT-40.53612°N  
LONG-104.66120°W  
PDOP: 1.9  
ELEV: 4795'

③

ALM 42-33  
SE1/4NE1/4  
1979' FNL  
654' FEL  
LAT-40.53255°N  
LONG-104.66117°W  
PDOP: 2.1  
ELEV: 4788'

④

ALM 31-33  
NW1/4NE1/4  
660' FNL  
2045' FEL  
LAT-40.53626°N  
LONG-104.66620°W  
PDOP: 1.8  
ELEV: 4799'

⑤

PAXTON 11-33  
NW1/4NW1/4  
659' FNL  
844' FWL  
LAT-40.53642°N  
LONG-104.67468°W  
PDOP: 2.4  
ELEV: 4805'

⑥

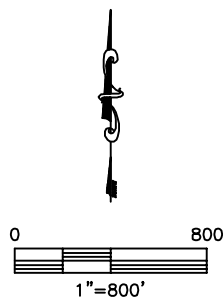
HAZEN 21-33  
NE1/4NW1/4  
847' FNL  
1765' FWL  
LAT-40.53585°N  
LONG-104.67137°W  
PDOP: 2.0  
ELEV: 4801'

⑦

PAXTON 12-13  
SW1/4NW1/4  
1967' FNL  
848' FWL  
LAT-40.53283°N  
LONG-104.67470°W  
PDOP: 1.9  
ELEV: 4800'

⑧

HAZEN 22-33  
SE1/4NW1/4  
1973' FNL  
1776' FWL  
LAT-40.53275°N  
LONG-104.67136°W  
PDOP: 2.6  
ELEV: 4795'



DATE: rev.1/29/2013  
PROJECT#: 2011242