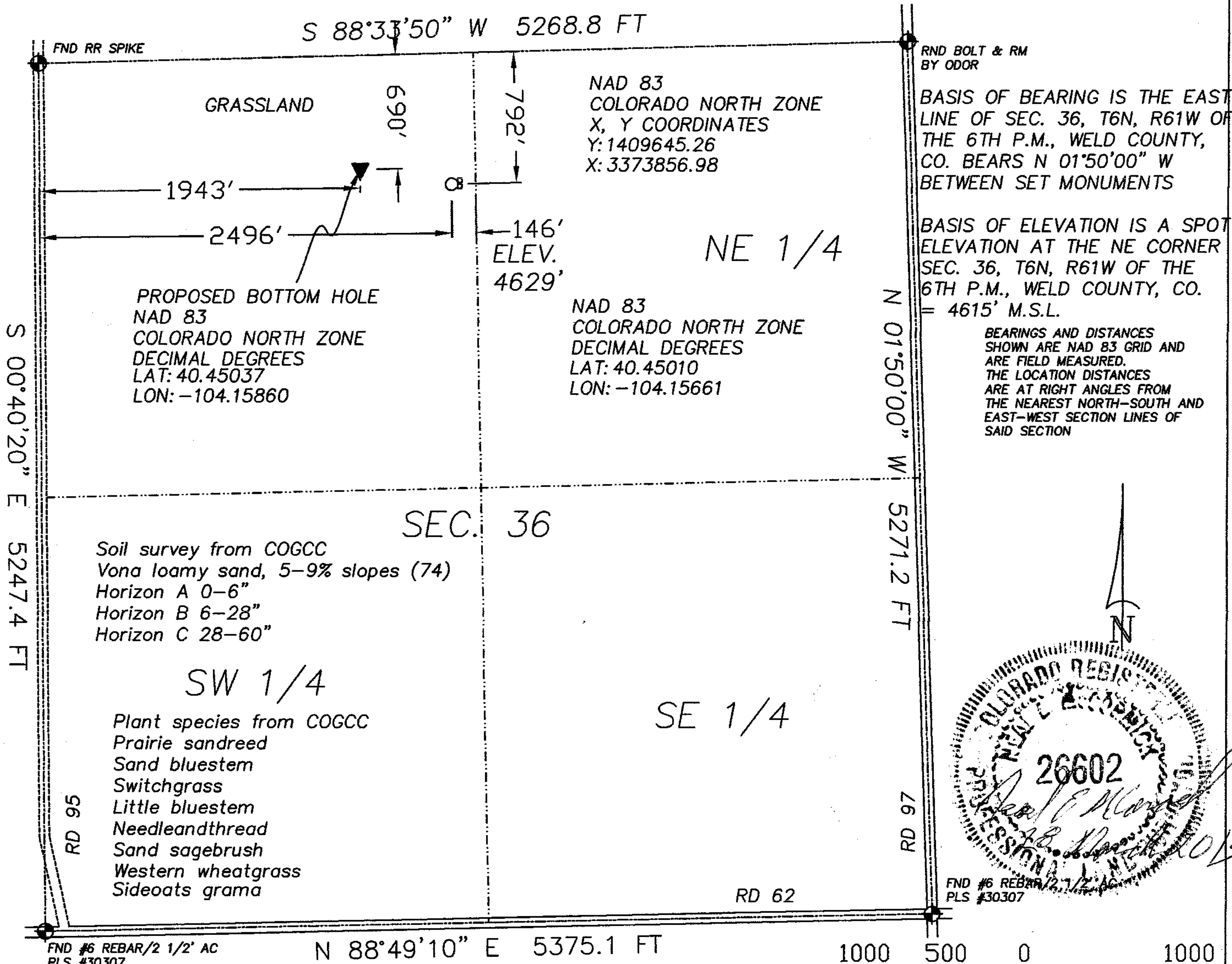


The accompanying plat is an accurate representation showing the location of a proposed well. This location may be described as a point 792 feet South of the North line, and 2496 feet East of the West line of Section 36, Township 6 North , Range 61 West of the 6th P.M., Weld County , Colorado.

The surface elevation at this point is 4629 feet m.s.l.

Note: This is not a land survey plat.

There are no visible improvements within 400 feet of the location, except existing production equipment.

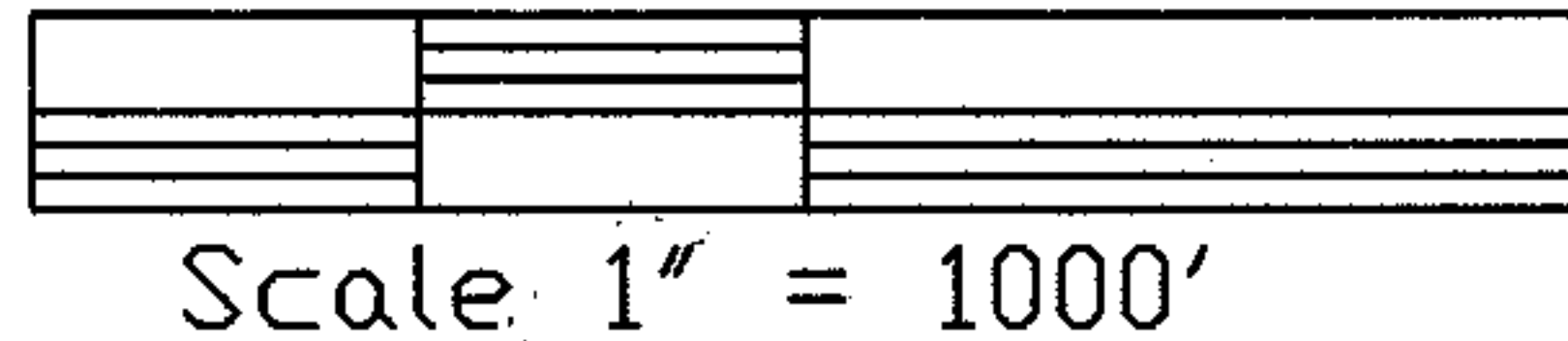


2.174 PDOP

- ☼ Dual Producer
- Oil well
- ☼ Gas Well
- ⊙ Dry Hole

GPS OPERATOR: NEAL MCCORMICK

- Location
- Fence Line
- Half-Sec. Line
- Section Line
- ==== Road
- Trail
- ⊙ Survey Monument



20575 Co. Rd. 21 Phone 970-774-3602
Haxtun, CO 80731 Email gps@pctelcom.coop

DATE OF FIELD WORK:

02 MARCH 2013

DATE OF DRAWING:

28 MARCH 2013

STATE 36-3ST

NE 1/4 NW 1/4 SEC. 36, T6N, R61W

FOUNDATION ENERGY MANAGEMENT LLC

WELD COUNTY, COLORADO

W366N61GPS

13101-101

PHOTOS BY GREAT PLAINS SURVEYING, INC.



State 36-3ST
NE ¼ NW ¼ SEC. 36, T6N, R61W
Looking East
02 March, 2013



State 36-3ST
NE ¼ NW ¼ SEC. 36, T6N, R61W
Looking North
02 March, 2013

PHOTOS BY GREAT PLAINS SURVEYING, INC.



State 36-3ST
NE ¼ NW ¼ SEC. 36, T6N, R61W
Looking West
02 March, 2013

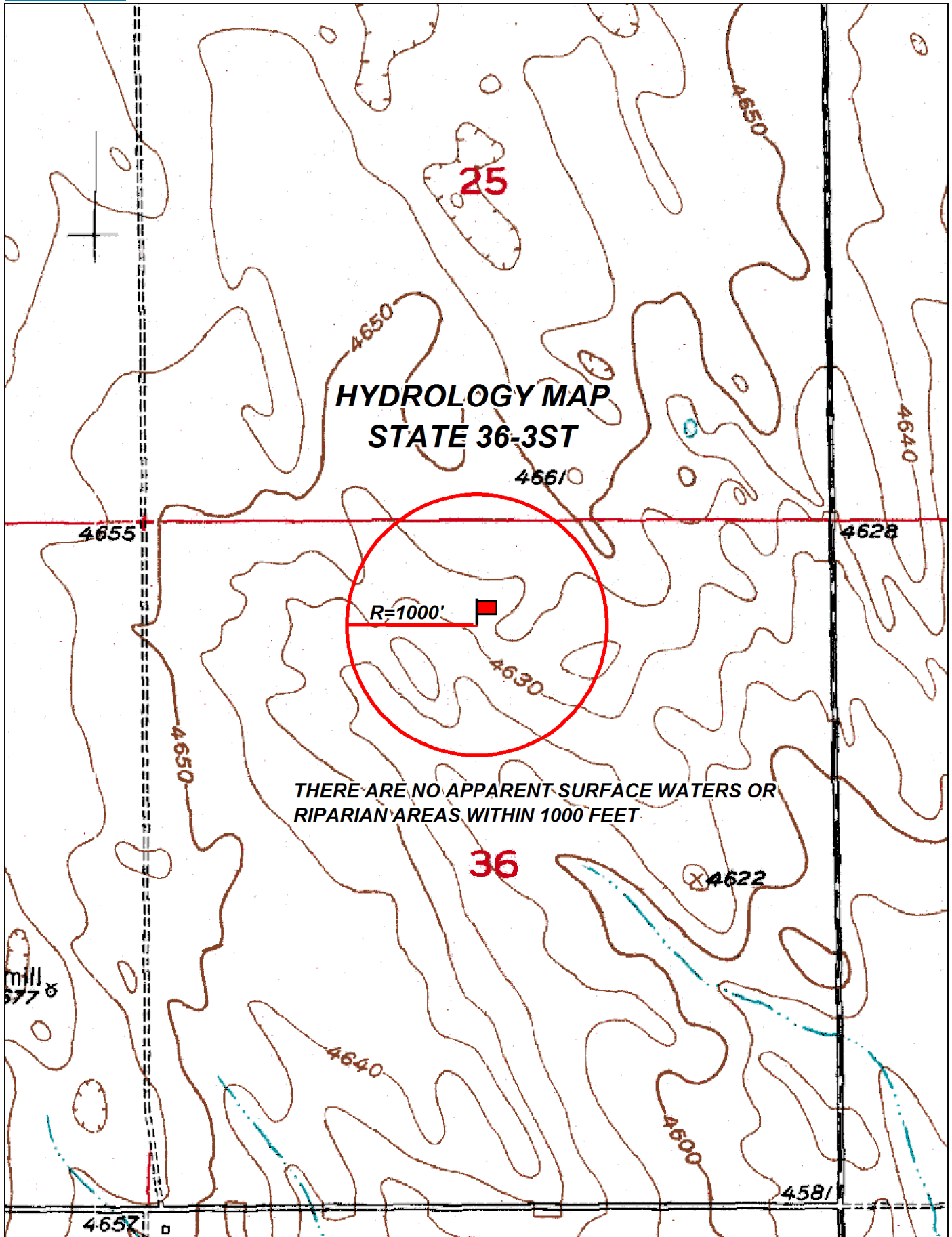


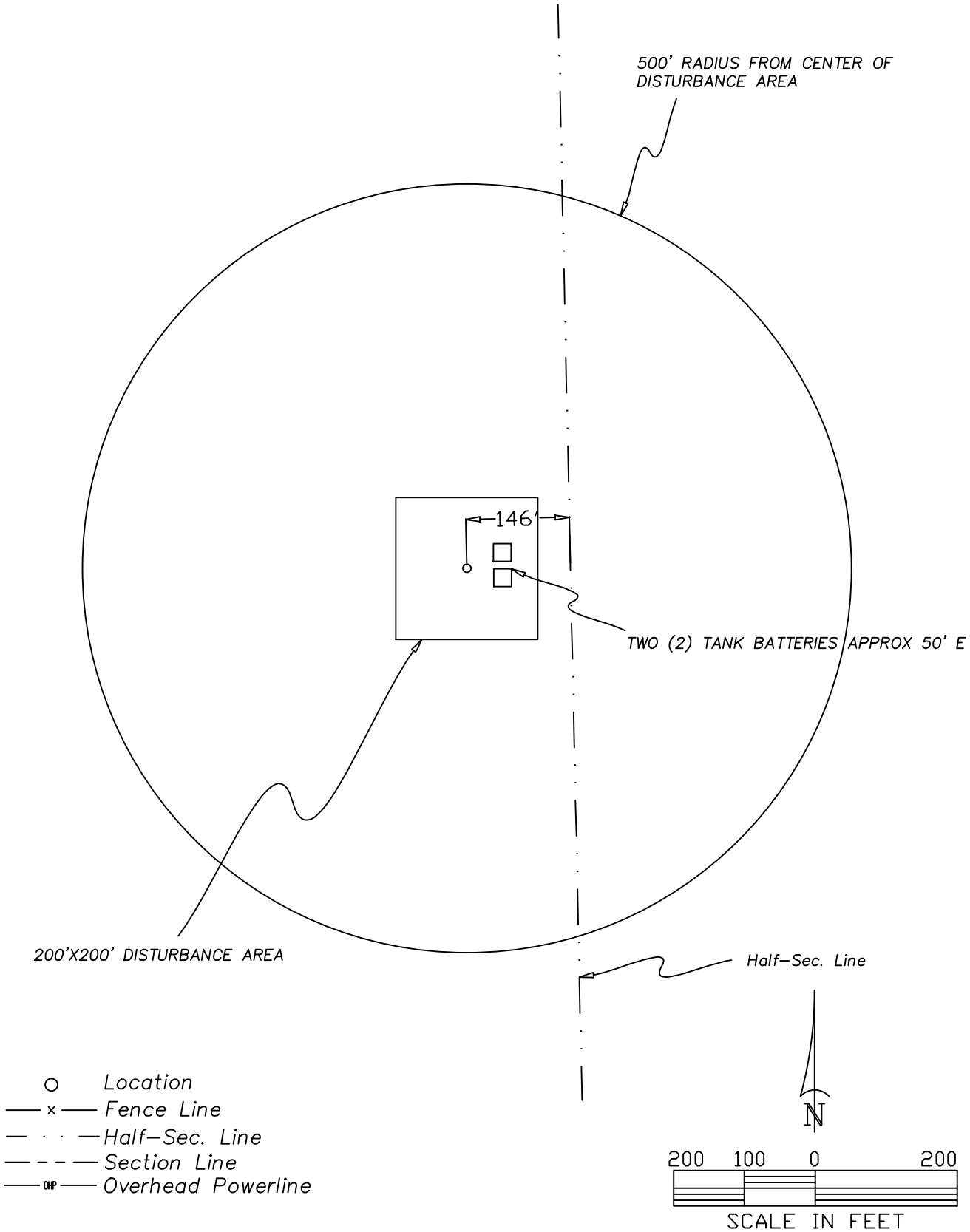
State 36-3ST
NE ¼ NW ¼ SEC. 36, T6N, R61W
Looking South
02 March, 2013


Foundation Energy Management, LLC
11301-101









 <p>GREAT PLAINS SURVEYING, INC.</p> <p>20575 Co. Rd. 21 Haxtun, CO 80731</p> <p>Phone 970-774-3602 Email gps@pctelcom.coop</p>	LOCATION DRAWING
	STATE 36-3ST
	SCALE 1" = 200'
	WELD COUNTY, COLORADO
L366N61GPS	
13101-101	

Map Unit Description

Weld County, Colorado, Southern Part

74 Vona loamy sand, 5 to 9 percent slopes

Setting

Elevation: 4600 to 5200 feet
Mean annual precipitation: 13 to 15 inches
Mean annual air temperature: 48 to 55 degrees F
Frost-free period: 130 to 160 days

Composition

Vona and similar soils: 85 percent
Minor components: 15 percent

Description of Vona

Setting

Landform: Plains
Down-slope shape: Linear
Across-slope shape: Linear
Parent material: Eolian deposits

Properties and Qualities

Slope: 5 to 9 percent
Drainage class: Well drained
Capacity of the most limiting layer to transmit water (Ksat): High (1.98 to 6.00 in/hr)
Frequency of flooding: None
Frequency of ponding: None
Calcium carbonate maximum: 15 percent
Gypsum maximum: 0 percent
Available water capacity: Moderate (about 6.5 inches)

Interpretive Groups

Land capability classification (irrigated): 6e
Land capability (non irrigated): 6e
Ecological site: Sandy Plains (R067BY024CO)

Typical Profile

0 to 6 inches: loamy sand
6 to 28 inches: fine sandy loam
28 to 60 inches: sandy loam

Minor Components

Valent

Percent of map unit: 10 percent

Remmit

Percent of map unit: 5 percent

Rangeland Productivity and Plant Composition

Weld County, Colorado, Southern Part

Map symbol and soil name	Ecological site	Total dry-weight production			Characteristic vegetation	Rangeland composition
		Favorable year	Normal year	Unfavorable year		
		<i>Lb/Ac</i>	<i>Lb/Ac</i>	<i>Lb/Ac</i>		<i>Pct</i>
74:						
Vona	Sandy Plains	2,000	1,700	1,200	Prairie sandreed	20
					Sand bluestem	10
					Switchgrass	10
					Little bluestem	5
					Needleandthread	5
					Sand sagebrush	5
					Sideoats grama	5
					Western wheatgrass	5