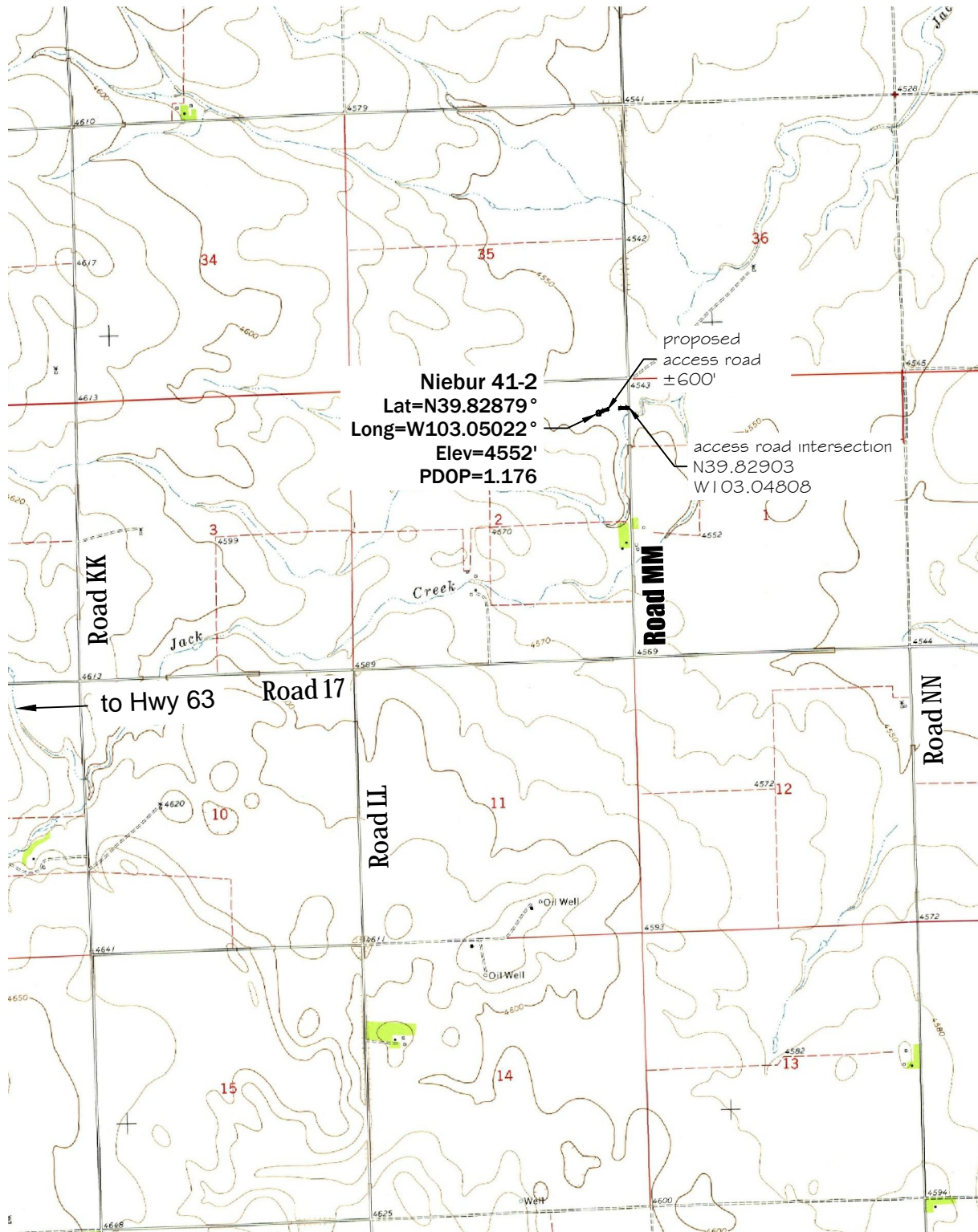


Access Road Vicinity Map



- Notes:
- Topographic map contours and spot elevations based on NGVD 1929 Datum.
 - Topographic map dated 1971 (revised 1984).

\\vmware-host\Shared Folders\Documents\PLS Group\Project\2013\13047\dwg\13047.dwg April 04, 2013 - 10:35am

| | | | |
|----------------------------------|---------------------------------|--|--------------------------------|
| Well Name: Niebur 41-2 | Field Date 3/29/2013 | Prepared for: Edward Mike Davis, LLC | Project#: 12102.001f |
| Section 2-T3S-R51W-6th PM, NE-NE | Party Chief DCB | PLS Group, LLC 1623 Central Avenue - Suite 8 Cheyenne, Wyoming 82001 307.632.9636 office - 307.432.4038 fax | |
| Washington County, Colorado | Proj. Manager MBS | | |
| | Drawing Date 4/3/2013 | | |