

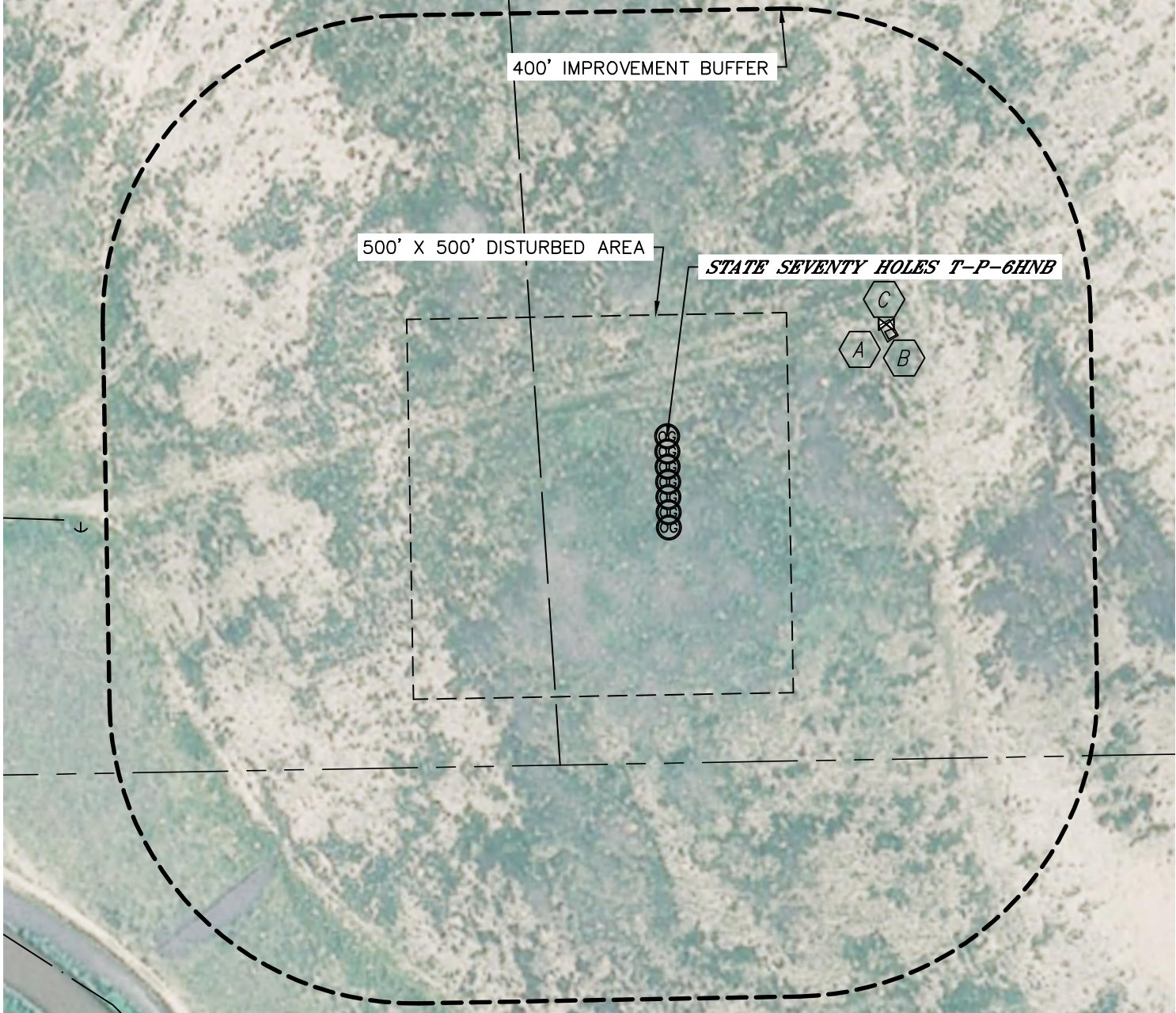


Lat40°, Inc. 1635 Foxtrail Drive, Suite 325 Loveland, CO 970-776-3321

LOCATION DRAWING




SECTION: 6
TOWNSHIP: 4N
RANGE: 62W

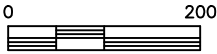
STATE SEVENTY HOLES T-6 PAD



IMPROVEMENTS:

(MEASURED FROM PROPOSED STATE SEVENTY HOLES T-P-6HNB WELL LOCATION)

-  FENCE 316' NE
-  EDGE OF CONCRETE 318' NE
-  WATER VALVE 324' NE



1"=200'

NEAREST: BUILDING 5280'+, PUBLIC ROAD 5280'+,
ABOVE GROUND UTILITY 802' SW, RAILROAD 5280'+, PROPERTY LINE 430' S

DATE: 3/8/2013
PROJECT#: 2012180