

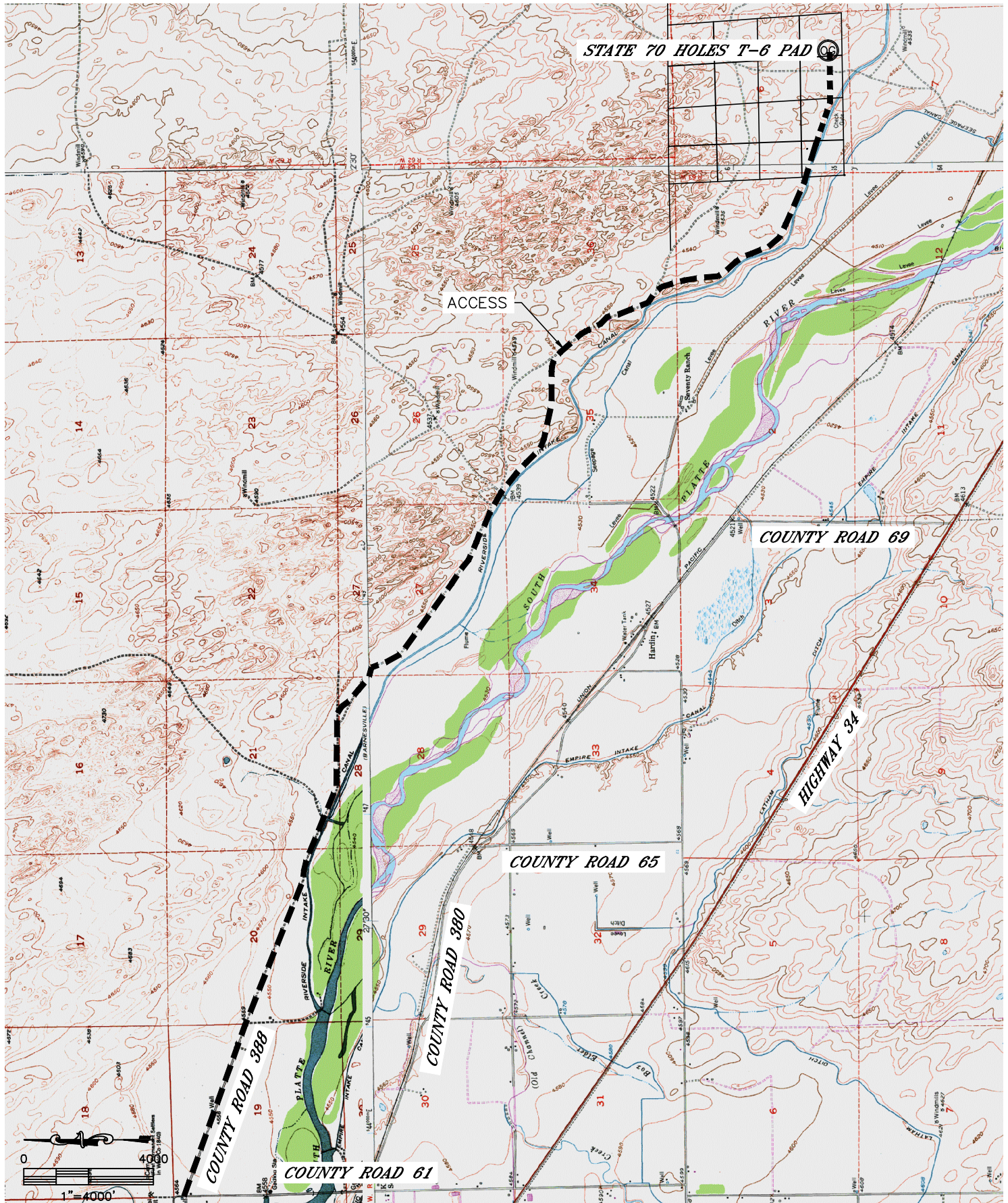


Lat40°, Inc. 1635 Foxtrail Drive, Suite 325 Loveland, CO 970-776-3321

ACCESS ROAD MAP

STATE SEVENTY HOLES T-6 PAD

SECTION: 6
TOWNSHIP: 4N
RANGE: 62W



DATE: 3/8/2013
PROJECT#: 2012180