



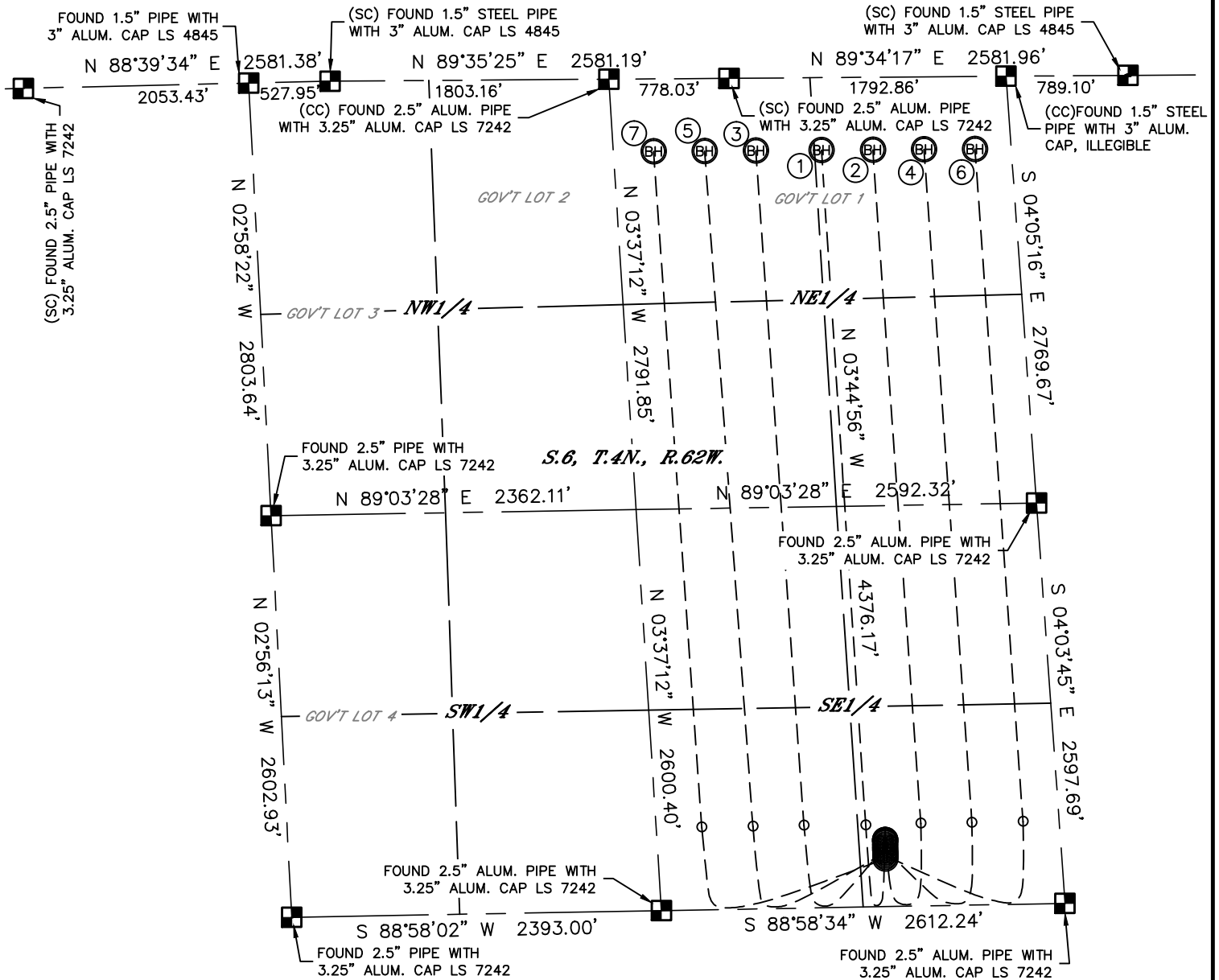
Lat40°, Inc. 1635 Foxtrail Drive, Suite 325 Loveland, CO 970-776-3321

MULTI-WELL PLAN

SECTION: 6
TOWNSHIP: 4N
RANGE: 62W

STATE SEVENTY HOLES T-6 PAD

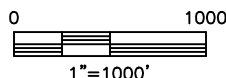
THIS MAP DOES NOT REPRESENT A BOUNDARY SURVEY



- | | | | | | |
|--|---|---|---|---|---|
| ① | ② | ③ | ④ | ⑤ | ⑥ |
| -SURFACE LOCATION-
STATE SEVENTY HOLES
T-P-6HNB
430' FSL
1133' FEL
LAT: 40.33549°N
LONG: 104.36300°W | -SURFACE LOCATION-
STATE SEVENTY HOLES
A2-06
410' FSL
1134' FEL
LAT: 40.33544°N
LONG: 104.36299°W | -SURFACE LOCATION-
STATE SEVENTY HOLES
A3-06
390' FSL
1135' FEL
LAT: 40.33538°N
LONG: 104.36299°W | -SURFACE LOCATION-
STATE SEVENTY HOLES
A4-06
370' FSL
1136' FEL
LAT: 40.33533°N
LONG: 104.36299°W | -SURFACE LOCATION-
STATE SEVENTY HOLES
A5-06
350' FSL
1137' FEL
LAT: 40.33528°N
LONG: 104.36299°W | -SURFACE LOCATION-
STATE SEVENTY HOLES
A6-06
330' FSL
1138' FEL
LAT: 40.33522°N
LONG: 104.36299°W |
| | | | | | ⑦ |
| | | | | | -SURFACE LOCATION-
STATE SEVENTY HOLES
A7-06
310' FSL
1140' FEL
LAT: 40.33517°N
LONG: 104.36299°W |

LEGEND

- = ALIQUOT MONUMENT AS DESCRIBED
- = CALCULATED POSITION



DATE: rev3/19/2013
PROJECT#: 2012180



Lat40°, Inc. 1635 Foxtrail Drive, Suite 325 Loveland, CO 970-776-3321

MULTI-WELL PLAN
STATE SEVENTY HOLES T-6 PAD

SECTION: 6
TOWNSHIP: 4N
RANGE: 62W

