

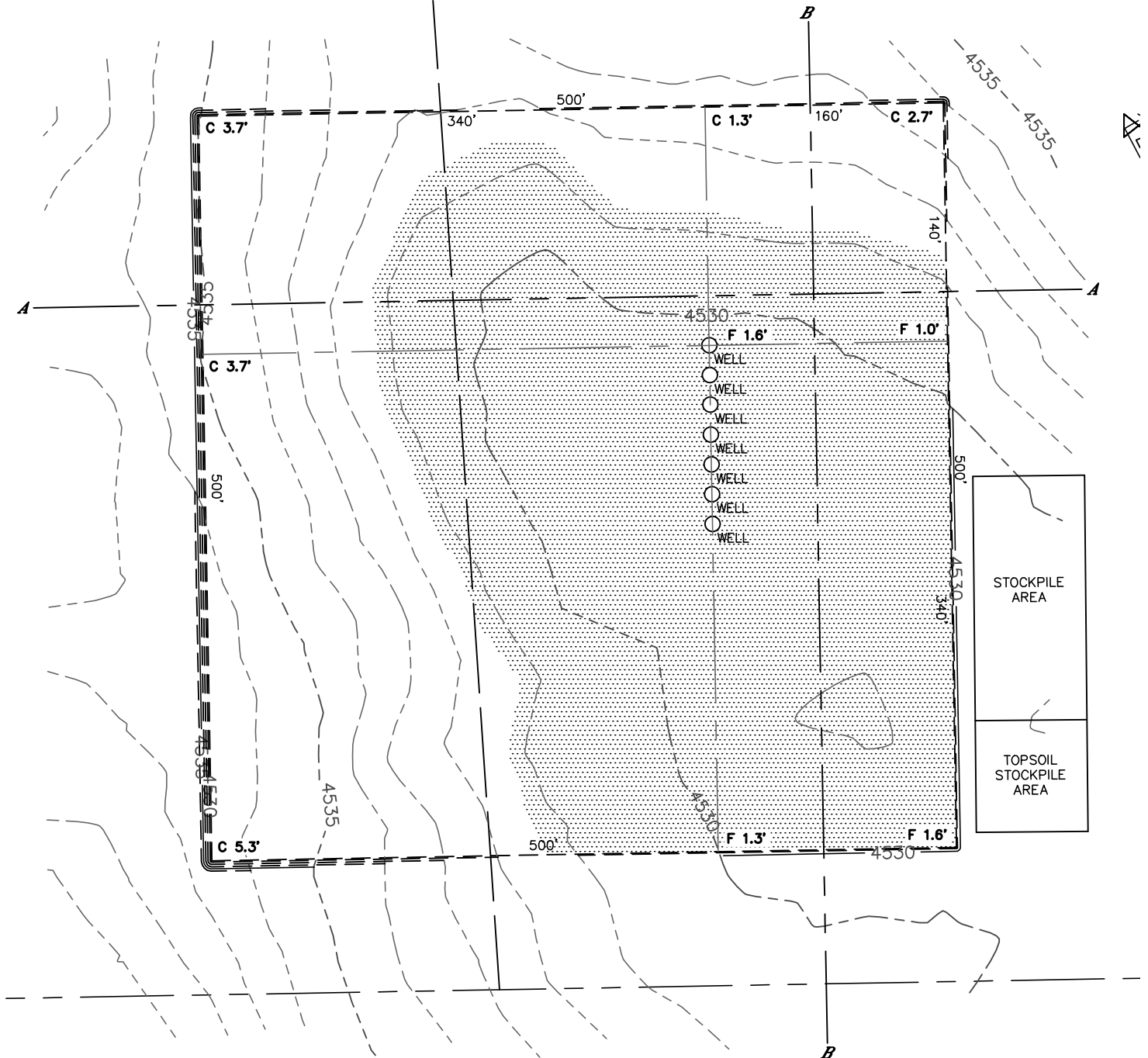


Lat40°, Inc. 1635 Foxtrail Drive, Suite 325 Loveland, CO 970-776-3321

CUT & FILL DIAGRAM

STATE SEVENTY HOLES T-6 PAD

SECTION: 6
TOWNSHIP: 4N
RANGE: 62W



OPERATOR: BONANZA CREEK ENERGY, INC.

LOCATION: 430' FSL, 1133' FEL

EXISTING ELEV= 4529.7'

PROPOSED ELEV= 4531.3'

DISTURBANCE= 5.9 ACRES

ESTIMATED EARTHWORK:

TOPSOIL= 9,531 CY

CUT= 7,796 CY

FILL= 7,786 CY

STOCKPILE:

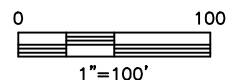
EXCESS= 10 CY

NOTE:

- 1) Ground elevations are based on an observed GPS elevation (NAVD 1988 DATUM).
- 2) No allowance has been made for soil expansion or compaction
- 3) Proposed elevation does not account for top soil removal.
- 4) Top soil volume assumes 12" depth across entire location.
- 5) Fill slopes 2:1
- 6) Cut slopes 1.5:1

LEGEND

| | |
|--------------|-----|
| EX. CONTOUR | --- |
| PRO. CONTOUR | --- |
| FILL AREA | |



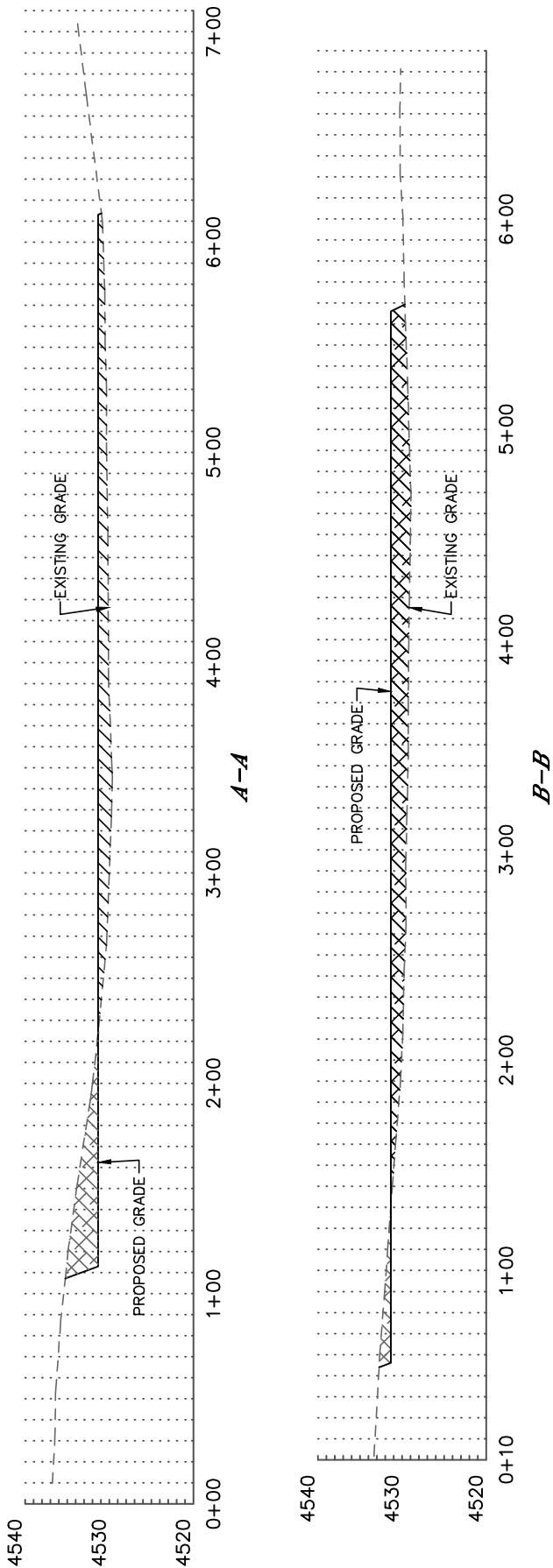
DATE: 3/8/2013
PROJECT#: 2012180



CROSS SECTION DIAGRAM

STATE SEVENTY HOLES T-6 PAD

SECTION: 6
TOWNSHIP: 4N
RANGE: 62W



HORIZONTAL SCALE: 1"=80', VERTICAL SCALE: 1"=20'