

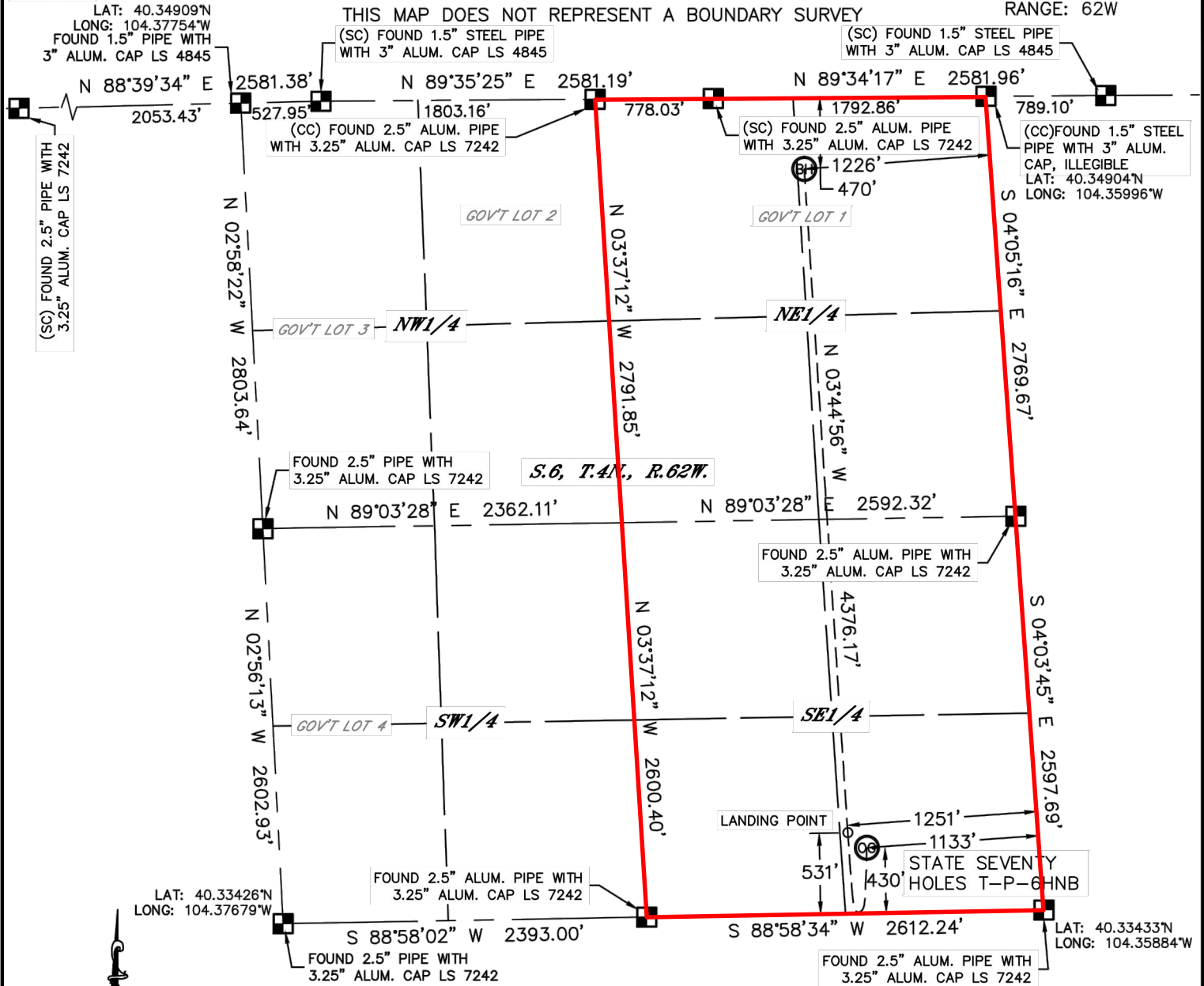


Lat40°, Inc. 1635 Foxtrail Drive, Suite 325 Loveland, CO 970-776-3321

WELL LOCATION CERTIFICATE

SECTION: 6
TOWNSHIP: 4N
RANGE: 62W

THIS MAP DOES NOT REPRESENT A BOUNDARY SURVEY



In accordance with a request from Michael Meagher with BONANZA CREEK ENERGY, INC.
Lat40°, Inc. has determined the surface location of the STATE SEVENTY HOLES T-P-6HNB to be 430' from
the SOUTH line and 1133' from the EAST line and the bottom hole to be 430' from the NORTH line and



**BONANZA
CREEK**

Wellbore Spacing Unit Outline



Wellbore Spacing Unit Map

09 April 2013 ksc

State Seventy Holes T-P-6HNC
E/2 T4N R62W 6th PM
Weld County, Colorado