

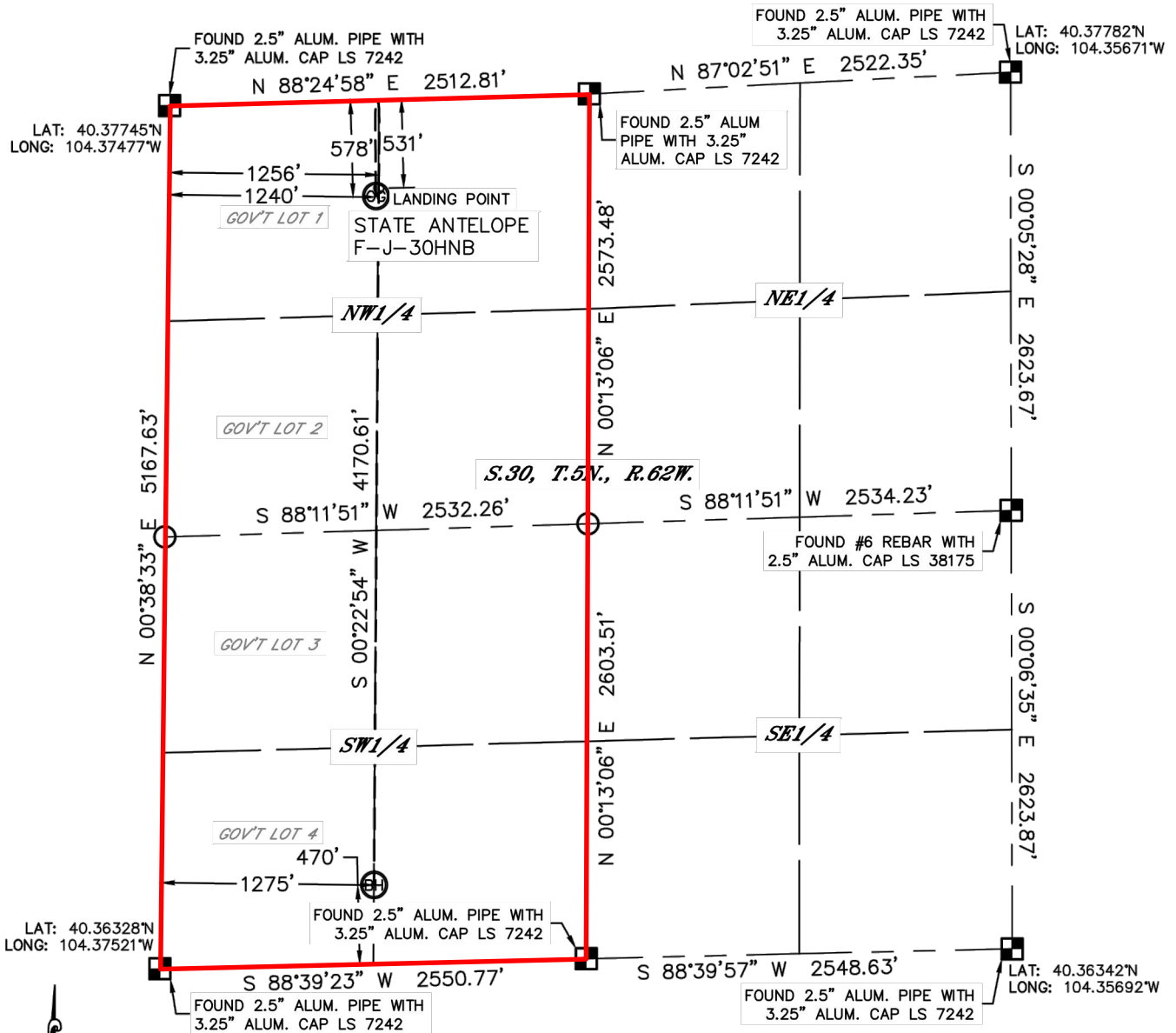


Lat40°, Inc. 1635 Foxtrail Drive, Suite 325 Loveland, CO 970-776-3321

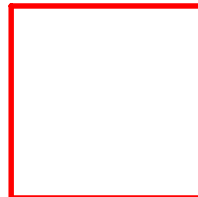
## WELL LOCATION CERTIFICATE

THIS MAP DOES NOT REPRESENT A BOUNDARY SURVEY

SECTION: 30  
TOWNSHIP: 5N  
RANGE: 62W



In accordance with a request from Michael Meagher with BONANZA CREEK ENERGY, INC. Lat40°, Inc. has determined the surface location of the STATE ANTELOPE F-J-30HNB to be 578' from the NORTH line and 1240' from the WEST line and the bottom hole to be 470' from the SOUTH line and 1275' from the WEST line.



Wellbore Spacing Unit Outline



### Wellbore Spacing Unit Map

09 April 2013 ksc

State Antelope F-J-30HNB  
W/2 Sec 30 T5N R62W 6th PM  
Weld County, Colorado