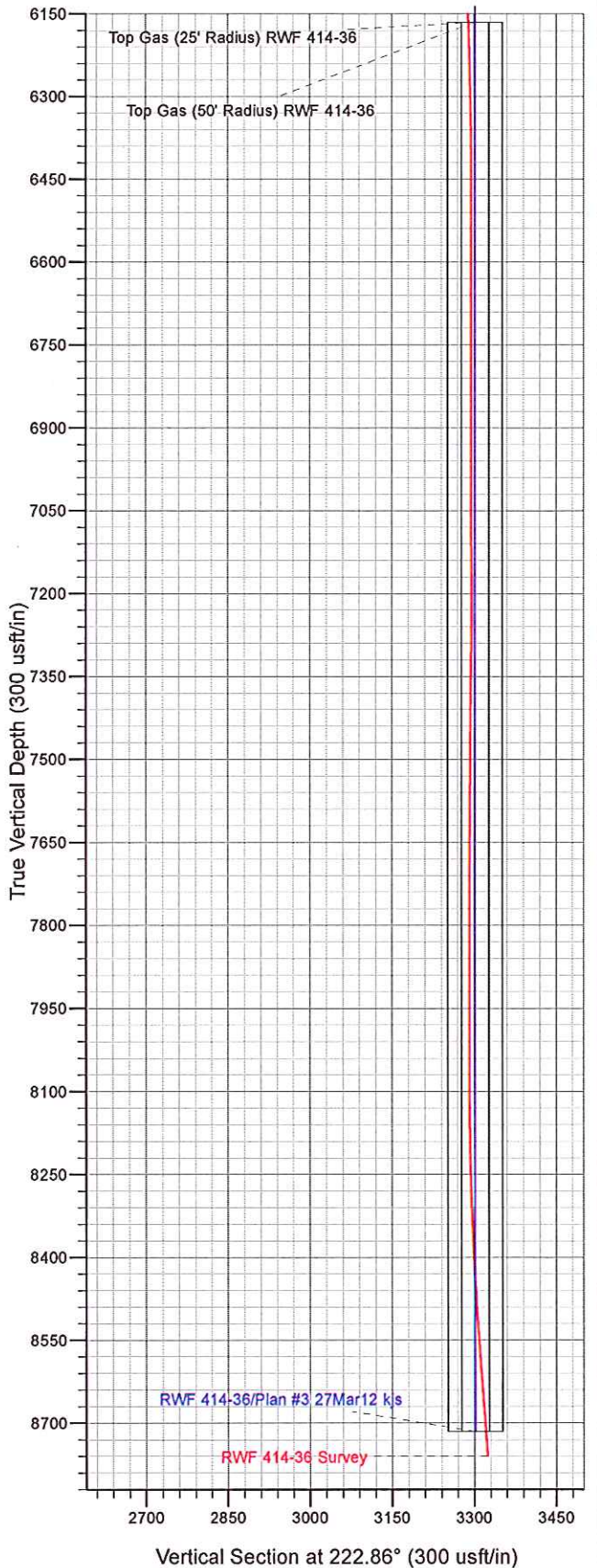




Well Name: RWF 414-36
Surface Location: RWF 33-36 Pad - west
North American Datum 1983 , US State Plane 1983 . Colorado Central Zone
Ground Elevation: 6528.00

+N/-S	+E/-W	Northing	Easting	Latitude	Longitude	Slot
0.00	0.00	1609005.70	2340495.30	39.48221	-107.83681	B 1

KELLY BUSHING @ 6554.00usft (SSD 576 (26' RKB) jib)



Azimuths to True North
Magnetic North: 10.11°

Magnetic Field
Strength: 52126.8snT
Dip Angle: 65.72°
Date: 10/5/2012
Model: IGRF2010