

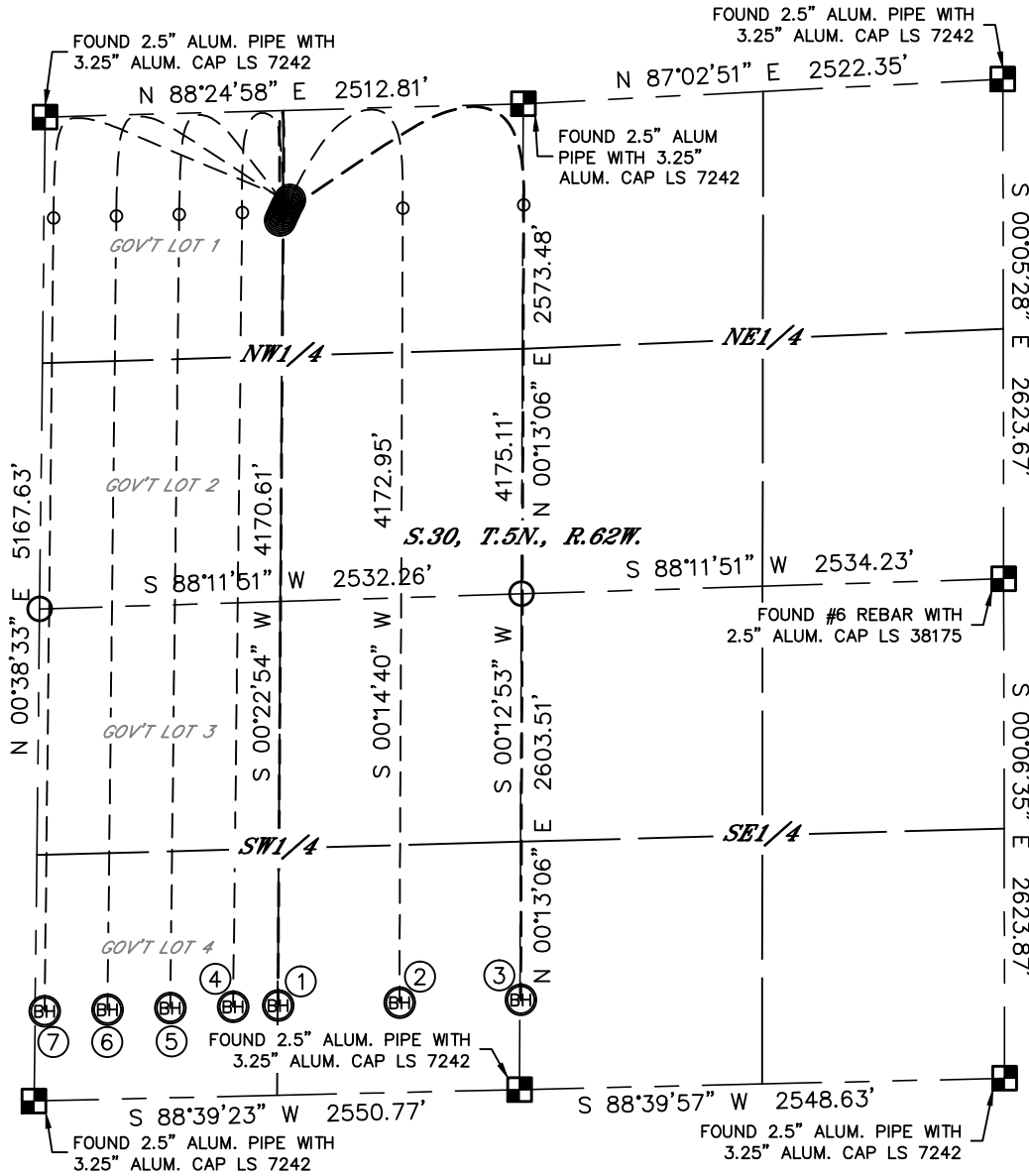


MULTI-WELL PLAN

STATE ANTELOPE F-30 PAD

THIS MAP DOES NOT REPRESENT A BOUNDARY SURVEY

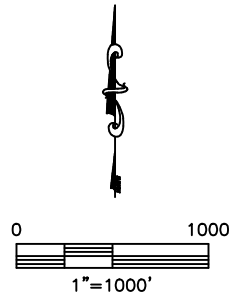
SECTION: 30
TOWNSHIP: 5N
RANGE: 62W



- ① -SURFACE LOCATION-
STATE ANTELOPE
F-J-30HNB
578' FNL
1240' FWL
LAT: 40.37592°N
LONG: 104.37036°W
- ② -SURFACE LOCATION-
STATE ANTELOPE
21-24-30HNC
560' FNL
1248' FWL
LAT: 40.37597°N
LONG: 104.37033°W
- ③ -SURFACE LOCATION-
STATE ANTELOPE
K-O-30HNB
542' FNL
1256' FWL
LAT: 40.37602°N
LONG: 104.37030°W
- ④ -SURFACE LOCATION-
STATE ANTELOPE A4-30
524' FNL
1264' FWL
LAT: 40.37607°N
LONG: 104.37027°W
- ⑤ -SURFACE LOCATION-
STATE ANTELOPE A5-30
506' FNL
1273' FWL
LAT: 40.37612°N
LONG: 104.37024°W
- ⑥ -SURFACE LOCATION-
STATE ANTELOPE A6-30
488' FNL
1281' FWL
LAT: 40.37617°N
LONG: 104.37021°W
- ⑦ -SURFACE LOCATION-
STATE ANTELOPE A7-30
470' FNL
1288' FWL
LAT: 40.37622°N
LONG: 104.37018°W

LEGEND

- = ALIQUOT MONUMENT AS DESCRIBED
- = CALCULATED POSITION



DATE: 3/20/2013
PROJECT#: 2011350

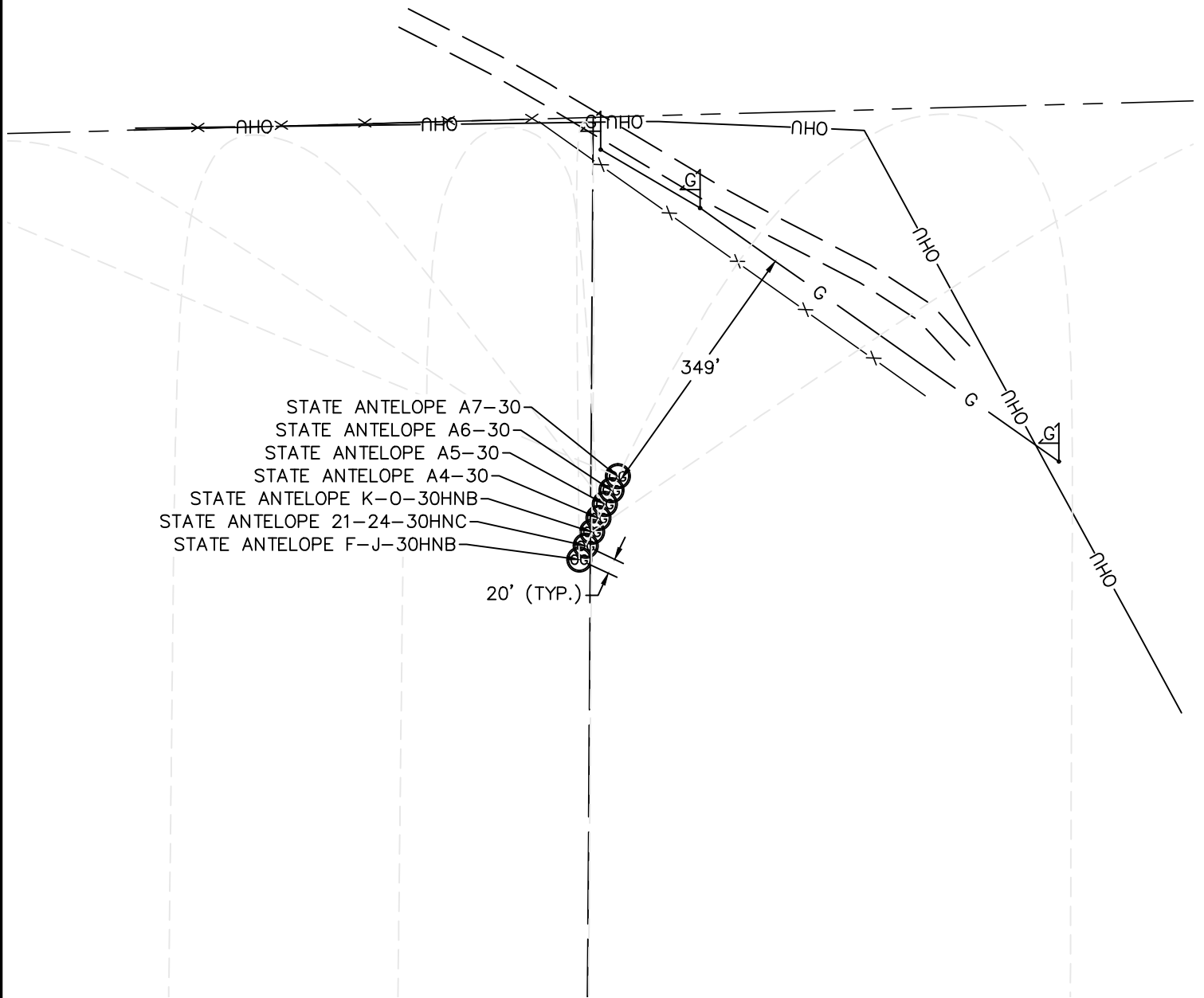


Lat40°, Inc. 1635 Foxtrail Drive, Suite 325 Loveland, CO 970-776-3321

MULTI-WELL PLAN

STATE ANTELOPE F-30 PAD

SECTION: 30
TOWNSHIP: 5N
RANGE: 62W



0 200
1"=200'

DATE: 3/20/2013
PROJECT#: 2011350