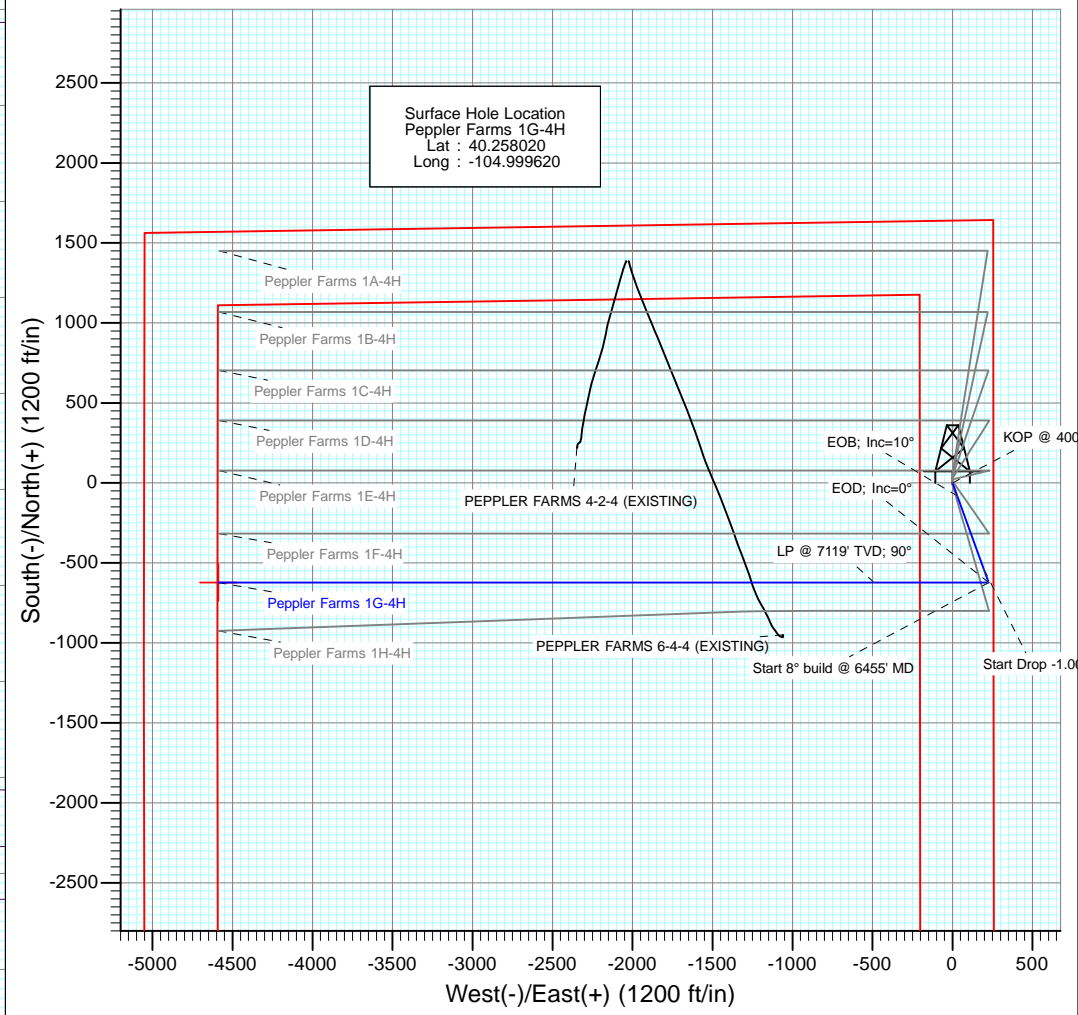


SECTION DETAILS											
Sec	MD	Inc	Azi	TVD	+N/-S	+E/-W	Dleg	TFace	VSec	Target	Annotation
1	0.0	0.00	0.00	0.0	0.0	0.0	0.00	0.00	0.0		
2	400.0	0.00	0.00	400.0	0.0	0.0	0.00	0.00	0.0		KOP @ 400'
3	1400.0	10.00	160.00	1394.9	-81.8	29.8	1.00	160.00	-29.8		EOB; Inc=10°
4	4210.0	10.00	160.00	4162.2	-540.3	196.7	0.00	0.00	-196.7		Start Drop -1.00
5	5210.0	0.00	0.00	5157.2	-622.1	226.4	1.00	180.00	-226.4		EOD; Inc=0°
6	6455.6	0.00	0.00	6402.8	-622.1	226.4	0.00	0.00	-226.4		Start 8° build @ 6455' MD
7	7580.6	90.00	270.00	7119.0	-622.2	-489.8	8.00	270.00	489.8		LP @ 7119' TVD; 90°
8	11679.3	90.00	270.00	7119.0	-622.5	-4588.4	0.00	0.00	4588.4		TD at 11679.3



DESIGN TARGET DETAILS						
Name	+N/-S	+E/-W	Northing	Easting	Latitude	Longitude
Peppler Farms 1G-4H PBHL	-622.5	-4588.4	1336586.58	3135073.57	40.256310	-105.016060

**T M**

Azimuths to True North  
 Magnetic North: 8.76°

Magnetic Field  
 Strength: 52860.3snT  
 Dip Angle: 66.84°  
 Date: 1/23/2013  
 Model: IGRF2010

FORMATION TOP DETAILS		
TVDPath	MDPath	Formation
68.0	68.0	Fox Hills
4065.0	4111.3	Sussex
4360.0	4410.2	Sussex Marker
4635.0	4687.1	Shannon
6183.0	6235.8	Teepee Buttes
7042.0	7245.5	Sharon Springs
7107.0	7449.3	Niobrara

Plan #1  
 Peppler Farms 1G-4H  
 13xxx; LR  
 WELL @ 5066.0ft (Ensign)  
 Ground Elevation @ 5053.0  
 North American Datum 1983  
 Well Peppler Farms 1G-4H, True North

Vertical Section at 270.00° (1000 ft/in)

## Planning Report

<b>Database:</b>	USA EDM 5000 Multi Users DB	<b>Local Co-ordinate Reference:</b>	Well Pepler Farms 1G-4H
<b>Company:</b>	EnCana Oil & Gas (USA) Inc	<b>TVD Reference:</b>	WELL @ 5066.0ft (Ensign)
<b>Project:</b>	DJ Wattenberg	<b>MD Reference:</b>	WELL @ 5066.0ft (Ensign)
<b>Site:</b>	S4-T3N-R68W (Pepler Farms)	<b>North Reference:</b>	True
<b>Well:</b>	Pepler Farms 1G-4H	<b>Survey Calculation Method:</b>	Minimum Curvature
<b>Wellbore:</b>	Hz		
<b>Design:</b>	Plan #1		

<b>Project</b> DJ Wattenberg			
<b>Map System:</b>	US State Plane 1983	<b>System Datum:</b>	Mean Sea Level
<b>Geo Datum:</b>	North American Datum 1983		
<b>Map Zone:</b>	Colorado Northern Zone		

<b>Site</b> S4-T3N-R68W (Pepler Farms)			
<b>Site Position:</b>		<b>Northing:</b>	1,337,296.89 ft
<b>From:</b>	Lat/Long	<b>Easting:</b>	3,139,658.06 ft
<b>Position Uncertainty:</b>	0.0 ft	<b>Slot Radius:</b>	13.200 in
		<b>Latitude:</b>	40.258190
		<b>Longitude:</b>	-104.999620
		<b>Grid Convergence:</b>	0.32 °

<b>Well</b> Pepler Farms 1G-4H			
<b>Well Position</b>	<b>+N/-S</b>	0.0 ft	<b>Northing:</b> 1,337,234.96 ft
	<b>+E/-W</b>	0.0 ft	<b>Easting:</b> 3,139,658.41 ft
			<b>Latitude:</b> 40.258020
			<b>Longitude:</b> -104.999620
<b>Position Uncertainty</b>		0.0 ft	<b>Wellhead Elevation:</b> ft
			<b>Ground Level:</b> 5,053.0 ft

<b>Wellbore</b> Hz					
<b>Magnetics</b>	<b>Model Name</b>	<b>Sample Date</b>	<b>Declination</b>	<b>Dip Angle</b>	<b>Field Strength</b>
			(°)	(°)	(nT)
	IGRF2010	1/23/2013	8.76	66.84	52,860

<b>Design</b> Plan #1				
<b>Audit Notes:</b>				
<b>Version:</b>	<b>Phase:</b>	PLAN	<b>Tie On Depth:</b>	0.0
<b>Vertical Section:</b>	<b>Depth From (TVD)</b>	<b>+N/-S</b>	<b>+E/-W</b>	<b>Direction</b>
	(ft)	(ft)	(ft)	(°)
	0.0	0.0	0.0	270.00

<b>Plan Sections</b>										
Measured Depth (ft)	Inclination (°)	Azimuth (°)	Vertical Depth (ft)	+N/-S (ft)	+E/-W (ft)	Dogleg Rate (°/100ft)	Build Rate (°/100ft)	Turn Rate (°/100ft)	TFO (°)	Target
0.0	0.00	0.00	0.0	0.0	0.0	0.00	0.00	0.00	0.00	
400.0	0.00	0.00	400.0	0.0	0.0	0.00	0.00	0.00	0.00	
1,400.0	10.00	160.00	1,394.9	-81.8	29.8	1.00	1.00	0.00	160.00	
4,210.0	10.00	160.00	4,162.2	-540.3	196.7	0.00	0.00	0.00	0.00	
5,210.0	0.00	0.00	5,157.2	-622.1	226.4	1.00	-1.00	0.00	180.00	
6,455.6	0.00	0.00	6,402.8	-622.1	226.4	0.00	0.00	0.00	0.00	
7,580.6	90.00	270.00	7,119.0	-622.2	-489.8	8.00	8.00	0.00	270.00	
11,679.3	90.00	270.00	7,119.0	-622.5	-4,588.4	0.00	0.00	0.00	0.00	Pepler Farms 1G-4H

## Planning Report

<b>Database:</b>	USA EDM 5000 Multi Users DB	<b>Local Co-ordinate Reference:</b>	Well Peppler Farms 1G-4H
<b>Company:</b>	EnCana Oil & Gas (USA) Inc	<b>TVD Reference:</b>	WELL @ 5066.0ft (Ensign)
<b>Project:</b>	DJ Wattenberg	<b>MD Reference:</b>	WELL @ 5066.0ft (Ensign)
<b>Site:</b>	S4-T3N-R68W (Peppler Farms)	<b>North Reference:</b>	True
<b>Well:</b>	Peppler Farms 1G-4H	<b>Survey Calculation Method:</b>	Minimum Curvature
<b>Wellbore:</b>	Hz		
<b>Design:</b>	Plan #1		

Planned Survey									
Measured Depth (ft)	Inclination (°)	Azimuth (°)	Vertical Depth (ft)	+N/-S (ft)	+E/-W (ft)	Vertical Section (ft)	Dogleg Rate (°/100ft)	Build Rate (°/100ft)	Comments / Formations
0.0	0.00	0.00	0.0	0.0	0.0	0.0	0.00	0.00	
68.0	0.00	0.00	68.0	0.0	0.0	0.0	0.00	0.00	Fox Hills
100.0	0.00	0.00	100.0	0.0	0.0	0.0	0.00	0.00	
200.0	0.00	0.00	200.0	0.0	0.0	0.0	0.00	0.00	
300.0	0.00	0.00	300.0	0.0	0.0	0.0	0.00	0.00	
400.0	0.00	0.00	400.0	0.0	0.0	0.0	0.00	0.00	KOP @ 400'
500.0	1.00	160.00	500.0	-0.8	0.3	-0.3	1.00	1.00	
600.0	2.00	160.00	600.0	-3.3	1.2	-1.2	1.00	1.00	
700.0	3.00	160.00	699.9	-7.4	2.7	-2.7	1.00	1.00	
800.0	4.00	160.00	799.7	-13.1	4.8	-4.8	1.00	1.00	
900.0	5.00	160.00	899.4	-20.5	7.5	-7.5	1.00	1.00	
1,000.0	6.00	160.00	998.9	-29.5	10.7	-10.7	1.00	1.00	
1,100.0	7.00	160.00	1,098.3	-40.1	14.6	-14.6	1.00	1.00	
1,200.0	8.00	160.00	1,197.4	-52.4	19.1	-19.1	1.00	1.00	
1,300.0	9.00	160.00	1,296.3	-66.3	24.1	-24.1	1.00	1.00	
1,400.0	10.00	160.00	1,394.9	-81.8	29.8	-29.8	1.00	1.00	EOB; Inc=10°
1,500.0	10.00	160.00	1,493.4	-98.1	35.7	-35.7	0.00	0.00	
1,600.0	10.00	160.00	1,591.9	-114.4	41.6	-41.6	0.00	0.00	
1,700.0	10.00	160.00	1,690.4	-130.7	47.6	-47.6	0.00	0.00	
1,800.0	10.00	160.00	1,788.9	-147.1	53.5	-53.5	0.00	0.00	
1,900.0	10.00	160.00	1,887.3	-163.4	59.5	-59.5	0.00	0.00	
2,000.0	10.00	160.00	1,985.8	-179.7	65.4	-65.4	0.00	0.00	
2,100.0	10.00	160.00	2,084.3	-196.0	71.3	-71.3	0.00	0.00	
2,200.0	10.00	160.00	2,182.8	-212.3	77.3	-77.3	0.00	0.00	
2,300.0	10.00	160.00	2,281.3	-228.7	83.2	-83.2	0.00	0.00	
2,400.0	10.00	160.00	2,379.7	-245.0	89.2	-89.2	0.00	0.00	
2,500.0	10.00	160.00	2,478.2	-261.3	95.1	-95.1	0.00	0.00	
2,600.0	10.00	160.00	2,576.7	-277.6	101.0	-101.0	0.00	0.00	
2,700.0	10.00	160.00	2,675.2	-293.9	107.0	-107.0	0.00	0.00	
2,800.0	10.00	160.00	2,773.7	-310.2	112.9	-112.9	0.00	0.00	
2,900.0	10.00	160.00	2,872.1	-326.6	118.9	-118.9	0.00	0.00	
3,000.0	10.00	160.00	2,970.6	-342.9	124.8	-124.8	0.00	0.00	
3,100.0	10.00	160.00	3,069.1	-359.2	130.7	-130.7	0.00	0.00	
3,200.0	10.00	160.00	3,167.6	-375.5	136.7	-136.7	0.00	0.00	
3,300.0	10.00	160.00	3,266.1	-391.8	142.6	-142.6	0.00	0.00	
3,400.0	10.00	160.00	3,364.5	-408.1	148.6	-148.6	0.00	0.00	
3,500.0	10.00	160.00	3,463.0	-424.5	154.5	-154.5	0.00	0.00	
3,600.0	10.00	160.00	3,561.5	-440.8	160.4	-160.4	0.00	0.00	
3,700.0	10.00	160.00	3,660.0	-457.1	166.4	-166.4	0.00	0.00	
3,800.0	10.00	160.00	3,758.5	-473.4	172.3	-172.3	0.00	0.00	
3,900.0	10.00	160.00	3,857.0	-489.7	178.2	-178.2	0.00	0.00	
4,000.0	10.00	160.00	3,955.4	-506.1	184.2	-184.2	0.00	0.00	
4,100.0	10.00	160.00	4,053.9	-522.4	190.1	-190.1	0.00	0.00	
4,111.3	10.00	160.00	4,065.0	-524.2	190.8	-190.8	0.00	0.00	Sussex
4,200.0	10.00	160.00	4,152.4	-538.7	196.1	-196.1	0.00	0.00	
4,210.0	10.00	160.00	4,162.2	-540.3	196.7	-196.7	0.00	0.00	Start Drop -1.00
4,300.0	9.10	160.00	4,251.0	-554.4	201.8	-201.8	1.00	-1.00	
4,400.0	8.10	160.00	4,349.9	-568.4	206.9	-206.9	1.00	-1.00	
4,410.2	8.00	160.00	4,360.0	-569.7	207.4	-207.4	1.00	-1.00	Sussex Marker
4,500.0	7.10	160.00	4,449.0	-580.8	211.4	-211.4	1.00	-1.00	
4,600.0	6.10	160.00	4,548.3	-591.6	215.3	-215.3	1.00	-1.00	
4,687.1	5.23	160.00	4,635.0	-599.7	218.3	-218.3	1.00	-1.00	Shannon

Planning Report

<b>Database:</b>	USA EDM 5000 Multi Users DB	<b>Local Co-ordinate Reference:</b>	Well Peppler Farms 1G-4H
<b>Company:</b>	EnCana Oil & Gas (USA) Inc	<b>TVD Reference:</b>	WELL @ 5066.0ft (Ensign)
<b>Project:</b>	DJ Wattenberg	<b>MD Reference:</b>	WELL @ 5066.0ft (Ensign)
<b>Site:</b>	S4-T3N-R68W (Peppler Farms)	<b>North Reference:</b>	True
<b>Well:</b>	Peppler Farms 1G-4H	<b>Survey Calculation Method:</b>	Minimum Curvature
<b>Wellbore:</b>	Hz		
<b>Design:</b>	Plan #1		

Planned Survey									
Measured Depth (ft)	Inclination (°)	Azimuth (°)	Vertical Depth (ft)	+N/-S (ft)	+E/-W (ft)	Vertical Section (ft)	Dogleg Rate (°/100ft)	Build Rate (°/100ft)	Comments / Formations
4,700.0	5.10	160.00	4,647.8	-600.8	218.7	-218.7	1.00	-1.00	
4,800.0	4.10	160.00	4,747.5	-608.3	221.4	-221.4	1.00	-1.00	
4,900.0	3.10	160.00	4,847.3	-614.2	223.6	-223.6	1.00	-1.00	
5,000.0	2.10	160.00	4,947.2	-618.5	225.1	-225.1	1.00	-1.00	
5,100.0	1.10	160.00	5,047.2	-621.1	226.1	-226.1	1.00	-1.00	
5,200.0	0.10	160.00	5,147.2	-622.1	226.4	-226.4	1.00	-1.00	
5,210.0	0.00	0.00	5,157.2	-622.1	226.4	-226.4	1.00	-1.00	EOD; Inc=0°
5,300.0	0.00	0.00	5,247.2	-622.1	226.4	-226.4	0.00	0.00	
5,400.0	0.00	0.00	5,347.2	-622.1	226.4	-226.4	0.00	0.00	
5,500.0	0.00	0.00	5,447.2	-622.1	226.4	-226.4	0.00	0.00	
5,600.0	0.00	0.00	5,547.2	-622.1	226.4	-226.4	0.00	0.00	
5,700.0	0.00	0.00	5,647.2	-622.1	226.4	-226.4	0.00	0.00	
5,800.0	0.00	0.00	5,747.2	-622.1	226.4	-226.4	0.00	0.00	
5,900.0	0.00	0.00	5,847.2	-622.1	226.4	-226.4	0.00	0.00	
6,000.0	0.00	0.00	5,947.2	-622.1	226.4	-226.4	0.00	0.00	
6,100.0	0.00	0.00	6,047.2	-622.1	226.4	-226.4	0.00	0.00	
6,200.0	0.00	0.00	6,147.2	-622.1	226.4	-226.4	0.00	0.00	
6,235.8	0.00	0.00	6,183.0	-622.1	226.4	-226.4	0.00	0.00	Teepee Buttes
6,300.0	0.00	0.00	6,247.2	-622.1	226.4	-226.4	0.00	0.00	
6,400.0	0.00	0.00	6,347.2	-622.1	226.4	-226.4	0.00	0.00	
6,455.6	0.00	0.00	6,402.8	-622.1	226.4	-226.4	0.00	0.00	Start 8° build @ 6455' MD
6,500.0	3.55	270.00	6,447.1	-622.1	225.1	-225.1	8.00	8.00	
6,600.0	11.55	270.00	6,546.2	-622.1	211.9	-211.9	8.00	8.00	
6,700.0	19.55	270.00	6,642.5	-622.1	185.1	-185.1	8.00	8.00	
6,800.0	27.55	270.00	6,734.1	-622.1	145.2	-145.2	8.00	8.00	
6,900.0	35.55	270.00	6,819.2	-622.1	92.9	-92.9	8.00	8.00	
7,000.0	43.55	270.00	6,896.2	-622.1	29.3	-29.3	8.00	8.00	
7,100.0	51.55	270.00	6,963.7	-622.1	-44.4	44.4	8.00	8.00	
7,200.0	59.55	270.00	7,020.2	-622.1	-126.8	126.8	8.00	8.00	
7,245.5	63.19	270.00	7,042.0	-622.1	-166.7	166.7	8.00	8.00	Sharon Springs
7,300.0	67.55	270.00	7,064.7	-622.2	-216.3	216.3	8.00	8.00	
7,400.0	75.55	270.00	7,096.3	-622.2	-311.0	311.0	8.00	8.00	
7,449.3	79.50	270.00	7,107.0	-622.2	-359.2	359.2	8.00	8.00	Niobara
7,500.0	83.55	270.00	7,114.5	-622.2	-409.3	409.3	8.00	8.00	
7,580.6	90.00	270.00	7,119.0	-622.2	-489.8	489.8	8.00	8.00	LP @ 7119' TVD; 90°
7,600.0	90.00	270.00	7,119.0	-622.2	-509.1	509.1	0.00	0.00	
7,700.0	90.00	270.00	7,119.0	-622.2	-609.1	609.1	0.00	0.00	
7,800.0	90.00	270.00	7,119.0	-622.2	-709.1	709.1	0.00	0.00	
7,900.0	90.00	270.00	7,119.0	-622.2	-809.1	809.1	0.00	0.00	
8,000.0	90.00	270.00	7,119.0	-622.2	-909.1	909.1	0.00	0.00	
8,100.0	90.00	270.00	7,119.0	-622.2	-1,009.1	1,009.1	0.00	0.00	
8,200.0	90.00	270.00	7,119.0	-622.2	-1,109.1	1,109.1	0.00	0.00	
8,300.0	90.00	270.00	7,119.0	-622.2	-1,209.1	1,209.1	0.00	0.00	
8,400.0	90.00	270.00	7,119.0	-622.2	-1,309.1	1,309.1	0.00	0.00	
8,500.0	90.00	270.00	7,119.0	-622.2	-1,409.1	1,409.1	0.00	0.00	
8,600.0	90.00	270.00	7,119.0	-622.3	-1,509.1	1,509.1	0.00	0.00	
8,700.0	90.00	270.00	7,119.0	-622.3	-1,609.1	1,609.1	0.00	0.00	
8,800.0	90.00	270.00	7,119.0	-622.3	-1,709.1	1,709.1	0.00	0.00	
8,900.0	90.00	270.00	7,119.0	-622.3	-1,809.1	1,809.1	0.00	0.00	
9,000.0	90.00	270.00	7,119.0	-622.3	-1,909.1	1,909.1	0.00	0.00	
9,100.0	90.00	270.00	7,119.0	-622.3	-2,009.1	2,009.1	0.00	0.00	
9,200.0	90.00	270.00	7,119.0	-622.3	-2,109.1	2,109.1	0.00	0.00	

## Planning Report

<b>Database:</b> USA EDM 5000 Multi Users DB	<b>Local Co-ordinate Reference:</b> Well Pepler Farms 1G-4H
<b>Company:</b> EnCana Oil & Gas (USA) Inc	<b>TVD Reference:</b> WELL @ 5066.0ft (Ensign)
<b>Project:</b> DJ Wattenberg	<b>MD Reference:</b> WELL @ 5066.0ft (Ensign)
<b>Site:</b> S4-T3N-R68W (Pepler Farms)	<b>North Reference:</b> True
<b>Well:</b> Pepler Farms 1G-4H	<b>Survey Calculation Method:</b> Minimum Curvature
<b>Wellbore:</b> Hz	
<b>Design:</b> Plan #1	

Planned Survey									
Measured Depth (ft)	Inclination (°)	Azimuth (°)	Vertical Depth (ft)	+N/-S (ft)	+E/-W (ft)	Vertical Section (ft)	Dogleg Rate (°/100ft)	Build Rate (°/100ft)	Comments / Formations
9,300.0	90.00	270.00	7,119.0	-622.3	-2,209.1	2,209.1	0.00	0.00	
9,400.0	90.00	270.00	7,119.0	-622.3	-2,309.1	2,309.1	0.00	0.00	
9,500.0	90.00	270.00	7,119.0	-622.3	-2,409.1	2,409.1	0.00	0.00	
9,600.0	90.00	270.00	7,119.0	-622.3	-2,509.1	2,509.1	0.00	0.00	
9,700.0	90.00	270.00	7,119.0	-622.3	-2,609.1	2,609.1	0.00	0.00	
9,800.0	90.00	270.00	7,119.0	-622.3	-2,709.1	2,709.1	0.00	0.00	
9,900.0	90.00	270.00	7,119.0	-622.4	-2,809.1	2,809.1	0.00	0.00	
10,000.0	90.00	270.00	7,119.0	-622.4	-2,909.1	2,909.1	0.00	0.00	
10,100.0	90.00	270.00	7,119.0	-622.4	-3,009.1	3,009.1	0.00	0.00	
10,200.0	90.00	270.00	7,119.0	-622.4	-3,109.1	3,109.1	0.00	0.00	
10,300.0	90.00	270.00	7,119.0	-622.4	-3,209.1	3,209.1	0.00	0.00	
10,400.0	90.00	270.00	7,119.0	-622.4	-3,309.1	3,309.1	0.00	0.00	
10,500.0	90.00	270.00	7,119.0	-622.4	-3,409.1	3,409.1	0.00	0.00	
10,600.0	90.00	270.00	7,119.0	-622.4	-3,509.1	3,509.1	0.00	0.00	
10,700.0	90.00	270.00	7,119.0	-622.4	-3,609.1	3,609.1	0.00	0.00	
10,800.0	90.00	270.00	7,119.0	-622.4	-3,709.1	3,709.1	0.00	0.00	
10,900.0	90.00	270.00	7,119.0	-622.4	-3,809.1	3,809.1	0.00	0.00	
11,000.0	90.00	270.00	7,119.0	-622.4	-3,909.1	3,909.1	0.00	0.00	
11,100.0	90.00	270.00	7,119.0	-622.5	-4,009.1	4,009.1	0.00	0.00	
11,200.0	90.00	270.00	7,119.0	-622.5	-4,109.1	4,109.1	0.00	0.00	
11,300.0	90.00	270.00	7,119.0	-622.5	-4,209.1	4,209.1	0.00	0.00	
11,400.0	90.00	270.00	7,119.0	-622.5	-4,309.1	4,309.1	0.00	0.00	
11,500.0	90.00	270.00	7,119.0	-622.5	-4,409.1	4,409.1	0.00	0.00	
11,600.0	90.00	270.00	7,119.0	-622.5	-4,509.1	4,509.1	0.00	0.00	
11,679.3	90.00	270.00	7,119.0	-622.5	-4,588.4	4,588.4	0.00	0.00	TD at 11679.3 - Pepler Farms 1G-4H PBHL

Targets									
Target Name	Dip Angle (°)	Dip Dir. (°)	TVD (ft)	+N/-S (ft)	+E/-W (ft)	Northing (ft)	Easting (ft)	Latitude	Longitude
Pepler Farms 1G-4H P - hit/miss target - Shape - Point	0.00	0.00	7,119.0	-622.5	-4,588.4	1,336,586.58	3,135,073.57	40.256310	-105.016060

Formations						
Measured Depth (ft)	Vertical Depth (ft)	Name	Lithology	Dip (°)	Dip Direction (°)	
68.0	68.0	Fox Hills				
4,111.3	4,065.0	Sussex				
4,410.2	4,360.0	Sussex Marker				
4,687.1	4,635.0	Shannon				
6,235.8	6,183.0	Teepee Buttes				
7,245.5	7,042.0	Sharon Springs				
7,449.3	7,107.0	Niobrara				

## Planning Report

<b>Database:</b>	USA EDM 5000 Multi Users DB	<b>Local Co-ordinate Reference:</b>	Well Pepler Farms 1G-4H
<b>Company:</b>	EnCana Oil & Gas (USA) Inc	<b>TVD Reference:</b>	WELL @ 5066.0ft (Ensign)
<b>Project:</b>	DJ Wattenberg	<b>MD Reference:</b>	WELL @ 5066.0ft (Ensign)
<b>Site:</b>	S4-T3N-R68W (Pepler Farms)	<b>North Reference:</b>	True
<b>Well:</b>	Pepler Farms 1G-4H	<b>Survey Calculation Method:</b>	Minimum Curvature
<b>Wellbore:</b>	Hz		
<b>Design:</b>	Plan #1		

Plan Annotations				
Measured Depth (ft)	Vertical Depth (ft)	Local Coordinates		Comment
		+N/-S (ft)	+E/-W (ft)	
400.0	400.0	0.0	0.0	KOP @ 400'
1,400.0	1,394.9	-81.8	29.8	EOB; Inc=10°
4,210.0	4,162.2	-540.3	196.7	Start Drop -1.00
5,210.0	5,157.2	-622.1	226.4	EOD; Inc=0°
6,455.6	6,402.8	-622.1	226.4	Start 8° build @ 6455' MD
7,580.6	7,119.0	-622.2	-489.8	LP @ 7119' TVD; 90°
11,679.3	7,119.0	-622.5	-4,588.4	TD at 11679.3

# **EnCana Oil & Gas (USA) Inc**

**DJ Wattenberg**

**S4-T3N-R68W (Pepler Farms)**

**Pepler Farms 1G-4H**

**Hz**

**Plan #1**

## **Anticollision Report**

**24 January, 2013**

## Anticollision Report

<b>Company:</b>	EnCana Oil & Gas (USA) Inc	<b>Local Co-ordinate Reference:</b>	Well Pepler Farms 1G-4H
<b>Project:</b>	DJ Wattenberg	<b>TVD Reference:</b>	WELL @ 5066.0ft (Ensign)
<b>Reference Site:</b>	S4-T3N-R68W (Pepler Farms)	<b>MD Reference:</b>	WELL @ 5066.0ft (Ensign)
<b>Site Error:</b>	0.0ft	<b>North Reference:</b>	True
<b>Reference Well:</b>	Pepler Farms 1G-4H	<b>Survey Calculation Method:</b>	Minimum Curvature
<b>Well Error:</b>	0.0ft	<b>Output errors are at</b>	2.00 sigma
<b>Reference Wellbore</b>	Hz	<b>Database:</b>	USA EDM 5000 Multi Users DB
<b>Reference Design:</b>	Plan #1	<b>Offset TVD Reference:</b>	Offset Datum

<b>Reference</b>	Plan #1		
<b>Filter type:</b>	NO GLOBAL FILTER: Using user defined selection & filtering criteria		
<b>Interpolation Method:</b>	MD Interval 100.0ft	<b>Error Model:</b>	Systematic Ellipse
<b>Depth Range:</b>	Unlimited	<b>Scan Method:</b>	Closest Approach 3D
<b>Results Limited by:</b>	Maximum center-center distance of 500.0ft	<b>Error Surface:</b>	Elliptical Conic
<b>Warning Levels Evaluated at:</b>	2.00 Sigma		

<b>Survey Tool Program</b>	<b>Date</b>	1/24/2013		
<b>From (ft)</b>	<b>To (ft)</b>	<b>Survey (Wellbore)</b>	<b>Tool Name</b>	<b>Description</b>
0.0	11,678.5	Plan #1 (Hz)	MWD	Geolink MWD

Site Name	Reference Measured Depth (ft)	Offset Measured Depth (ft)	Distance Between Centres (ft)	Distance Between Ellipses (ft)	Separation Factor	Warning
<b>Summary</b>						
<b>Offset Well - Wellbore - Design</b>						
S4-T3N-R68W (Pepler Farms)						
Pepler Farms 1A-4H - Hz - Plan #1	166.0	168.0	61.9	61.4	115.221	CC
Pepler Farms 1A-4H - Hz - Plan #1	200.0	202.0	61.9	61.3	94.385	ES
Pepler Farms 1A-4H - Hz - Plan #1	600.0	590.7	92.4	90.3	45.410	SF
Pepler Farms 1B-4H - Hz - Plan #1	266.3	267.3	51.0	50.1	57.560	CC
Pepler Farms 1B-4H - Hz - Plan #1	300.0	301.0	51.0	50.0	50.820	ES
Pepler Farms 1B-4H - Hz - Plan #1	700.0	696.3	71.9	69.5	30.065	SF
Pepler Farms 1C-4H - Hz - Plan #1	366.3	367.3	40.1	38.8	32.444	CC
Pepler Farms 1C-4H - Hz - Plan #1	400.0	401.0	40.1	38.7	29.625	ES
Pepler Farms 1C-4H - Hz - Plan #1	600.0	599.5	46.7	44.6	22.783	SF
Pepler Farms 1D-4H - Hz - Plan #1	400.0	401.0	29.1	27.8	21.545	CC, ES
Pepler Farms 1D-4H - Hz - Plan #1	700.0	700.3	37.3	34.9	15.566	SF
Pepler Farms 1E-4H - Hz - Plan #1	400.0	400.0	21.9	20.5	16.180	CC, ES
Pepler Farms 1E-4H - Hz - Plan #1	700.0	699.9	29.4	27.0	12.248	SF
Pepler Farms 1F-4H - Hz - Plan #1	400.0	400.0	10.9	9.6	8.090	CC, ES
Pepler Farms 1F-4H - Hz - Plan #1	11,679.3	11,935.4	414.1	240.3	2.382	SF
Pepler Farms 1H-4H - Hz - Plan #1	200.0	200.0	10.9	10.3	16.742	CC, ES
Pepler Farms 1H-4H - Hz - Plan #1	11,679.3	11,970.2	411.3	238.8	2.384	SF
PEPLER FARMS 4-2-4 (EXISTING) - Existing - Existing						Out of range
PEPLER FARMS 6-4-4 (EXISTING) - Existing - Existing	8,150.5	7,724.6	340.3	287.8	6.492	CC, ES
PEPLER FARMS 6-4-4 (EXISTING) - Existing - Existing	8,200.0	7,724.6	343.8	290.3	6.422	SF

CC - Min centre to center distance or convergent point, SF - min separation factor, ES - min ellipse separation

## Anticollision Report

<b>Company:</b>	EnCana Oil & Gas (USA) Inc	<b>Local Co-ordinate Reference:</b>	Well Pepler Farms 1G-4H
<b>Project:</b>	DJ Wattenberg	<b>TVD Reference:</b>	WELL @ 5066.0ft (Ensign)
<b>Reference Site:</b>	S4-T3N-R68W (Pepler Farms)	<b>MD Reference:</b>	WELL @ 5066.0ft (Ensign)
<b>Site Error:</b>	0.0ft	<b>North Reference:</b>	True
<b>Reference Well:</b>	Pepler Farms 1G-4H	<b>Survey Calculation Method:</b>	Minimum Curvature
<b>Well Error:</b>	0.0ft	<b>Output errors are at</b>	2.00 sigma
<b>Reference Wellbore</b>	Hz	<b>Database:</b>	USA EDM 5000 Multi Users DB
<b>Reference Design:</b>	Plan #1	<b>Offset TVD Reference:</b>	Offset Datum

Offset Design													Offset Site Error:	0.0 ft
S4-T3N-R68W (Pepler Farms) - Pepler Farms 1A-4H - Hz - Plan #1													Survey Program:	0-MWD
Reference		Offset		Semi Major Axis			Distance				Total Uncertainty Axis	Separation Factor	Warning	
Measured Depth (ft)	Vertical Depth (ft)	Measured Depth (ft)	Vertical Depth (ft)	Reference (ft)	Offset (ft)	Highside Toolface (°)	Offset Wellbore Centre +N/-S (ft)	+E/-W (ft)	Between Centres (ft)	Between Ellipses (ft)				
0.0	0.0	2.0	2.0	0.0	0.0	0.00	61.9	0.0	61.9					
100.0	100.0	102.0	102.0	0.2	0.2	0.00	61.9	0.0	61.9	61.6	0.31	201.619		
166.0	166.0	168.0	168.0	0.3	0.3	0.00	61.9	0.0	61.9	61.4	0.54	115.221 CC		
200.0	200.0	202.0	202.0	0.3	0.3	0.00	61.9	0.0	61.9	61.3	0.66	94.385 ES		
300.0	300.0	300.0	300.0	0.5	0.5	0.25	63.7	0.3	63.7	62.7	1.00	63.564		
400.0	400.0	397.5	397.3	0.7	0.7	0.89	68.7	1.1	68.8	67.5	1.35	51.072		
500.0	500.0	494.6	494.0	0.9	0.9	-158.43	76.9	2.4	78.1	76.4	1.69	46.192		
600.0	600.0	590.7	589.5	1.0	1.2	-158.03	88.2	4.2	92.4	90.3	2.03	45.410 SF		
700.0	699.9	685.5	683.2	1.2	1.5	-157.83	102.5	6.4	111.5	109.1	2.38	46.935		
800.0	799.7	778.6	774.7	1.4	1.8	-157.77	119.5	9.1	135.4	132.6	2.71	49.867		
900.0	899.4	869.8	863.7	1.6	2.2	-157.78	138.9	12.2	163.9	160.8	3.05	53.707		
1,000.0	998.9	958.6	949.8	1.8	2.6	-157.81	160.6	15.6	196.9	193.5	3.39	58.154		
1,100.0	1,098.3	1,044.9	1,032.7	2.1	3.0	-157.85	184.1	19.4	234.2	230.5	3.72	63.021		
1,200.0	1,197.4	1,136.0	1,119.8	2.3	3.5	-157.93	210.4	23.5	274.6	270.6	4.06	67.665		
1,300.0	1,296.3	1,226.8	1,206.7	2.6	4.0	-158.07	236.6	27.7	316.5	312.1	4.40	71.896		
1,400.0	1,394.9	1,316.9	1,292.8	2.9	4.4	-158.25	262.6	31.8	359.8	355.1	4.75	75.802		
1,500.0	1,493.4	1,406.6	1,378.6	3.3	4.9	-158.58	288.6	35.9	403.9	398.8	5.10	79.133		
1,600.0	1,591.9	1,496.4	1,464.5	3.6	5.4	-158.84	314.5	40.0	448.0	442.5	5.46	82.008		
1,700.0	1,690.4	1,586.1	1,550.3	3.9	5.9	-159.06	340.4	44.1	492.1	486.3	5.82	84.514		

CC - Min centre to center distance or convergent point, SF - min separation factor, ES - min ellipse separation

### Anticollision Report

<b>Company:</b>	EnCana Oil & Gas (USA) Inc	<b>Local Co-ordinate Reference:</b>	Well Peppler Farms 1G-4H
<b>Project:</b>	DJ Wattenberg	<b>TVD Reference:</b>	WELL @ 5066.0ft (Ensign)
<b>Reference Site:</b>	S4-T3N-R68W (Peppler Farms)	<b>MD Reference:</b>	WELL @ 5066.0ft (Ensign)
<b>Site Error:</b>	0.0ft	<b>North Reference:</b>	True
<b>Reference Well:</b>	Peppler Farms 1G-4H	<b>Survey Calculation Method:</b>	Minimum Curvature
<b>Well Error:</b>	0.0ft	<b>Output errors are at</b>	2.00 sigma
<b>Reference Wellbore</b>	Hz	<b>Database:</b>	USA EDM 5000 Multi Users DB
<b>Reference Design:</b>	Plan #1	<b>Offset TVD Reference:</b>	Offset Datum

Offset Design													Offset Site Error:	0.0 ft	
Survey Program: 0-MWD													Offset Well Error:		0.0 ft
Reference															
Offset				Semi Major Axis			Distance								
Measured Depth (ft)	Vertical Depth (ft)	Measured Depth (ft)	Vertical Depth (ft)	Reference (ft)	Offset (ft)	Highside Toolface (°)	Offset Wellbore Centre +N/-S (ft)	+E/-W (ft)	Between Centres (ft)	Between Ellipses (ft)	Total Uncertainty Axis	Separation Factor	Warning		
0.0	0.0	1.0	1.0	0.0	0.0	0.00	51.0	0.0	51.0						
100.0	100.0	101.0	101.0	0.2	0.2	0.00	51.0	0.0	51.0	50.7	0.31	166.977			
200.0	200.0	201.0	201.0	0.3	0.3	0.00	51.0	0.0	51.0	50.3	0.65	77.923			
266.3	266.3	267.3	267.3	0.4	0.4	0.00	51.0	0.0	51.0	50.1	0.89	57.560 CC			
300.0	300.0	301.0	301.0	0.5	0.5	0.00	51.0	0.0	51.0	50.0	1.00	50.820 ES			
400.0	400.0	400.0	400.0	0.7	0.7	0.20	51.9	0.2	51.9	50.5	1.35	38.392			
500.0	500.0	499.2	499.1	0.9	0.9	-159.54	54.4	0.7	55.2	53.5	1.70	32.520			
600.0	600.0	597.9	597.8	1.0	1.0	-159.54	58.6	1.6	61.9	59.9	2.05	30.274			
700.0	699.9	696.3	696.0	1.2	1.2	-159.74	64.4	2.9	71.9	69.5	2.39	30.065 SF			
800.0	799.7	794.1	793.5	1.4	1.4	-160.02	71.8	4.5	85.2	82.5	2.74	31.112			
900.0	899.4	891.2	890.1	1.6	1.7	-160.34	80.8	6.4	101.8	98.7	3.09	32.983			
1,000.0	998.9	987.4	985.7	1.8	1.9	-160.63	91.3	8.7	121.6	118.2	3.43	35.418			
1,100.0	1,098.3	1,082.5	1,080.1	2.1	2.1	-160.89	103.2	11.3	144.6	140.8	3.78	38.254			
1,200.0	1,197.4	1,176.5	1,173.1	2.3	2.4	-161.12	116.4	14.1	170.8	166.6	4.13	41.377			
1,300.0	1,296.3	1,269.2	1,264.6	2.6	2.7	-161.30	130.9	17.3	200.0	195.6	4.47	44.711			
1,400.0	1,394.9	1,360.5	1,354.5	2.9	3.0	-161.44	146.7	20.7	232.4	227.5	4.82	48.198			
1,500.0	1,493.4	1,450.6	1,442.8	3.3	3.3	-161.61	163.5	24.3	266.9	261.7	5.18	51.564			
1,600.0	1,591.9	1,541.6	1,531.9	3.6	3.7	-161.68	181.8	28.3	302.8	297.2	5.54	54.690			
1,700.0	1,690.4	1,634.9	1,623.2	3.9	4.0	-161.72	200.8	32.4	338.8	332.9	5.90	57.421			
1,800.0	1,788.9	1,728.2	1,714.4	4.2	4.4	-161.76	219.7	36.5	374.9	368.6	6.27	59.822			
1,900.0	1,887.3	1,821.4	1,805.6	4.6	4.7	-161.79	238.7	40.6	410.9	404.3	6.63	61.950			
2,000.0	1,985.8	1,914.7	1,896.9	4.9	5.1	-161.82	257.7	44.7	447.0	440.0	7.00	63.847			
2,100.0	2,084.3	2,008.0	1,988.1	5.3	5.5	-161.84	276.6	48.8	483.0	475.7	7.37	65.549			

CC - Min centre to center distance or convergent point, SF - min separation factor, ES - min ellipse separation

### Anticollision Report

<b>Company:</b>	EnCana Oil & Gas (USA) Inc	<b>Local Co-ordinate Reference:</b>	Well Peppler Farms 1G-4H
<b>Project:</b>	DJ Wattenberg	<b>TVD Reference:</b>	WELL @ 5066.0ft (Ensign)
<b>Reference Site:</b>	S4-T3N-R68W (Peppler Farms)	<b>MD Reference:</b>	WELL @ 5066.0ft (Ensign)
<b>Site Error:</b>	0.0ft	<b>North Reference:</b>	True
<b>Reference Well:</b>	Peppler Farms 1G-4H	<b>Survey Calculation Method:</b>	Minimum Curvature
<b>Well Error:</b>	0.0ft	<b>Output errors are at</b>	2.00 sigma
<b>Reference Wellbore</b>	Hz	<b>Database:</b>	USA EDM 5000 Multi Users DB
<b>Reference Design:</b>	Plan #1	<b>Offset TVD Reference:</b>	Offset Datum

Offset Design													Offset Site Error:	0.0 ft	
Survey Program: 0-MWD													Offset Well Error:		0.0 ft
Reference															
Offset				Semi Major Axis			Distance								
Measured Depth (ft)	Vertical Depth (ft)	Measured Depth (ft)	Vertical Depth (ft)	Reference (ft)	Offset (ft)	Highside Toolface (°)	Offset Wellbore Centre +N/-S (ft)	+E/-W (ft)	Between Centres (ft)	Between Ellipses (ft)	Total Uncertainty Axis	Separation Factor	Warning		
0.0	0.0	1.0	1.0	0.0	0.0	0.00	40.1	0.0	40.1						
100.0	100.0	101.0	101.0	0.2	0.2	0.00	40.1	0.0	40.1	39.8	0.31	131.196			
200.0	200.0	201.0	201.0	0.3	0.3	0.00	40.1	0.0	40.1	39.4	0.65	61.225			
300.0	300.0	301.0	301.0	0.5	0.5	0.00	40.1	0.0	40.1	39.1	1.00	39.929			
366.3	366.3	367.3	367.3	0.6	0.6	0.00	40.1	0.0	40.1	38.8	1.24	32.444 CC			
400.0	400.0	401.0	401.0	0.7	0.7	0.00	40.1	0.0	40.1	38.7	1.35	29.625 ES			
500.0	500.0	500.0	500.0	0.9	0.9	-160.01	40.9	0.3	41.7	40.0	1.70	24.548			
600.0	600.0	599.5	599.4	1.0	1.0	-160.07	43.4	1.1	46.7	44.6	2.05	22.783 SF			
700.0	699.9	698.3	698.2	1.2	1.2	-160.13	47.4	2.5	54.9	52.5	2.40	22.899			
800.0	799.7	796.7	796.3	1.4	1.4	-160.19	53.1	4.4	66.3	63.6	2.74	24.167			
900.0	899.4	894.4	893.8	1.6	1.6	-160.23	60.3	6.8	81.0	77.9	3.09	26.188			
1,000.0	998.9	991.3	990.3	1.8	1.8	-160.26	68.9	9.8	98.9	95.5	3.44	28.721			
1,100.0	1,098.3	1,087.4	1,085.7	2.1	2.0	-160.27	79.1	13.2	120.0	116.2	3.80	31.612			
1,200.0	1,197.4	1,182.3	1,179.9	2.3	2.3	-160.26	90.6	17.1	144.2	140.0	4.15	34.755			
1,300.0	1,296.3	1,276.1	1,272.7	2.6	2.6	-160.24	103.4	21.4	171.5	167.0	4.50	38.076			
1,400.0	1,394.9	1,368.5	1,363.9	2.9	2.8	-160.21	117.4	26.2	201.8	196.9	4.86	41.523			
1,500.0	1,493.4	1,462.1	1,456.1	3.3	3.1	-160.24	132.7	31.4	234.0	228.8	5.23	44.756			
1,600.0	1,591.9	1,556.7	1,549.3	3.6	3.4	-160.26	148.3	36.6	266.4	260.8	5.60	47.544			
1,700.0	1,690.4	1,651.4	1,642.5	3.9	3.8	-160.27	163.9	41.9	298.7	292.7	5.98	49.969			
1,800.0	1,788.9	1,746.0	1,735.7	4.2	4.1	-160.28	179.4	47.2	331.0	324.7	6.35	52.096			
1,900.0	1,887.3	1,840.6	1,828.9	4.6	4.4	-160.29	195.0	52.4	363.3	356.6	6.73	53.977			
2,000.0	1,985.8	1,935.3	1,922.1	4.9	4.7	-160.30	210.6	57.7	395.7	388.6	7.11	55.649			
2,100.0	2,084.3	2,029.9	2,015.3	5.3	5.0	-160.30	226.1	63.0	428.0	420.5	7.49	57.147			
2,200.0	2,182.8	2,124.5	2,108.5	5.6	5.3	-160.31	241.7	68.2	460.3	452.5	7.87	58.495			
2,300.0	2,281.3	2,219.2	2,201.7	5.9	5.7	-160.31	257.3	73.5	492.6	484.4	8.25	59.714			

CC - Min centre to center distance or convergent point, SF - min separation factor, ES - min ellipse separation

### Anticollision Report

<b>Company:</b>	EnCana Oil & Gas (USA) Inc	<b>Local Co-ordinate Reference:</b>	Well Peppler Farms 1G-4H
<b>Project:</b>	DJ Wattenberg	<b>TVD Reference:</b>	WELL @ 5066.0ft (Ensign)
<b>Reference Site:</b>	S4-T3N-R68W (Peppler Farms)	<b>MD Reference:</b>	WELL @ 5066.0ft (Ensign)
<b>Site Error:</b>	0.0ft	<b>North Reference:</b>	True
<b>Reference Well:</b>	Peppler Farms 1G-4H	<b>Survey Calculation Method:</b>	Minimum Curvature
<b>Well Error:</b>	0.0ft	<b>Output errors are at</b>	2.00 sigma
<b>Reference Wellbore</b>	Hz	<b>Database:</b>	USA EDM 5000 Multi Users DB
<b>Reference Design:</b>	Plan #1	<b>Offset TVD Reference:</b>	Offset Datum

Offset Design													Offset Site Error:	0.0 ft	
Survey Program: 0-MWD													Offset Well Error:		0.0 ft
Reference															
Offset				Semi Major Axis			Distance								
Measured Depth (ft)	Vertical Depth (ft)	Measured Depth (ft)	Vertical Depth (ft)	Reference (ft)	Offset (ft)	Highside Toolface (°)	Offset Wellbore Centre +N/-S (ft)	+E/-W (ft)	Between Centres (ft)	Between Ellipses (ft)	Total Uncertainty Axis	Separation Factor	Warning		
0.0	0.0	1.0	1.0	0.0	0.0	0.00	29.1	0.0	29.1						
100.0	100.0	101.0	101.0	0.2	0.2	0.00	29.1	0.0	29.1	28.8	0.31	95.415			
200.0	200.0	201.0	201.0	0.3	0.3	0.00	29.1	0.0	29.1	28.5	0.65	44.527			
300.0	300.0	301.0	301.0	0.5	0.5	0.00	29.1	0.0	29.1	28.1	1.00	29.039			
400.0	400.0	401.0	401.0	0.7	0.7	0.00	29.1	0.0	29.1	27.8	1.35	21.545 CC, ES			
500.0	500.0	501.0	501.0	0.9	0.9	-160.57	29.1	0.0	30.0	28.3	1.70	17.610			
600.0	600.0	601.0	601.0	1.0	1.0	-162.10	29.1	0.0	32.4	30.4	2.05	15.824			
700.0	699.9	700.3	700.3	1.2	1.2	-163.36	29.9	0.5	37.3	34.9	2.40	15.566 SF			
800.0	799.7	799.4	799.4	1.4	1.4	-163.61	32.1	1.9	45.3	42.5	2.75	16.491			
900.0	899.4	898.1	898.0	1.6	1.6	-163.22	35.7	4.2	56.3	53.2	3.10	18.187			
1,000.0	998.9	996.2	995.9	1.8	1.7	-162.55	40.7	7.4	70.4	66.9	3.45	20.406			
1,100.0	1,098.3	1,093.7	1,093.1	2.1	1.9	-161.79	47.0	11.5	87.5	83.7	3.80	22.990			
1,200.0	1,197.4	1,190.3	1,189.2	2.3	2.1	-161.05	54.7	16.4	107.6	103.4	4.16	25.828			
1,300.0	1,296.3	1,285.9	1,284.3	2.6	2.4	-160.37	63.7	22.1	130.6	126.1	4.53	28.840			
1,400.0	1,394.9	1,380.5	1,378.0	2.9	2.6	-159.75	73.9	28.6	156.7	151.8	4.90	31.965			
1,500.0	1,493.4	1,474.0	1,470.7	3.3	2.9	-159.21	85.2	35.8	184.8	179.6	5.29	34.967			
1,600.0	1,591.9	1,566.8	1,562.2	3.6	3.1	-158.58	97.7	43.8	214.3	208.7	5.68	37.751			
1,700.0	1,690.4	1,660.9	1,654.9	3.9	3.4	-157.95	111.4	52.6	244.9	238.8	6.08	40.300			
1,800.0	1,788.9	1,756.1	1,748.6	4.2	3.7	-157.44	125.3	61.5	275.6	269.1	6.48	42.517			
1,900.0	1,887.3	1,851.2	1,842.3	4.6	4.0	-157.03	139.2	70.4	306.3	299.4	6.89	44.460			
2,000.0	1,985.8	1,946.4	1,936.1	4.9	4.3	-156.69	153.1	79.3	337.0	329.7	7.30	46.174			
2,100.0	2,084.3	2,041.5	2,029.8	5.3	4.7	-156.41	167.1	88.2	367.7	360.0	7.71	47.697			
2,200.0	2,182.8	2,136.7	2,123.5	5.6	5.0	-156.18	181.0	97.1	398.4	390.3	8.12	49.058			
2,300.0	2,281.3	2,231.8	2,217.2	5.9	5.3	-155.97	194.9	106.0	429.1	420.6	8.53	50.281			
2,400.0	2,379.7	2,327.0	2,310.9	6.3	5.6	-155.80	208.8	114.9	459.9	450.9	8.95	51.385			
2,500.0	2,478.2	2,422.1	2,404.6	6.6	5.9	-155.64	222.7	123.8	490.6	481.2	9.36	52.386			

## Anticollision Report

<b>Company:</b>	EnCana Oil & Gas (USA) Inc	<b>Local Co-ordinate Reference:</b>	Well Pepler Farms 1G-4H
<b>Project:</b>	DJ Wattenberg	<b>TVD Reference:</b>	WELL @ 5066.0ft (Ensign)
<b>Reference Site:</b>	S4-T3N-R68W (Pepler Farms)	<b>MD Reference:</b>	WELL @ 5066.0ft (Ensign)
<b>Site Error:</b>	0.0ft	<b>North Reference:</b>	True
<b>Reference Well:</b>	Pepler Farms 1G-4H	<b>Survey Calculation Method:</b>	Minimum Curvature
<b>Well Error:</b>	0.0ft	<b>Output errors are at</b>	2.00 sigma
<b>Reference Wellbore</b>	Hz	<b>Database:</b>	USA EDM 5000 Multi Users DB
<b>Reference Design:</b>	Plan #1	<b>Offset TVD Reference:</b>	Offset Datum

Offset Design													Offset Site Error:	0.0 ft	
Survey Program: 0-MWD													Offset Well Error:		0.0 ft
Reference															
Offset				Semi Major Axis			Distance								
Measured Depth (ft)	Vertical Depth (ft)	Measured Depth (ft)	Vertical Depth (ft)	Reference (ft)	Offset (ft)	Highside Toolface (°)	Offset Wellbore Centre +N/-S (ft)	+E/-W (ft)	Between Centres (ft)	Between Ellipses (ft)	Total Uncertainty Axis	Separation Factor	Warning		
0.0	0.0	0.0	0.0	0.0	0.0	0.00	21.9	0.0	21.9						
100.0	100.0	100.0	100.0	0.2	0.2	0.00	21.9	0.0	21.9	21.6	0.30	71.973			
200.0	200.0	200.0	200.0	0.3	0.3	0.00	21.9	0.0	21.9	21.2	0.65	33.485			
300.0	300.0	300.0	300.0	0.5	0.5	0.00	21.9	0.0	21.9	20.9	1.00	21.818			
400.0	400.0	400.0	400.0	0.7	0.7	0.00	21.9	0.0	21.9	20.5	1.35	16.180	CC, ES		
500.0	500.0	500.0	500.0	0.9	0.8	-160.75	21.9	0.0	22.7	21.0	1.70	13.342			
600.0	600.0	600.0	600.0	1.0	1.0	-162.71	21.9	0.0	25.2	23.1	2.05	12.284			
700.0	699.9	699.9	699.9	1.2	1.2	-165.23	21.9	0.0	29.4	27.0	2.40	12.248	SF		
800.0	799.7	799.7	799.7	1.4	1.4	-167.74	21.9	0.0	35.3	32.6	2.74	12.860			
900.0	899.4	899.3	899.3	1.6	1.5	-168.80	22.1	0.8	43.1	40.0	3.09	13.925			
1,000.0	998.9	998.8	998.7	1.8	1.7	-167.99	22.7	3.4	52.7	49.2	3.44	15.304			
1,100.0	1,098.3	1,098.0	1,097.8	2.1	1.9	-166.22	23.7	7.5	64.2	60.4	3.80	16.901			
1,200.0	1,197.4	1,196.9	1,196.5	2.3	2.1	-164.04	25.0	13.4	77.7	73.5	4.16	18.654			
1,300.0	1,296.3	1,295.3	1,294.7	2.6	2.3	-161.78	26.8	20.8	93.2	88.6	4.54	20.507			
1,400.0	1,394.9	1,393.3	1,392.3	2.9	2.5	-159.59	29.0	29.9	110.8	105.9	4.94	22.414			
1,500.0	1,493.4	1,490.9	1,489.2	3.3	2.7	-157.46	31.5	40.5	129.8	124.4	5.37	24.156			
1,600.0	1,591.9	1,588.1	1,585.6	3.6	3.0	-155.27	34.4	52.6	149.4	143.5	5.83	25.637			
1,700.0	1,690.4	1,685.8	1,682.4	3.9	3.2	-153.24	37.5	65.9	169.5	163.2	6.30	26.912			
1,800.0	1,788.9	1,783.6	1,779.2	4.2	3.5	-151.64	40.7	79.1	189.7	183.0	6.78	27.997			
1,900.0	1,887.3	1,881.4	1,876.1	4.6	3.7	-150.35	43.9	92.3	210.1	202.9	7.26	28.928			
2,000.0	1,985.8	1,979.2	1,972.9	4.9	4.0	-149.28	47.0	105.6	230.6	222.8	7.76	29.733			
2,100.0	2,084.3	2,077.0	2,069.8	5.3	4.3	-148.39	50.2	118.8	251.1	242.9	8.25	30.434			
2,200.0	2,182.8	2,174.8	2,166.6	5.6	4.5	-147.63	53.3	132.1	271.7	263.0	8.75	31.049			
2,300.0	2,281.3	2,272.6	2,263.5	5.9	4.8	-146.99	56.5	145.3	292.3	283.1	9.25	31.592			
2,400.0	2,379.7	2,370.4	2,360.3	6.3	5.1	-146.42	59.6	158.5	313.0	303.2	9.76	32.075			
2,500.0	2,478.2	2,468.2	2,457.2	6.6	5.4	-145.93	62.8	171.8	333.7	323.4	10.27	32.507			
2,600.0	2,576.7	2,568.0	2,556.0	7.0	5.6	-145.54	65.9	184.9	354.2	343.4	10.77	32.898			
2,700.0	2,675.2	2,668.9	2,656.3	7.3	5.9	-145.43	68.7	196.6	374.0	362.7	11.25	33.241			
2,800.0	2,773.7	2,770.2	2,757.0	7.7	6.1	-145.56	71.1	206.5	393.0	381.3	11.71	33.549			
2,900.0	2,872.1	2,871.8	2,858.2	8.0	6.4	-145.91	73.0	214.8	411.2	399.0	12.15	33.831			
3,000.0	2,970.6	2,973.5	2,959.8	8.4	6.6	-146.44	74.6	221.3	428.6	416.0	12.57	34.097			
3,100.0	3,069.1	3,075.4	3,061.5	8.7	6.7	-147.15	75.7	226.0	445.3	432.3	12.96	34.354			
3,200.0	3,167.6	3,177.4	3,163.4	9.0	6.9	-148.01	76.4	229.1	461.3	448.0	13.33	34.612			
3,300.0	3,266.1	3,279.3	3,265.4	9.4	7.1	-149.01	76.7	230.3	476.7	463.0	13.67	34.876			
3,400.0	3,364.5	3,378.5	3,364.5	9.7	7.2	-150.05	76.7	230.3	491.7	477.7	13.99	35.140			

CC - Min centre to center distance or convergent point, SF - min separation factor, ES - min ellipse separation

## Anticollision Report

<b>Company:</b>	EnCana Oil & Gas (USA) Inc	<b>Local Co-ordinate Reference:</b>	Well Peppler Farms 1G-4H
<b>Project:</b>	DJ Wattenberg	<b>TVD Reference:</b>	WELL @ 5066.0ft (Ensign)
<b>Reference Site:</b>	S4-T3N-R68W (Peppler Farms)	<b>MD Reference:</b>	WELL @ 5066.0ft (Ensign)
<b>Site Error:</b>	0.0ft	<b>North Reference:</b>	True
<b>Reference Well:</b>	Peppler Farms 1G-4H	<b>Survey Calculation Method:</b>	Minimum Curvature
<b>Well Error:</b>	0.0ft	<b>Output errors are at</b>	2.00 sigma
<b>Reference Wellbore</b>	Hz	<b>Database:</b>	USA EDM 5000 Multi Users DB
<b>Reference Design:</b>	Plan #1	<b>Offset TVD Reference:</b>	Offset Datum

Offset Design													Offset Site Error:	0.0 ft	
Survey Program: 0-MWD													Offset Well Error:		0.0 ft
Reference															
Offset				Semi Major Axis			Distance								
Measured Depth (ft)	Vertical Depth (ft)	Measured Depth (ft)	Vertical Depth (ft)	Reference (ft)	Offset (ft)	Highside Toolface (°)	Offset Wellbore Centre +N/-S (ft)	+E/-W (ft)	Between Centres (ft)	Between Ellipses (ft)	Total Uncertainty Axis	Separation Factor	Warning		
0.0	0.0	0.0	0.0	0.0	0.0	0.00	10.9	0.0	10.9						
100.0	100.0	100.0	100.0	0.2	0.2	0.00	10.9	0.0	10.9	10.6	0.30	35.986			
200.0	200.0	200.0	200.0	0.3	0.3	0.00	10.9	0.0	10.9	10.3	0.65	16.742			
300.0	300.0	300.0	300.0	0.5	0.5	0.00	10.9	0.0	10.9	9.9	1.00	10.909			
400.0	400.0	400.0	400.0	0.7	0.7	0.00	10.9	0.0	10.9	9.6	1.35	8.090 CC, ES			
500.0	500.0	500.0	500.0	0.9	0.8	-161.45	10.9	0.0	11.8	10.1	1.70	6.914			
600.0	600.0	600.0	600.0	1.0	1.0	-164.79	10.9	0.0	14.3	12.2	2.05	6.960			
700.0	699.9	700.1	700.1	1.2	1.2	-167.07	10.2	0.5	17.7	15.3	2.40	7.394			
800.0	799.7	800.4	800.3	1.4	1.4	-167.43	8.1	2.0	21.4	18.6	2.75	7.777			
900.0	899.4	900.7	900.5	1.6	1.6	-166.71	4.5	4.5	25.2	22.1	3.10	8.119			
1,000.0	998.9	1,001.0	1,000.7	1.8	1.8	-165.33	-0.6	8.0	29.1	25.7	3.45	8.429			
1,100.0	1,098.3	1,101.4	1,100.7	2.1	2.0	-163.54	-7.0	12.6	33.3	29.4	3.82	8.713			
1,200.0	1,197.4	1,201.8	1,200.7	2.3	2.2	-161.52	-14.9	18.1	37.6	33.4	4.19	8.974			
1,300.0	1,296.3	1,302.3	1,300.5	2.6	2.4	-159.36	-24.3	24.7	42.2	37.6	4.59	9.207			
1,400.0	1,394.9	1,402.8	1,400.1	2.9	2.7	-157.14	-35.1	32.2	47.1	42.1	5.00	9.411			
1,500.0	1,493.4	1,503.3	1,499.6	3.3	2.9	-154.51	-47.3	40.8	51.5	46.0	5.46	9.419			
1,600.0	1,591.9	1,603.9	1,598.7	3.6	3.2	-151.04	-60.9	50.3	54.6	48.7	5.98	9.141			
1,700.0	1,690.4	1,703.8	1,697.1	3.9	3.6	-147.40	-75.1	60.3	57.4	50.9	6.54	8.786			
1,800.0	1,788.9	1,803.7	1,795.5	4.2	3.9	-144.11	-89.3	70.2	60.5	53.3	7.13	8.478			
1,900.0	1,887.3	1,903.6	1,893.9	4.6	4.2	-141.14	-103.6	80.2	63.6	55.9	7.75	8.211			
2,000.0	1,985.8	2,003.5	1,992.3	4.9	4.5	-138.46	-117.8	90.1	67.0	58.6	8.39	7.982			
2,100.0	2,084.3	2,103.4	2,090.6	5.3	4.9	-136.04	-132.0	100.1	70.5	61.4	9.05	7.786			
2,200.0	2,182.8	2,203.3	2,189.0	5.6	5.2	-133.85	-146.2	110.0	74.1	64.3	9.72	7.618			
2,300.0	2,281.3	2,303.2	2,287.4	5.9	5.5	-131.87	-160.4	120.0	77.8	67.4	10.40	7.474			
2,400.0	2,379.7	2,403.1	2,385.8	6.3	5.9	-130.06	-174.6	129.9	81.5	70.4	11.09	7.350			
2,500.0	2,478.2	2,502.9	2,484.2	6.6	6.2	-128.42	-188.8	139.9	85.4	73.6	11.79	7.243			
2,600.0	2,576.7	2,602.8	2,582.5	7.0	6.5	-126.92	-203.0	149.8	89.3	76.8	12.49	7.152			
2,700.0	2,675.2	2,702.7	2,680.9	7.3	6.9	-125.55	-217.2	159.8	93.3	80.1	13.19	7.072			
2,800.0	2,773.7	2,802.6	2,779.3	7.7	7.2	-124.29	-231.4	169.7	97.3	83.4	13.89	7.003			
2,900.0	2,872.1	2,902.5	2,877.7	8.0	7.6	-123.13	-245.7	179.7	101.4	86.8	14.60	6.943			
3,000.0	2,970.6	3,001.9	2,975.7	8.4	7.9	-122.54	-259.1	189.0	105.7	90.5	15.25	6.933			
3,100.0	3,069.1	3,101.2	3,073.9	8.7	8.2	-122.84	-271.1	197.4	110.6	94.8	15.82	6.993			
3,200.0	3,167.6	3,200.4	3,172.2	9.0	8.5	-123.93	-281.6	204.9	116.1	99.8	16.31	7.119			
3,300.0	3,266.1	3,299.4	3,270.6	9.4	8.7	-125.67	-290.8	211.3	122.2	105.5	16.71	7.314			
3,400.0	3,364.5	3,398.2	3,369.0	9.7	8.9	-127.94	-298.6	216.7	129.1	112.1	17.03	7.583			
3,500.0	3,463.0	3,496.8	3,467.2	10.1	9.1	-130.63	-305.0	221.2	136.9	119.7	17.25	7.935			
3,600.0	3,561.5	3,595.0	3,565.3	10.4	9.3	-133.59	-309.9	224.7	145.8	128.4	17.40	8.380			
3,700.0	3,660.0	3,692.8	3,663.0	10.8	9.5	-136.74	-313.5	227.2	156.0	138.5	17.48	8.924			
3,800.0	3,758.5	3,790.2	3,760.3	11.1	9.6	-139.95	-315.7	228.7	167.5	150.0	17.49	9.574			
3,900.0	3,857.0	3,887.1	3,857.2	11.5	9.7	-143.15	-316.6	229.3	180.5	163.1	17.47	10.332			
4,000.0	3,955.4	3,985.3	3,955.4	11.8	9.9	-146.19	-316.6	229.3	194.8	177.3	17.45	11.158			
4,100.0	4,053.9	4,083.8	4,053.9	12.2	10.0	-148.83	-316.6	229.3	209.5	192.0	17.48	11.986			
4,200.0	4,152.4	4,182.3	4,152.4	12.5	10.1	-151.11	-316.6	229.3	224.6	207.0	17.54	12.804			
4,300.0	4,251.0	4,280.9	4,251.0	12.9	10.2	-153.09	-316.6	229.3	239.3	221.7	17.64	13.567			
4,400.0	4,349.9	4,379.8	4,349.9	13.2	10.4	-154.68	-316.6	229.3	252.8	235.0	17.79	14.212			
4,500.0	4,449.0	4,478.9	4,449.0	13.4	10.5	-155.95	-316.6	229.3	264.8	246.9	17.97	14.739			
4,600.0	4,548.3	4,578.2	4,548.3	13.7	10.6	-156.97	-316.6	229.3	275.4	257.2	18.18	15.149			
4,700.0	4,647.8	4,677.7	4,647.8	13.9	10.7	-157.77	-316.6	229.3	284.4	266.0	18.41	15.448			
4,800.0	4,747.5	4,777.4	4,747.5	14.1	10.9	-158.40	-316.6	229.3	291.8	273.2	18.66	15.640			
4,900.0	4,847.3	4,877.2	4,847.3	14.3	11.0	-158.86	-316.6	229.3	297.7	278.8	18.92	15.731			
5,000.0	4,947.2	4,977.1	4,947.2	14.5	11.1	-159.19	-316.6	229.3	301.9	282.7	19.20	15.725			
5,100.0	5,047.2	5,077.1	5,047.2	14.6	11.3	-159.38	-316.6	229.3	304.5	285.1	19.49	15.628			

CC - Min centre to center distance or convergent point, SF - min separation factor, ES - min ellipse separation

## Anticollision Report

<b>Company:</b>	EnCana Oil & Gas (USA) Inc	<b>Local Co-ordinate Reference:</b>	Well Peppler Farms 1G-4H
<b>Project:</b>	DJ Wattenberg	<b>TVD Reference:</b>	WELL @ 5066.0ft (Ensign)
<b>Reference Site:</b>	S4-T3N-R68W (Peppler Farms)	<b>MD Reference:</b>	WELL @ 5066.0ft (Ensign)
<b>Site Error:</b>	0.0ft	<b>North Reference:</b>	True
<b>Reference Well:</b>	Peppler Farms 1G-4H	<b>Survey Calculation Method:</b>	Minimum Curvature
<b>Well Error:</b>	0.0ft	<b>Output errors are at</b>	2.00 sigma
<b>Reference Wellbore</b>	Hz	<b>Database:</b>	USA EDM 5000 Multi Users DB
<b>Reference Design:</b>	Plan #1	<b>Offset TVD Reference:</b>	Offset Datum

Offset Design													Offset Site Error:	0.0 ft		
Survey Program: 0-MWD													Offset Well Error:		0.0 ft	
Reference													Distance		Warning	
Measured Depth (ft)	Vertical Depth (ft)	Offset		Semi Major Axis		Highside Toolface (°)	Offset Wellbore Centre		Between Centres (ft)	Between Ellipses (ft)	Total Uncertainty Axis	Separation Factor	Warning			
		Measured Depth (ft)	Vertical Depth (ft)	Reference (ft)	Offset (ft)		+N/-S (ft)	+E/-W (ft)								
5,200.0	5,147.2	5,177.1	5,147.2	14.7	11.4	-159.45	-316.6	229.3	305.5	285.7	19.78	15.445				
5,300.0	5,247.2	5,277.1	5,247.2	14.8	11.6	0.54	-316.6	229.3	305.5	280.5	25.04	12.203				
5,400.0	5,347.2	5,377.1	5,347.2	14.9	11.7	0.54	-316.6	229.3	305.5	280.2	25.30	12.076				
5,500.0	5,447.2	5,477.1	5,447.2	15.0	11.8	0.54	-316.6	229.3	305.5	280.0	25.56	11.951				
5,600.0	5,547.2	5,577.1	5,547.2	15.1	12.0	0.54	-316.6	229.3	305.5	279.7	25.83	11.828				
5,700.0	5,647.2	5,677.1	5,647.2	15.2	12.1	0.54	-316.6	229.3	305.5	279.4	26.10	11.707				
5,800.0	5,747.2	5,777.1	5,747.2	15.4	12.3	0.54	-316.6	229.3	305.5	279.2	26.37	11.587				
5,900.0	5,847.2	5,877.1	5,847.2	15.5	12.4	0.54	-316.6	229.3	305.5	278.9	26.64	11.469				
6,000.0	5,947.2	5,977.1	5,947.2	15.6	12.5	0.54	-316.6	229.3	305.5	278.6	26.91	11.352				
6,100.0	6,047.2	6,077.1	6,047.2	15.7	12.7	0.54	-316.6	229.3	305.5	278.3	27.19	11.237				
6,200.0	6,147.2	6,177.1	6,147.2	15.8	12.8	0.54	-316.6	229.3	305.5	278.1	27.47	11.124				
6,300.0	6,247.2	6,277.1	6,247.2	15.9	13.0	0.54	-316.6	229.3	305.5	277.8	27.74	11.012				
6,400.0	6,347.2	6,377.1	6,347.2	16.1	13.1	0.54	-316.6	229.3	305.5	277.5	28.02	10.902				
6,441.3	6,388.5	6,418.3	6,388.5	16.1	13.2	90.65	-316.6	229.3	305.5	281.7	23.81	12.835				
6,500.0	6,447.1	6,477.0	6,447.1	16.2	13.3	90.81	-316.6	229.3	305.6	281.5	24.01	12.728				
6,600.0	6,546.2	6,576.1	6,546.2	16.2	13.4	93.20	-316.6	229.3	306.0	281.5	24.47	12.505				
6,700.0	6,642.5	6,672.3	6,642.5	16.2	13.6	97.77	-316.6	229.3	308.7	283.7	25.04	12.331				
6,800.0	6,734.1	6,770.8	6,740.8	16.2	13.7	103.89	-316.6	226.9	316.3	290.8	25.52	12.395				
6,900.0	6,819.2	6,878.3	6,847.0	16.3	13.8	110.04	-316.6	210.0	328.4	302.8	25.62	12.818				
7,000.0	6,896.2	6,993.7	6,956.6	16.3	13.8	115.67	-316.6	174.5	343.6	318.3	25.29	13.585				
7,100.0	6,963.7	7,117.9	7,066.6	16.5	13.8	120.66	-316.6	117.2	360.6	335.9	24.71	14.593				
7,200.0	7,020.2	7,252.0	7,172.3	16.9	13.9	124.90	-316.6	35.0	377.7	353.5	24.20	15.606				
7,300.0	7,064.7	7,396.1	7,266.7	17.4	14.3	128.28	-316.6	-73.5	393.1	368.9	24.25	16.212				
7,400.0	7,096.3	7,549.4	7,341.1	18.3	15.4	130.72	-316.6	-207.2	405.1	379.7	25.35	15.979				
7,500.0	7,114.5	7,709.6	7,386.8	19.6	17.4	132.09	-316.6	-360.5	412.2	384.4	27.84	14.807				
7,600.0	7,119.0	7,859.0	7,398.0	21.1	20.0	132.40	-316.6	-509.1	413.8	382.5	31.32	13.210				
7,700.0	7,119.0	7,959.0	7,398.0	22.8	21.9	132.39	-316.6	-609.1	413.8	379.7	34.11	12.130				
7,800.0	7,119.0	8,059.0	7,398.0	24.7	23.9	132.39	-316.6	-709.1	413.8	376.8	37.05	11.169				
7,900.0	7,119.0	8,159.0	7,398.0	26.7	26.0	132.39	-316.6	-809.1	413.8	373.7	40.11	10.317				
8,000.0	7,119.0	8,259.0	7,398.0	28.8	28.1	132.39	-316.6	-909.1	413.8	370.6	43.26	9.566				
8,100.0	7,119.0	8,359.0	7,398.0	30.9	30.3	132.39	-316.6	-1,009.1	413.8	367.3	46.49	8.902				
8,200.0	7,119.0	8,459.0	7,398.0	33.1	32.5	132.39	-316.6	-1,109.1	413.8	364.1	49.78	8.314				
8,300.0	7,119.0	8,559.0	7,398.0	35.4	34.8	132.39	-316.6	-1,209.1	413.8	360.7	53.11	7.792				
8,400.0	7,119.0	8,659.0	7,398.0	37.6	37.1	132.39	-316.6	-1,309.1	413.9	357.4	56.49	7.326				
8,500.0	7,119.0	8,759.0	7,398.0	39.9	39.4	132.39	-316.6	-1,409.1	413.9	354.0	59.91	6.909				
8,600.0	7,119.0	8,859.0	7,398.0	42.2	41.8	132.39	-316.6	-1,509.1	413.9	350.5	63.35	6.533				
8,700.0	7,119.0	8,959.0	7,398.0	44.5	44.1	132.39	-316.6	-1,609.1	413.9	347.1	66.81	6.195				
8,800.0	7,119.0	9,059.0	7,398.0	46.9	46.5	132.38	-316.6	-1,709.1	413.9	343.6	70.30	5.888				
8,900.0	7,119.0	9,159.0	7,398.0	49.2	48.8	132.38	-316.6	-1,809.1	413.9	340.1	73.80	5.608				
9,000.0	7,119.0	9,259.0	7,398.0	51.6	51.2	132.38	-316.6	-1,909.1	413.9	336.6	77.32	5.353				
9,100.0	7,119.0	9,359.0	7,398.0	54.0	53.6	132.38	-316.5	-2,009.1	413.9	333.1	80.85	5.120				
9,200.0	7,119.0	9,459.0	7,398.0	56.4	56.0	132.38	-316.5	-2,109.1	413.9	329.5	84.39	4.905				
9,300.0	7,119.0	9,559.0	7,398.0	58.8	58.4	132.38	-316.5	-2,209.1	413.9	326.0	87.95	4.707				
9,400.0	7,119.0	9,659.0	7,398.0	61.1	60.8	132.38	-316.5	-2,309.1	413.9	322.4	91.51	4.523				
9,500.0	7,119.0	9,759.0	7,398.0	63.6	63.3	132.38	-316.5	-2,409.1	413.9	318.9	95.08	4.354				
9,600.0	7,119.0	9,859.0	7,398.0	66.0	65.7	132.38	-316.5	-2,509.1	413.9	315.3	98.66	4.196				
9,700.0	7,119.0	9,959.0	7,398.0	68.4	68.1	132.38	-316.5	-2,609.1	414.0	311.7	102.24	4.049				
9,800.0	7,119.0	10,059.0	7,398.0	70.8	70.5	132.37	-316.5	-2,709.1	414.0	308.1	105.83	3.912				
9,900.0	7,119.0	10,159.0	7,398.0	73.2	73.0	132.37	-316.5	-2,809.1	414.0	304.5	109.42	3.783				
10,000.0	7,119.0	10,259.0	7,398.0	75.6	75.4	132.37	-316.5	-2,909.1	414.0	301.0	113.02	3.663				
10,100.0	7,119.0	10,359.0	7,398.0	78.1	77.8	132.37	-316.5	-3,009.1	414.0	297.4	116.63	3.550				
10,200.0	7,119.0	10,459.0	7,398.0	80.5	80.3	132.37	-316.5	-3,109.1	414.0	293.8	120.24	3.443				

CC - Min centre to center distance or convergent point, SF - min separation factor, ES - min ellipse separation

## Anticollision Report

<b>Company:</b>	EnCana Oil & Gas (USA) Inc	<b>Local Co-ordinate Reference:</b>	Well Pepler Farms 1G-4H
<b>Project:</b>	DJ Wattenberg	<b>TVD Reference:</b>	WELL @ 5066.0ft (Ensign)
<b>Reference Site:</b>	S4-T3N-R68W (Pepler Farms)	<b>MD Reference:</b>	WELL @ 5066.0ft (Ensign)
<b>Site Error:</b>	0.0ft	<b>North Reference:</b>	True
<b>Reference Well:</b>	Pepler Farms 1G-4H	<b>Survey Calculation Method:</b>	Minimum Curvature
<b>Well Error:</b>	0.0ft	<b>Output errors are at</b>	2.00 sigma
<b>Reference Wellbore</b>	Hz	<b>Database:</b>	USA EDM 5000 Multi Users DB
<b>Reference Design:</b>	Plan #1	<b>Offset TVD Reference:</b>	Offset Datum

Offset Design													Offset Site Error:	0.0 ft
S4-T3N-R68W (Pepler Farms) - Pepler Farms 1F-4H - Hz - Plan #1													Offset Well Error:	0.0 ft
Survey Program: 0-MWD														
Reference		Offset		Semi Major Axis			Distance							
Measured Depth (ft)	Vertical Depth (ft)	Measured Depth (ft)	Vertical Depth (ft)	Reference (ft)	Offset (ft)	Highside Toolface (°)	Offset Wellbore Centre +N/-S (ft)	+E/-W (ft)	Between Centres (ft)	Between Ellipses (ft)	Total Uncertainty Axis	Separation Factor	Warning	
10,300.0	7,119.0	10,559.0	7,398.0	82.9	82.7	132.37	-316.5	-3,209.1	414.0	290.1	123.85	3.343		
10,400.0	7,119.0	10,659.0	7,398.0	85.4	85.1	132.37	-316.5	-3,309.1	414.0	286.5	127.46	3.248		
10,500.0	7,119.0	10,759.0	7,398.0	87.8	87.6	132.37	-316.5	-3,409.1	414.0	282.9	131.08	3.158		
10,600.0	7,119.0	10,859.0	7,398.0	90.3	90.0	132.37	-316.5	-3,509.1	414.0	279.3	134.70	3.074		
10,700.0	7,119.0	10,959.0	7,398.0	92.7	92.5	132.37	-316.5	-3,609.1	414.0	275.7	138.32	2.993		
10,800.0	7,119.0	11,059.0	7,398.0	95.1	94.9	132.37	-316.5	-3,709.1	414.0	272.1	141.95	2.917		
10,900.0	7,119.0	11,159.0	7,398.0	97.6	97.4	132.36	-316.5	-3,809.1	414.0	268.5	145.58	2.844		
11,000.0	7,119.0	11,259.0	7,398.0	100.0	99.8	132.36	-316.5	-3,909.1	414.0	264.8	149.21	2.775		
11,100.0	7,119.0	11,359.0	7,398.0	102.5	102.3	132.36	-316.5	-4,009.1	414.1	261.2	152.84	2.709		
11,200.0	7,119.0	11,459.0	7,398.0	104.9	104.7	132.36	-316.5	-4,109.1	414.1	257.6	156.47	2.646		
11,300.0	7,119.0	11,559.0	7,398.0	107.4	107.2	132.36	-316.5	-4,209.1	414.1	254.0	160.11	2.586		
11,400.0	7,119.0	11,659.0	7,398.0	109.8	109.7	132.36	-316.5	-4,309.1	414.1	250.3	163.74	2.529		
11,500.0	7,119.0	11,759.0	7,398.0	112.3	112.1	132.36	-316.5	-4,409.1	414.1	246.7	167.38	2.474		
11,600.0	7,119.0	11,859.0	7,398.0	114.7	114.6	132.36	-316.5	-4,509.1	414.1	243.1	171.02	2.421		
11,645.9	7,119.0	11,904.8	7,398.0	115.9	115.7	132.36	-316.5	-4,555.0	414.1	241.4	172.69	2.398		
11,679.3	7,119.0	11,935.4	7,398.0	116.7	116.4	132.36	-316.5	-4,585.6	414.1	240.3	173.86	2.382 SF		

CC - Min centre to center distance or convergent point, SF - min separation factor, ES - min ellipse separation

### Anticollision Report

<b>Company:</b>	EnCana Oil & Gas (USA) Inc	<b>Local Co-ordinate Reference:</b>	Well Peppler Farms 1G-4H
<b>Project:</b>	DJ Wattenberg	<b>TVD Reference:</b>	WELL @ 5066.0ft (Ensign)
<b>Reference Site:</b>	S4-T3N-R68W (Peppler Farms)	<b>MD Reference:</b>	WELL @ 5066.0ft (Ensign)
<b>Site Error:</b>	0.0ft	<b>North Reference:</b>	True
<b>Reference Well:</b>	Peppler Farms 1G-4H	<b>Survey Calculation Method:</b>	Minimum Curvature
<b>Well Error:</b>	0.0ft	<b>Output errors are at</b>	2.00 sigma
<b>Reference Wellbore</b>	Hz	<b>Database:</b>	USA EDM 5000 Multi Users DB
<b>Reference Design:</b>	Plan #1	<b>Offset TVD Reference:</b>	Offset Datum

Offset Design													Offset Site Error:	0.0 ft
S4-T3N-R68W (Peppler Farms) - Peppler Farms 1H-4H - Hz - Plan #1													Offset Well Error:	0.0 ft
Reference		Offset		Semi Major Axis			Distance				Total Uncertainty Axis	Separation Factor	Warning	
Measured Depth (ft)	Vertical Depth (ft)	Measured Depth (ft)	Vertical Depth (ft)	Reference (ft)	Offset (ft)	Highside Toolface (°)	Offset Wellbore Centre +N/-S (ft)	+E/-W (ft)	Between Centres (ft)	Between Ellipses (ft)				
0.0	0.0	0.0	0.0	0.0	0.0	-180.00	-10.9	0.0	10.9					
100.0	100.0	100.0	100.0	0.2	0.2	-180.00	-10.9	0.0	10.9	10.6	0.30	35.986		
200.0	200.0	200.0	200.0	0.3	0.3	-180.00	-10.9	0.0	10.9	10.3	0.65	16.742	CC, ES	
300.0	300.0	299.8	299.8	0.5	0.5	178.83	-11.8	0.2	11.8	10.8	1.00	11.747		
400.0	400.0	399.6	399.5	0.7	0.7	176.14	-14.3	1.0	14.3	13.0	1.35	10.584		
500.0	500.0	499.2	499.1	0.9	0.9	13.94	-18.4	2.2	17.7	16.0	1.70	10.438		
600.0	600.0	598.8	598.5	1.0	1.1	12.77	-24.3	3.8	21.2	19.1	2.05	10.350		
700.0	699.9	698.4	697.7	1.2	1.3	12.20	-31.7	6.0	24.7	22.3	2.40	10.295		
800.0	799.7	797.9	796.8	1.4	1.5	12.01	-40.9	8.6	28.2	25.4	2.75	10.258		
900.0	899.4	897.3	895.6	1.6	1.8	12.07	-51.6	11.8	31.7	28.6	3.10	10.229		
1,000.0	998.9	996.6	994.1	1.8	2.0	12.31	-64.1	15.3	35.2	31.7	3.45	10.205		
1,100.0	1,098.3	1,095.9	1,092.3	2.1	2.3	12.68	-78.1	19.4	38.7	34.9	3.80	10.183		
1,200.0	1,197.4	1,195.2	1,190.2	2.3	2.6	13.14	-93.8	23.9	42.3	38.1	4.16	10.158		
1,300.0	1,296.3	1,294.4	1,287.7	2.6	3.0	13.68	-111.0	28.9	45.8	41.3	4.52	10.131		
1,400.0	1,394.9	1,394.3	1,385.8	2.9	3.3	14.44	-129.4	34.2	48.6	43.7	4.89	9.937		
1,500.0	1,493.4	1,494.3	1,484.0	3.3	3.7	15.38	-147.7	39.5	50.6	45.3	5.28	9.588		
1,600.0	1,591.9	1,594.2	1,582.1	3.6	4.1	16.25	-166.0	44.8	52.6	46.9	5.67	9.278		
1,700.0	1,690.4	1,694.2	1,680.2	3.9	4.4	17.06	-184.3	50.1	54.6	48.5	6.07	9.000		
1,800.0	1,788.9	1,794.2	1,778.4	4.2	4.8	17.81	-202.7	55.3	56.6	50.1	6.47	8.750		
1,900.0	1,887.3	1,894.2	1,876.5	4.6	5.2	18.51	-221.0	60.6	58.6	51.8	6.88	8.523		
2,000.0	1,985.8	1,994.2	1,974.7	4.9	5.5	19.16	-239.3	65.9	60.7	53.4	7.29	8.316		
2,100.0	2,084.3	2,094.1	2,072.8	5.3	5.9	19.77	-257.7	71.2	62.7	55.0	7.71	8.127		
2,200.0	2,182.8	2,194.1	2,170.9	5.6	6.3	20.34	-276.0	76.5	64.7	56.6	8.14	7.954		
2,300.0	2,281.3	2,294.1	2,269.1	5.9	6.6	20.88	-294.3	81.8	66.8	58.2	8.57	7.794		
2,400.0	2,379.7	2,394.1	2,367.2	6.3	7.0	21.38	-312.6	87.1	68.8	59.8	9.00	7.646		
2,500.0	2,478.2	2,494.0	2,465.4	6.6	7.4	21.86	-331.0	92.4	70.9	61.5	9.44	7.510		
2,600.0	2,576.7	2,594.0	2,563.5	7.0	7.8	22.31	-349.3	97.7	73.0	63.1	9.88	7.383		
2,700.0	2,675.2	2,694.0	2,661.6	7.3	8.1	22.73	-367.6	103.0	75.0	64.7	10.33	7.265		
2,800.0	2,773.7	2,794.0	2,759.8	7.7	8.5	23.13	-386.0	108.2	77.1	66.3	10.78	7.155		
2,900.0	2,872.1	2,893.9	2,857.9	8.0	8.9	23.51	-404.3	113.5	79.2	68.0	11.23	7.052		
3,000.0	2,970.6	2,993.9	2,956.1	8.4	9.3	23.87	-422.6	118.8	81.3	69.6	11.68	6.955		
3,100.0	3,069.1	3,093.9	3,054.2	8.7	9.6	24.21	-440.9	124.1	83.4	71.2	12.14	6.865		
3,200.0	3,167.6	3,193.9	3,152.3	9.0	10.0	24.54	-459.3	129.4	85.4	72.8	12.60	6.780		
3,300.0	3,266.1	3,293.9	3,250.5	9.4	10.4	24.85	-477.6	134.7	87.5	74.5	13.06	6.700		
3,400.0	3,364.5	3,393.8	3,348.6	9.7	10.8	25.15	-495.9	140.0	89.6	76.1	13.53	6.625		
3,500.0	3,463.0	3,493.8	3,446.8	10.1	11.1	25.43	-514.2	145.3	91.7	77.7	13.99	6.554		
3,600.0	3,561.5	3,593.8	3,544.9	10.4	11.5	25.70	-532.6	150.6	93.8	79.3	14.46	6.486		
3,700.0	3,660.0	3,693.8	3,643.0	10.8	11.9	25.95	-550.9	155.9	95.9	81.0	14.93	6.423		
3,800.0	3,758.5	3,793.7	3,741.2	11.1	12.3	26.20	-569.2	161.1	98.0	82.6	15.40	6.362		
3,900.0	3,857.0	3,893.7	3,839.3	11.5	12.6	26.44	-587.6	166.4	100.1	84.2	15.88	6.305		
4,000.0	3,955.4	3,993.7	3,937.5	11.8	13.0	26.66	-605.9	171.7	102.2	85.9	16.35	6.251		
4,100.0	4,053.9	4,093.7	4,035.6	12.2	13.4	26.88	-624.2	177.0	104.3	87.5	16.83	6.199		
4,200.0	4,152.4	4,193.6	4,133.7	12.5	13.8	27.09	-642.5	182.3	106.4	89.1	17.30	6.150		
4,300.0	4,251.0	4,293.6	4,231.9	12.9	14.1	27.13	-660.9	187.6	109.1	91.4	17.75	6.150		
4,400.0	4,349.9	4,393.5	4,329.9	13.2	14.5	26.78	-679.2	192.9	113.4	95.3	18.10	6.266		
4,500.0	4,449.0	4,493.3	4,427.9	13.4	14.9	26.09	-697.5	198.2	119.3	100.9	18.38	6.489		
4,600.0	4,548.3	4,595.0	4,527.8	13.7	15.2	25.24	-715.4	203.3	126.0	107.4	18.61	6.770		
4,700.0	4,647.8	4,696.9	4,628.3	13.9	15.6	24.43	-731.6	208.0	132.7	113.8	18.83	7.045		
4,800.0	4,747.5	4,798.9	4,729.2	14.1	15.9	23.66	-746.1	212.2	139.3	120.3	19.05	7.313		
4,900.0	4,847.3	4,901.1	4,830.5	14.3	16.1	22.92	-758.9	215.9	145.9	126.6	19.26	7.575		
5,000.0	4,947.2	5,003.4	4,932.2	14.5	16.4	22.21	-770.0	219.1	152.4	132.9	19.46	7.832		
5,100.0	5,047.2	5,105.8	5,034.1	14.6	16.6	21.51	-779.4	221.8	158.9	139.2	19.66	8.082		

CC - Min centre to center distance or convergent point, SF - min separation factor, ES - min ellipse separation

### Anticollision Report

<b>Company:</b>	EnCana Oil & Gas (USA) Inc	<b>Local Co-ordinate Reference:</b>	Well Peppler Farms 1G-4H
<b>Project:</b>	DJ Wattenberg	<b>TVD Reference:</b>	WELL @ 5066.0ft (Ensign)
<b>Reference Site:</b>	S4-T3N-R68W (Peppler Farms)	<b>MD Reference:</b>	WELL @ 5066.0ft (Ensign)
<b>Site Error:</b>	0.0ft	<b>North Reference:</b>	True
<b>Reference Well:</b>	Peppler Farms 1G-4H	<b>Survey Calculation Method:</b>	Minimum Curvature
<b>Well Error:</b>	0.0ft	<b>Output errors are at</b>	2.00 sigma
<b>Reference Wellbore</b>	Hz	<b>Database:</b>	USA EDM 5000 Multi Users DB
<b>Reference Design:</b>	Plan #1	<b>Offset TVD Reference:</b>	Offset Datum

Offset Design													Offset Site Error:	0.0 ft	
Survey Program: 0-MWD													Offset Well Error:		0.0 ft
Reference															
Offset				Semi Major Axis			Distance								
Measured Depth (ft)	Vertical Depth (ft)	Measured Depth (ft)	Vertical Depth (ft)	Reference (ft)	Offset (ft)	Highside Toolface (°)	Offset Wellbore Centre +N/-S (ft)	+E/-W (ft)	Between Centres (ft)	Between Ellipses (ft)	Total Uncertainty Axis	Separation Factor	Warning		
5,200.0	5,147.2	5,208.3	5,136.4	14.7	16.8	20.84	-787.0	224.0	165.3	145.4	19.85	8.326			
5,300.0	5,247.2	5,311.1	5,238.9	14.8	17.0	-179.75	-792.9	225.7	170.9	140.2	30.76	5.557			
5,400.0	5,347.2	5,414.0	5,341.7	14.9	17.1	179.86	-796.9	226.9	174.9	143.9	31.07	5.631			
5,500.0	5,447.2	5,517.0	5,444.7	15.0	17.3	179.64	-799.3	227.5	177.2	145.9	31.33	5.656			
5,600.0	5,547.2	5,619.5	5,547.2	15.1	17.4	179.59	-799.8	227.7	177.7	146.2	31.55	5.634			
5,700.0	5,647.2	5,719.5	5,647.2	15.2	17.5	179.59	-799.8	227.7	177.7	146.0	31.77	5.595			
5,800.0	5,747.2	5,819.5	5,747.2	15.4	17.6	179.59	-799.8	227.7	177.7	145.7	31.99	5.556			
5,900.0	5,847.2	5,919.5	5,847.2	15.5	17.7	179.59	-799.8	227.7	177.7	145.5	32.21	5.518			
6,000.0	5,947.2	6,019.5	5,947.2	15.6	17.8	179.59	-799.8	227.7	177.7	145.3	32.44	5.479			
6,100.0	6,047.2	6,119.5	6,047.2	15.7	17.9	179.59	-799.8	227.7	177.7	145.1	32.66	5.441			
6,200.0	6,147.2	6,219.5	6,147.2	15.8	18.0	179.59	-799.8	227.7	177.7	144.8	32.89	5.403			
6,300.0	6,247.2	6,319.5	6,247.2	15.9	18.1	179.59	-799.8	227.7	177.7	144.6	33.13	5.366			
6,400.0	6,347.2	6,419.5	6,347.2	16.1	18.2	179.59	-799.8	227.7	177.7	144.4	33.36	5.328			
6,444.8	6,392.0	6,464.3	6,392.0	16.1	18.2	-90.61	-799.8	227.7	177.7	154.0	23.70	7.501			
6,500.0	6,447.1	6,519.4	6,447.1	16.2	18.3	-90.85	-799.8	227.7	177.8	153.9	23.84	7.458			
6,600.0	6,546.2	6,618.5	6,546.2	16.2	18.4	-94.97	-799.8	227.7	178.4	154.9	23.58	7.568			
6,700.0	6,642.5	6,714.7	6,642.5	16.2	18.5	-102.71	-799.8	227.7	182.8	159.5	23.21	7.874			
6,800.0	6,734.1	6,813.0	6,740.7	16.2	18.6	-112.61	-799.8	225.3	195.0	171.8	23.27	8.381			
6,900.0	6,819.2	6,920.3	6,846.5	16.3	18.7	-121.73	-799.8	208.5	213.7	190.0	23.70	9.020			
7,000.0	6,896.2	7,035.3	6,955.8	16.3	18.7	-129.27	-799.8	173.2	236.3	212.3	24.02	9.838			
7,100.0	6,963.7	7,159.2	7,065.6	16.5	18.7	-135.31	-799.8	116.2	260.3	236.3	24.02	10.839			
7,200.0	7,020.2	7,292.8	7,171.1	16.9	18.7	-140.00	-799.8	34.5	283.5	259.8	23.74	11.943			
7,300.0	7,064.7	7,436.5	7,265.5	17.4	19.0	-143.49	-799.8	-73.5	303.8	280.4	23.36	13.003			
7,400.0	7,096.3	7,589.4	7,340.2	18.3	19.6	-145.87	-799.8	-206.7	319.3	296.1	23.20	13.762			
7,500.0	7,114.5	7,749.4	7,386.3	19.6	20.9	-147.20	-799.8	-359.6	328.5	305.0	23.53	13.964			
7,600.0	7,119.0	7,899.7	7,398.0	21.1	22.7	-147.51	-799.8	-509.1	330.8	306.1	24.67	13.407			
7,700.0	7,119.0	7,999.7	7,398.0	22.8	24.3	-147.51	-799.8	-609.1	330.8	304.0	26.72	12.377			
7,800.0	7,119.0	8,099.7	7,398.0	24.7	26.0	-147.51	-799.8	-709.1	330.8	301.9	28.88	11.453			
7,900.0	7,119.0	8,199.7	7,398.0	26.7	27.9	-147.51	-799.8	-809.1	330.8	299.6	31.12	10.629			
8,000.0	7,119.0	8,299.7	7,398.0	28.8	29.8	-147.51	-799.8	-909.1	330.8	297.3	33.42	9.897			
8,100.0	7,119.0	8,399.7	7,398.0	30.9	31.9	-147.52	-799.8	-1,009.1	330.7	295.0	35.77	9.245			
8,164.6	7,119.0	8,464.3	7,398.0	32.3	33.3	-147.52	-799.8	-1,073.7	330.7	293.4	37.32	8.862			
8,200.0	7,119.0	8,499.1	7,398.0	33.1	34.0	-147.51	-799.9	-1,108.5	330.8	292.6	38.17	8.666			
8,300.0	7,119.0	8,596.1	7,398.0	35.4	36.1	-147.34	-801.0	-1,205.5	331.4	290.7	40.70	8.142			
8,400.0	7,119.0	8,693.1	7,398.0	37.6	38.3	-146.94	-803.8	-1,302.4	333.0	289.5	43.50	7.654			
8,500.0	7,119.0	8,793.0	7,398.0	39.9	40.5	-146.41	-807.5	-1,402.3	335.0	288.5	46.53	7.199			
8,600.0	7,119.0	8,893.0	7,398.0	42.2	42.8	-145.89	-811.2	-1,502.2	337.0	287.4	49.65	6.788			
8,700.0	7,119.0	8,992.9	7,398.0	44.5	45.1	-145.38	-814.9	-1,602.0	339.1	286.3	52.85	6.416			
8,800.0	7,119.0	9,092.8	7,398.0	46.9	47.4	-144.87	-818.6	-1,701.9	341.2	285.1	56.13	6.079			
8,900.0	7,119.0	9,192.8	7,398.0	49.2	49.8	-144.37	-822.2	-1,801.8	343.3	283.9	59.48	5.773			
9,000.0	7,119.0	9,292.7	7,398.0	51.6	52.1	-143.88	-825.9	-1,901.6	345.5	282.6	62.89	5.493			
9,100.0	7,119.0	9,392.6	7,398.0	54.0	54.5	-143.39	-829.6	-2,001.5	347.7	281.3	66.38	5.237			
9,200.0	7,119.0	9,492.6	7,398.0	56.4	56.9	-142.91	-833.3	-2,101.4	349.9	279.9	69.93	5.003			
9,300.0	7,119.0	9,592.5	7,398.0	58.8	59.2	-142.43	-836.9	-2,201.2	352.1	278.6	73.54	4.788			
9,400.0	7,119.0	9,692.4	7,398.0	61.1	61.6	-141.96	-840.6	-2,301.1	354.3	277.1	77.21	4.589			
9,500.0	7,119.0	9,792.3	7,398.0	63.6	64.0	-141.49	-844.3	-2,401.0	356.6	275.7	80.94	4.406			
9,600.0	7,119.0	9,892.3	7,398.0	66.0	66.4	-141.04	-848.0	-2,500.8	358.9	274.2	84.72	4.237			
9,700.0	7,119.0	9,992.2	7,398.0	68.4	68.8	-140.58	-851.7	-2,600.7	361.2	272.7	88.55	4.080			
9,800.0	7,119.0	10,092.1	7,398.0	70.8	71.2	-140.14	-855.3	-2,700.6	363.6	271.2	92.43	3.934			
9,900.0	7,119.0	10,192.1	7,398.0	73.2	73.6	-139.69	-859.0	-2,800.4	366.0	269.6	96.35	3.798			
10,000.0	7,119.0	10,292.0	7,398.0	75.6	76.1	-139.26	-862.7	-2,900.3	368.3	268.0	100.33	3.671			
10,100.0	7,119.0	10,391.9	7,398.0	78.1	78.5	-138.83	-866.4	-3,000.1	370.7	266.4	104.34	3.553			

CC - Min centre to center distance or convergent point, SF - min separation factor, ES - min ellipse separation

## Anticollision Report

<b>Company:</b>	EnCana Oil & Gas (USA) Inc	<b>Local Co-ordinate Reference:</b>	Well Pepler Farms 1G-4H
<b>Project:</b>	DJ Wattenberg	<b>TVD Reference:</b>	WELL @ 5066.0ft (Ensign)
<b>Reference Site:</b>	S4-T3N-R68W (Pepler Farms)	<b>MD Reference:</b>	WELL @ 5066.0ft (Ensign)
<b>Site Error:</b>	0.0ft	<b>North Reference:</b>	True
<b>Reference Well:</b>	Pepler Farms 1G-4H	<b>Survey Calculation Method:</b>	Minimum Curvature
<b>Well Error:</b>	0.0ft	<b>Output errors are at</b>	2.00 sigma
<b>Reference Wellbore</b>	Hz	<b>Database:</b>	USA EDM 5000 Multi Users DB
<b>Reference Design:</b>	Plan #1	<b>Offset TVD Reference:</b>	Offset Datum

Offset Design													Offset Site Error:	0.0 ft
S4-T3N-R68W (Pepler Farms) - Pepler Farms 1H-4H - Hz - Plan #1													Offset Well Error:	0.0 ft
Survey Program: 0-MWD														
Reference		Offset		Semi Major Axis			Distance						Warning	
Measured Depth (ft)	Vertical Depth (ft)	Measured Depth (ft)	Vertical Depth (ft)	Reference (ft)	Offset (ft)	Highside Toolface (°)	Offset Wellbore Centre +N/-S (ft)	+E/-W (ft)	Between Centres (ft)	Between Ellipses (ft)	Total Uncertainty Axis	Separation Factor		
10,200.0	7,119.0	10,491.9	7,398.0	80.5	80.9	-138.41	-870.0	-3,100.0	373.2	264.8	108.40	3.442		
10,300.0	7,119.0	10,591.8	7,398.0	82.9	83.3	-137.99	-873.7	-3,199.9	375.6	263.1	112.50	3.339		
10,400.0	7,119.0	10,691.7	7,398.0	85.4	85.8	-137.57	-877.4	-3,299.7	378.1	261.4	116.64	3.241		
10,500.0	7,119.0	10,791.7	7,398.0	87.8	88.2	-137.17	-881.1	-3,399.6	380.6	259.8	120.82	3.150		
10,600.0	7,119.0	10,891.6	7,398.0	90.3	90.6	-136.76	-884.8	-3,499.5	383.1	258.1	125.04	3.064		
10,700.0	7,119.0	10,991.5	7,398.0	92.7	93.1	-136.37	-888.4	-3,599.3	385.6	256.3	129.28	2.983		
10,800.0	7,119.0	11,091.5	7,398.0	95.1	95.5	-135.97	-892.1	-3,699.2	388.2	254.6	133.57	2.906		
10,900.0	7,119.0	11,191.4	7,398.0	97.6	97.9	-135.59	-895.8	-3,799.1	390.7	252.8	137.88	2.834		
11,000.0	7,119.0	11,291.3	7,398.0	100.0	100.4	-135.20	-899.5	-3,898.9	393.3	251.1	142.23	2.765		
11,100.0	7,119.0	11,391.3	7,398.0	102.5	102.8	-134.83	-903.1	-3,998.8	395.9	249.3	146.61	2.700		
11,200.0	7,119.0	11,491.2	7,398.0	104.9	105.3	-134.45	-906.8	-4,098.7	398.5	247.5	151.01	2.639		
11,300.0	7,119.0	11,591.1	7,398.0	107.4	107.7	-134.09	-910.5	-4,198.5	401.1	245.7	155.44	2.581		
11,400.0	7,119.0	11,691.1	7,398.0	109.8	110.2	-133.73	-914.2	-4,298.4	403.8	243.9	159.90	2.525		
11,500.0	7,119.0	11,791.0	7,398.0	112.3	112.6	-133.37	-917.9	-4,398.3	406.4	242.1	164.39	2.472		
11,600.0	7,119.0	11,890.9	7,398.0	114.7	115.0	-133.01	-921.5	-4,498.1	409.1	240.2	168.90	2.422		
11,679.3	7,119.0	11,970.2	7,398.0	116.7	117.0	-132.74	-924.4	-4,577.3	411.3	238.8	172.50	2.384 SF		

CC - Min centre to center distance or convergent point, SF - min separation factor, ES - min ellipse separation

## Anticollision Report

<b>Company:</b>	EnCana Oil & Gas (USA) Inc	<b>Local Co-ordinate Reference:</b>	Well Pepler Farms 1G-4H
<b>Project:</b>	DJ Wattenberg	<b>TVD Reference:</b>	WELL @ 5066.0ft (Ensign)
<b>Reference Site:</b>	S4-T3N-R68W (Pepler Farms)	<b>MD Reference:</b>	WELL @ 5066.0ft (Ensign)
<b>Site Error:</b>	0.0ft	<b>North Reference:</b>	True
<b>Reference Well:</b>	Pepler Farms 1G-4H	<b>Survey Calculation Method:</b>	Minimum Curvature
<b>Well Error:</b>	0.0ft	<b>Output errors are at</b>	2.00 sigma
<b>Reference Wellbore</b>	Hz	<b>Database:</b>	USA EDM 5000 Multi Users DB
<b>Reference Design:</b>	Plan #1	<b>Offset TVD Reference:</b>	Offset Datum

Offset Design													Offset Site Error:	0.0 ft	
Survey Program: 77-MWD													Offset Well Error:		0.0 ft
S4-T3N-R68W (Pepler Farms) - PEPLER FARMS 6-4-4 (EXISTING) - Existing - Existing															
Reference		Offset		Semi Major Axis			Distance						Warning		
Measured Depth (ft)	Vertical Depth (ft)	Measured Depth (ft)	Vertical Depth (ft)	Reference (ft)	Offset (ft)	Highside Toolface (°)	Offset Wellbore Centre +N/-S (ft)	+E/-W (ft)	Between Centres (ft)	Between Ellipses (ft)	Total Uncertainty Axis	Separation Factor			
7,800.0	7,119.0	7,724.8	7,141.2	24.7	46.8	-91.05	-962.4	-1,059.6	488.5	443.8	44.69	10.930			
7,900.0	7,119.0	7,724.7	7,141.2	26.7	46.8	-91.04	-962.4	-1,059.6	422.5	375.7	46.83	9.022			
8,000.0	7,119.0	7,724.7	7,141.2	28.8	46.8	-91.04	-962.4	-1,059.6	372.0	323.0	49.03	7.589			
8,100.0	7,119.0	7,724.7	7,141.1	30.9	46.8	-91.03	-962.4	-1,059.6	344.0	292.7	51.26	6.710			
8,150.5	7,119.0	7,724.6	7,141.1	32.0	46.8	-91.03	-962.4	-1,059.6	340.3	287.8	52.41	6.492 CC, ES			
8,200.0	7,119.0	7,724.6	7,141.1	33.1	46.8	-91.03	-962.4	-1,059.6	343.8	290.3	53.54	6.422 SF			
8,300.0	7,119.0	7,724.6	7,141.1	35.4	46.8	-91.02	-962.4	-1,059.6	371.7	315.8	55.84	6.656			
8,400.0	7,119.0	7,724.6	7,141.0	37.6	46.8	-91.01	-962.4	-1,059.6	421.9	363.8	58.16	7.255			
8,500.0	7,119.0	7,724.5	7,141.0	39.9	46.8	-91.01	-962.4	-1,059.6	487.8	427.3	60.50	8.062			

CC - Min centre to center distance or convergent point, SF - min separation factor, ES - min ellipse separation

## Anticollision Report

<b>Company:</b> EnCana Oil & Gas (USA) Inc	<b>Local Co-ordinate Reference:</b> Well Pepler Farms 1G-4H	
<b>Project:</b> DJ Wattenberg	<b>TVD Reference:</b> WELL @ 5066.0ft (Ensign)	
<b>Reference Site:</b> S4-T3N-R68W (Pepler Farms)	<b>MD Reference:</b> WELL @ 5066.0ft (Ensign)	
<b>Site Error:</b> 0.0ft	<b>North Reference:</b> True	
<b>Reference Well:</b> Pepler Farms 1G-4H	<b>Survey Calculation Method:</b> Minimum Curvature	
<b>Well Error:</b> 0.0ft	<b>Output errors are at</b> 2.00 sigma	
<b>Reference Wellbore</b> Hz	<b>Database:</b> USA EDM 5000 Multi Users DB	
<b>Reference Design:</b> Plan #1	<b>Offset TVD Reference:</b> Offset Datum	

Reference Depths are relative to WELL @ 5066.0ft (Ensign)  
 Offset Depths are relative to Offset Datum  
 Central Meridian is -105.500000 °

Coordinates are relative to: Pepler Farms 1G-4H  
 Coordinate System is US State Plane 1983, Colorado Northern Zone  
 Grid Convergence at Surface is: 0.32°

