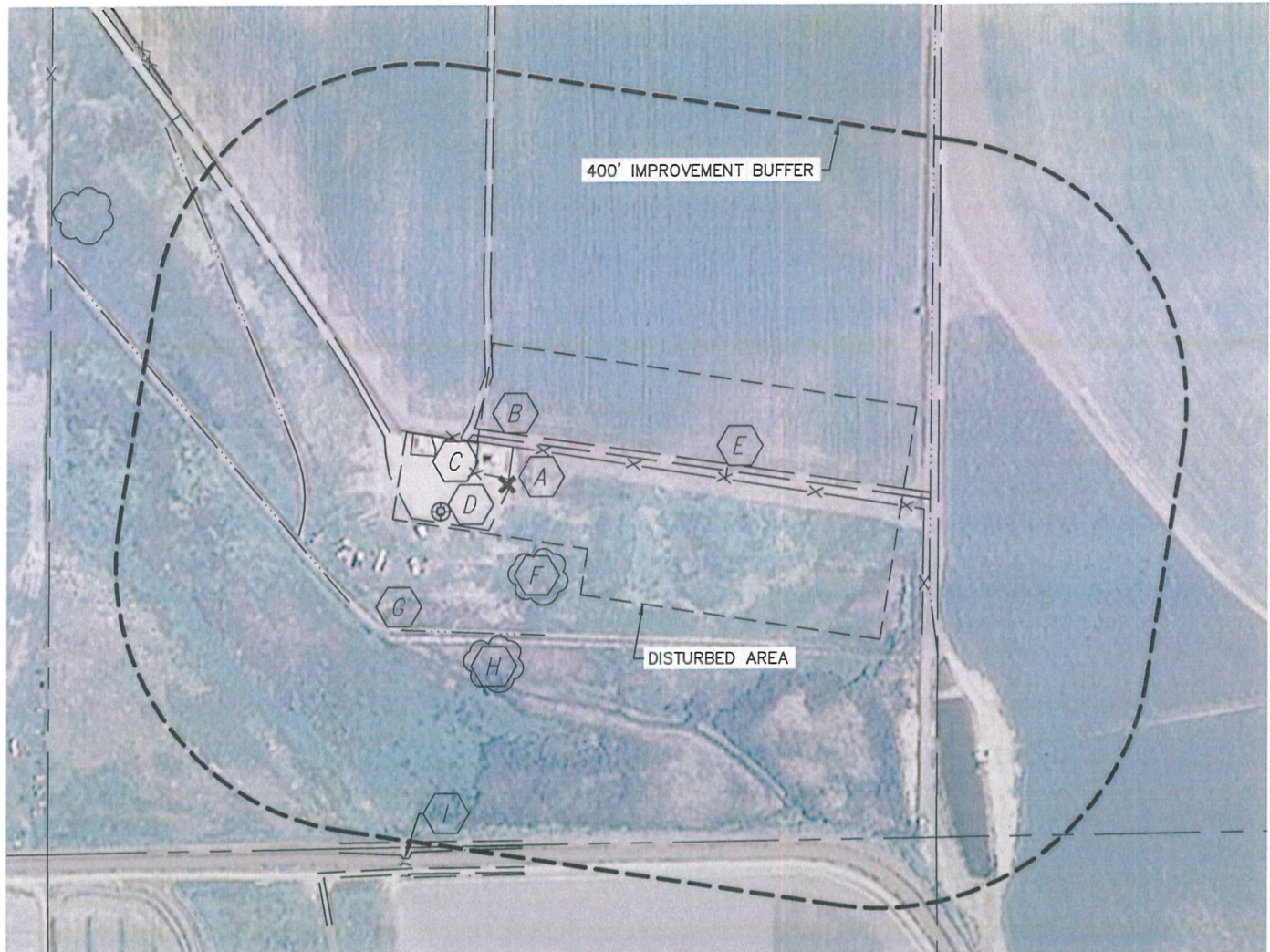


Lat40°, Inc. 1635 Foxtrail Drive, Suite 325 Loveland, CO 970-776-3321

PRODUCTION FACILITY LOCATION DRAWING

WOLFPACK B02-62-1HN PAD &
WOLFPACK B02-66-1HN PAD

SECTION: 2
TOWNSHIP: 5N
RANGE: 64W



REFERENCE POINT LOCATION:

LAT: 40.42256°N
LONG: 104.52457°W
ELEV: 4611'
PDOP: 1.3
DATE: 2/29/2012
OPERATOR: ADAM KELLY
1/41/4: SW1/4SW1/4
FSL: 537'
FWL: 679'
DISTANCE TO WELL: 991'
ASSOCIATED NEW WELLS:
WOLFPACK B02-62-1HN
WOLFPACK B02-63-1HN
WOLFPACK PC B03-63-1HN
WOLFPACK B02-64-1HN
WOLFPACK B02-65HN
WOLFPACK B02-65-1HN
LONEWOLF B02-65HC
WOLFPACK B02-66-1HN
ASSOCIATED EXISTING WELLS:
BUCKLEN 1-2
BUCKLEN B2-12

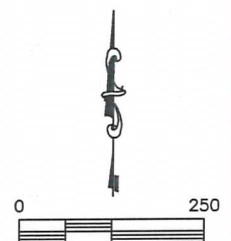
IMPROVEMENTS:

- A FENCE 57' N & 624' E
- B FIELD ROAD 66' N, 98' NW, 197' NW, 530' S, 569' S & 648' SW
- C EX. PRODUCTION EQUIPMENT (NOBLE) 117' NW & 9' N
- D EX. O&G WELL 107' SW
- E CULVERT 325' E
- F LOW AREA 115' SE
- G DITCH 222' S, 291' SW, 301' SW, 531' S, 580' S & 619' E
- H WET AREA 239' S
- I CONCRETE STRUCTURE 570' S

NEAREST: BUILDING 1826' S,
PUBLIC ROAD 2112' N (CR 60.5), ABOVE GROUND UTILITY 2076' N,
RAILROAD 5280'+ S, PROPERTY LINE 537' S

LEGEND

X - REFERENCE POINT
ALL DISTANCES ARE APPROXIMATE.



DATE: 12/4/2012
PROJECT#: 2012029