

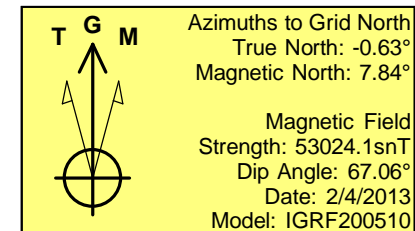
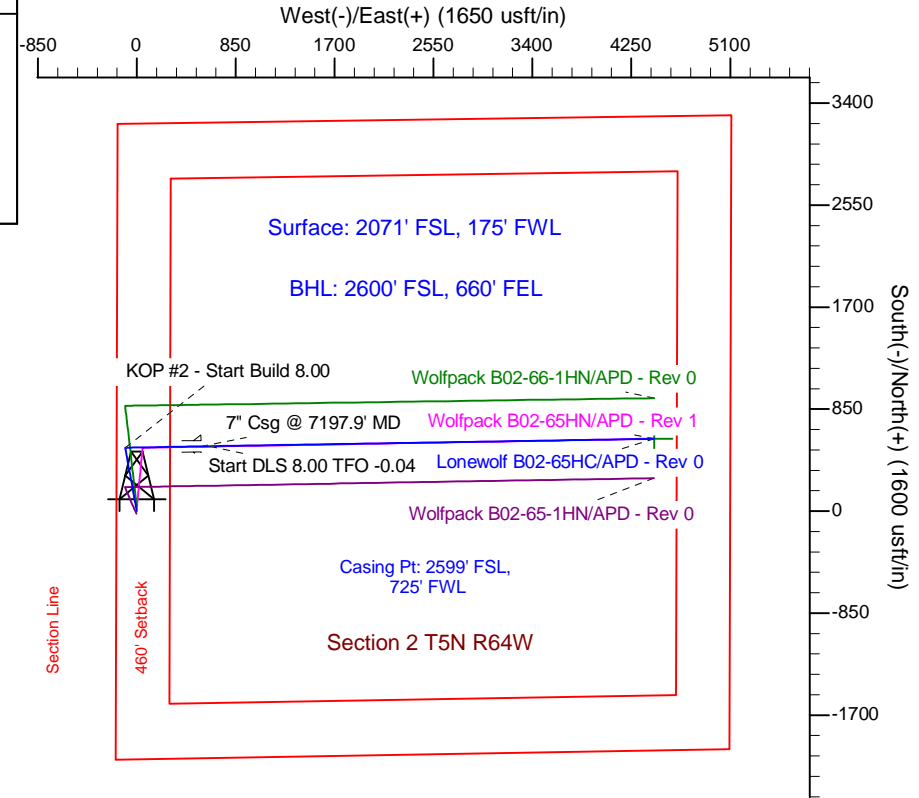
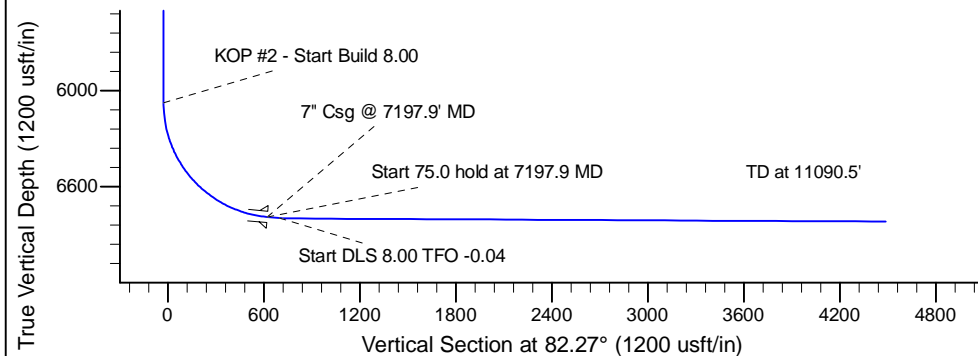
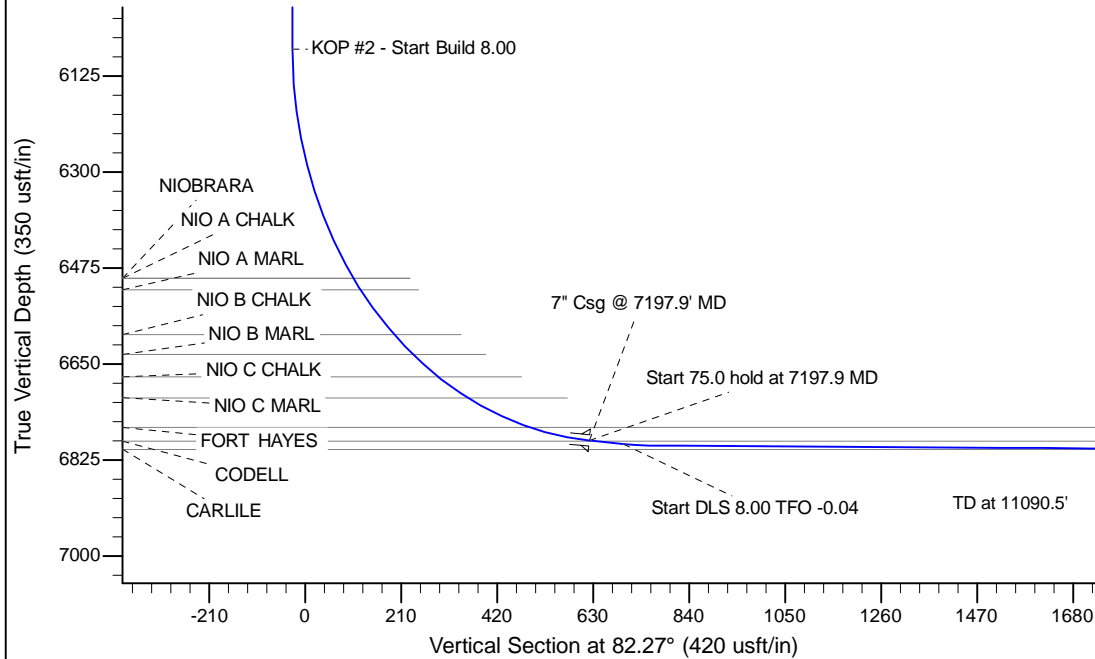
Project: Wattenberg Field
Site: B (Sec.2-T05N-R64W) Weld County, CO
Well: Lonewolf B02-65HC
Wellbore: Original Drilling
Design: APD - Rev 0

Northern Region Drilling

Geodetic System: US State Plane 1983
Datum: North American Datum 1983
Ellipsoid: GRS 1980
Zone: Colorado Northern Zone
System Datum: Mean Sea Level

SECTION DETAILS

Sec	MD	Inc	Azi	TVD	+N/-S	+E/-W	Dleg	TFace	VFace	Target
1	0.0	0.00	0.00	0.0	0.0	0.0	0.00	0.00	0.0	
2	1800.0	0.00	0.00	1800.0	0.0	0.0	0.00	0.00	0.0	
3	2501.3	14.03	349.30	2494.3	83.9	-15.9	2.00	349.30	-4.4	
4	4017.9	14.03	349.30	3965.7	445.1	-84.1	0.00	0.00	-23.5	
5	4719.2	0.00	0.00	4660.0	529.0	-100.0	2.00	180.00	-28.0	
6	6135.4	0.00	0.00	6076.2	529.0	-100.0	0.00	0.00	-28.0	
7	7197.9	85.00	89.07	6789.7	539.6	553.7	8.00	89.07	621.2	
8	7272.9	85.00	89.07	6796.2	540.8	628.4	0.00	0.00	695.4	
9	7331.7	89.70	89.07	6798.9	541.8	687.1	8.00	-0.04	753.7	
10	11090.5	89.70	89.07	6818.5	603.0	4445.3	0.00	0.00	4486.1	Lonewolf B02-65HC BHL 2600'FSL, 660'FEL



WELL DETAILS: Lonewolf B02-65HC			
Ground Level:	4625.0	Latitude	40.426760
Northing	1399797.28	Easting	3271073.04
Longitude	-104.526300		
Plan: APD - Rev 0 (Lonewolf B02-65HC/Original Drilling)			
Created By:	Carrie Wilers	Date:	18:29, February 07 2013
Checked:		Date:	
Reviewed:		Date:	
Approved:		Date:	