

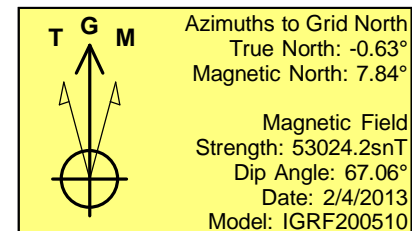
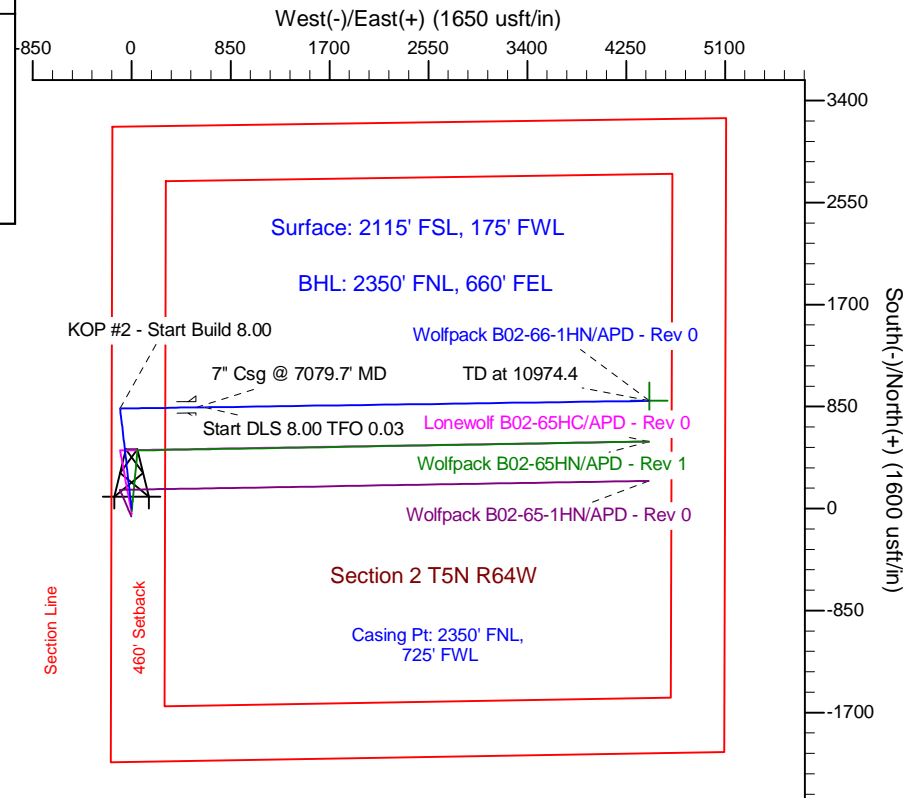
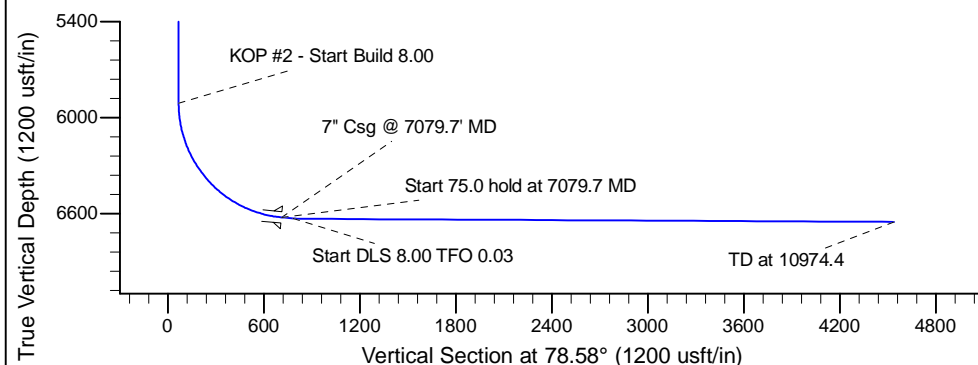
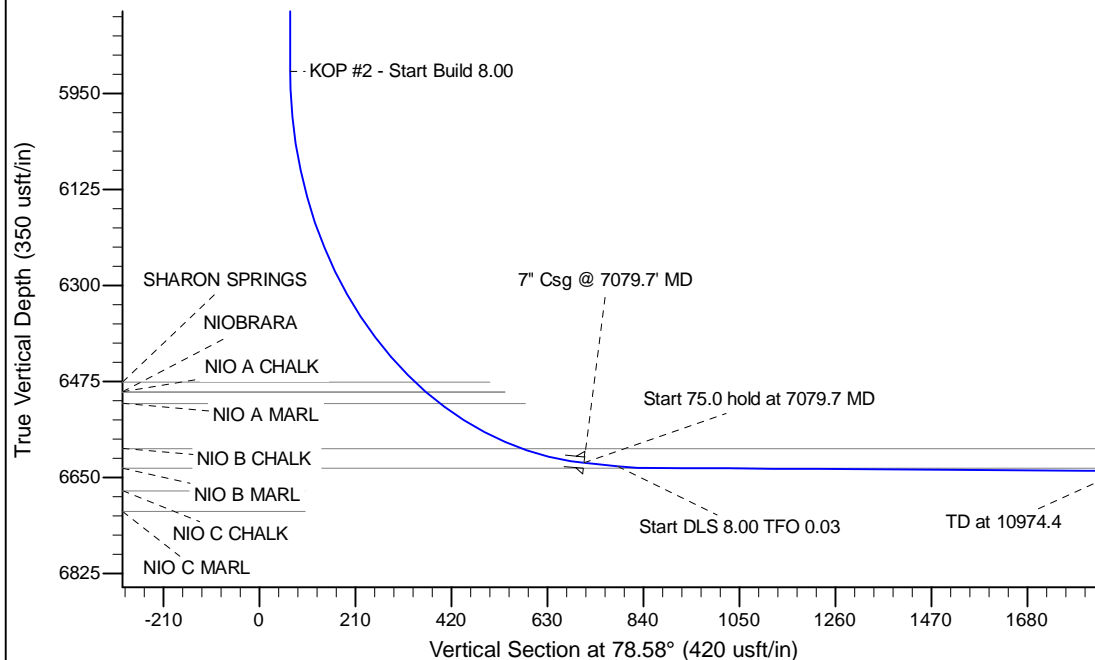
Project: Wattenberg Field
 Site: B (Sec.2-T05N-R64W) Weld County, CO
 Well: Wolfpack B02-66-1HN
 Wellbore: Original Drilling
 Design: APD - Rev 0

Northern Region Drilling

Geodetic System: US State Plane 1983
 Datum: North American Datum 1983
 Ellipsoid: GRS 1980
 Zone: Colorado Northern Zone
 System Datum: Mean Sea Level

SECTION DETAILS

Sec	MD	Inc	Azi	TVD	+N/-S	+E/-W	Dleg	TFace	VSept	Target
1	0.0	0.00	0.00	0.0	0.0	0.0	0.00	0.00	0.0	
2	1000.0	0.00	0.00	1000.0	0.0	0.0	0.00	0.00	0.0	
3	1799.9	16.00	353.16	1789.5	110.1	-13.2	2.00	353.16	8.9	
4	4042.7	16.00	353.16	3945.5	723.9	-86.8	0.00	0.00	58.2	
5	4842.6	0.00	0.00	4735.0	834.0	-100.0	2.00	180.00	67.1	
6	6017.2	0.00	0.00	5909.6	834.0	-100.0	0.00	0.00	67.1	
7	7079.7	85.00	89.19	6623.1	843.2	553.7	8.00	89.19	709.7	
8	7154.7	85.00	89.19	6629.7	844.3	628.4	0.00	0.00	783.1	
9	7213.5	89.70	89.19	6632.4	845.1	687.1	8.00	0.03	840.8	
10	10974.4	89.70	89.19	6651.8	898.2	4447.6	0.00	0.00	4537.4	Wolfpack B02-66-1HN BHL 2350'FNL & 660'FEL



WELL DETAILS: Wolfpack B02-66-1HN			
Ground Level:	4625.0	Latitude	40.426880
North	1399840.99	East	3271072.56
Longitude	-104.526300		
Plan: APD - Rev 0 (Wolfpack B02-66-1HN/Original Drilling)			
Created By:	Carrie Wilers	Date:	17:39, February 07 2013
Checked:		Date:	
Reviewed:		Date:	
Approved:		Date:	