

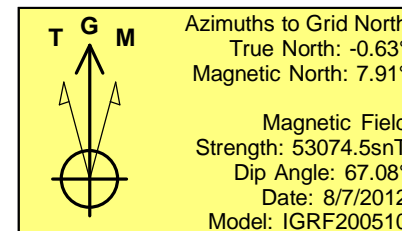
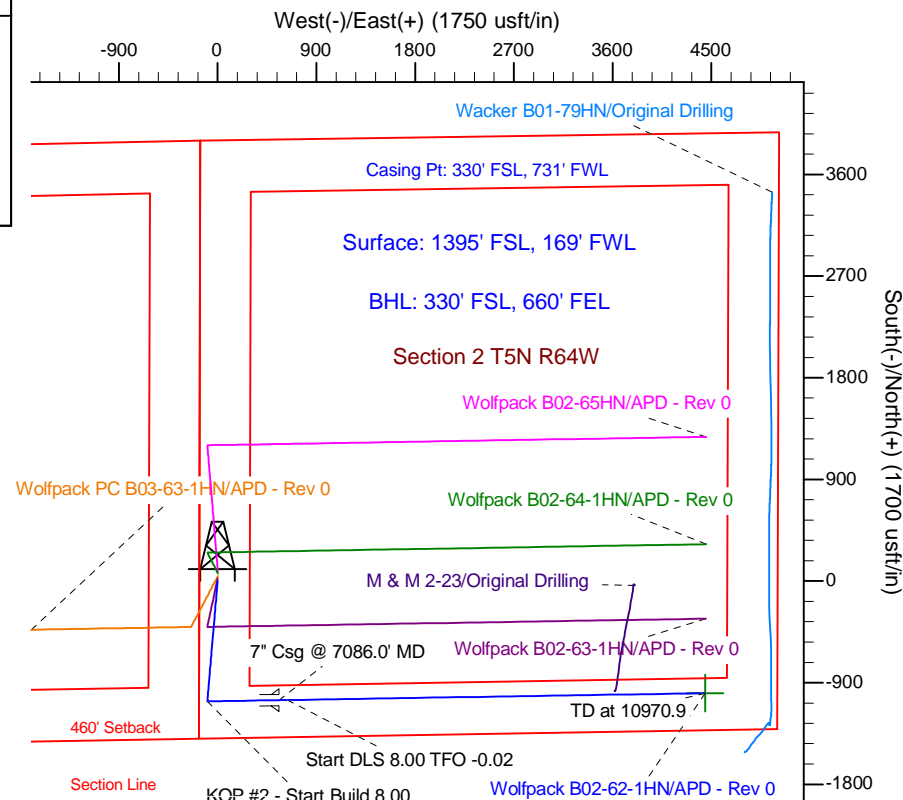
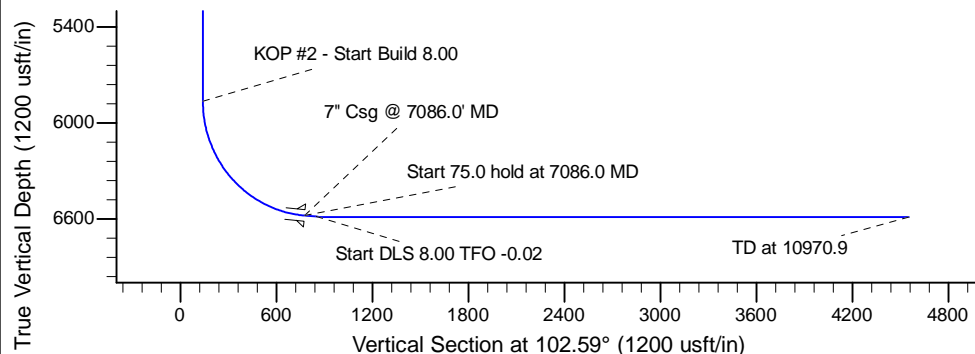
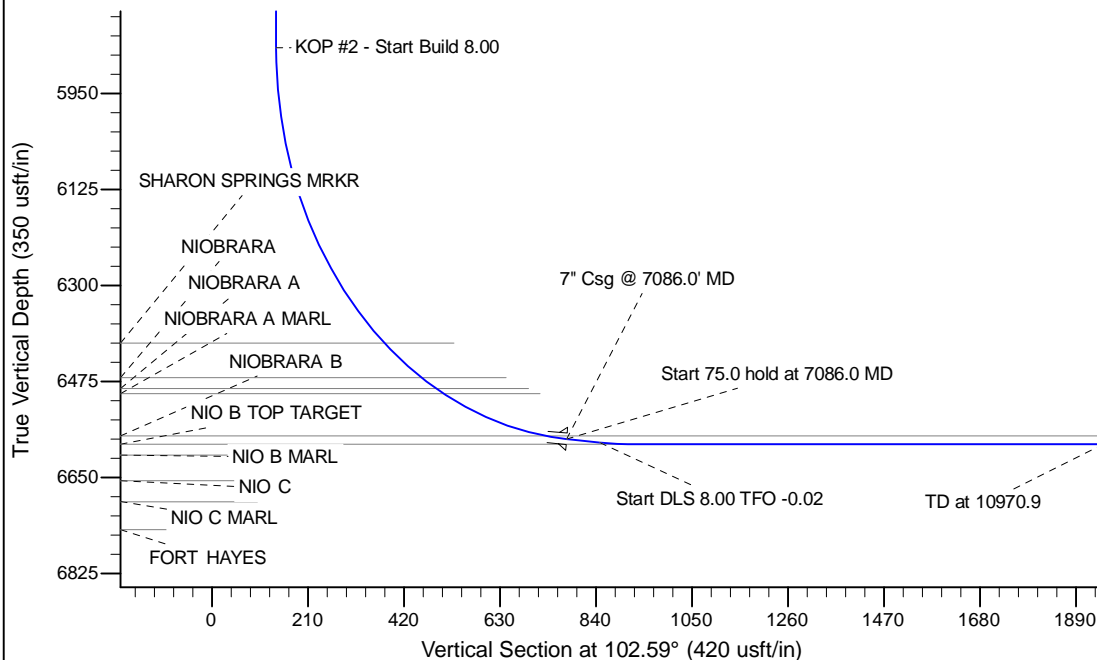
Project: Wattenberg Field
 Site: B (Sec.2-T05N-R64W) Weld County, CO
 Well: Wolfpack B02-62-1HN
 Wellbore: Original Drilling
 Design: APD - Rev 0

Northern Region Drilling

Geodetic System: US State Plane 1983
 Datum: North American Datum 1983
 Ellipsoid: GRS 1980
 Zone: Colorado Northern Zone
 System Datum: Mean Sea Level

SECTION DETAILS

Sec	MD	Inc	Azi	TVD	+N/-S	+E/-W	Dleg	TFace	VSect	Target
1	0.0	0.00	0.00	0.0	0.0	0.0	0.00	0.00	0.0	
2	1200.0	0.00	0.00	1200.0	0.0	0.0	0.00	0.00	0.0	
3	1919.1	17.98	185.04	1907.3	-111.5	-9.8	2.50	185.04	14.7	
4	4658.1	17.98	185.04	4512.7	-953.5	-84.2	0.00	0.00	125.8	
5	5377.2	0.00	0.00	5220.0	-1065.0	-94.0	2.50	180.00	140.5	
6	6023.5	0.00	0.00	5866.3	-1065.0	-94.0	0.00	0.00	140.5	
7	7086.0	85.00	89.09	6579.8	-1054.6	559.7	8.00	89.09	776.2	
8	7161.0	85.00	89.09	6586.3	-1053.4	634.4	0.00	0.00	848.8	
9	7223.5	90.00	89.09	6589.0	-1052.4	696.8	8.00	-0.02	909.5	
10	10970.9	90.00	89.09	6589.0	-992.8	4443.8	0.00	0.00	4553.3	Wolfpack B02-62-1HN BHL 330'FSL, 660'FEL



WELL DETAILS: Wolfpack B02-62-1HN			
Ground Level:	4615.0	Latitude	40.424910
Northing	1399123.18	Easting	3271063.74
Longitude	-104.526360		
Plan: APD - Rev 0 (Wolfpack B02-62-1HN/Original Drilling)			
Created By: Carrie Willers	Date: 13:21, August 15 2012		
Checked: _____	Date: _____		
Reviewed: _____	Date: _____		
Approved: _____	Date: _____		