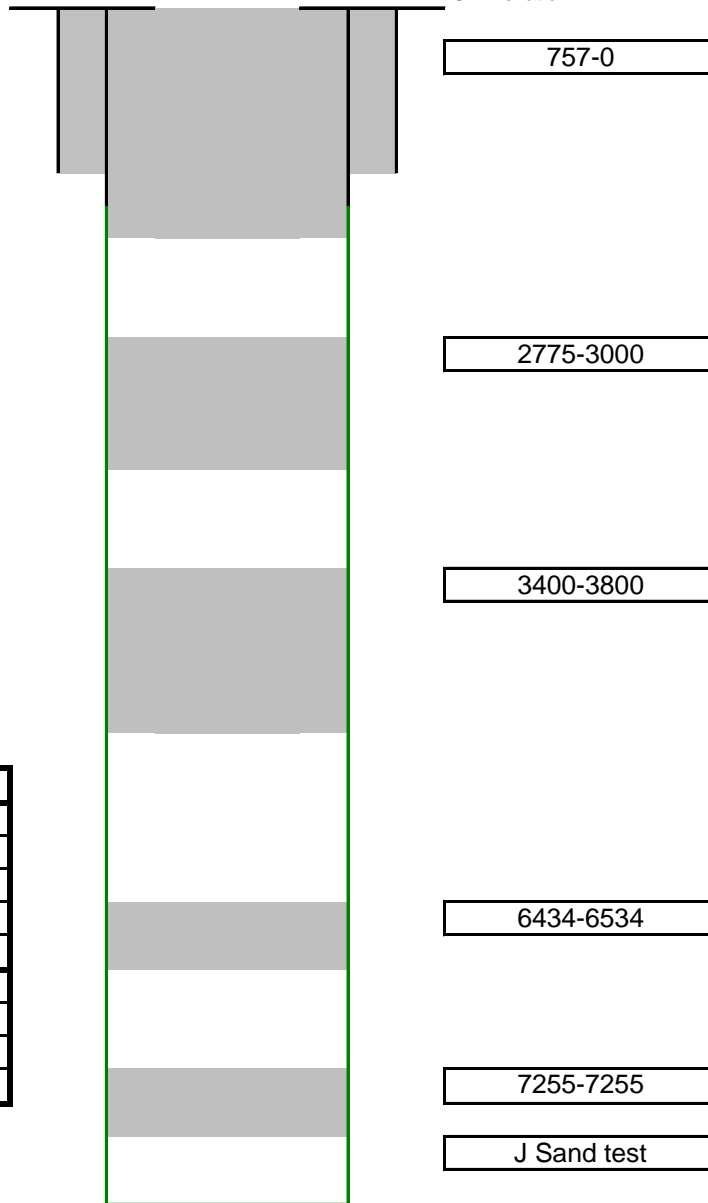




PDC Energy  
 Shirk-Miller 3-2  
 C NE NW 2 6N 63W 6 PM  
 Weld County, CO  
 Current Wellbore - NOT TO SCALE!!!  
 7/26/2012  
 API#: 05-123-07720

GL Elevation: 4724

Surface Casing:
12 1/4" @205 w/175 sx cmt



Perforations: none	
Old:	OH 7205-7315
	0
	0
	0
New:	0
	0
	0
	0

#### NOTES

Original plugging: 15 sx at 205', 10 sx at surface. Re-entry plugging : clean hole to bottom. Set plugs as follows: 1st stage 7155-7255, 2nd stage 6434-6534, 3rd stage 3400-3800, 4th stage 2775-3000, 5th stage 0-757