



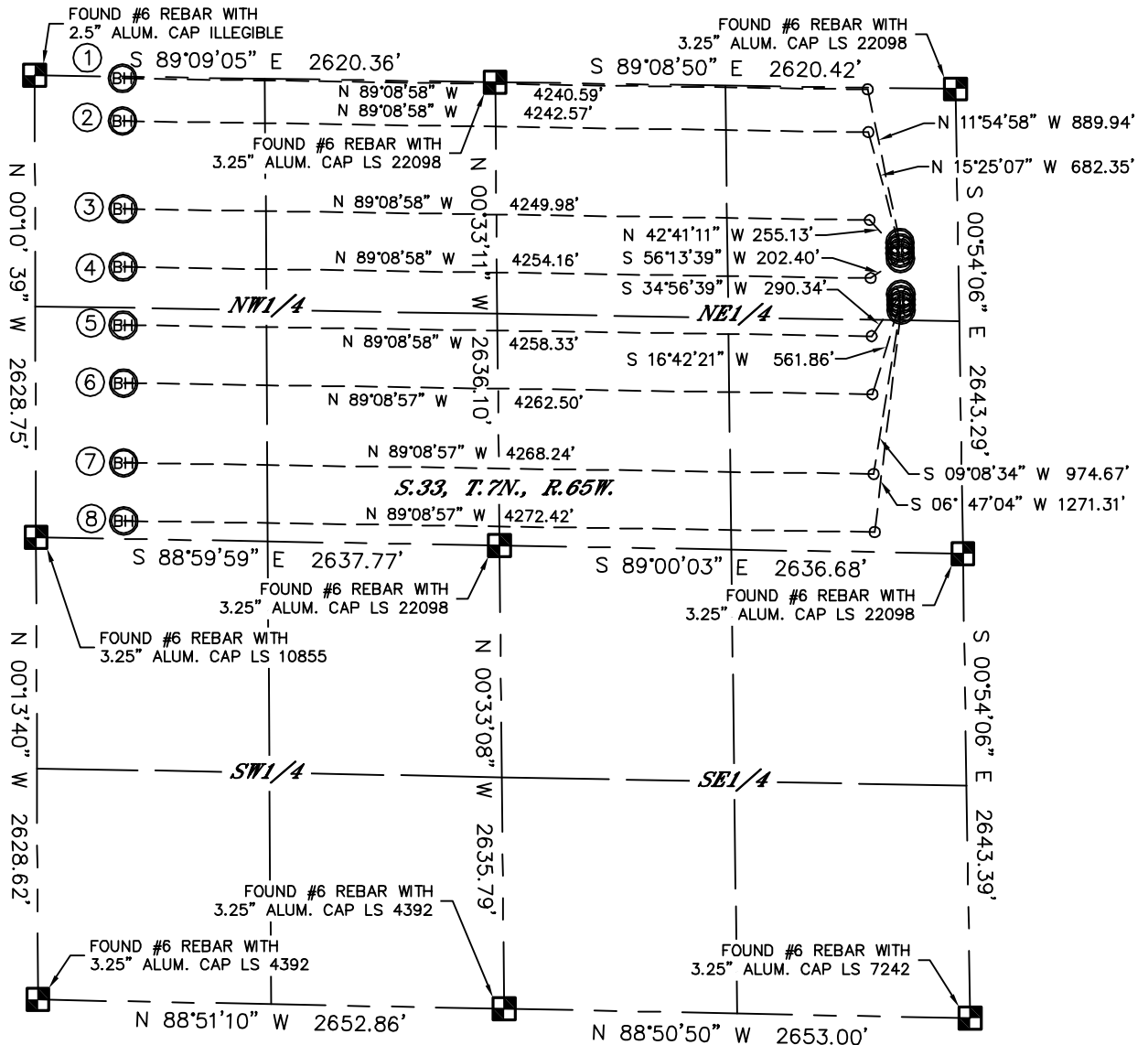
Lat40°, Inc. 1635 Foxtrail Drive, Suite 325 Loveland, CO 970-776-3321

MULTI-WELL PLAN

ALM 33V-HZ PADS

THIS MAP DOES NOT REPRESENT A BOUNDARY SURVEY

SECTION: 33
TOWNSHIP: 7N
RANGE: 65W



①
-BOTTOM HOLE-
ALM 33U-404
10' FNL
500' FWL
LAT-40.53823°N
LONG-104.67590°W

②
-BOTTOM HOLE-
ALM 33U-234
253' FNL
500' FWL
LAT-40.53756°N
LONG-104.67591°W

③
-BOTTOM HOLE-
ALM 33V-414
753' FNL
500' FWL
LAT-40.53619°N
LONG-104.67592°W

④
-BOTTOM HOLE-
ALM 33V-214
1083' FNL
500' FWL
LAT-40.53528°N
LONG-104.67593°W

⑤
-BOTTOM HOLE-
ALM 33V-404
1413' FNL
500' FWL
LAT-40.53438°N
LONG-104.67593°W

⑥
-BOTTOM HOLE-
ALM 33V-234
1743' FNL
500' FWL
LAT-40.53347°N
LONG-104.67594°W

⑦
-BOTTOM HOLE-
ALM 33W-214
2197' FNL
500' FWL
LAT-40.53222°N
LONG-104.67595°W

⑧
-BOTTOM HOLE-
ALM 33W-404
2527' FNL
500' FWL
LAT-40.53132°N
LONG-104.67596°W

LEGEND

- = ALIQUOT MONUMENT AS DESCRIBED
- = CALCULATED POSITION

DATE: rev.1/29/2013
PROJECT#: 2011242



Lat40°, Inc. 1635 Foxtrail Drive, Suite 325 Loveland, CO 970-776-3321

MULTI-WELL PLAN

ALM 33V-HZ PADS

SECTION: 33
TOWNSHIP: 7N
RANGE: 65W



DATE: rev.1/29/2013
PROJECT#: 2011242