

1625 Broadway  
Suite 2000  
Denver, CO 80202

Tel: 303.228.4000  
Fax: 303.228.4280

www.nobleenergyinc.com



March 5, 2013

Colorado Oil and Gas Conservation Commission  
The Chancery Building  
1120 Lincoln Street, Suite 801  
Denver, CO 80203  
Attn: Mr. Matt Lepore, Director

RE: CROW CREEK STATE AC36-78-1HN  
Niobrara New Drill  
Township 7 North, Range 63 West, 6th P.M.  
Section 36: SW/4SW/4: 270' FSL & 300' FWL (Surface Location)  
Section 36: SW/4SW/4: 718' FSL & 993' FWL (Beginning of Lateral)  
Section 36: NW/4NW/4: 535' FNL & 990' FWL (Bottom Hole Location)  
Weld County, Colorado

Dear Director:

Noble Energy, Inc. ("NEI") is planning to drill the captioned boundary well in accordance with the provisions of COGCC Rule 318A.e.

NEI's proposed wellbore spacing unit consists of the W/2 Section 36, T7N, R63W, creating a 320-acre wellbore spacing unit for the Niobrara formation. NEI is the only owner within the proposed wellbore spacing unit, therefore NEI hereby attests that no notice letters are required under COGCC Rule 318A(l).e.(6).

Enclosed are copies of the following documents to assist you in your review and approval of NEI's proposed APD for the captioned well:

- Map & plat illustrating proposed wellbore spacing unit.

Thank you for your attention to the enclosed. NEI respectfully requests that the COGCC review the enclosed information and approve the Application for Permit to Drill the captioned well.

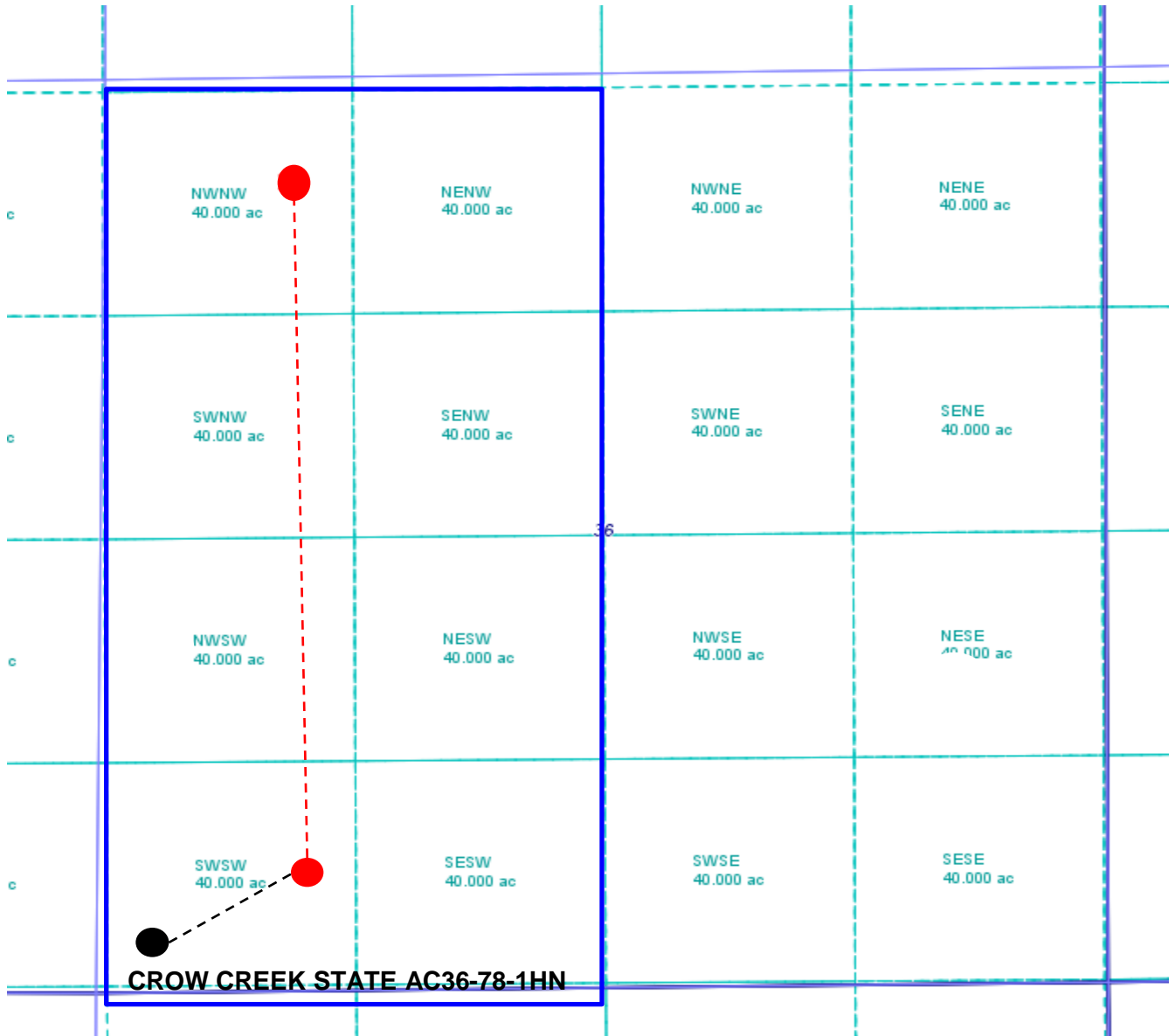
Sincerely,

Susan Miller  
Regulatory Analyst III  
Noble Energy Inc.

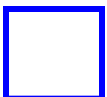
# Crow Creek State AC36-78-1HN

Proposed Spacing Unit – Noble Energy, Inc

W/2 Section 36, Township 7 North, Range 63 West



Legend



Proposed 320.00± acre spacing unit

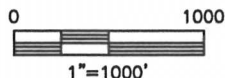
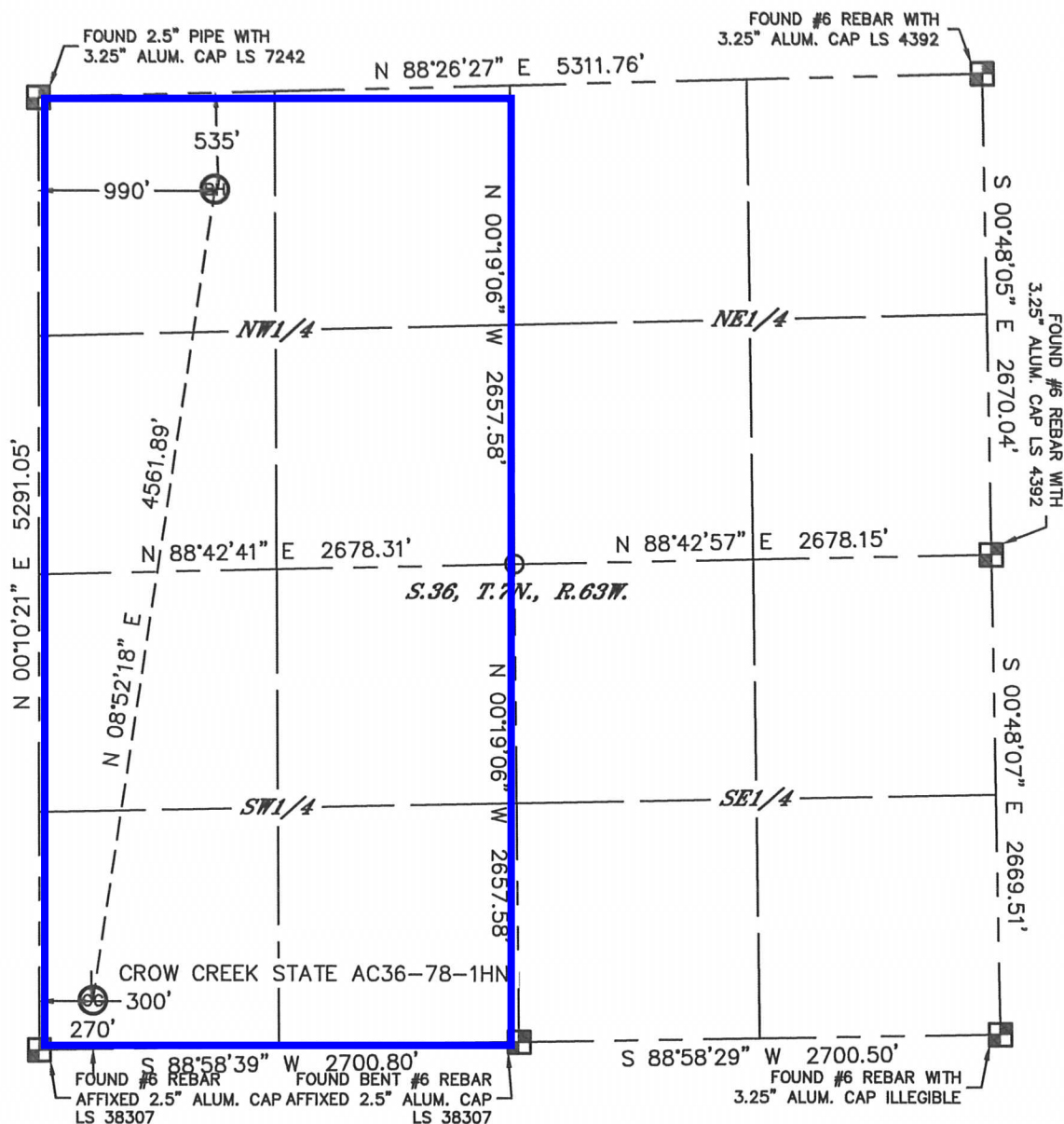


Bottom Hole Location

# WELL LOCATION CERTIFICATE

THIS MAP DOES NOT REPRESENT A BOUNDARY SURVEY

SECTION: 36  
TOWNSHIP: 7N  
RANGE: 63W



In accordance with a request from Greg Wilson with Noble Energy Inc., Lat40°, Inc. has determined the surface location of the CROW CREEK STATE AC36-78-1HN to be 270' from the SOUTH line and 300' from the WEST line and the bottom hole to be 535' from the NORTH line and 990' from the WEST line as measured at right angles from the section lines of Section 36, Township 7 North, Range 63 West of the Sixth Principal Meridian, County of Weld, State of Colorado.

I hereby state that this Well Location Certificate was prepared by me, or under my direct supervision, that the fieldwork was completed on 10/9/12, for and on behalf of Noble Energy Inc. That this is not a Land Survey Plat or an Improvement Survey Plat, and that it is not to be relied upon for establishment of fence, building, or other future improvement lines.

## NOTE:

- 1) Bearings shown are Grid Bearings of the Colorado State Plane Coordinate System, North Zone, North American Datum 1983/2007. The lineal dimensions as contained herein are based upon the "U.S. Survey Foot."
- 2) Ground elevations are based on an observed GPS elevation (NAVD 1988 DATUM).
- 3) NEAREST EXISTING WELL: NONE WITHIN SECTION
- 4) IMPROVEMENTS: See LOCATION DRAWING for all visible improvements within 400' of disturbed area.
- 5) SURFACE USE: RANGELAND
- 6) INSTRUMENT OPERATOR: ADAM KELLY

## NOTE

According to Colorado law, you must commence any legal action based upon any defect in this W.L.C. within three years after you discover such defect. In no event, may any action based upon any defect in this survey be commenced more than ten years after the date of the certificate shown hereon. (13-80-105 C.R.S.)

## LEGEND

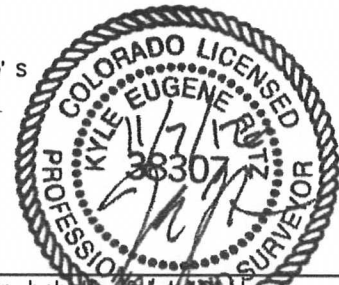
- = ALIQUOT MONUMENT AS DESCRIBED
- = CALCULATED POSITION

## SURFACE LOCATION

LAT: 40.52356°N  
LONG: 104.39317°W  
PDOP: 1.9  
ELEV: 4775'  
1/4, 1/4: SW1/4SW1/4  
NEAREST PROPERTY LINE: 270' S

## BOTTOM HOLE

LAT: 40.53591°N  
LONG: 104.39044°W



Kyle E. Rutz—On behalf of PLD AND ASSOCIATES, INC.  
Colorado Licensed Professional Land Surveyor No. 38307

DATE: 11/6/12  
PROJECT#: 2012141