

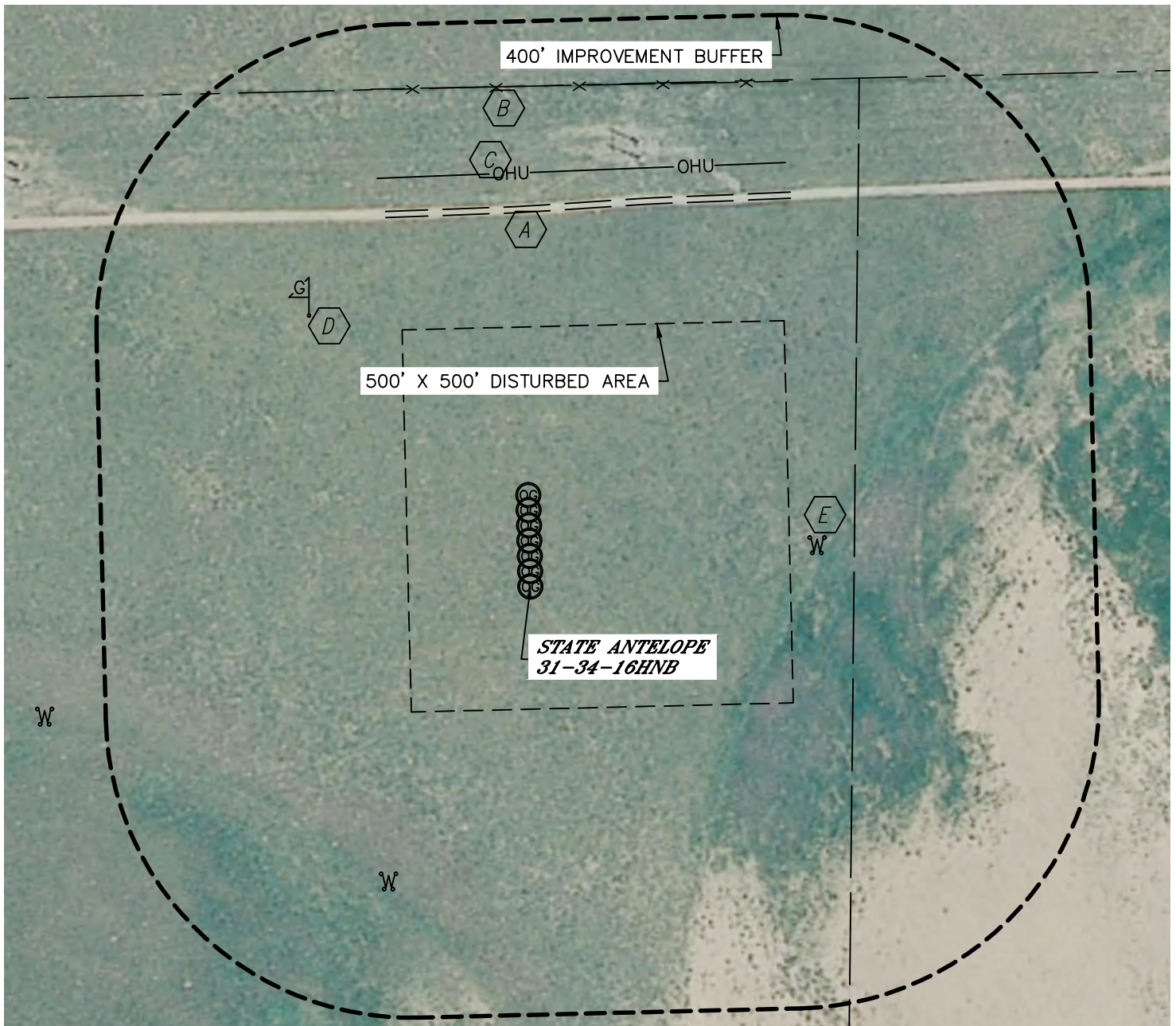


Lat40°, Inc. 1635 Foxtrail Drive, Suite 325 Loveland, CO 970-776-3321

# LOCATION DRAWING






STATE ANTELOPE P-16 PAD

SECTION: 16  
TOWNSHIP: 5N  
RANGE: 62W



## IMPROVEMENTS:

(MEASURED FROM PROPOSED STATE ANTELOPE 31-34-16HNB WELL LOCATION)

-  FIELD ROAD 494' N
-  FENCE 655' N
-  OVERHEAD UTILITY 542' N
-  GAS MARKER 458' NW
-  WOOD POSTS 379' NE, 428' SW



1"=200'

DATE: 3/20/2013  
PROJECT#: 2012071

NEAREST: BUILDING 5280'+, PUBLIC ROAD 5280'+,  
ABOVE GROUND UTILITY 542' N, RAILROAD 5280'+, PROPERTY LINE 655' N