

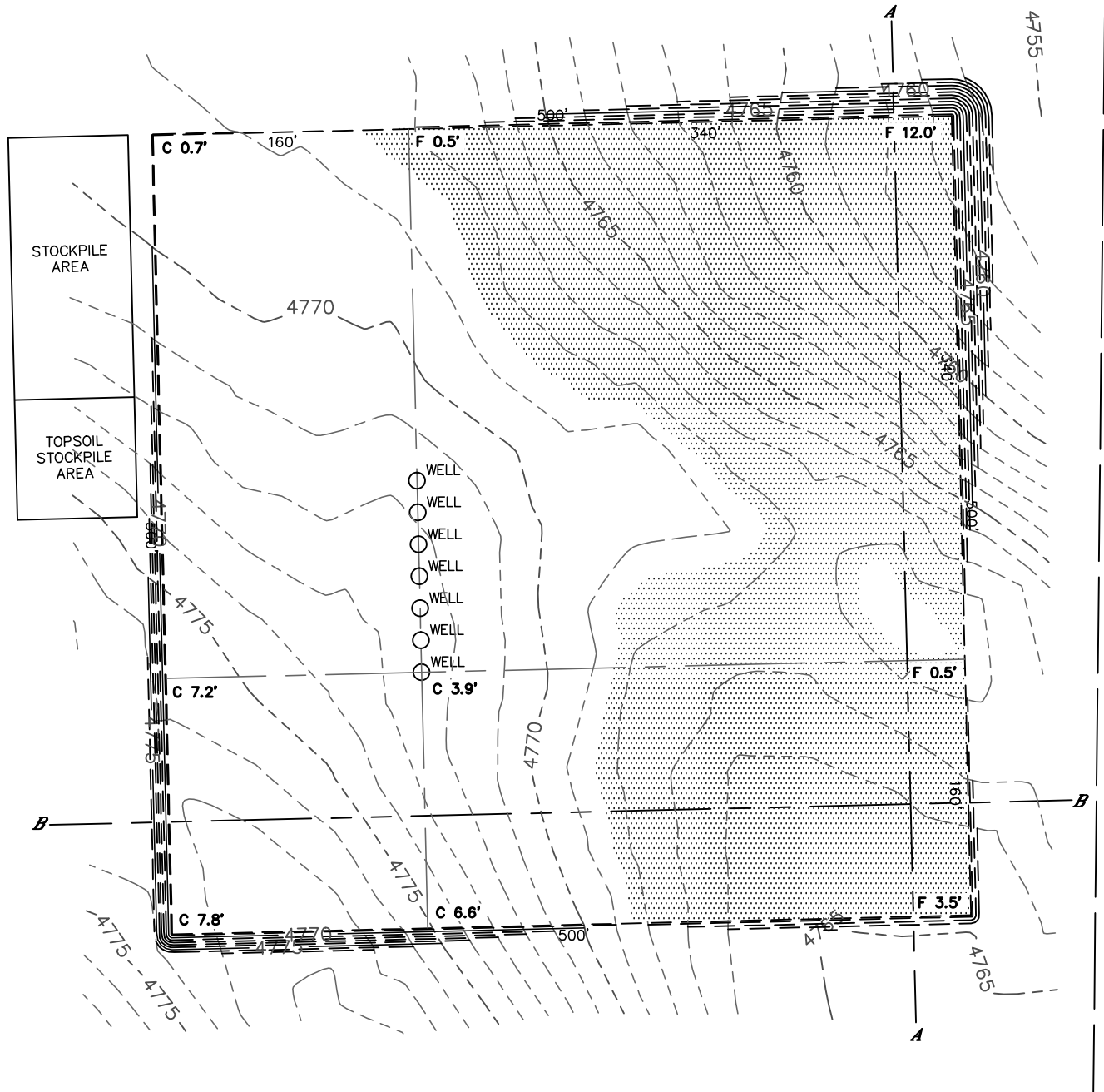


Lat40°, Inc. 1635 Foxtrail Drive, Suite 325 Loveland, CO 970-776-3321

# CUT & FILL DIAGRAM

## STATE ANTELOPE P-16 PAD

SECTION: 16  
TOWNSHIP: 5N  
RANGE: 62W



**OPERATOR: BONANZA CREEK ENERGY, INC.**

**LOCATION: 655' FNL, 1730' FEL**

**EXISTING ELEV= 4772.5'**

**PROPOSED ELEV= 4768.6'**

**DISTURBANCE= 6.2 ACRES**

**ESTIMATED EARTHWORK:**

**TOPSOIL= 9,948 CY**

**CUT= 16,248 CY**

**FILL= 16,238 CY**

**STOCKPILE:**

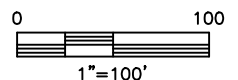
**EXCESS= 10 CY**

### NOTE:

- 1) Ground elevations are based on an observed GPS elevation (NAVD 1988 DATUM).
- 2) No allowance has been made for soil expansion or compaction.
- 3) Proposed elevation does not account for top soil removal.
- 4) Top soil volume assumes 12" depth across entire location.
- 5) Fill slopes 2:1
- 6) Cut slopes 1.5:1

### LEGEND

EX. CONTOUR	---
PRO. CONTOUR	---
FILL AREA	



DATE: 3/12/2013  
PROJECT#: 2012071

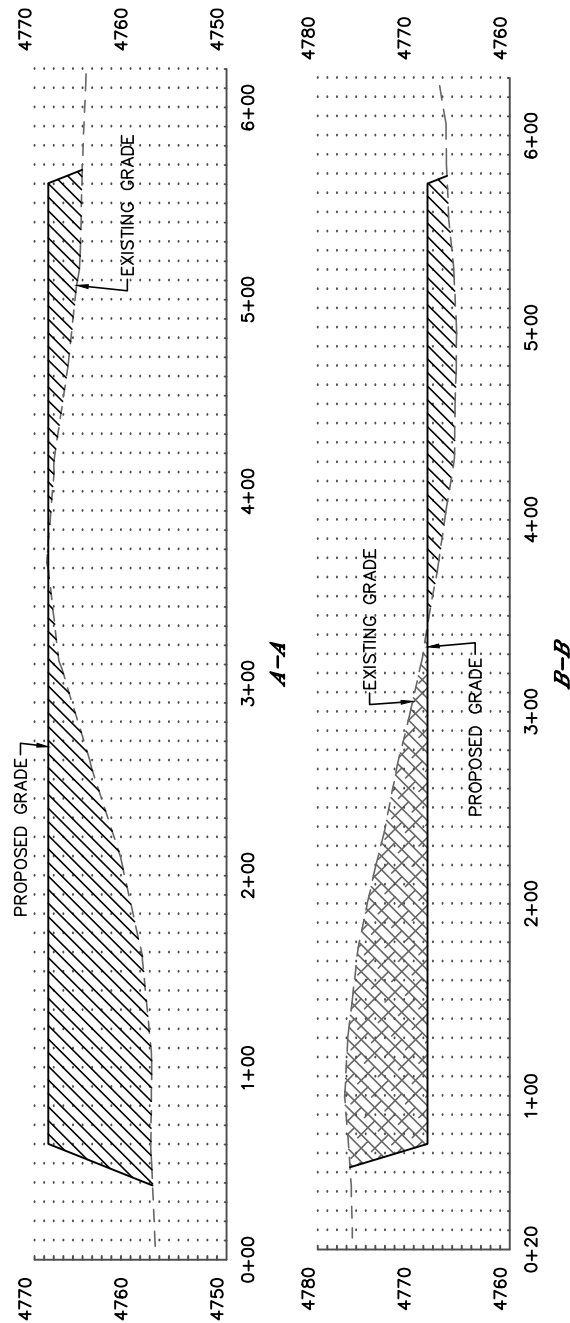


Lat40°, Inc. 1635 Foxtrail Drive, Suite 325 Loveland, CO 970-776-3321

# CROSS SECTION DIAGRAM

STATE ANTELOPE P-16 PAD

SECTION: 16  
TOWNSHIP: 5N  
RANGE: 62W



HORIZONTAL SCALE: 1"=100', VERTICAL SCALE: 1"=20'