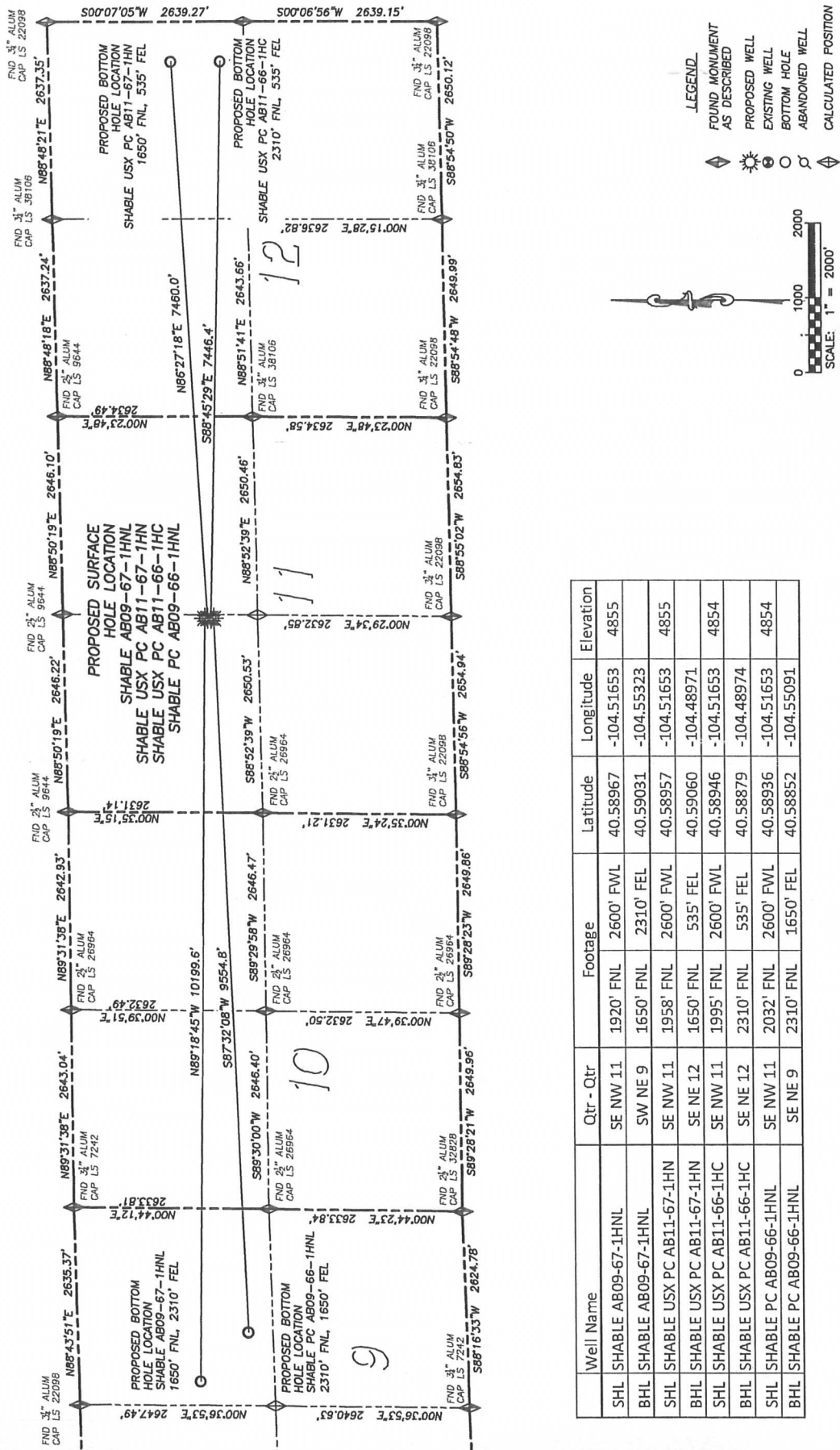


DALEY LAND SURVEYING, INC. PARKER, CO. 80134 303 953 9841  
 MULTI-WELL PAD DIRECTIONAL LAYOUT  
 SHABLE AB09-67-1HNL, SHABLE USX PC AB11-67-1HN,  
 SHABLE USX PC AB11-66-1HC & SHABLE PC AB09-66-1HNL  
 SECTION 11, TOWNSHIP 7 NORTH, RANGE 64 WEST OF THE 6TH PRINCIPAL MERIDIAN



Well Name	Qtr - Qtr	Footage	Latitude	Longitude	Elevation
SHL SHABLE AB09-67-1HNL	SE NW 11	1920' FNL	40.58967	-104.51653	4855
BHL SHABLE AB09-67-1HNL	SW NE 9	1650' FNL	40.59031	-104.55323	
SHL SHABLE USX PC AB11-67-1HN	SE NW 11	1958' FNL	40.58957	-104.51653	4855
BHL SHABLE USX PC AB11-67-1HN	SE NE 12	1650' FNL	40.59060	-104.48971	
SHL SHABLE USX PC AB11-66-1HC	SE NW 11	1995' FNL	40.58946	-104.51653	4854
BHL SHABLE USX PC AB11-66-1HC	SE NE 12	2310' FNL	40.58879	-104.48974	
SHL SHABLE PC AB09-66-1HNL	SE NW 11	2032' FNL	40.58936	-104.51653	4854
BHL SHABLE PC AB09-66-1HNL	SE NE 9	2310' FNL	40.58852	-104.55091	

LEGEND  
 FOUND MONUMENT AS DESCRIBED  
 PROPOSED WELL  
 EXISTING WELL  
 BOTTOM HOLE  
 ABANDONED WELL  
 CALCULATED POSITION

NOTICE: According to Colorado law you MUST commence any legal action based upon any defect in this W.L.C. within the time period indicated hereon. This W.L.C. was commenced more than ten years from the date of the certification shown hereon.

DALEY LAND SURVEYING, INC. PARKER, CO. 80134 303 953 9841

### MULTI-WELL PAD LOCATION DRAWING

SHABLE AB09-67-1HNL, SHABLE USX PC AB11-67-1HN,  
SHABLE USX PC AB11-66-1HC & SHABLE PC AB09-66-1HNL  
SECTION 11, TOWNSHIP 7 NORTH, RANGE 64 WEST OF THE 6TH PRINCIPAL MERIDIAN

