

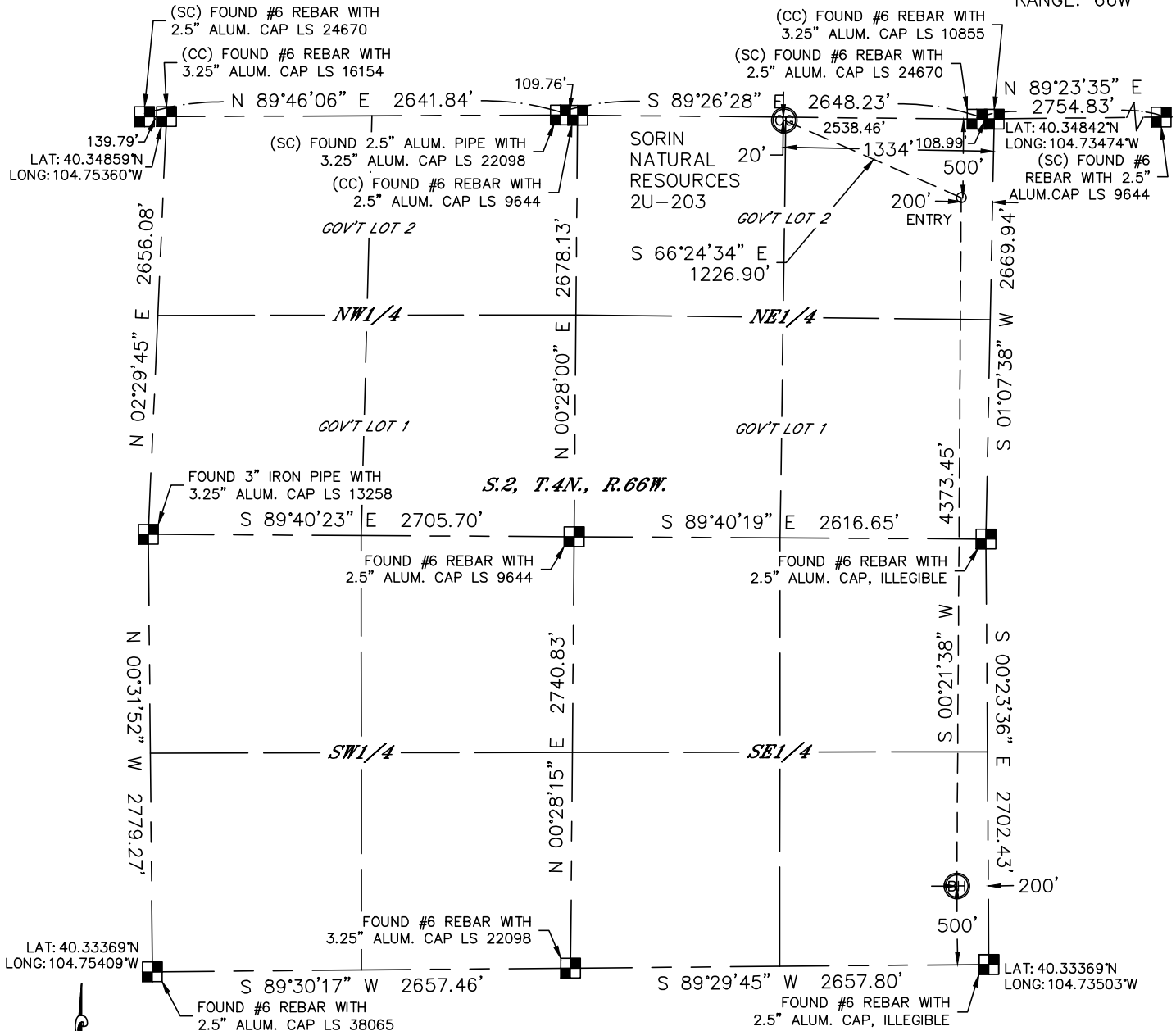


Lat40°, Inc. 1635 Foxtrail Drive, Suite 325 Loveland, CO 970-776-3321

WELL LOCATION CERTIFICATE

THIS MAP DOES NOT REPRESENT A BOUNDARY SURVEY

SECTION: 2
TOWNSHIP: 4N
RANGE: 66W



In accordance with a request from Jeff Dillingham with PDC ENERGY Lat40°, Inc. has determined the surface location of the SORIN NATURAL RESOURCES 2U-203 to be 20' from the NORTH line and 1334' from the EAST line and the bottom hole to be 500' from the SOUTH line and 200' from the EAST line as measured at right angles from the section lines of Section 2, Township 4 North, Range 66 West of the Sixth Principal Meridian, County of Weld, State of Colorado.

I hereby state that this Well Location Certificate was prepared by me, or under my direct supervision, that the fieldwork was completed on 11/21/2012, for and on behalf of PDC ENERGY That this is not a Land Survey Plat or an Improvement Survey Plat, and that it is not to be relied upon for establishment of fence, building, or other future improvement lines.

NOTE:

- 1) Bearings shown are Grid Bearings of the Colorado State Plane Coordinate System, North Zone, North American Datum 1983/2007. The lineal dimensions as contained herein are based upon the "U.S. Survey Foot."
- 2) Ground elevations are based on an observed GPS elevation (NAVD 1988 DATUM).
- 3) IMPROVEMENTS: See LOCATION DRAWING for all visible improvements within 400' of disturbed area.
- 4) SURFACE USE: CROP LAND
- 5) INSTRUMENT OPERATOR: BRIAN ROTTINGHAUS

NOTE

According to Colorado law, you must commence any legal action based upon any defect in this W.L.C. within three years after you discover such defect. In no event, may any action based upon any defect in this survey be commenced more than ten years after the date of the certificate shown hereon. (13-80-105 C.R.S.)

LEGEND

- = ALIQUOT MONUMENT AS DESCRIBED
- = CALCULATED POSITION

SURFACE LOCATION

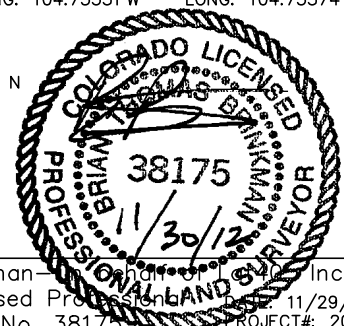
LAT: 40.34844°N
LONG: 104.73953°W
PDOP: 1.8
ELEV: 4671'
1/4,1/4: NW1/4NE1/4
NEAREST PROPERTY LINE: 20' N

ENTRY POINT

LAT: 40.34706°N
LONG: 104.73551°W

BOTTOM HOLE

LAT: 40.33506°N
LONG: 104.73574°W

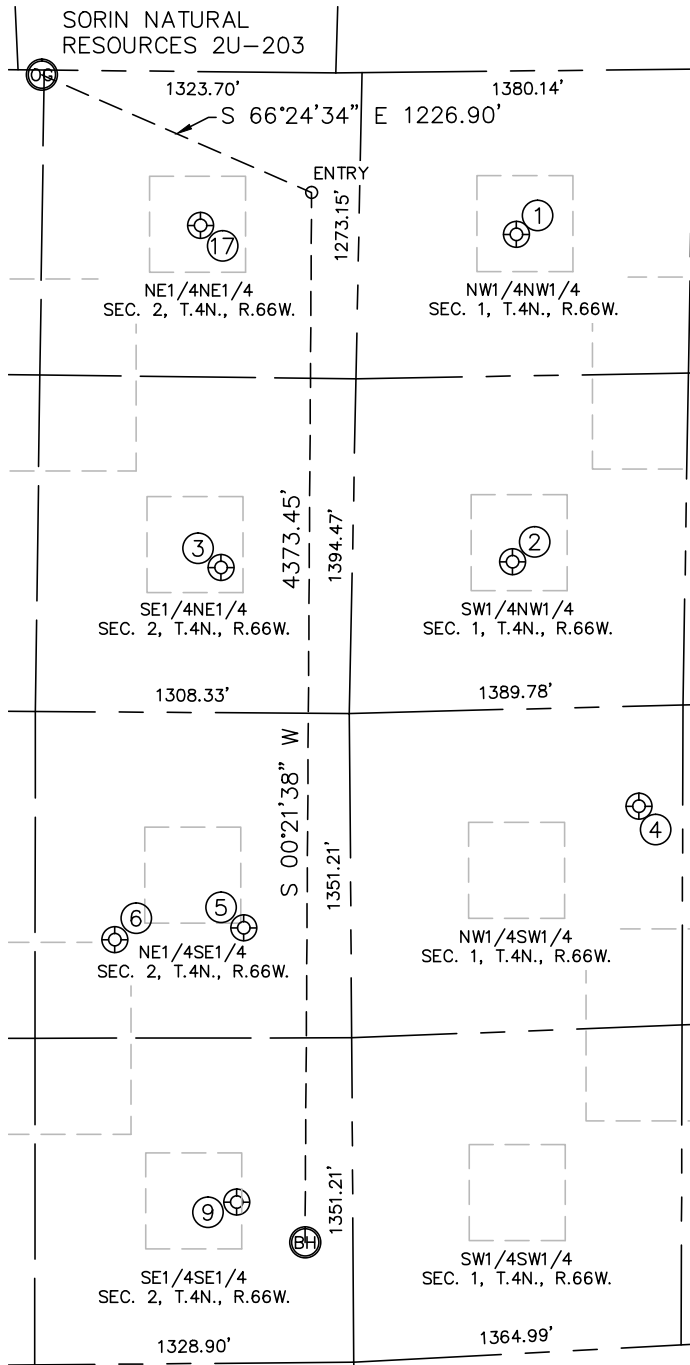


Brian T. Brinkman—Lat40°, Inc.
Colorado Licensed Professional Land Surveyor
Land Surveyor No. 38175
PROJECT#: 2012164

SITE SKETCH

SORIN NATURAL RESOURCES 2U-203

SECTION: 2
TOWNSHIP: 4N
RANGE: 66W



- ①
 LOEFFLER 1-18
 NW1/4NW1/4
 681' FNL
 655' FWL
 LAT-40.34656"N
 LONG-104.73246"W
 PDOP: 2.8
 ELEV: 4666'

②
 LOEFFLER 2-24
 SW1/4NW1/4
 2044' FNL
 666' FWL
 LAT-40.34282"N
 LONG-104.73256"W
 PDOP: 2.3
 ELEV: 4666'

③
 DURNELL 1
 SE1/4NE1/4
 2066' FNL
 547' FEL
 LAT-40.34278"N
 LONG-104.73691"W
 PDOP: 1.5
 ELEV: 4667'

④
 GEMINI K1-12
 NW1/4SW1/4
 2250' FSL
 1203' FWL
 LAT-40.34001"N
 LONG-104.73070"W
 PDOP: 1.7
 ELEV: 4686'

⑤
 API 2-9
 NE1/4SE1/4
 1813' FSL
 446' FEL
 LAT-40.33866"N
 LONG-104.73662"W
 PDOP: 1.5
 ELEV: 4705'

⑥
 API 5
 NE1/4SE1/4
 1768' FSL
 984' FEL
 LAT-40.33854"N
 LONG-104.73854"W
 PDOP: 1.5
 ELEV: 4706'

⑨
 API 2-16
 SE1/4SE1/4
 670' FSL
 484' FEL
 LAT-40.33553"N
 LONG-104.73676"W
 PDOP: 1.5
 ELEV: 4705'

⑪
 MATSUSHIMA PM K2-1
 NE1/4NE1/4
 641' FNL
 660' FEL
 LAT-40.34670"N
 LONG-104.73717"W
 PDOP: 2.0
 ELEV: 4669'

