

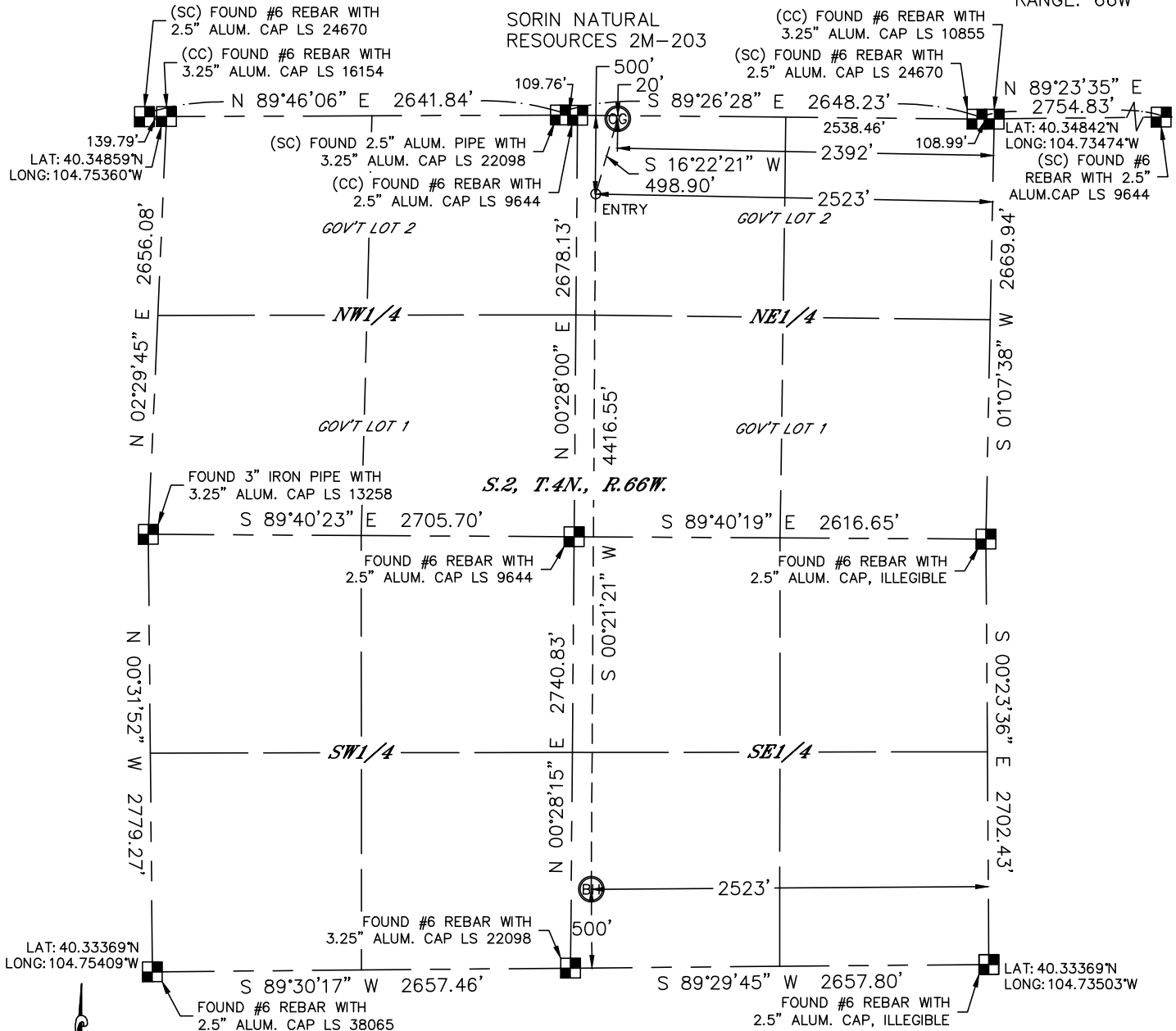


Lat40°, Inc. 1635 Foxtrail Drive, Suite 325 Loveland, CO 970-776-3321

# WELL LOCATION CERTIFICATE

THIS MAP DOES NOT REPRESENT A BOUNDARY SURVEY

SECTION: 2  
TOWNSHIP: 4N  
RANGE: 66W



In accordance with a request from Jeff Dillingham with PDC ENERGY Lat40°, Inc. has determined the surface location of the SORIN NATURAL RESOURCES 2M-203 to be 20' from the NORTH line and 2392' from the EAST line and the bottom hole to be 500' from the SOUTH line and 2523' from the EAST line as measured at right angles from the section lines of Section 2, Township 4 North, Range 66 West of the Sixth Principal Meridian, County of Weld, State of Colorado.

I hereby state that this Well Location Certificate was prepared by me, or under my direct supervision, that the fieldwork was completed on 11/21/2012, for and on behalf of PDC ENERGY That this is not a Land Survey Plat or an Improvement Survey Plat, and that it is not to be relied upon for establishment of fence, building, or other future improvement lines.

## NOTE:

- 1) Bearings shown are Grid Bearings of the Colorado State Plane Coordinate System, North Zone, North American Datum 1983/2007. The lineal dimensions as contained herein are based upon the "U.S. Survey Foot."
- 2) Ground elevations are based on an observed GPS elevation (NAVD 1988 DATUM).
- 3) IMPROVEMENTS: See LOCATION DRAWING for all visible improvements within 400' of disturbed area.
- 4) SURFACE USE: CROP LAND
- 5) INSTRUMENT OPERATOR: BRIAN ROTTINGHAUS

## NOTE

According to Colorado law, you must commence any legal action based upon any defect in this W.L.C. within three years after you discover such defect. In no event, may any action based upon any defect in this survey be commenced more than ten years after the date of the certificate shown hereon. (13-80-105 C.R.S.)

## LEGEND

- = ALIQUOT MONUMENT AS DESCRIBED
- = CALCULATED POSITION

## SURFACE LOCATION

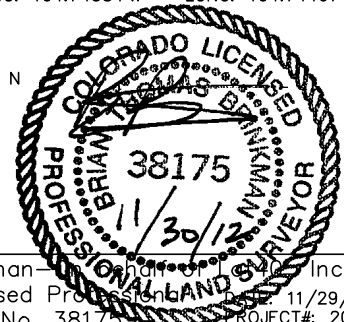
LAT: 40.34849N  
LONG: 104.74332W  
PDOP: 1.7  
ELEV: 4673'  
1/4,1/4: NW1/4NE1/4  
NEAREST PROPERTY LINE: 20' N

## ENTRY POINT

LAT: 40.34718N  
LONG: 104.74384W

## BOTTOM HOLE

LAT: 40.33506N  
LONG: 104.74407W



Brian T. Brinkman—Lat40°, Inc.  
Colorado Licensed Professional Land Surveyor  
Land Surveyor No. 38175 PROJECT#: 2012164

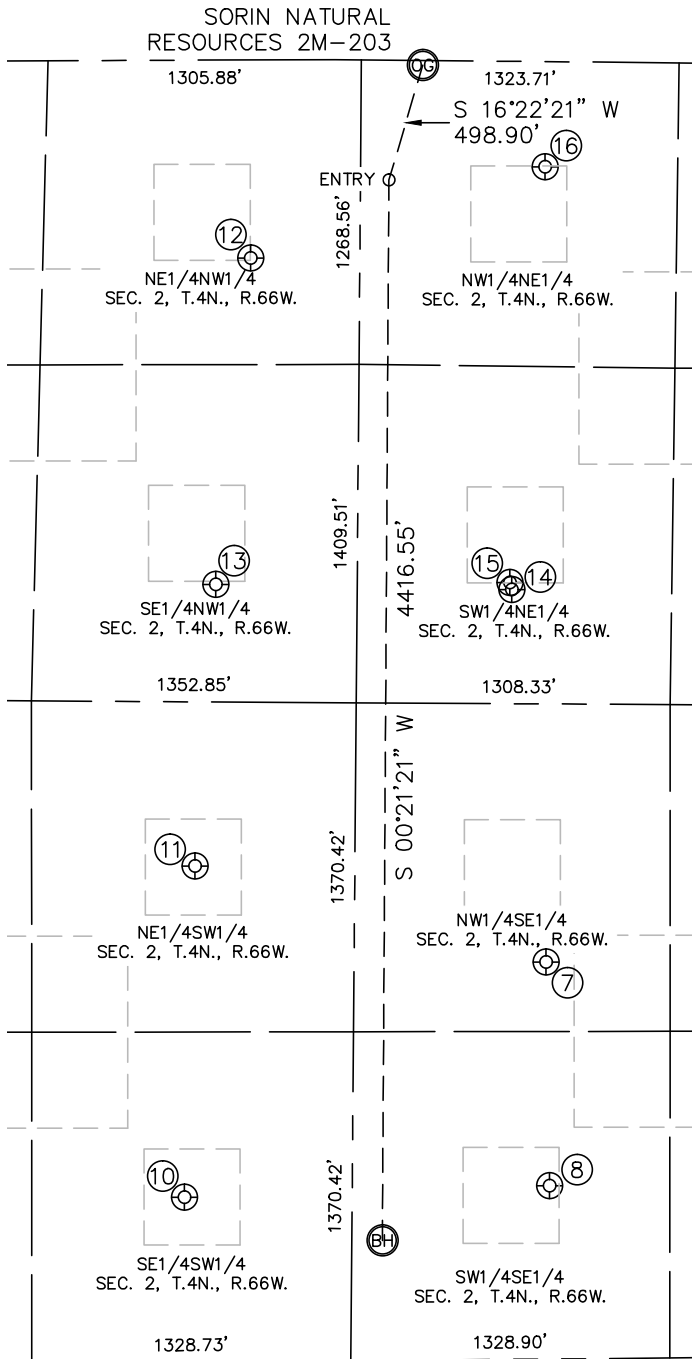


Lat40°, Inc. 1635 Foxtrail Drive, Suite 325 Loveland, CO 970-776-3321

# SITE SKETCH

SORIN NATURAL RESOURCES 2M-203

SECTION: 2  
TOWNSHIP: 4N  
RANGE: 66W



⑦

API 2-10  
NW1/4SE1/4  
1654' FSL  
834' FEL  
LAT-40.33823°N  
LONG-104.74159°W  
PDOP: 1.5  
ELEV: 4704'

⑧

API 2-15  
SW1/4SE1/4  
722' FSL  
1826' FEL  
LAT-40.33567°N  
LONG-104.74157°W  
PDOP: 1.4  
ELEV: 4708'

⑩

HILL 1-A  
SE1/4SW1/4  
687' FSL  
1970' FWL  
LAT-40.33557°N  
LONG-104.74703°W  
PDOP: 1.8  
ELEV: 4709'

⑪

HILL 3-10  
NE1/4SW1/4  
2066' FSL  
2027' FWL  
LAT-40.33936°N  
LONG-104.74683°W  
PDOP: 2.3  
ELEV: 4707'

⑫

WERNING 3-2  
NE1/4NW1/4  
826' FNL  
2183' FWL  
LAT-40.34630°N  
LONG-104.74592°W  
PDOP: 1.9  
ELEV: 4674'

⑬

WERNING 6-2  
SE1/4NW1/4  
2184' FNL  
2098' FWL  
LAT-40.34257°N  
LONG-104.74648°W  
PDOP: 1.7  
ELEV: 4673'

⑭

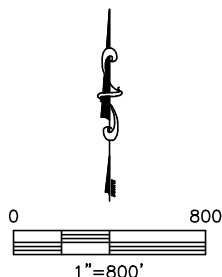
WERNING 7-2  
SW1/4NE1/4  
2200' FNL  
1978' FEL  
LAT-40.34249°N  
LONG-104.74206°W  
PDOP: 1.8  
ELEV: 4671'

⑮

WERNING 7-2B  
SW1/4NE1/4  
2172' FNL  
1987' FEL  
LAT-40.34257°N  
LONG-104.74209°W  
PDOP: 2.0  
ELEV: 4671'

⑯

LOPRESTO PM K2-2  
NW1/4NE1/4  
439' FNL  
1874' FEL  
LAT-40.34731°N  
LONG-104.74150°W  
PDOP: 1.9  
ELEV: 4672'



DATE: 11/29/2012  
PROJECT#: 2012164