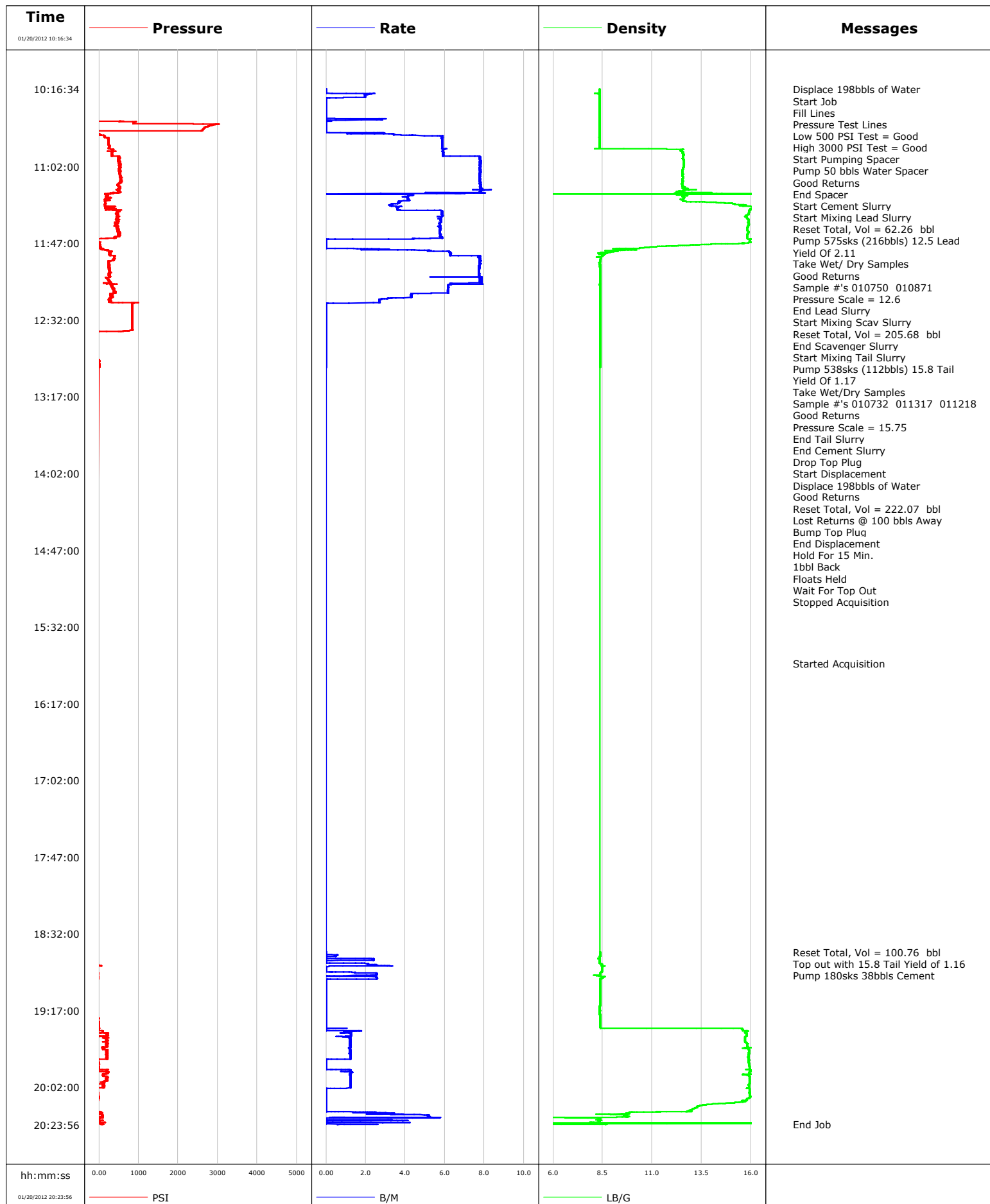
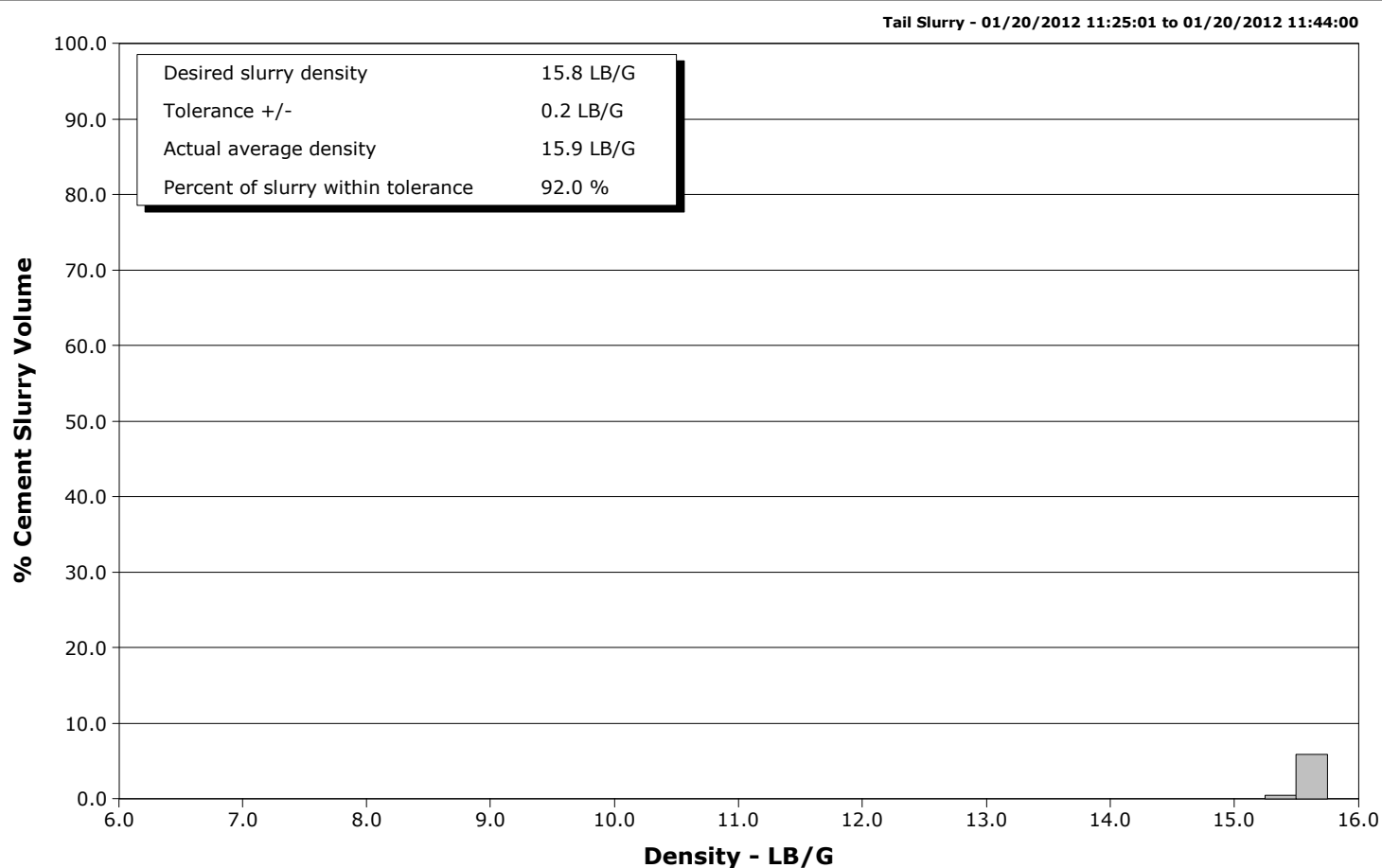
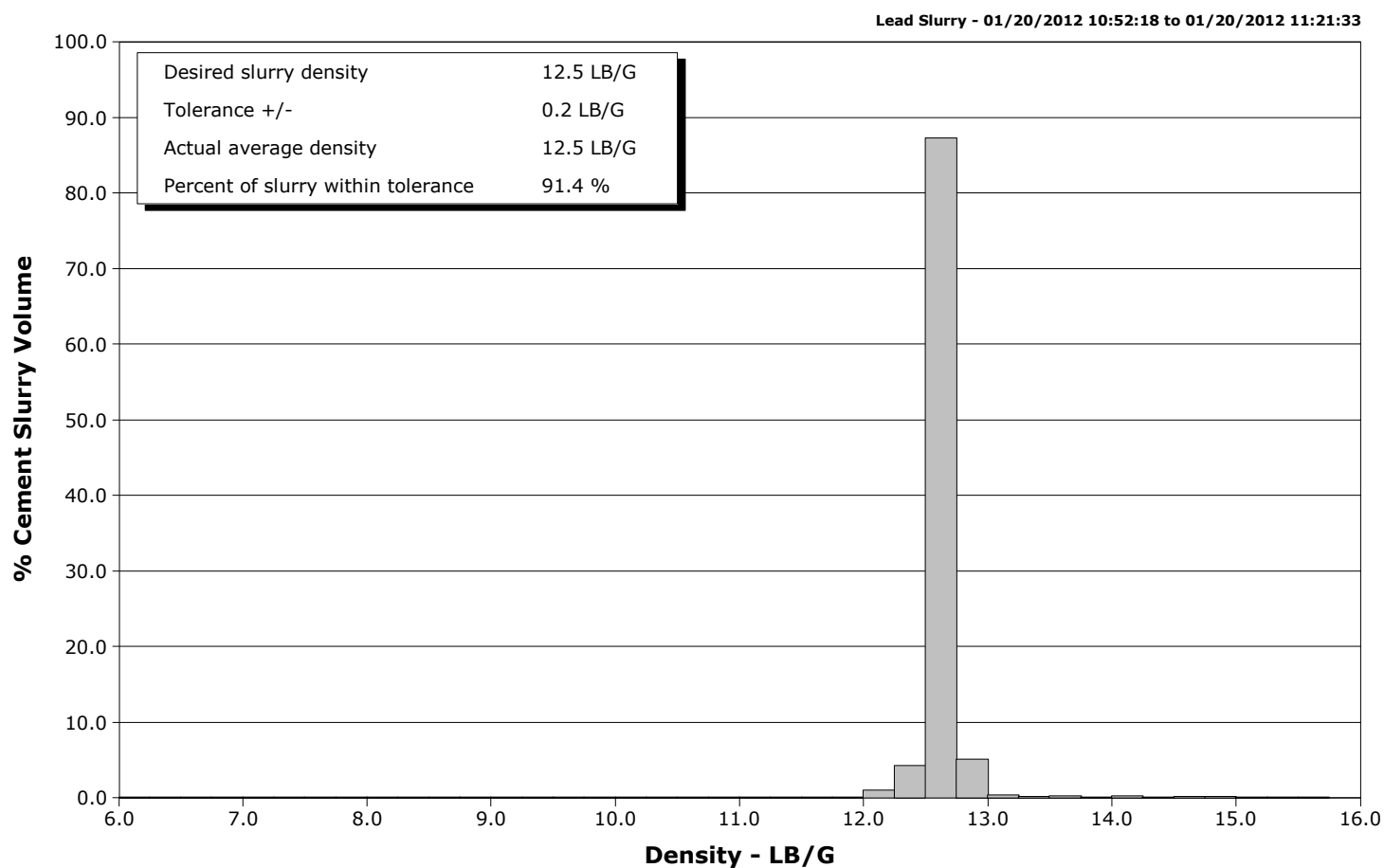


Well	RMCCS STATE #1	Client	SLUMBERGER CARBON SERVICES
Field	CRAIG, CO	SIR No.	701234
Engineer	DANT RYAN/TED HANSEN	Job Type	Cem Surface Casing
Country	United States	Job Date	01-19-2012



Well RMCCS STATE #1
Field CRAIG, CO
Engineer DANT RYAN/TED HANSEN
Country United States

Client SLUMBERGER CARBON SERVICES
SIR No. 701234
Job Type Cem Surface Casing
Job Date 01-19-2012



				Customer SLUMBERGER CARBON SERVICES			Job Number 701234						
Well RMCCS STATE #1 RMCCS STATE #1				Location (legal) CRAIG, CO.			Schlumberger Location						
Field CRAIG, CO				Formation Name/Type Shale			Deviation deg		Bit Size 17.5 in				
County MOFFAT				State/Province Colorado			Well MD 1362.0 ft		Well TVD 1362.0 ft				
Well Master 0631328658				API/UWI			BHP psi		BHST 100 degF				
Rig Name PATTERSON 166				Drilled For Disposal			Service Via Land			BHCT 85 degF			
Offshore Zone				Well Class New			Well Type Development			Pore Press. Gradient lb/gal			
Drilling Fluid Type Bentonite				Max. Density 8.70 lb/gal			Plastic Viscosity 5.000 cP						
Service Line Cementing				Job Type Cem Surface Casing									
Max. Allowed Tub. Press 3000 psi				Max. Allowed Ann. Press 500 psi			WH Connection Single Cement head						
Service Instructions CEMENT 13 3/8 SURFACE CASSING PUMP 50BBLs OF WATER SPACER PUMP 575SKS (216BBLs) 12.5 LEAD YIELD OF 2.11 PUMP 538SKS (112BBLs) 15.8 TAIL YIELD OF 1.17 DISPLACE 208BBLs OF WATER				Casing/Liner									
				Depth, ft		Size, in		Weight, lb/ft		Grade		Thread	
				20.0		20.0		94.0		N/A		N/A	
				1362.0		13.4		54.5		J55		8RD	
				Tubing/Drill Pipe									
				T/D		Depth, ft		Size, in		Weight, lb/ft		Grade	
Perforations/Open Hole													
Top, ft		Bottom, ft		shot/ft		No. of Shots		Total Interval					
ft		ft						ft					
ft		ft						Diameter					
ft		ft						in					
Treat Down Casing				Displacement bbl				Packer Type					
Tubing Vol. bbl				Casing Vol. bbl				Annular Vol. bbl					
								Packer Depth ft					
								Openhole Vol. bbl					
Casing/Tubing Secured <input checked="" type="checkbox"/>				1 Hole Vol. Circulated prior to Cement <input checked="" type="checkbox"/>				Casing Tools					
Lift Pressure 528 psi				Shoe Type Float				Squeeze Job					
Pipe Rotated <input type="checkbox"/>				Pipe Reciprocated <input type="checkbox"/>				Shoe Depth 1362.0 ft					
No. Centralizers				Top Plugs 1				Bottom Plugs					
Cement Head Type Single				Stage Tool Type				Tool Depth ft					
Job Scheduled For Jan/19/2012 09:00				Arrived on Location Jan/19/2012 09:00				Leave Location Jan/20/2012					
Collar Type Float				Tail Pipe Size in				Tail Pipe Depth ft					
Collar Depth 1272.0 ft				Sqz. Total Vol. bbl									
Date	Time 24-hr clock	Treating Pressure PSI	Flow Rate B/M	Density LB/G	Volume BBL	Message							
01/20/2012	10:16:34	-113	0.0	8.34	19.1	Started Acquisition							
01/20/2012	10:18:14	-113	0.0	8.35	19.1								
01/20/2012	10:19:11	-63	1.0	8.28	19.1	Start Job							
01/20/2012	10:19:13	-52	1.5	8.23	19.1	Fill Lines							
01/20/2012	10:19:23	-51	2.4	8.26	19.5	Pressure Test Lines							
01/20/2012	10:19:24	-51	2.4	8.27	19.6	Low 500 PSI Test = Good							
01/20/2012	10:19:25	-52	2.3	8.27	19.6	High 3000 PSI Test = Good							
01/20/2012	10:19:27	-55	2.2	8.32	19.7	Start Pumping Spacer							
01/20/2012	10:19:30	-55	2.2	8.32	19.8	Pump 50 bbls Water Spacer							
01/20/2012	10:19:31	-58	2.2	8.32	19.8	Good Returns							
01/20/2012	10:19:54	-68	2.0	8.34	20.6								
01/20/2012	10:21:34	-68	2.0	8.34	23.9								
01/20/2012	10:23:14	-112	0.0	8.35	0.0								
01/20/2012	10:24:54	-113	0.0	8.35	0.0								
01/20/2012	10:26:34	-112	0.0	8.35	0.0								
01/20/2012	10:28:14	-113	0.0	8.35	0.0								
01/20/2012	10:29:54	-113	0.0	8.35	0.0								
01/20/2012	10:31:34	-113	0.0	8.35	0.0								
01/20/2012	10:33:14	-113	0.0	8.35	0.0								
01/20/2012	10:34:54	-104	0.0	8.35	2.3								
01/20/2012	10:36:34	875	0.0	8.35	2.3								

Well RMCCS STATE #1 RMCCS STATE #1			Field CRAIG, CO		Job Start Jan/19/2012	Customer SLUMBERGER CARBON SERVICES	Job Number 701234
Date	Time 24-hr clock	Treating Pressure PSI	Flow Rate B/M	Density LB/G	Volume BBL	Message	
01/20/2012	10:39:54	2643	0.0	8.35	2.3		
01/20/2012	10:41:34	-108	0.0	8.35	2.3		
01/20/2012	10:43:14	2	3.4	8.34	5.0		
01/20/2012	10:44:54	131	5.9	8.34	13.3		
01/20/2012	10:46:34	234	5.9	8.34	23.1		
01/20/2012	10:48:14	229	5.9	8.34	32.9		
01/20/2012	10:49:54	255	5.9	8.34	42.7		
01/20/2012	10:51:34	257	5.9	8.34	52.4		
01/20/2012	10:51:58	358	5.9	12.57	54.8	End Spacer	
01/20/2012	10:52:01	358	5.9	12.56	55.1	Start Cement Slurry	
01/20/2012	10:52:18	362	5.9	12.50	56.8	Start Mixing Lead Slurry	
01/20/2012	10:52:22	353	5.9	12.50	57.2	Reset Total, Vol = 62.26 bbl	
01/20/2012	10:52:23	353	5.9	12.50	57.3	Pump 575sks (216bbls) 12.5 Lead	
01/20/2012	10:52:24	359	5.9	12.50	57.4	Take Wet/ Dry Samples	
01/20/2012	10:52:25	356	5.9	12.50	57.5	Sample #'s 010750 010871	
01/20/2012	10:53:14	321	5.9	12.52	62.3		
01/20/2012	10:54:54	332	5.9	12.57	72.1		
01/20/2012	10:56:34	491	7.8	12.55	83.0		
01/20/2012	10:58:14	478	7.8	12.59	95.9		
01/20/2012	10:59:54	512	7.8	12.60	108.9		
01/20/2012	11:01:29	524	7.8	12.60	121.2	Pressure Scale = 12.6	
01/20/2012	11:01:34	527	7.8	12.60	121.9		
01/20/2012	11:03:14	519	7.8	12.56	134.8		
01/20/2012	11:04:54	534	7.8	12.53	147.8		
01/20/2012	11:06:34	518	7.8	12.54	160.8		
01/20/2012	11:08:14	553	7.8	12.55	173.7		
01/20/2012	11:09:54	542	7.8	12.52	186.7		
01/20/2012	11:11:34	520	7.8	12.53	199.6		
01/20/2012	11:13:14	494	7.8	12.52	212.6		
01/20/2012	11:14:54	528	7.8	12.55	225.6		
01/20/2012	11:16:34	496	7.8	12.35	238.7		
01/20/2012	11:18:14	177	0.0	-3.13	249.4		
01/20/2012	11:19:54	179	4.0	12.57	255.5		
01/20/2012	11:21:33	157	4.2	12.52	262.3	End Lead Slurry	
01/20/2012	11:21:34	157	4.1	12.52	262.4		
01/20/2012	11:21:36	199	4.1	12.54	262.5	Start Mixing Scav Slurry	
01/20/2012	11:21:41	194	4.1	12.54	262.9	Reset Total, Vol = 205.68 bbl	
01/20/2012	11:23:14	153	3.7	14.41	268.9		
01/20/2012	11:24:54	152	3.2	15.43	274.6		
01/20/2012	11:25:00	150	3.3	15.44	274.9	End Scavenger Slurry	
01/20/2012	11:25:01	150	3.3	15.46	275.0	Start Mixing Tail Slurry	
01/20/2012	11:26:34	206	3.6	16.09	280.5		
01/20/2012	11:28:14	449	5.9	15.89	287.5		
01/20/2012	11:29:54	425	5.9	15.86	297.2		
01/20/2012	11:31:34	435	5.8	15.72	307.0		
01/20/2012	11:31:48	449	5.8	15.76	308.3	Pump 538sks (112bbls) 15.8 Tail	
01/20/2012	11:31:49	449	5.8	15.76	308.4	Take Wet/Dry Samples	
01/20/2012	11:32:59	424	5.8	15.85	315.2	Good Returns	
01/20/2012	11:33:14	441	5.8	15.85	316.7		
01/20/2012	11:34:54	416	5.8	15.85	326.3		
01/20/2012	11:36:34	436	5.8	15.86	335.9		
01/20/2012	11:38:14	460	5.8	15.81	345.5		
01/20/2012	11:39:54	476	5.7	15.83	355.0		
01/20/2012	11:41:34	484	5.7	15.83	364.6		

Well RMCCS STATE #1 RMCCS STATE #1			Field CRAIG, CO		Job Start Jan/19/2012	Customer SLUMBERGER CARBON SERVICES	Job Number 701234
Date	Time 24-hr clock	Treating Pressure PSI	Flow Rate B/M	Density LB/G	Volume BBL	Message	
01/20/2012	11:44:00	377	5.9	15.83	378.7	End Tail Slurry	
01/20/2012	11:44:01	377	5.9	15.83	378.8	End Cement Slurry	
01/20/2012	11:44:02	377	5.9	15.83	378.9	Start Displacement	
01/20/2012	11:44:54	-104	0.0	15.96	381.7		
01/20/2012	11:46:34	-8	0.0	16.00	381.7		
01/20/2012	11:48:14	3	0.0	12.83	381.7		
01/20/2012	11:49:54	22	0.0	10.38	381.7		
01/20/2012	11:51:34	225	5.1	9.21	386.8		
01/20/2012	11:53:14	290	6.3	8.63	397.0		
01/20/2012	11:54:54	389	7.8	8.45	408.3		
01/20/2012	11:56:34	375	7.8	8.39	421.3		
01/20/2012	11:58:14	250	7.7	8.37	434.2		
01/20/2012	11:59:54	242	7.7	8.36	447.1		
01/20/2012	12:01:34	241	7.7	8.36	460.0		
01/20/2012	12:02:34	258	7.7	8.36	467.7	Displace 198bbbls of Water	
01/20/2012	12:03:14	251	7.7	8.36	472.9		
01/20/2012	12:04:48	267	7.7	8.35	484.9	Reset Total, Vol = 222.07 bbl	
01/20/2012	12:04:54	249	7.7	8.36	485.7		
01/20/2012	12:06:34	267	7.7	8.36	498.6		
01/20/2012	12:08:14	232	7.9	8.36	511.6		
01/20/2012	12:09:54	293	7.9	8.36	524.6		
01/20/2012	12:11:05	384	6.3	8.37	532.9	Lost Returns @ 100 bbbls Away	
01/20/2012	12:11:34	324	6.2	8.35	536.0		
01/20/2012	12:13:14	356	6.2	8.36	546.3		
01/20/2012	12:14:54	360	6.2	8.36	556.5		
01/20/2012	12:16:34	340	4.3	8.36	566.5		
01/20/2012	12:18:14	347	4.3	8.36	573.7		
01/20/2012	12:19:54	283	2.8	8.36	579.7		
01/20/2012	12:21:34	276	2.7	8.36	584.2		
01/20/2012	12:22:19	845	0.0	8.36	585.7	Bump Top Plug	
01/20/2012	12:22:21	845	0.0	8.36	585.7	End Displacement	
01/20/2012	12:23:14	843	0.0	8.36	585.7		
01/20/2012	12:23:25	843	0.0	8.36	585.7	Hold For 15 Min.	
01/20/2012	12:24:54	842	0.0	8.36	585.7		
01/20/2012	12:26:34	841	0.0	8.37	585.7		
01/20/2012	12:28:14	840	0.0	8.37	585.7		
01/20/2012	12:29:54	839	0.0	8.37	585.7		
01/20/2012	12:31:34	839	0.0	8.37	585.7		
01/20/2012	12:33:14	838	0.0	8.37	585.7		
01/20/2012	12:34:54	839	0.0	8.37	585.7		
01/20/2012	12:36:34	842	0.0	8.37	585.7		
01/20/2012	12:38:14	807	0.0	8.37	585.7		
01/20/2012	12:39:54	-109	0.0	8.37	585.7		
01/20/2012	12:40:51	-109	0.0	8.37	585.7	1bbl Back	
01/20/2012	12:40:53	-109	0.0	8.37	585.7	Floats Held	
01/20/2012	12:41:34	-109	0.0	8.37	585.7		
01/20/2012	12:43:14	-109	0.0	8.37	585.7		
01/20/2012	12:44:54	-109	0.0	8.37	585.7		
01/20/2012	12:46:34	-110	0.0	8.37	585.7		
01/20/2012	12:48:14	-110	0.0	8.37	585.7		
01/20/2012	12:49:54	-109	0.0	8.37	585.7		
01/20/2012	12:51:34	-110	0.0	8.37	585.7		
01/20/2012	12:53:14	-110	0.0	8.37	585.7		
01/20/2012	12:54:54	-89	0.0	8.37	585.7		

Well RMCCS STATE #1 RMCCS STATE #1			Field CRAIG, CO		Job Start Jan/19/2012	Customer SLUMBERGER CARBON SERVICES	Job Number 701234
Date	Time 24-hr clock	Treating Pressure PSI	Flow Rate B/M	Density LB/G	Volume BBL	Message	
01/20/2012	12:58:14	3	0.0	8.36	585.7		
01/20/2012	12:59:54	5	0.0	8.36	585.7		
01/20/2012	18:42:51	-113	0.0	8.35	588.8	Reset Total, Vol = 100.76 bbl	
01/20/2012	18:42:53	-113	0.0	8.35	588.8	Top out with 15.8 Tail Yield of 1.16	
01/20/2012	18:42:54	-113	0.0	8.35	588.8	Pump 180sks 38bbls Cement	
01/20/2012	18:43:14	-113	0.0	8.35	588.8		
01/20/2012	18:44:54	-105	0.5	8.36	589.1		
01/20/2012	18:46:34	-32	2.2	8.26	589.5		
01/20/2012	18:48:14	-111	0.0	8.35	592.2		
01/20/2012	18:49:54	-51	2.1	8.45	593.4		
01/20/2012	18:51:34	-107	0.0	8.45	596.4		
01/20/2012	18:53:14	-112	0.0	8.45	596.4		
01/20/2012	18:54:54	-39	1.5	8.39	597.0		
01/20/2012	18:56:34	-92	0.9	8.20	601.1		
01/20/2012	18:58:14	-23	2.6	8.45	604.2		
01/20/2012	18:59:54	-112	0.0	8.36	605.4		
01/20/2012	19:01:34	-112	0.0	8.36	605.4		
01/20/2012	19:03:14	-112	0.0	8.36	605.4		
01/20/2012	19:04:54	-112	0.0	8.36	605.4		
01/20/2012	19:06:34	-112	0.0	8.36	605.4		
01/20/2012	19:08:14	-112	0.0	8.36	605.4		
01/20/2012	19:09:54	-112	0.0	8.36	605.4		
01/20/2012	19:11:34	-111	0.0	8.36	605.4		
01/20/2012	19:13:14	-112	0.0	8.36	605.4		
01/20/2012	19:14:54	-112	0.0	8.35	605.4		
01/20/2012	19:16:34	-112	0.0	8.35	605.4		
01/20/2012	19:18:14	-112	0.0	8.35	605.4		
01/20/2012	19:19:54	-112	0.0	8.35	605.4		
01/20/2012	19:21:34	-27	0.0	8.36	605.4		
01/20/2012	19:23:14	-20	0.0	8.36	605.4		
01/20/2012	19:24:54	-25	0.0	8.36	605.4		
01/20/2012	19:26:34	-19	0.0	8.37	605.4		
01/20/2012	19:28:14	-12	0.0	15.56	605.5		
01/20/2012	19:29:54	88	0.9	15.70	606.7		
01/20/2012	19:31:34	208	1.3	15.76	608.6		
01/20/2012	19:33:14	177	1.2	15.70	610.4		
01/20/2012	19:34:54	202	1.2	15.69	612.5		
01/20/2012	19:36:34	208	1.2	15.83	614.5		
01/20/2012	19:38:14	211	1.2	15.82	616.5		
01/20/2012	19:39:54	183	1.2	15.87	618.5		
01/20/2012	19:41:34	184	1.2	15.88	620.5		
01/20/2012	19:43:14	191	1.2	15.88	622.5		
01/20/2012	19:44:54	186	1.2	15.86	624.6		
01/20/2012	19:46:34	-21	0.0	15.88	625.5		
01/20/2012	19:48:14	-5	0.0	15.88	625.5		
01/20/2012	19:49:54	-5	0.0	15.91	625.5		
01/20/2012	19:51:34	3	0.2	15.91	625.5		
01/20/2012	19:53:14	216	1.3	15.91	627.4		
01/20/2012	19:54:54	118	1.2	15.79	629.4		
01/20/2012	19:56:34	207	1.2	15.91	631.5		
01/20/2012	19:58:14	191	1.2	15.91	633.5		
01/20/2012	19:59:54	98	1.2	15.90	635.6		
01/20/2012	20:01:34	95	1.2	15.90	637.6		
01/20/2012	20:03:14	-108	0.0	15.91	639.0		

Well RMCCS STATE #1 RMCCS STATE #1			Field CRAIG, CO		Job Start Jan/19/2012	Customer SLUMBERGER CARBON SERVICES	Job Number 701234
Date	Time 24-hr clock	Treating Pressure PSI	Flow Rate B/M	Density LB/G	Volume BBL	Message	
01/20/2012	20:06:34	-22	0.0	15.94	639.0		
01/20/2012	20:08:14	-9	0.0	15.89	639.0		
01/20/2012	20:09:54	-47	0.0	15.55	639.0		
01/20/2012	20:11:34	-41	0.0	14.56	639.0		
01/20/2012	20:13:14	-39	0.0	13.31	639.0		
01/20/2012	20:14:54	-40	0.0	13.05	639.0		
01/20/2012	20:16:34	39	1.5	11.02	639.1		
01/20/2012	20:18:14	84	4.7	9.66	644.0		
01/20/2012	20:19:54	38	4.3	5.20	651.8		
01/20/2012	20:21:34	93	4.1	8.34	654.0		
01/20/2012	20:23:14	59	0.0	-3.13	655.3		

Post Job Summary

Average Pump Rates, bbl/min					Volume of Fluid Injected, bbl			
Slurry 4.6	N2	Mud	Maximum Rate 8.3		Total Slurry 657.7	Mud 0.0	Spacer 59.8	N2
Treating Pressure Summary, psi					Breakdown Fluid			
Maximum 3033	Final 79	Average 417	Bump Plug to 900	Breakdown	Type		Volume bbl	Density lb/gal
Avg. N2 Percent %		Designed Slurry Volume 328.0 bbl		Displacement 124.2 bbl	Mix Water Temp 55 degF	Cement Circulated to Surface? <input type="checkbox"/>		Volume bbl
						Washed Thru Perfs <input type="checkbox"/>		To ft
Customer or Authorized Representative ARCHIE FULLER				Schlumberger Supervisor DANT RYAN/TED HANSEN			Circulation Lost <input type="checkbox"/>	Job Completed <input type="checkbox"/>
							-	-