

ENCANA OIL & GAS (USA) INC. - EBUS
DO NOT MAIL-3601 N STAGECOACH RD
LONGMONT, Colorado

davis
Davis 2A-9H

Ensign/135

Post Job Summary

Plug to Abandon Service

Date Prepared: 05/03/2012
Version: 1

Service Supervisor: WHEELER, JUSTIN

Submitted by: MCKAY, ADAM

HALLIBURTON

Wellbore Geometry

Job Tubulars					MD		TVD		Excess	Shoe Joint Length
Type	Description	Size in	ID in	Wt lbm/ft	Top ft	Bottom ft	Top ft	Bottom ft	%	ft
Casing	9 5/8" Surface Casing	9.63	8.835	40.00	0.00	311.00	0.00	0.00	60.00	0.00
Open Hole Section	Open Hole		12.250		0.00	311.00	0.00	0.00	0.00	0.00

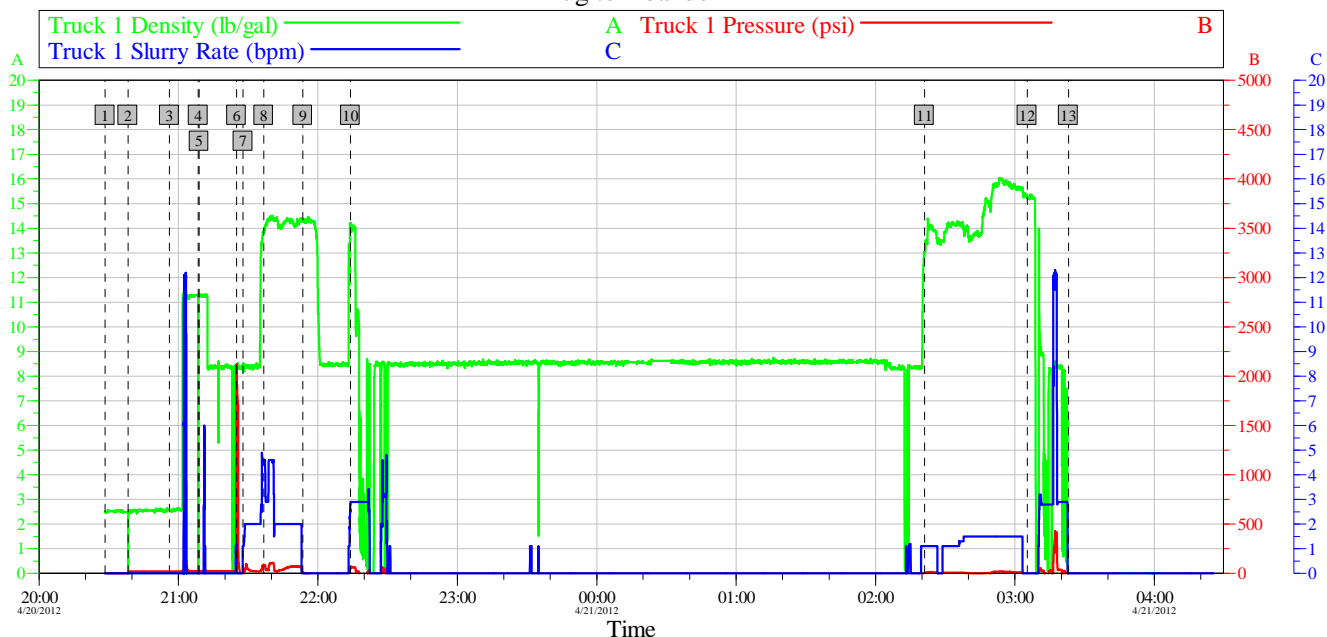
Pumping Schedule

Stage /Plug #	Fluid #	Fluid Type	Fluid Name	Surface Density lbm/gal	Avg Rate bbl/min	Surface Volume	Downhole Volume
1	1	Spacer	Fresh Water	8.34	2.00	10.0 bbl	10.0 bbl
1	2	Cement Slurry	SWIFTCEM 14.2#	14.20	2.00	250.0 sacks	250.0 sacks
1	3	Cement Slurry	Prem G 15.8#	15.80	2.00	100.0 sacks	100.0 sacks

Data Acquisition

Encana - Davis - 2A-9H

Plug to Abandon



Global Event Log									
Intersection			TIP	TISR	Intersection			TIP	TISR
1	Starting Job	4/20/2012 20:28:27	0.000	0.000	2	Start Job	4/20/2012 20:38:17	0.355	0.000
3	Start Job	4/20/2012 20:56:08	20.00	0.000	4	Start Job	4/20/2012 21:08:32	3.125	0.000
5	Start Job	4/20/2012 21:08:51	18.95	0.000	6	Test Lines	4/20/2012 21:24:59	2118	0.248
7	Pump Fresh Water	4/20/2012 21:27:49	10.000	1.100	8	Pump Cement	4/20/2012 21:36:40	87.71	4.600
9	Shutdown	4/20/2012 21:53:31	5.801	0.000	10	Clean Lines	4/20/2012 22:14:02	59.71	2.900
11	Pump Cement, Top Out Well	4/21/2012 02:21:03	6.000	1.100	12	Shutdown	4/21/2012 03:05:15	-9.000	0.000
13	Clean Lines	4/21/2012 03:23:02	-8.000	0.000					

Customer: Encana
Well Description: Davis - 2A-9H

Job Date: 20-Apr-2012
UWI:

Sales Order #: 9453980

OptiCem v6.4.9
21-Apr-12 04:25

Service Supervisor Reports

Job Log

Date/Time	Chart #	Activity Code	Pump Rate	Cum Vol	Pump		Pressure (psig)	Comments
04/20/2012 18:00		Depart from Service Center or Other Site						Journey Management Meeting With Crew
04/20/2012 19:00		Arrive At Loc						Drill Pipe Set @ 311'
04/20/2012 19:30		Safety Meeting - Pre Rig-Up						Water Provided By Rig, Tested Ok for Mixing Cement
04/20/2012 21:24		Test Lines						Pressure Test Lines to 2000 PSI
04/20/2012 21:27		Pump Spacer	1	10			.0	Pump Fresh Water Spacer
04/20/2012 21:36		Pump Cement	4	57			85.0	Mix and Pump 215 sks SwiftCem Cement @ 14.2 lb/gal (Density Verified By Pressurized Scales) Add 100 Lbs Poly Flake on the Fly
04/20/2012 21:53		Shutdown						Shut-Down, Cement Returns to Surface
04/20/2012 22:05		Other						Rig POOH W/ Drill Pipe
04/20/2012 22:05		Other						Wait for Cement Fallback, As Per Customer Rep.
04/20/2012 22:14		Clean Lines						Wash-up to Pit
04/21/2012 01:50		Other						Rig RIH W/ 1 JT of Drill Pipe
04/21/2012 02:21		Pump Cement	1	9.3			10.0	Mix and Pump 35 sks SwiftCem Cement @ 14.2 lb/gal, Top Out Well
04/21/2012 02:51		Pump Cement	1	20.5			15.0	Mix and Pump 100 sks Class G Cement, Top Out Well
04/21/2012 03:05		Shutdown						
04/21/2012 03:06		Other						Wait for Cement Fallback As Per Customer Rep.
04/21/2012 04:05		Other						Cement 1' From Ground Level, Customer Rep. Releases HES From Location
04/21/2012 04:30		Safety Meeting - Pre Rig-Down						Wet And Dry Samples of Cement Left on Location
04/21/2012 05:00		Safety Meeting - Departing Location						Journey Management Meeting With Crew

HALLIBURTON

The Road to Excellence Starts with Safety

Sold To #: 340078		Ship To #: 2922354		Quote #:		Sales Order #: 9453980	
Customer: ENCANA OIL & GAS (USA) INC. - EBUS				Customer Rep: Ewing, Chris			
Well Name: Davis			Well #: 2A-9H			API/UWI #: 05-123-34752	
Field: Wattenberg		City (SAP): FORT LUPTON		County/Parish: Weld		State: Colorado	
Contractor: Ensign			Rig/Platform Name/Num: 135				
Job Purpose: Plug to Abandon Service							
Well Type: Development Well			Job Type: Plug to Abandon Service				
Sales Person: FLING, MATTHEW			Srvc Supervisor: WHEELER, JUSTIN			MBU ID Emp #: 196470	

Job Personnel

HES Emp Name	Exp Hrs	Emp #	HES Emp Name	Exp Hrs	Emp #	HES Emp Name	Exp Hrs	Emp #
BANUELOS, GUADALUPE	0.0	372277	JEWELL, WILLIAM Uris	0.0	503358	SANSONI, NICHOLAS Sterling J	0.0	502962
SMITH, AARON David	0.0	518187	WHEELER, JUSTIN W	0.0	196470			

Equipment

HES Unit #	Distance-1 way	HES Unit #	Distance-1 way	HES Unit #	Distance-1 way	HES Unit #	Distance-1 way
10988836	14 mile	11064535	14 mile	11341988C	14 mile	11527037	14 mile
11605599	14 mile						

Job Hours

Date	On Location Hours	Operating Hours	Date	On Location Hours	Operating Hours	Date	On Location Hours	Operating Hours
TOTAL			<i>Total is the sum of each column separately</i>					

Job

Job Times

Formation Name							Date	Time	Time Zone
Formation Depth (MD)	Top			Bottom		Called Out	20 - Apr - 2012	16:00	MST
Form Type			BHST			On Location	20 - Apr - 2012	19:00	MST
Job depth MD	311. ft		Job Depth TVD		311. ft	Job Started	20 - Apr - 2012	21:23	MST
Water Depth			Wk Ht Above Floor			Job Completed	21 - Apr - 2012	04:05	MST
Perforation Depth (MD)	From			To		Departed Loc	21 - Apr - 2012	05:00	MST

Well Data

Description	New / Used	Max pressure psig	Size in	ID in	Weight lbm/ft	Thread	Grade	Top MD ft	Bottom MD ft	Top TVD ft	Bottom TVD ft
Open Hole				12.25				.	311.	.	.
9 5/8" Surface Casing	New		9.625	8.835	40.		N-80	.	311.	.	.

Tools and Accessories

Type	Size	Qty	Make	Depth	Type	Size	Qty	Make	Depth	Type	Size	Qty	Make
Guide Shoe					Packer					Top Plug			
Float Shoe					Bridge Plug					Bottom Plug			
Float Collar					Retainer					SSR plug set			
Insert Float										Plug Container			
Stage Tool										Centralizers			

Miscellaneous Materials

Gelling Agt	Conc	Surfactant	Conc	Acid Type	Qty	Conc	%
Treatment Fld	Conc	Inhibitor	Conc	Sand Type	Size	Qty	

Fluid Data

HALLIBURTON

Stage/Plug #: 1										
Fluid #	Stage Type	Fluid Name	Qty	Qty uom	Mixing Density lbm/gal	Yield ft ³ /sk	Mix Fluid Gal/sk	Rate bbl/min	Total Mix Fluid Gal/sk	
1	Fresh Water		10.00	bbl	8.34	.0	.0	.0		
2	SWIFTCEM 14.2#	SWIFTCEM (TM) SYSTEM (452990)	250.0	sacks	14.2	1.49	7.43		7.43	
7.43 Gal		FRESH WATER								
3	Prem G 15.8#	CMT - PREMIUM - CLASS G, 94 LB SK (100003685)	100.0	sacks	15.8	1.15	5.0		5.0	
94 lbm		CMT - PREMIUM - CLASS G REG OR TYPE V, BULK (100003685)								
5 Gal		FRESH WATER								
Calculated Values		Pressures		Volumes						
Displacement		Shut In: Instant		Lost Returns		Cement Slurry		Pad		
Top Of Cement		5 Min		Cement Returns		Actual Displacement		Treatment		
Frac Gradient		15 Min		Spacers		Load and Breakdown		Total Job		
Rates										
Circulating		Mixing		Displacement		Avg. Job				
Cement Left In Pipe	Amount	0 ft	Reason	Shoe Joint						
Frac Ring # 1 @	ID	Frac ring # 2 @	ID	Frac Ring # 3 @	ID	Frac Ring # 4 @	ID			
The Information Stated Herein Is Correct				Customer Representative Signature						