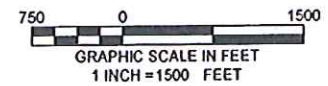
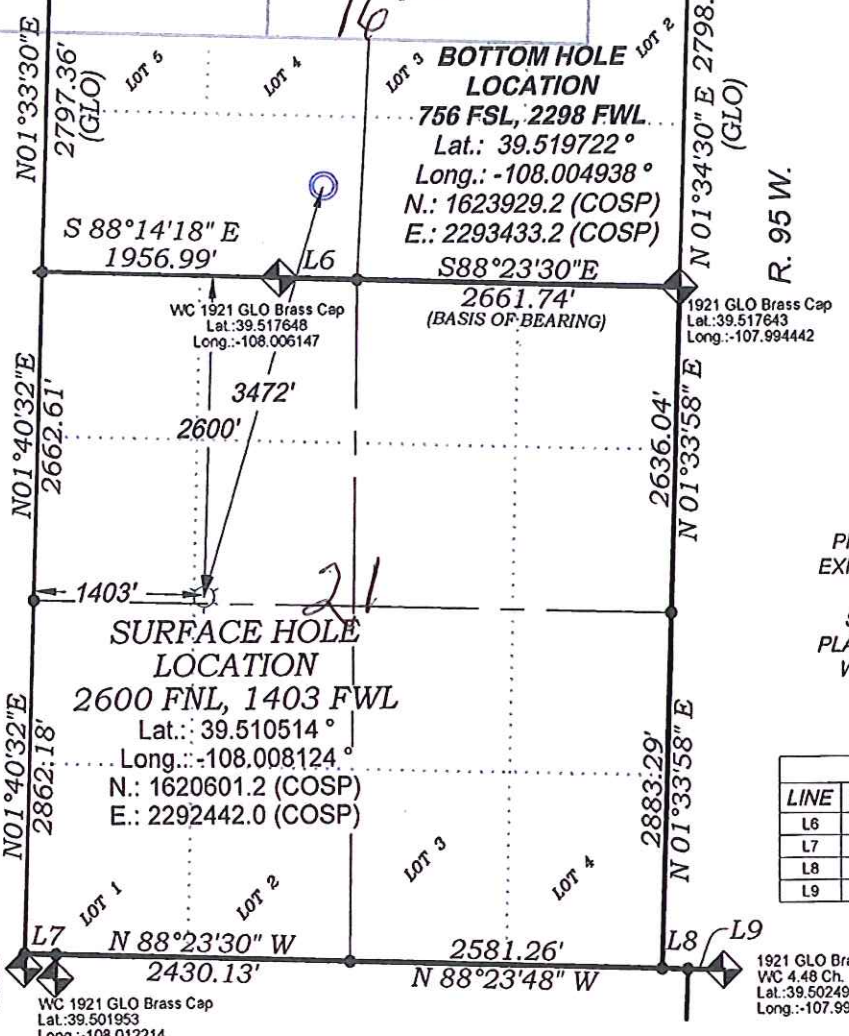


Federal PA 424-16

T. 6 S.

La Paz
#8 Placer

La Paz
#7 Placer



PROPOSED PAD ELEV.: 6030.0
EXISTING GROUND ELEV.: 6030.0

SEE CONSTRUCTION LAYOUT
PLAT FOR VISIBLE IMPROVEMENTS
WITHIN 400' OF THIS LOCATION

LINE TABLE		
LINE	LENGTH	BEARING
L6	640.20	N88°23'30"W
L7	258.09	N88°20'47"W
L8	212.52	S88°21'17"E
L9	295.68	S88°27'43"E

- LEGEND -

- FIELD LOCATED SECTION MONUMENTS AS DESCRIBED
- FIELD SURVEYED WELL LOCATION
- CALCULATED BOTTOM HOLE LOCATION
- CALCULATED SECTION CORNER LOCATION

SURVEYORS STATEMENT

I, MICHAEL J. LANGHORNE, A REGISTERED LAND SURVEYOR IN THE STATE OF COLORADO DO HEREBY CERTIFY THAT THE SURVEY SHOWN HEREON WAS PREPARED UNDER MY DIRECT SUPERVISION AND HAS BEEN STAKED ON THE GROUND AS SHOWN ON THE PLAT AND CHECKING THAT THIS MAP IS A TRUE REPRESENTATION THEREOF.

Michael J. Langhorne

MICHAEL J. LANGHORNE, COLORADO REGISTRATION NO. 36572
FOR AND ON BEHALF OF
BOOKCLIFF SURVEY SERVICES, INC.

REFERENCES

- 1) Resurvey of a Portion and Extension Survey of T. 6 S., R. 95 W., 6 th P.M (GLO PLAT)
- 2) Supplemental Plat of T. 6 S., R. 95 W., 6 th P.M (GLO PLAT)
- 2) U.S.G.S. QUAD: FORKED GULCH, CO and ANVIL POINTS, CO

REVISED: 2/12/13

SURVEY DATE: 12/11/12
MAP DATE: 12/17/12
SCALE: 1" = 1500'
PLAT: 1 of 1
PROJECT: Valley

NOTES

- 1) ELEVATIONS BASED ON N.A.V.D. 1988 PUBLISHED COORDINATES.
- 2) LATITUDES AND LONGITUDES ARE BASE ON NAD 83, PUBLISHED COORDINATES
- 3) STATE PLANE COORDINATES ARE BASED ON COLORADO CENTRAL ZONE, U.S. SURVEY FEET.
- 4) ELEVATION MASK SET TO 15"
- 5) GPS OPERATOR J. KIRKPATRICK, OBSERVED A PDOP4.9 ON SURVEY POINT NUMBER 290.
- 6) SURFACE AND BOTTOM HOLE LOCATIONS ARE MEASURED 90° FROM SECTION LINES.

WELL LOCATION PLAT Prepared for:
WPXENERGY. WPX Energy Rocky Mountain, LLC

SE1/4 NW1/4, SECTION 21
T. 6 S., R. 95 W. of the 6th. P.M.
GARFIELD COUNTY, COLORADO

136 East Third Street
Rifle, Colorado
81650 Ph. (970)
625-2720 Fax (970)
625-2773

BOOKCLIFF
Survey Services, Inc.