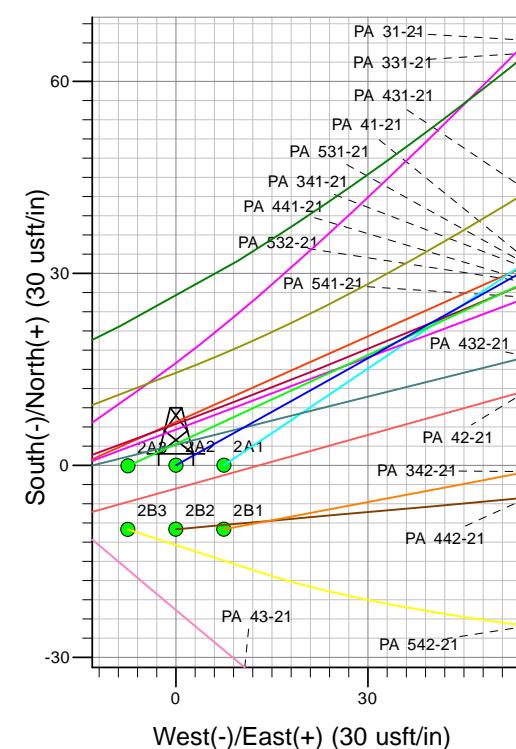
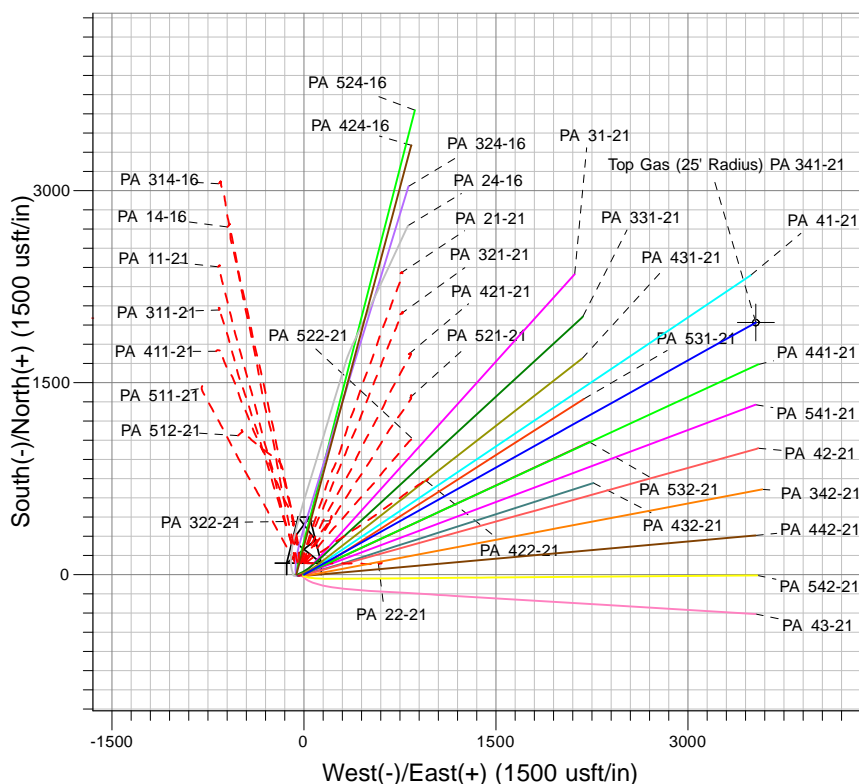
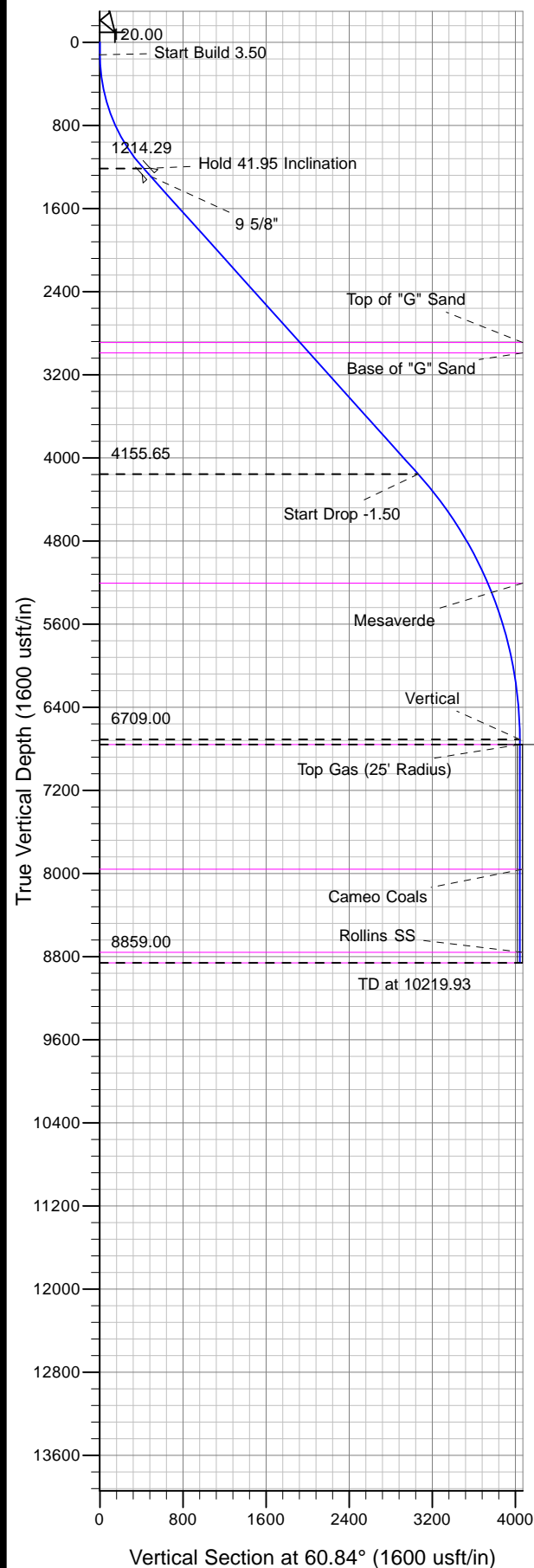




Well Name: PA 341-21  
Surface Location: PA 22-21 Pad  
North American Datum 1983 , US State Plane 1983, Colorado Central Zone  
Ground Elevation: 6030.00  
+N/-S 0.00 +E/-W 0.00 Northing 1620599.40 Easting 2292502.00 Latitude 39.51051 Longitude -108.00791 Slot 2A2  
KELLY BUSHING @ 6056.00usft (Nabors 26')



Project: PA 21-06S-095W  
Site: PA 22-21 Pad  
Well: PA 341-21  
Design #2 07Nov12 kjs

Azimuths to True North  
Magnetic North: 10.23°  
Magnetic Field  
Strength: 52157.4snT  
Dip Angle: 65.72°  
Date: 6/6/2012  
Model: IGRF2010

#### ANNOTATIONS

MD	Inc	Azi	TVD	+N/-S	+E/-W	Vsect	Departure	Annotation
120.00	0.00	0.00	120.00	0.00	0.00	0.00	0.00	Start Build 3.50
1318.54	41.95	60.84	1214.29	204.39	366.34	419.50	419.50	Hold 41.95 Inclination
5273.34	41.95	60.84	4155.65	1492.45	2674.98	3063.15	3063.15	Start Drop -1.50
8069.93	0.00	0.00	6709.00	1969.36	3529.77	4041.98	4041.98	Vertical
8119.93	0.00	0.00	6759.00	1969.36	3529.77	4041.98	4041.98	Top Gas
10219.93	0.00	0.00	8859.00	1969.36	3529.77	4041.98	4041.98	TD at 10219.93