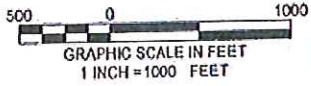
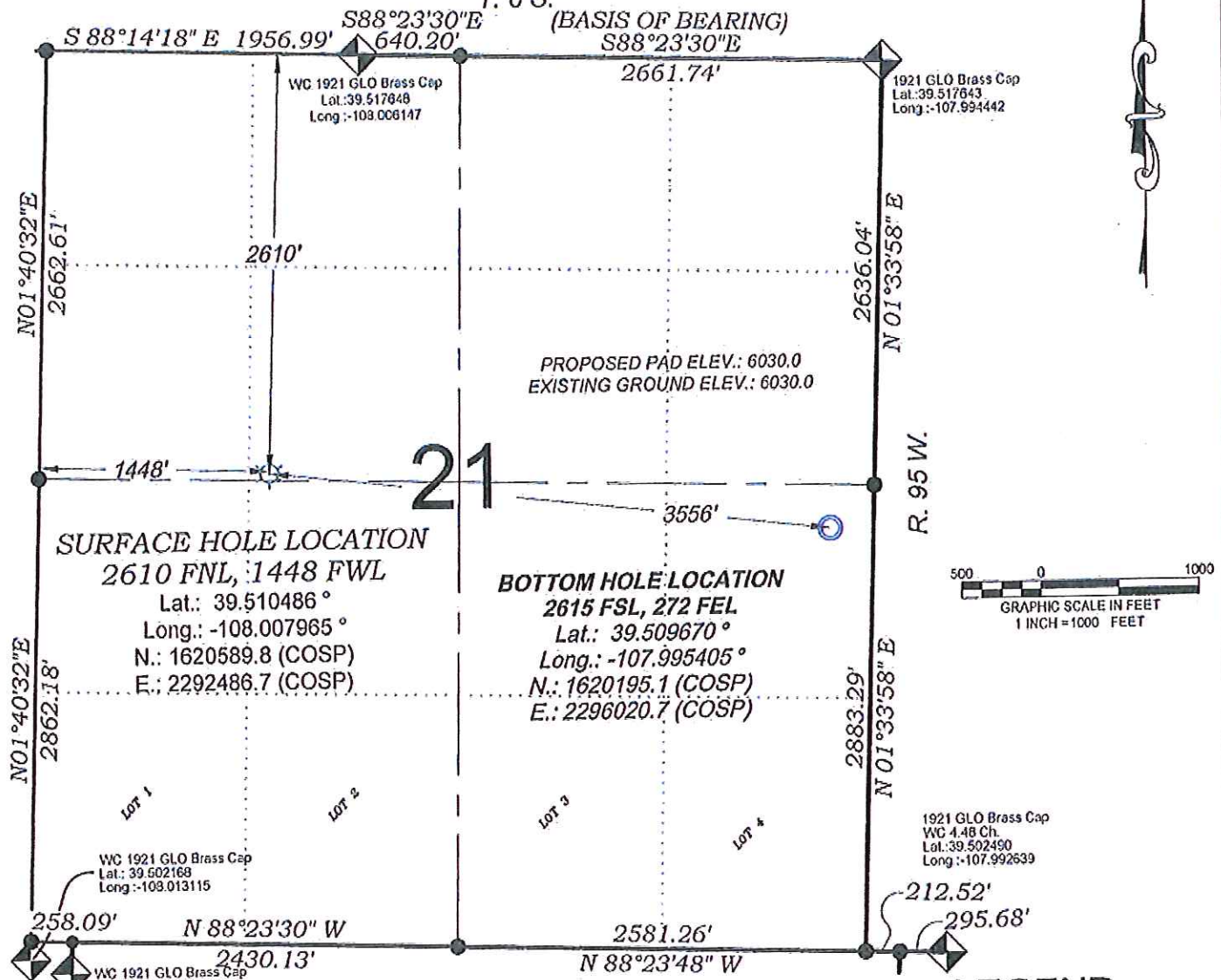


Federal PA 43-21

T. 6 S.

(BASIS OF BEARING)



- LEGEND -

- FIELD LOCATED SECTION MONUMENTS AS DESCRIBED
- FIELD SURVEYED WELL LOCATION
- CALCULATED BOTTOM HOLE LOCATION
- CALCULATED SECTION CORNER LOCATION

SEE CONSTRUCTION LAYOUT PLAT FOR VISIBLE IMPROVEMENTS WITHIN 400' OF THIS LOCATION

SURVEYORS STATEMENT

I, MICHAEL J. LANGHORNE, A REGISTERED LAND SURVEYOR IN THE STATE OF COLORADO DO HEREBY CERTIFY THAT THE SURVEY SHOWN HEREON WAS PREPARED UNDER MY DIRECT SUPERVISION AND HAS BEEN STAKED ON THE GROUND AS SHOWN ON THE PLAT AND CHECKING THAT THIS MAP IS A TRUE REPRESENTATION THEREOF.

*Michael Langhorne*

MICHAEL J. LANGHORNE, COLORADO REGISTRATION NO. 36572  
FOR AND ON BEHALF OF  
BOOKCLIFF SURVEY SERVICES, INC.

REFERENCES

- 1) Resurvey of a Portion and Extension Survey of T. 6 S., R. 95 W., 6 th P.M (GLO PLAT)
- 2) Supplemental Plat of T. 6 S., R. 95 W., 6 th P.M (GLO PLAT)
- 2) U.S.G.S. QUAD: FORKED GULCH, CO and ANVIL POINTS, CO

NOTES

- 1) ELEVATIONS BASED ON N.A.V.D. 1988 PUBLISHED COORDINATES.
- 2) LATITUDES AND LONGITUDES ARE BASED ON NAD 83, PUBLISHED COORDINATES
- 3) STATE PLANE COORDINATES ARE BASED ON COLORADO CENTRAL ZONE, U.S. SURVEY FEET.
- 4) ELEVATION MASK SET TO 15'
- 5) GPS OPERATOR J. KIRKPATRICK, OBSERVED A PDOP 4.9 ON SURVEY POINT NUMBER 290.
- 6) SURFACE AND BOTTOM HOLE LOCATIONS ARE MEASURED 90° FROM SECTION LINES.

136 East Third Street  
Rife, Colorado  
81650 Ph. (970)  
625-2720 Fax (970)  
625-2773

**BOOKCLIFF**  
Survey Services, Inc.

SURVEY DATE: 12/11/12  
MAP DATE: 12/17/12  
SCALE: 1" = 1000'  
PLAT: 1 of 1  
PROJECT: Valley

**WELL LOCATION PLAT Prepared for:**  
**WPXENERGY.** WPX Energy Rocky Mountain, LLC

SE1/4 NW1/4, SECTION 21  
T. 6 S., R. 95 W. of the 6th P.M.  
GARFIELD COUNTY, COLORADO

435212 VILLIERS VALLEY, PA 43-21, 25-27, 28-30, 31-32, 33-34, 35-36, 37-40, 41-42, 43-44, 45-48, 49-52, 53-56, 57-60, 61-64, 65-68, 69-72, 73-76, 77-80, 81-84, 85-88, 89-92, 93-96, 97-100, 101-104, 105-108, 109-112, 113-116, 117-120, 121-124, 125-128, 129-132, 133-136, 137-140, 141-144, 145-148, 149-152, 153-156, 157-160, 161-164, 165-168, 169-172, 173-176, 177-180, 181-184, 185-188, 189-192, 193-196, 197-200, 201-204, 205-208, 209-212, 213-216, 217-220, 221-224, 225-228, 229-232, 233-236, 237-240, 241-244, 245-248, 249-252, 253-256, 257-260, 261-264, 265-268, 269-272, 273-276, 277-280, 281-284, 285-288, 289-292, 293-296, 297-300, 301-304, 305-308, 309-312, 313-316, 317-320, 321-324, 325-328, 329-332, 333-336, 337-340, 341-344, 345-348, 349-352, 353-356, 357-360, 361-364, 365-368, 369-372, 373-376, 377-380, 381-384, 385-388, 389-392, 393-396, 397-400, 401-404, 405-408, 409-412, 413-416, 417-420, 421-424, 425-428, 429-432, 433-436, 437-440, 441-444, 445-448, 449-452, 453-456, 457-460, 461-464, 465-468, 469-472, 473-476, 477-480, 481-484, 485-488, 489-492, 493-496, 497-500, 501-504, 505-508, 509-512, 513-516, 517-520, 521-524, 525-528, 529-532, 533-536, 537-540, 541-544, 545-548, 549-552, 553-556, 557-560, 561-564, 565-568, 569-572, 573-576, 577-580, 581-584, 585-588, 589-592, 593-596, 597-600, 601-604, 605-608, 609-612, 613-616, 617-620, 621-624, 625-628, 629-632, 633-636, 637-640, 641-644, 645-648, 649-652, 653-656, 657-660, 661-664, 665-668, 669-672, 673-676, 677-680, 681-684, 685-688, 689-692, 693-696, 697-700, 701-704, 705-708, 709-712, 713-716, 717-720, 721-724, 725-728, 729-732, 733-736, 737-740, 741-744, 745-748, 749-752, 753-756, 757-760, 761-764, 765-768, 769-772, 773-776, 777-780, 781-784, 785-788, 789-792, 793-796, 797-800, 801-804, 805-808, 809-812, 813-816, 817-820, 821-824, 825-828, 829-832, 833-836, 837-840, 841-844, 845-848, 849-852, 853-856, 857-860, 861-864, 865-868, 869-872, 873-876, 877-880, 881-884, 885-888, 889-892, 893-896, 897-900, 901-904, 905-908, 909-912, 913-916, 917-920, 921-924, 925-928, 929-932, 933-936, 937-940, 941-944, 945-948, 949-952, 953-956, 957-960, 961-964, 965-968, 969-972, 973-976, 977-980, 981-984, 985-988, 989-992, 993-996, 997-1000