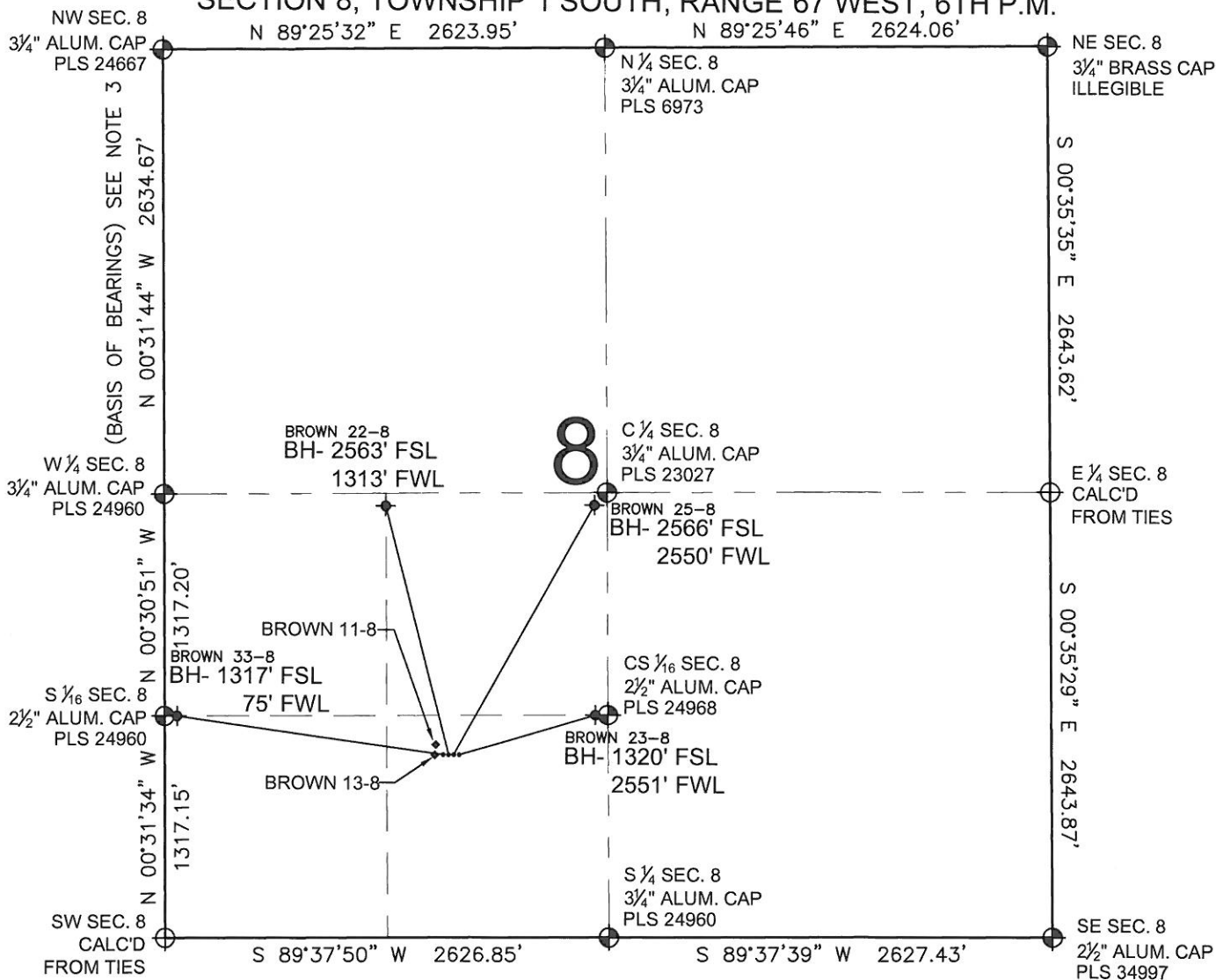


BROWN 13-8 MULTI-WELL PLAN

SECTION 8, TOWNSHIP 1 SOUTH, RANGE 67 WEST, 6TH P.M.



LEGEND

- ⊕ = EXISTING MONUMENT
- = PROPOSED WELL
- ◆ = EXISTING WELL
- BH= BOTTOM HOLE

NOTES:

- THIS FIELD SURVEY CONFORMS TO THE MINIMUM STANDARDS SET BY THE C.O.G.C.C., RULE NO. 215
- HORIZONTAL POSITIONS AND ORTHOMETRIC ELEVATIONS SHOWN AT THE WELL HEAD, ARE BASED ON GPS-RTK POSITIONS DERIVED FROM MINIMUM 2-HOUR STATIC OBSERVATIONS CORRECTED BY THE NATIONAL GEODETIC SURVEY ONLINE POSITIONING USER SERVICE, O.P.U.S. DATUM: HORIZONTAL = NAD83/2007, VERTICAL = NAVD88
- THE BASIS OF BEARINGS ARE STATE PLANE COORDINATE SYSTEM GRID BEARINGS SHOWN HEREON BETWEEN THE DESCRIBED MONUMENTS SHOWN HEREON.
- GRID DISTANCES ARE SHOWN, AS MEASURED IN THE FIELD, WITH TIES TO WELLS MEASURED PERPENDICULAR TO SECTION LINES.

NOTES:

- BROWN 33-8 TO BE AT 1085' FSL, 1665' FWL.
- BOTTOM HOLE AT 1317' FSL & 75' FWL.
- BROWN 22-8 TO BE AT 1085' FSL, 1680' FWL.
- BOTTOM HOLE AT 2563' FSL & 1313' FWL.
- BROWN 25-8 TO BE AT 1085' FSL, 1695' FWL.
- BOTTOM HOLE AT 2566' FSL & 2550' FWL.
- BROWN 23-8 TO BE AT 1085' FSL, 1710' FWL.
- BOTTOM HOLE AT 1320' FSL & 2551' FWL.
- BROWN 13-8 IS 1085' FSL, 1650' FWL.
- BROWN 11-8 IS 1103' FSL, 1653' FWL.

PREPARED BY:

PFS  llc
Petroleum Field Services, LLC
1801 W. 13th Ave.
Denver, CO 80204

BAYSWATER EXPLORATION & PRODUCTION, LLC

FIELD DATE: 12-13-12	PAD NAME: BROWN 13-8, LOCATION ID 427862
DRAWING DATE: 01-10-13	SURFACE LOCATION: SE 1/4 SW 1/4, SEC. 8, T1S, R67W
BY: SMF	CHECK: TJN
ADAMS COUNTY, COLORADO	

