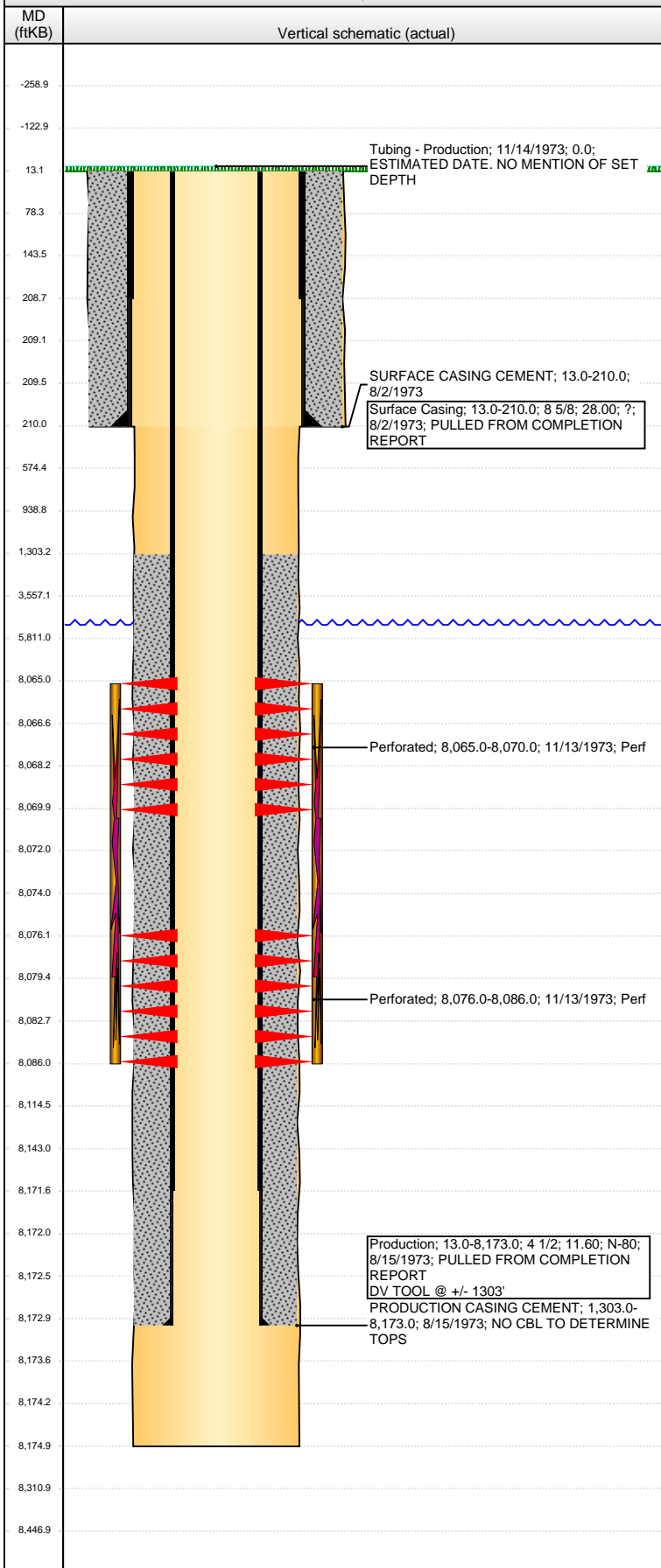


Well Name: SHAW A1

VERTICAL - ORIGINAL HOLE, 4/2/2013 11:56:43 AM



Well Header

API	Business Unit	District	Well Config
05-001-06720	WATTENBERG	15	VERTICAL
Original KB Elevation (ft)	KB - GL / MSL (ftKB)	Spud Date	P & A Date
5,088.00	13.00	8/2/1973	

Comment
NO INFO IN WELL FILE. EVERYTHING PULLED FROM STATE REPORTS. NO LOGS IN LOG POCKET. PRODUCTION CMT INFO INCOMPLETE DUE TO LACK OF CBL AND/OR REPORT INFO. POSSIBLE DV TOOL @ +/- 1303'

Directions To Well

Congressional Location

Quarter 1	Quarter 2	Quarter 3	Quarter 4	Section	Township	Twnshp N...	Range	Rng E/W Dir
		SW	SW	11	1	S	66	W

Bottom Hole Location

North-South Distance (ft)	From N or S Line	East-West Distance (ft)	From E or W Line

Plug Back Total Depths

Date	Depth (ftKB)	Method	Com

Wellbore Sections

Section Des	Size (in)	Act Top (ftKB)	Act Btm (ftKB)
SURFACE	12 1/4	13.0	210.0
PRODUCTION	7 7/8	210.0	8,175.0

Zone Statuses

Zone Name	Status Date	Status	Job
J SAND	11/14/1973	PR	DRILLING/COMPLETION - ORIGINAL, 8/2/1973 00:00

Casing Strings

Casing Description	Run Date	OD (in)	Wt/Len (l...)	Grade	Top (ftKB)	MD (ftKB)
Surface Casing	8/2/1973	8 5/8	28.00	?	13.0	210.0

Production, 8,173.0ftKB

Casing Description	Run Date	OD (in)	Wt/Len (l...)	Grade	Top (ftKB)	MD (ftKB)
Production	8/15/1973	4 1/2	11.60	N-80	13.0	8,173.0

Cement

Description	Top Depth (ftKB)	Bottom Depth (ftKB)
SURFACE CASING CEMENT	13.0	210.0
PRODUCTION CASING CEMENT	1,303.0	8,173.0
PRODUCTION CASING CEMENT		

Tubing Components

Item Des	OD (in)	Wt (lb/ft)	Grade	Jts	Len (ft)	Btm (ftKB)	Btm (TVD) (ftKB)

Perforation Data

Zone	Bnch/St g	Entered Shot Total	Top (ftKB)	Btm (ftKB)	Date
J SAND, ORIGINAL HOLE		10	8,065.00	8,070.00	11/13/1973
J SAND, ORIGINAL HOLE		10	8,076.00	8,086.00	11/13/1973

Stimulations & Treatments

Date	Zone	Primary Job Type
11/14/1973	J SAND, ORIGINAL HOLE	DRILLING/COMPLETION - ORIGINAL
Technical Result	Tech Result Details	Tech Result Note

Comment
DATE ESTIMATED

Other In Hole

Run Date	Des	OD (in)	Top (ftKB)	Btm (ftKB)

Logs

Date	Type	Top (ftKB)	Btm (ftKB)
12/27/2012	GYRO	13.0	6,227.0