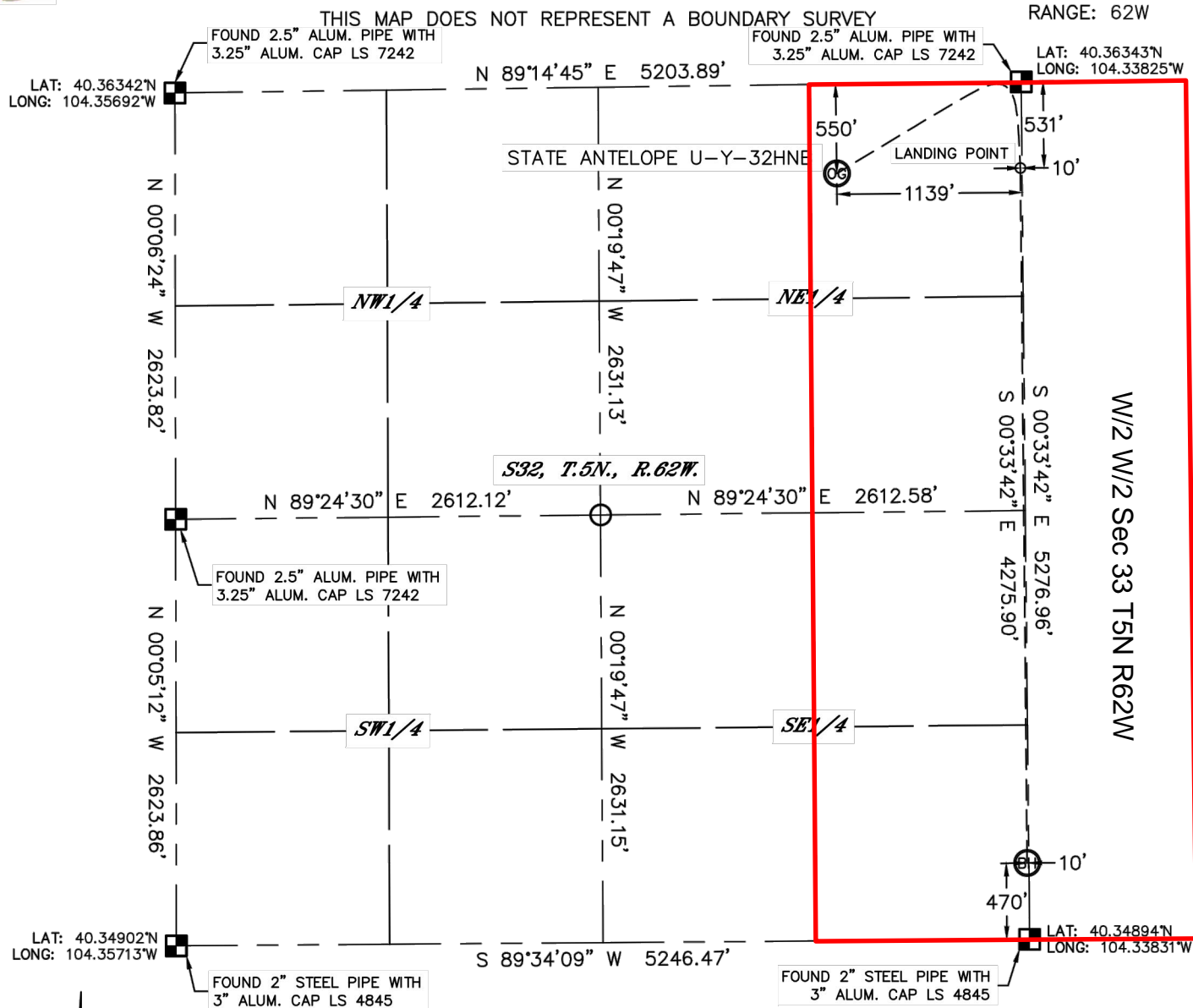


Lat40°, Inc. 1635 Foxtrail Drive, Suite 325 Loveland, CO 970-776-3321

WELL LOCATION CERTIFICATE

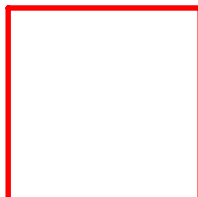
SECTION: 32
TOWNSHIP: 5N
RANGE: 62W



In accordance with a request from Michael Meagher with BONANZA CREEK ENERGY, INC., Lat40', Inc. has determined the surface location of the STATE ANTELOPE U-Y-32HNB to be 550' from the NORTH line and 1139' from the EAST line and the bottom hole to be 470' from the SOUTH line and 10' from the EAST line as measured at right angles from the section lines of Section 32, Township 5 North,



BONANZA CREEK



Wellbore Spacing Unit Outline



Wellbore Spacing Unit Map

01 April 2013 ksc

State Antelope U-Y-32HNB
E/2 E/2 Sec 32 T5N R62W 6th PM
W/2 W/2 Sec 33 T5N R62W 6th PM
Weld County, Colorado