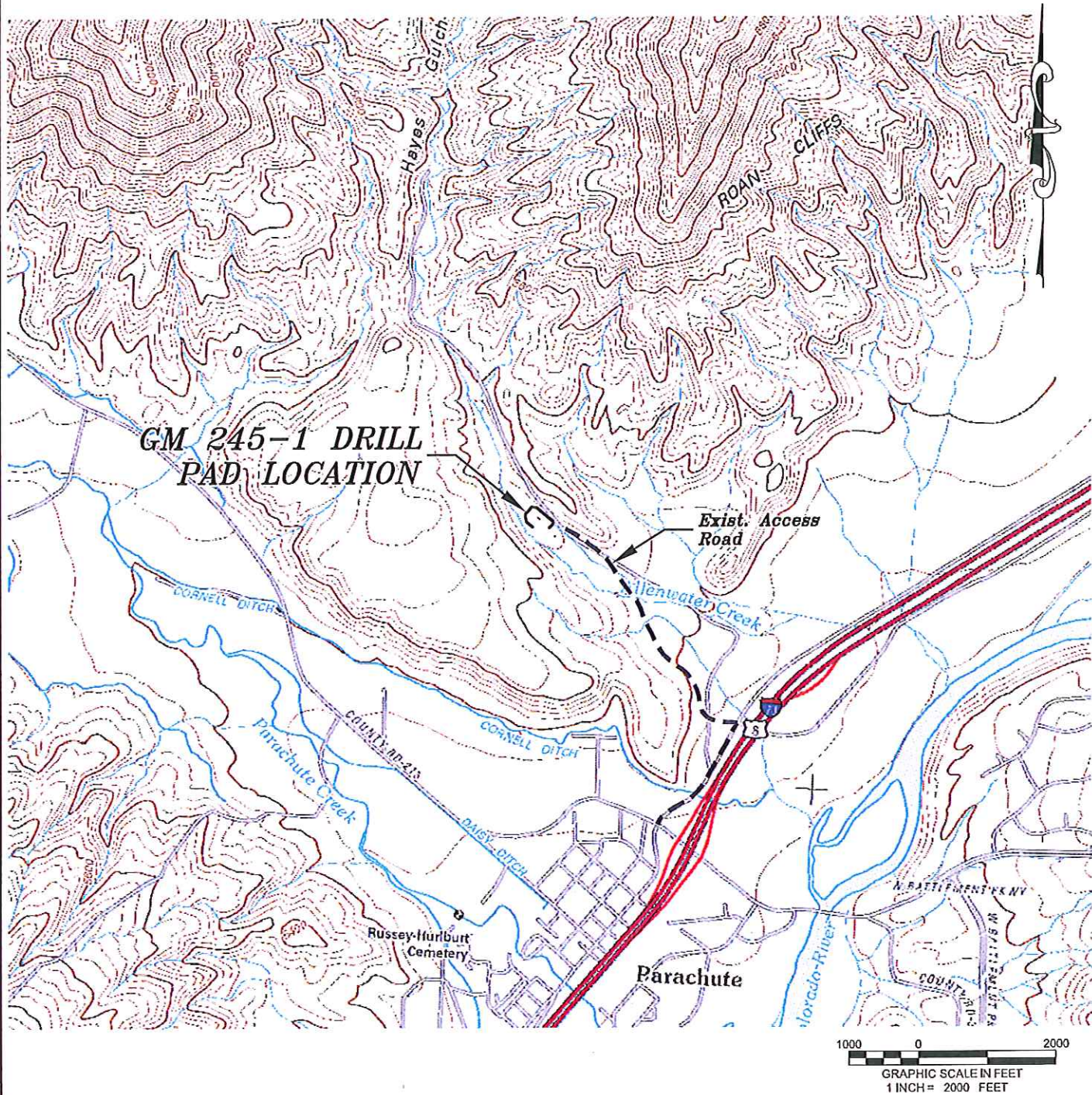


Section 1  
T. 7 S., R 96 W.



**ACCESS DESCRIPTION:**

FROM THE INTERSECTION OF COUNTY ROAD 215 AND STATE HIGHWAY 6 AT PARACHUTE, PROCEED IN A NORTHEASTERLY DIRECTION ALONG STATE HIGHWAY 6  $\pm 0.4$  MILES TO AN INTERSECTION WITH A DIRT/GRAVEL ROAD, PROCEED LEFT IN A NORTHERLY DIRECTION  $\pm 0.7$  MILES TO THE GM 245-1 DRILL PAD LOCATION, AS SHOWN HEREON.

136 East Third Street  
Rifle, Colorado 81650  
Ph. (970) 625-2720  
Fax (970) 625-2773



**BOOKCLIFF**  
*Survey Services, Inc.*

SCALE: 1" = 2000'  
DATE: 3/19/13  
PLAT: 5 of 7  
PROJECT: Valley  
DFT: cws

Construction Plan Prepared for:  
**WPX ENERGY** WPX Energy Rocky Mountain, LLC

GM 245-1 Drill Pad - Plat 5  
ACCESS ROAD & TOPO MAP