

HALLIBURTON

WPX ENERGY ROCKY MOUNTAIN LLC-EBUS

**RGU 33-36-198
SULPHUR CREEK
Garfield County , Colorado**

Cement Multiple Stages

06-Oct-2012

Post Job Summary

The Road to Excellence Starts with Safety

Sold To #: 300721		Ship To #: 2952288		Quote #:		Sales Order #: 9826956	
Customer: WPX ENERGY ROCKY MOUNTAIN LLC-EBUS				Customer Rep: Ragsdale, Ted			
Well Name: RGU			Well #: 33-36-198			API/UWI #: 05-103-11930	
Field: SULPHUR CREEK		City (SAP): MEEKER		County/Parish: Garfield		State: Colorado	
Lat: N 39.916 deg. OR N 39 deg. 54 min. 58.201 secs.				Long: W 108.34 deg. OR W -109 deg. 39 min. 36.63 secs.			
Contractor: CYCLONE 29			Rig/Platform Name/Num: CYCLONE 29				
Job Purpose: Cement Multiple Stages							
Well Type: Development Well			Job Type: Cement Multiple Stages				
Sales Person: MAYO, MARK			Srvc Supervisor: ARNOLD, EDWARD			MBU ID Emp #: 439784	

Job Personnel

HES Emp Name	Exp Hrs	Emp #	HES Emp Name	Exp Hrs	Emp #	HES Emp Name	Exp Hrs	Emp #
ARNOLD, EDWARD John	14	439784	BLUST, CHARLES Thomas	7	386662	CUNNINGHAM, TANNER Wade	1	445660
HONE, AARON D	13	381285	MATTINGLY, ROBERT W	1	412126	PORTER, DANE Andrew	3	446144
SINCLAIR, DAN J	14	338784	VANALSTYNE, TROY L	14	420256			

Equipment

HES Unit #	Distance-1 way	HES Unit #	Distance-1 way	HES Unit #	Distance-1 way	HES Unit #	Distance-1 way
10616651C	30 mile	10867094	30 mile	10867304	30 mile	10867322	30 mile
10897925	30 mile	10938677	30 mile	10938678	30 mile	10998054	30 mile
10998512	30 mile	11021972	30 mile	11027039	30 mile	11259882	30 mile
11583916	30 mile	11808827	30 mile	11808843	30 mile	11808845	30 mile

Job Hours

Date	On Location Hours	Operating Hours	Date	On Location Hours	Operating Hours	Date	On Location Hours	Operating Hours
10-6-2012	14	8						

TOTAL Total is the sum of each column separately

Job				Job Times			
Formation Name				Called Out	Date	Time	Time Zone
Formation Depth (MD)	Top		Bottom	On Location	06 - Oct - 2012	01:00	MST
Form Type		BHST		Job Started	06 - Oct - 2012	06:00	MST
Job depth MD	3679.7 ft	Job Depth TVD	3679.7 ft	Job Completed	06 - Oct - 2012	12:05	MST
Water Depth		Wk Ht Above Floor	3. ft	Job Completed	06 - Oct - 2012	20:18	MST
Perforation Depth (MD)	From		To	Departed Loc	06 - Oct - 2012	22:00	MST

Well Data

Description	New / Used	Max pressure psig	Size in	ID in	Weight lbm/ft	Thread	Grade	Top MD ft	Bottom MD ft	Top TVD ft	Bottom TVD ft
-------------	------------	-------------------	---------	-------	---------------	--------	-------	-----------	--------------	------------	---------------

Tools and Accessories

Type	Size	Qty	Make	Depth	Type	Size	Qty	Make	Depth	Type	Size	Qty	Make
Guide Shoe					Packer					Top Plug			
Float Shoe					Bridge Plug					Bottom Plug			
Float Collar					Retainer					SSR plug set			
Insert Float										Plug Container	9.625	1	HES
Stage Tool										Centralizers			

Miscellaneous Materials

Gelling Agt		Conc		Surfactant		Conc		Acid Type		Qty		Conc	%
Treatment Fld		Conc		Inhibitor		Conc		Sand Type		Size		Qty	

Fluid Data

Stage/Plug #: 1													
Fluid #	Stage Type	Fluid Name			Qty	Qty uom	Mixing Density lbm/gal	Yield ft3/sk	Mix Fluid Gal/sk	Rate bbl/min	Total Mix Fluid Gal/sk		

Stage/Plug #: 1									
Fluid #	Stage Type	Fluid Name	Qty	Qty uom	Mixing Density lbm/gal	Yield ft ³ /sk	Mix Fluid Gal/sk	Rate bbl/min	Total Mix Fluid Gal/sk
1	Fresh Water Spacer		40.00	bbl	8.33	.0	.0	4	
2	1st Stage Lead Cement	ECONOCEM (TM) SYSTEM (452992)	615.0	sacks	12.8	1.77	9.34	6	9.34
	0.25 lbm	POLY-E-FLAKE (101216940)							
	0.3 %	HR-5, 50 LB SK (100005050)							
	9.34 Gal	FRESH WATER							
3	1st Stage Tail Cement	VERSACEM (TM) SYSTEM (452010)	185.0	sacks	12.8	1.96	10.95	6	10.95
	10.95 Gal	FRESH WATER							
4	Displacement		282.00	bbl	8.33	.0	.0	8	
5	Fresh Water Spacer		30.00	bbl	8.33	.0	.0	4	
6	2nd Stage TAIL	VERSACEM (TM) SYSTEM (452010)	935.0	sacks	12.8	1.96	10.95	6	10.95
	10.95 Gal	FRESH WATER							
7	Displacement		124.00	bbl	8.33	.0	.0	4	
8	Top Out Cement	HALCEM (TM) SYSTEM (452986)	83.0	sacks	15.8	1.15	5.0	.5	5.0
	5 Gal	FRESH WATER							
Calculated Values		Pressures		Volumes					
Displacement	406.1	Shut In: Instant		Lost Returns	0	Cement Slurry	606.6	Pad	
Top Of Cement	SURFACE	5 Min		Cement Returns	193	Actual Displacement	406.1	Treatment	
Frac Gradient		15 Min		Spacers	60	Load and Breakdown		Total Job	1066.7
Rates									
Circulating	RIG	Mixing	6	Displacement	6	Avg. Job	6		
Cement Left In Pipe	Amount	27.5 FT	Reason	Shoe Joint					
Frac Ring # 1 @	ID	Frac ring # 2 @	ID	Frac Ring # 3 @	ID	Frac Ring # 4 @	ID		
The Information Stated Herein Is Correct				Customer Representative Signature					

The Road to Excellence Starts with Safety

Sold To #: 300721	Ship To #: 2952288	Quote #:	Sales Order #: 9826956
Customer: WPX ENERGY ROCKY MOUNTAIN LLC-EBUS	Customer Rep: Ragsdale, Ted		
Well Name: RGU	Well #: 33-36-198	API/UWI #: 05-103-11930	
Field: SULPHUR CREEK	City (SAP): MEEKER	County/Parish: Garfield	State: Colorado
Legal Description:			
Lat: N 39.916 deg. OR N 39 deg. 54 min. 58.201 secs.		Long: W 108.34 deg. OR W -109 deg. 39 min. 36.63 secs.	
Contractor: CYCLONE 29	Rig/Platform Name/Num: CYCLONE 29		
Job Purpose: Cement Multiple Stages	Ticket Amount:		
Well Type: Development Well	Job Type: Cement Multiple Stages		
Sales Person: MAYO, MARK	Srv Supervisor: ARNOLD, EDWARD	MBU ID Emp #: 439784	

Activity Description	Date/Time	Cht #	Rate bbl/min	Volume bbl		Pressure psig		Comments
				Stage	Total	Tubing	Casing	
Call Out	10/06/2012 01:00							
Pre-Convoy Safety Meeting	10/06/2012 03:20							Including entire cement crew.
Crew Leave Yard	10/06/2012 03:30							
Arrive At Loc	10/06/2012 06:20							Rig still Running casing.
Assessment Of Location Safety Meeting	10/06/2012 06:30							Water; PH 7.5; KCL 450; So4 <200; Fe 0; Calcium 250; Chlorides 0; Temp 45; TDS 290.
Pre-Rig Up Safety Meeting	10/06/2012 09:50							Including entire cement crew.
Rig-Up Equipment	10/06/2012 10:00							1 Elite # 4; 1 660 bulk truck; 1 hard line to floor; 1 line to upright; 1 line to rig tank. 9.625" compact head.
Rig-Up Completed	10/06/2012 12:25							
Pre-Job Safety Meeting	10/06/2012 12:30							Including everyone on location. MSC and Plug Set provided by Weatherford.
Start Job	10/06/2012 12:50							TD 3684; TP 3679.7; SJ 27.5; OH 14 3/4 TO 1540 13 1/2 TO TD; Casing 9.625" 36# J-55 ; DV Tool set at 1602; Mud 8.9 ppg.
Pump Water	10/06/2012 12:53		2	2			68.0	Fill lines with fresh water.
Test Lines	10/06/2012 12:54					3779.0		Good pressure test, no leaks.

Sold To #: 300721

Ship To #: 2952288

Quote #:

Sales Order #:

9826956

SUMMIT Version: 7.3.0040

Wednesday, October 10, 2012 01:35:00

Cementing Job Log

Activity Description	Date/Time	Cht #	Rate bbl/min	Volume bbl		Pressure psig		Comments
				Stage	Total	Tubing	Casing	
Pump Spacer 1	10/06/2012 13:00		4	40			195.0	20 BBL fresh water spacer.
Pump Lead Cement	10/06/2012 13:16		6	193.8			390.0	615 sks 1st Stage Lead Cement, 12.8 ppg, 1.77 cf3, 9.34 gal/sk.
Pump Tail Cement	10/06/2012 13:50		6	64.5			236.0	185 sks 1st Stage Tail Cement, 12.8 ppg, 1.96 cf3, 10.95 gal/sk.
Shutdown	10/06/2012 14:07							Wash up on top of plug per customer.
Drop Plug	10/06/2012 14:10							Put wiper plug in pipe.
Pump Displacement	10/06/2012 14:12		8	282.3			980.0	Fresh water displacement. Slowed rate to 4 bpm @113 and resumed rate to 8 bpm @ 133 as dart passed through MSC.
Slow Rate	10/06/2012 14:51		4	272.3			745.0	Slow rate 10 BBL's prior to bumping the plug.
Bump Plug	10/06/2012 14:52		4	282.3			760.0	Bumped plug, took 500 PSI over.
Check Floats	10/06/2012 14:56							Floats held, 1.5 BBL back
Drop Opening Device For Multiple Stage Cementer	10/06/2012 15:00							Allowed 10 minutes for opening device to reach tool.
Other	10/06/2012 15:01							Full returns throughout first stage, go right into second stage per customer request.
Open Multiple Stage Cementer	10/06/2012 15:10							Open tool and start 2nd stage spacer. Full returns throughout first stage, go right into second stage per customer request.
Pump Spacer 1	10/06/2012 15:12		4	20			237.0	Pumped 3/4 bbl and MCS opened @ 525 psi. Got returns with 7 bbls away.
Pump Tail Cement	10/06/2012 15:22		6	326.3			400.0	935 sks 2nd Stage Tail Cement, 12.8 ppg, 1.96 cf3, 10.95 gal/sk.
Shutdown	10/06/2012 16:18							Circulated 60 bbls of 1st Stage Cement To Surface.
Drop Plug	10/06/2012 16:20							Plug left container.

Sold To # : 300721

Ship To # :2952288

Quote # :

Sales Order # : 9826956

SUMMIT Version: 7.3.0040

Wednesday, October 10, 2012 01:35:00

Cementing Job Log

Activity Description	Date/Time	Cht #	Rate bbl/ min	Volume bbl		Pressure psig		Comments
				Stage	Total	Tubing	Casing	
Pump Displacement	10/06/2012 16:22		8	126			450.0	Fresh water displacement.
Slow Rate	10/06/2012 16:29		6	40			227.0	Slow rate
Slow Rate	10/06/2012 16:34		2	60			235.0	
Slow Rate	10/06/2012 16:43		0.5	80			278.0	
Resume	10/06/2012 17:03		2	90			341.0	
Resume	10/06/2012 17:13		4	110			450.0	
Close Multiple Stage Cementer	10/06/2012 17:17		4	123.8			477.0	Bumped plug, took 900 PSI over.
Check Floats	10/06/2012 17:20							MSC closed, 1 BBL back
End Job	10/06/2012 17:21							Circulated 133 bbls. Of 2nd Stage Cement To Surface. End job on second stage.
Start Job	10/06/2012 19:25							Start topping out well.
Pump Cement	10/06/2012 19:27		1	16.9			.0	83 sks Top Out Cement, 15.8 ppg, 1.15 cf3, 5 gal/sk. Used 83 sks of top out cement, returning 267 sks of cement. 12.5 tons added to ticket for return charge.
Shutdown	10/06/2012 20:13							
End Job	10/06/2012 20:18							
Pre-Rig Down Safety Meeting	10/06/2012 20:30							Including entire cement crew.
Rig-Down Equipment	10/06/2012 20:45							
Rig-Down Completed	10/06/2012 21:45							
Pre-Convoy Safety Meeting	10/06/2012 21:50							Including entire cement crew.
Crew Leave Location	10/06/2012 22:00							Crew leave location for Service Center or another location. Used 40 lbs. of sugar. 6 Add Hours. No derrick charge.

Sold To # : 300721

Ship To # :2952288

Quote # :

Sales Order # : 9826956

SUMMIT Version: 7.3.0040

Wednesday, October 10, 2012 01:35:00

HALLIBURTON

Cementing Job Log

Activity Description	Date/Time	Cht #	Rate bbl/ min	Volume bbl		Pressure psig		Comments
				Stage	Total	Tubing	Casing	
Other	10/06/2012 22:00							Thank You for using Halliburton. Ed Arnold and Crew.

Sold To # : 300721

Ship To # :2952288

Quote # :

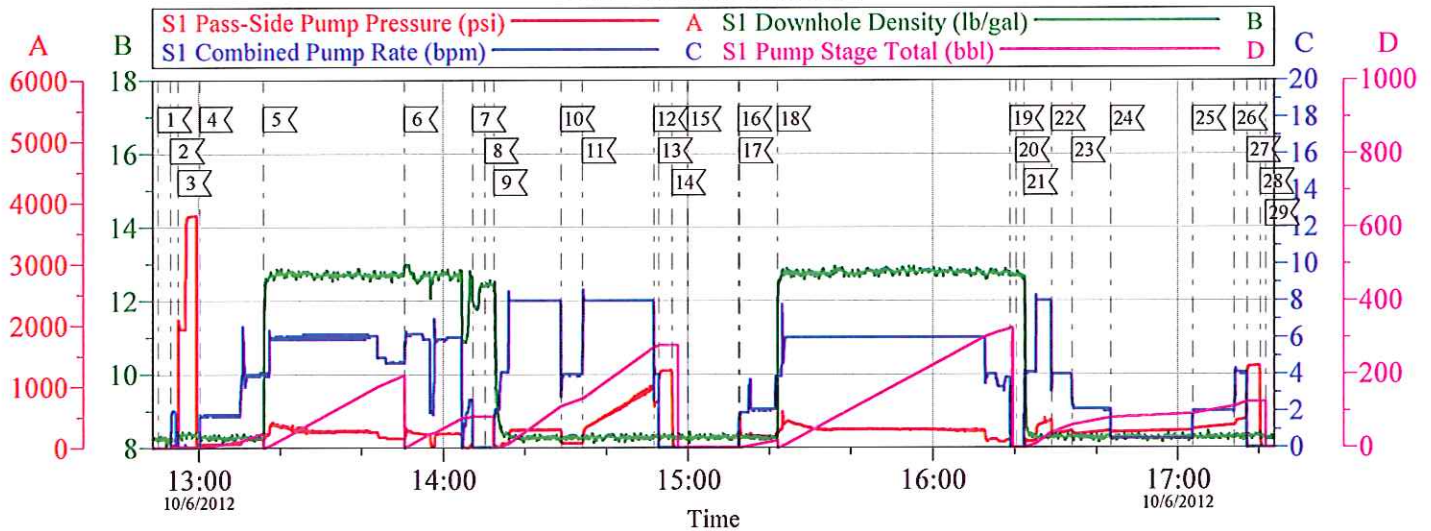
Sales Order # :

9826956

SUMMIT Version: 7.3.0040

Wednesday, October 10, 2012 01:35:00

WPX RGU 33-36-198 9 5/8" 2 STAGE SURFACE



Local Event Log			
1 START JOB	12:50:03	2 FILL LINES	12:53:10
3 TEST LINES	12:54:57	4 PUMP SPACER	13:00:16
5 PUMP 1ST STAGE LEAD	13:16:01	6 PUMP 1ST STAGE TAIL	13:50:37
7 SHUT DOWN	14:07:17	8 DROP WIPER DART	14:10:18
9 PUMP DISPLACEMENT	14:12:29	10 SLOW RATE	14:28:54
11 RESUME RATE	14:34:08	12 SLOW RATE	14:51:38
13 LAND PLUG	14:52:51	14 CHECK FLOATS	14:56:05
15 DROP OPENING TOOL	15:00:00	16 PUMP SPACER	15:12:26
17 MSC OPENED	15:12:46	18 PUMP 2ND STAGE CEMENT	15:22:01
19 SHUT DOWN	16:18:58	20 DROP CLOSING PLUG	16:20:24
21 PUMP DISPLACEMENT	16:22:19	22 SLOWED RATE 6 BPM	16:29:05
23 SLOWED RATE 4 BPM	16:34:00	24 SLOWED RATE .5 BPM	16:43:34
25 INCREASE RATE 2 BPM	17:03:42	26 INCREASE RATE 4 BPM	17:13:52
27 LAND PLUG/ CLOSE MSC	17:17:01	28 CHECK	17:20:20
29 END JOB	17:21:41		

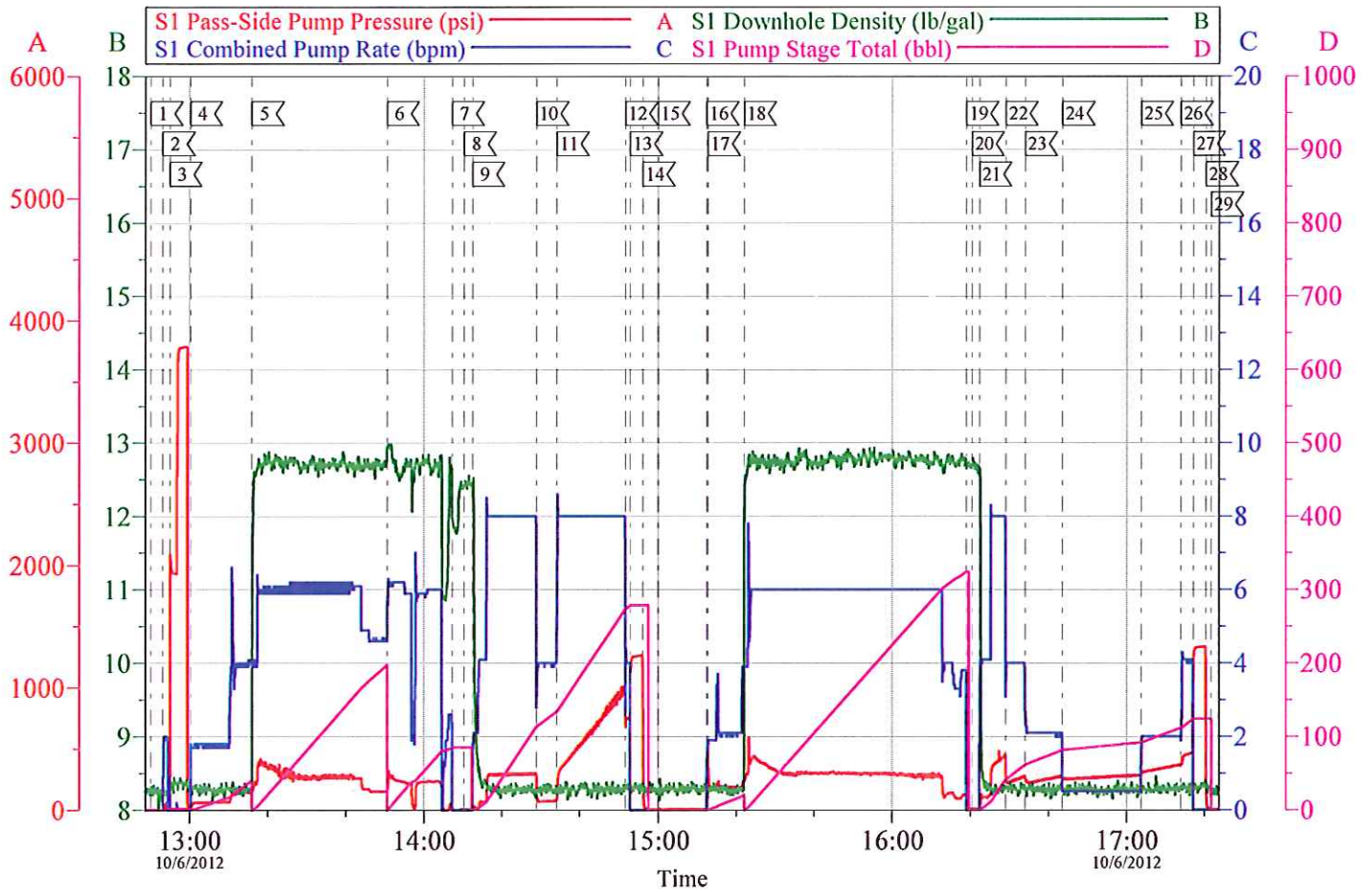
Customer: WPX
Well Description: RGU 33-36-198
Company Rep: TED RAGSDALE

Job Date: 06-Oct-2012
Job Type: 2 STAGE SURFACE
Cement Supervisor: ED ARNOLD

Sales Order #: 9826956
ADC Used: YES
Elite #4: TROY VANALSTYNE

OptiCem v6.4.10
06-Oct-12 18:03

WPX RGU 33-36-198 9 5/8" 2 STAGE SURFACE

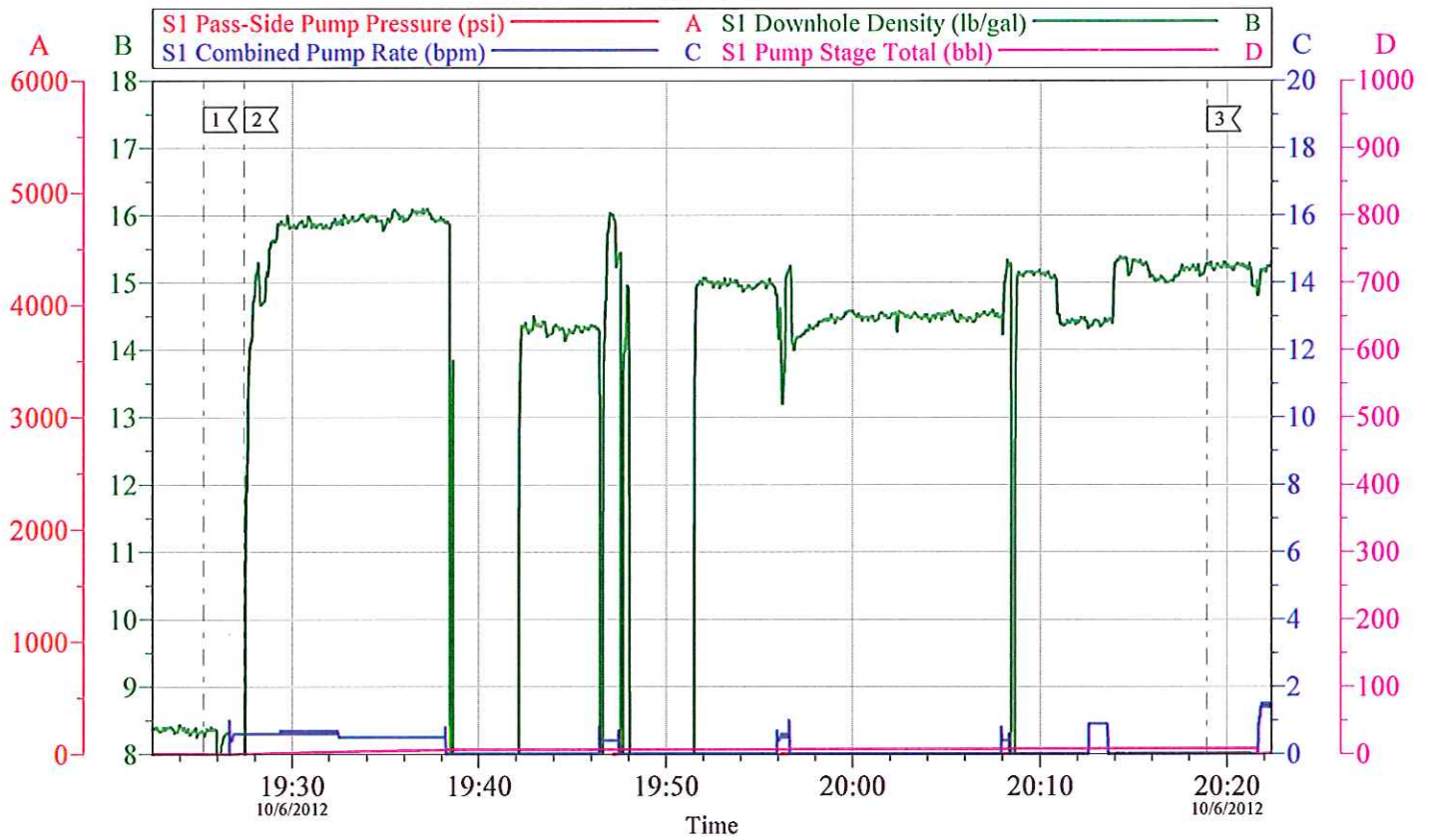


Customer: WPX	Job Date: 06-Oct-2012	Sales Order #: 9826956
Well Description: RGU 33-36-198	Job Type: 2 STAGE SURFACE	ADC Used: YES
Company Rep: TED RAGSDALE	Cement Supervisor: ED ARNOLD	Elite #4: TROY VANALSTYNE

OptiCem v6.4.10
06-Oct-12 18:03

WPX - RGU 33-36-198

TOP OUT



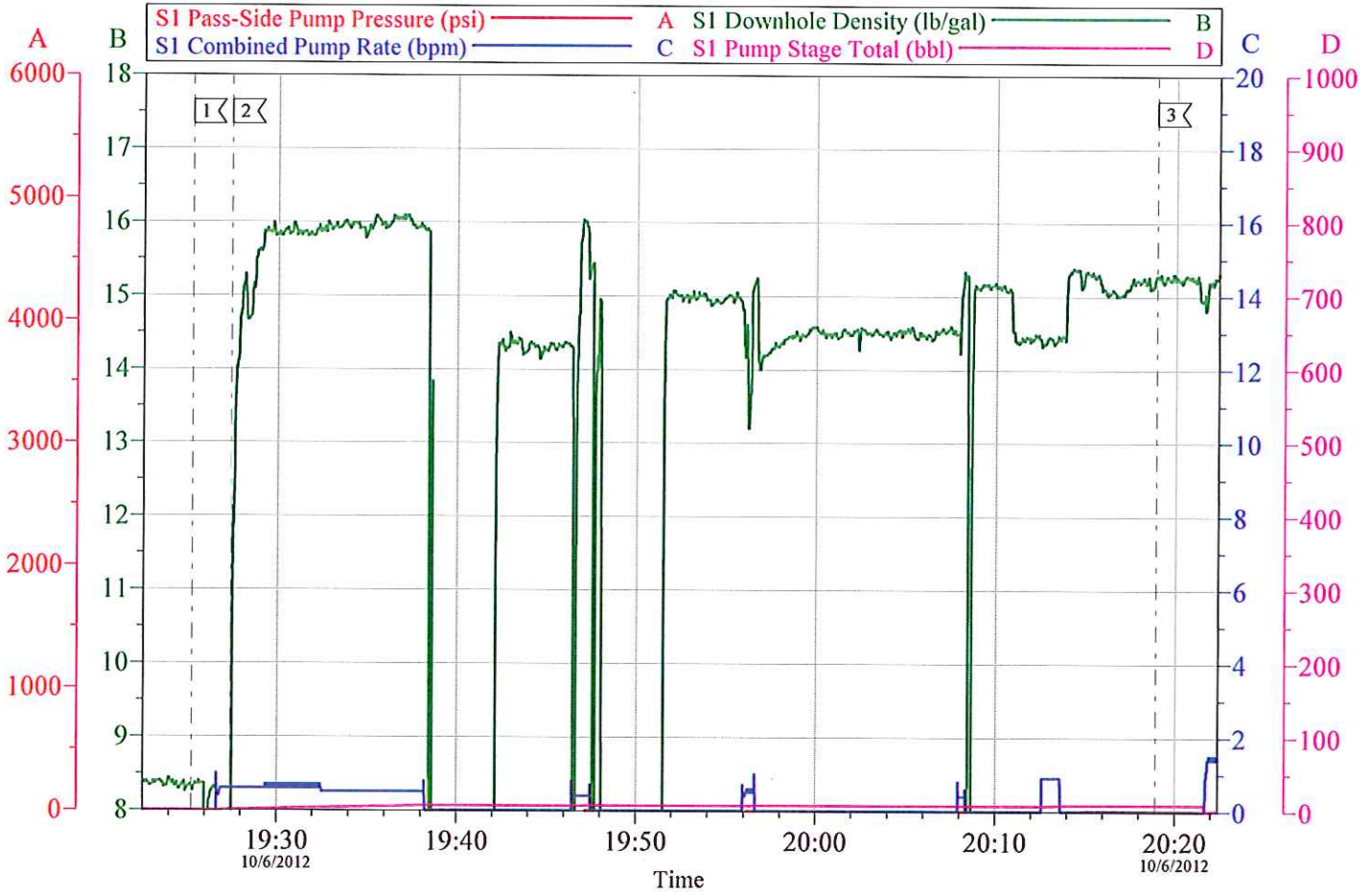
Local Event Log			
[1] START JOB	19:25:15	[2] TOP OFF WELL	19:27:26
		[3] END JOB	20:18:55

Customer: WPX	Job Date: 06-Oct-2012	Sales Order #: 9826956
Well Description: RGU 33-36-198	Job Type: TOP OUT	ADC Used: YES
Company Rep: TED RAGSDALE	Cement Supervisor: ED ARNOLD	Elite #4: TROY VANALSTYNE

OptiCem v6.4.10
06-Oct-12 20:28

WPX - RGU 33-36-198

TOP OUT



Customer: WPX	Job Date: 06-Oct-2012	Sales Order #: 9826956
Well Description: RGU 33-36-198	Job Type: TOP OUT	ADC Used: YES
Company Rep: TED RAGSDALE	Cement Supervisor: ED ARNOLD	Elite #4: TROY VANALSTYNE

OptiCem v6.4.10
06-Oct-12 20:28