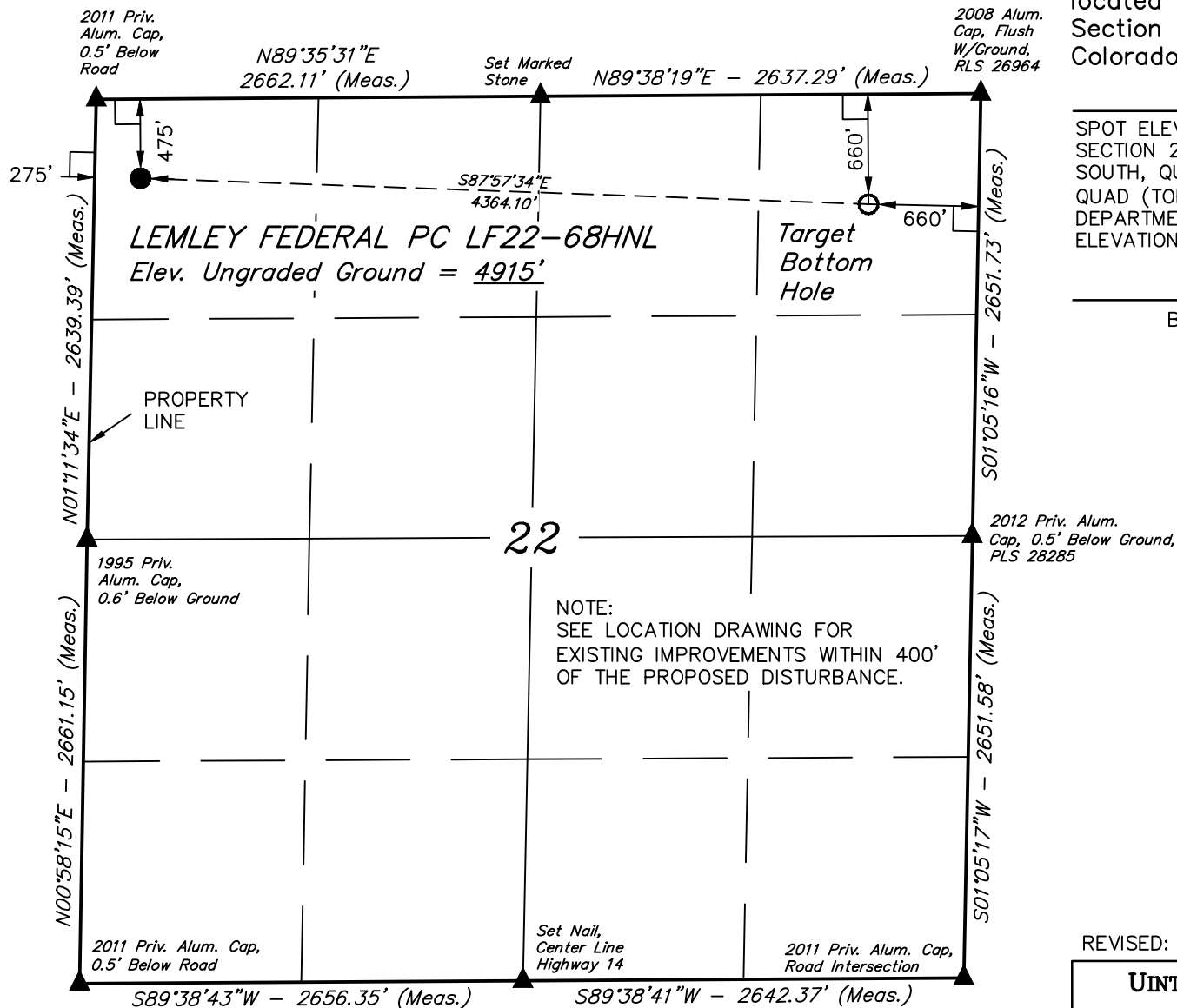


WELL LOCATION PLAT T8N, R60W, 6th P.M.



NOBLE ENERGY, INC.

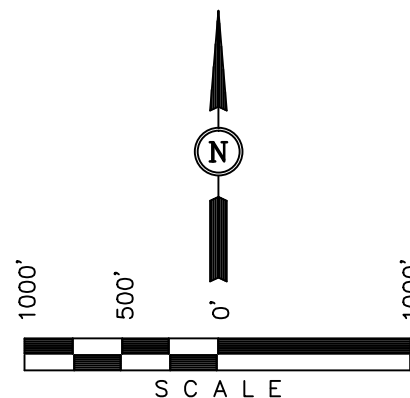
Well location, LEMLEY FEDERAL PC LF22-68HNL, located as shown in the NW 1/4 NW 1/4 of Section 22, T8N, R60W, 6th P.M., Weld County, Colorado.

BASIS OF ELEVATION

SPOT ELEVATION LOCATED AT THE NORTHEAST CORNER OF SECTION 2, T9N, R61W, 6th P.M., TAKEN FROM THE GROVER SOUTH, QUADRANGLE, COLORADO, WELD COUNTY, 7.5 MINUTE QUAD (TOPOGRAPHICAL MAP) PUBLISHED BY THE UNITED STATES DEPARTMENT OF THE INTERIOR, GEOLOGICAL SURVEY. SAID ELEVATION IS MARKED AS BEING 5043 FEET.

BASIS OF BEARINGS

BASIS OF BEARINGS IS A G.P.S. OBSERVATION.



CERTIFICATE

THIS IS TO CERTIFY THAT THE ABOVE PLAT WAS PREPARED FROM FIELD NOTES OF ACTUAL SURVEYS MADE BY ME OR UNDER MY SUPERVISION AND THAT THE SAME ARE TRUE AND CORRECT TO THE BEST OF MY KNOWLEDGE AND BELIEF.

REGISTERED LAND SURVEYOR
REGISTRATION NO. 17492
STATE OF COLORADO

REVISED: 02-05-13 B.D.H.

UINTAH ENGINEERING & LAND SURVEYING
85 SOUTH 200 EAST - VERNAL, UTAH 84078
(435) 789-1017

LEGEND:

└─┘ = 90° SYMBOL

● = PROPOSED WELL HEAD.

▲ = SECTION CORNERS LOCATED.

FEATURE TABLE

EXISTING FEATURE	DIRECTION	LENGTH
PROPERTY LINE	WEST	275'

PDOP = 2.0

NAD 83 (TARGET BOTTOM HOLE)	NAD 83 (SURFACE LOCATION)
LATITUDE = 40°39'12.10" (40.653361)	LATITUDE = 40°39'13.67" (40.653797)
LONGITUDE = 104°04'12.63" (104.070175)	LONGITUDE = 104°05'09.20" (104.085889)

SCALE 1" = 1000'	DATE SURVEYED: 06-25-12	DATE DRAWN: 08-09-12
PARTY DARREN SHANKS C.T. J.M.H.	REFERENCES G.L.O. PLAT	
WEATHER WARM	FILE NOBLE ENERGY, INC.	

SITE SKETCH T8N, R60W, 6th P.M.

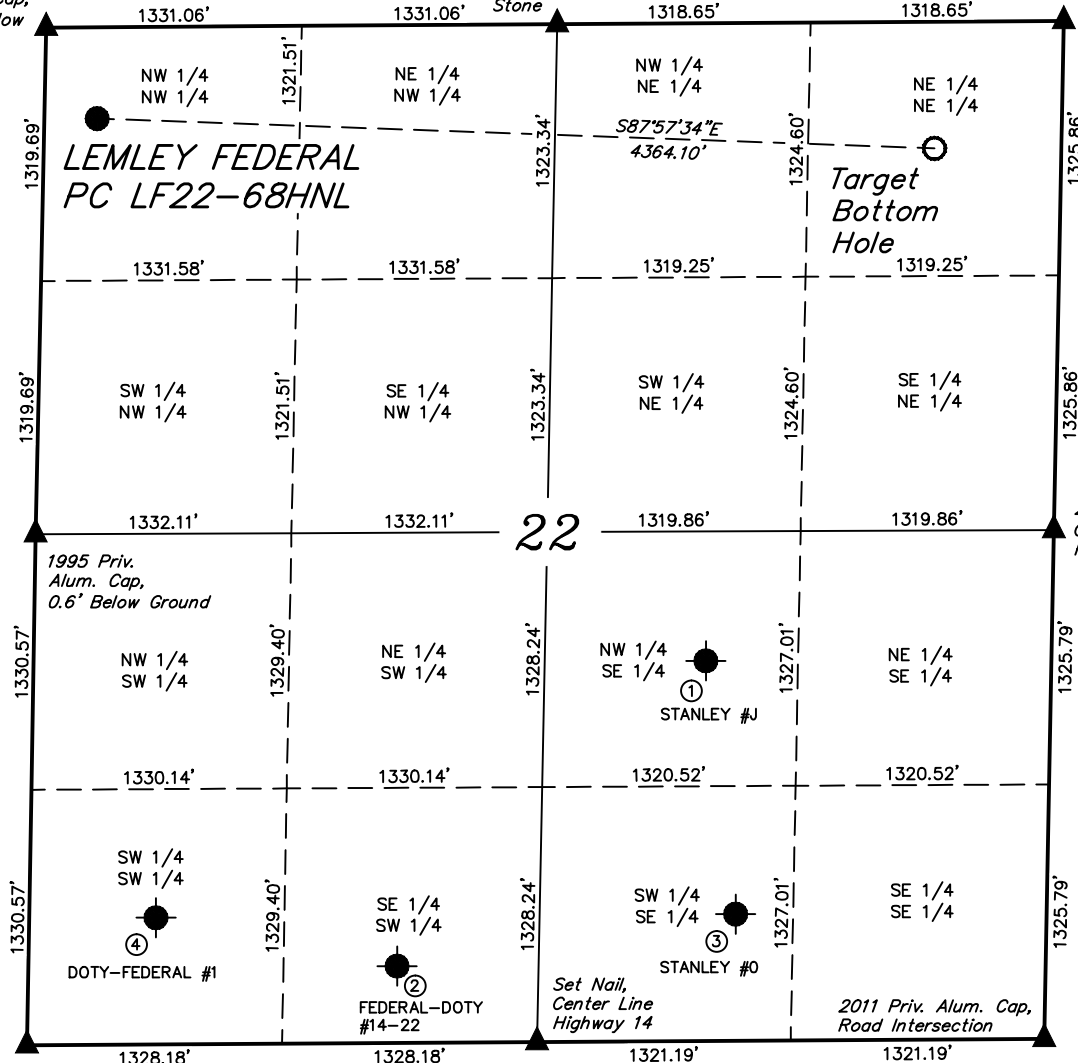
NOBLE ENERGY, INC.

Well location, LEMLEY FEDERAL PC LF22-68HNL, located as shown in the NW 1/4 NW 1/4 of Section 22, T8N, R60W, 6th P.M., Weld County, Colorado.

2011 Priv. Alum. Cap, 0.5' Below Road

Set Marked Stone

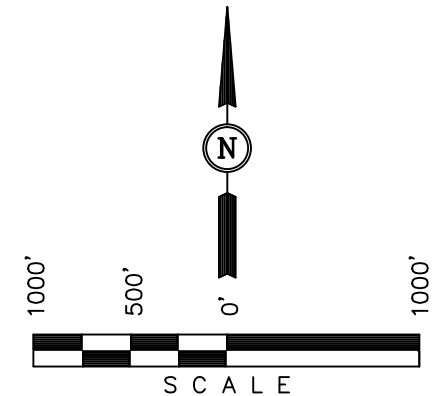
2008 Alum. Cap, Flush W/Ground, RLS 26964



2011 Priv. Alum. Cap, 0.5' Below Road

Set Nail, Center Line Highway 14

2011 Priv. Alum. Cap, Road Intersection



LEGEND:

- ▲ = SECTION CORNERS LOCATED.
- = PROPOSED WELL HEAD.
- = BOTTOM HOLE
- = ABANDONED WELLS

REVISED: 02-05-13 B.D.H.

UINTAH ENGINEERING & LAND SURVEYING
85 SOUTH 200 EAST - VERNAL, UTAH 84078
(435) 789-1017

	WELL NAME	QTR-QTR	FOOTAGES	LATITUDE	LONGITUDE	ELEVATION	PDOP
1	STANLEY #J	NW 1/4 SE 1/4	FROM COGCC DATABASE	40.645975°	104.074492°	4,881'	NA
2	FEDERAL-DOTY #14-22	SE 1/4 SW 1/4	FROM COGCC DATABASE	40.641605°	104.080222°	4,905'	NA
3	STANLEY #0	SW 1/4 SE 1/4	FROM COGCC DATABASE	40.642355°	104.073912°	4,880'	NA
4	DOTY-FEDERAL #1	SW 1/4 SW 1/4	FROM COGCC DATABASE	40.642295°	104.084742°	4,920'	NA

SCALE 1" = 1000'	DATE SURVEYED: 06-25-12	DATE DRAWN: 08-09-12
PARTY DARREN SHANKS C.T. J.M.H.	REFERENCES G.L.O. PLAT	
WEATHER WARM	FILE NOBLE ENERGY, INC.	